



# 2013-2014



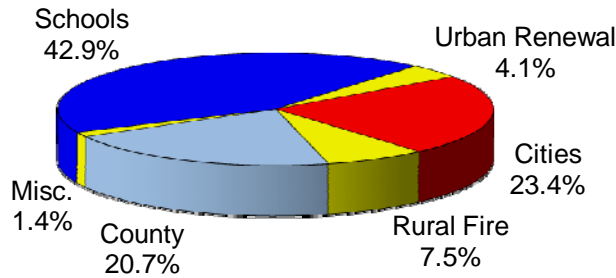
## SUMMARY OF ASSESSMENT AND TAX ROLL - LINN COUNTY, OREGON

### VALUATION for Tax Year beginning July 1, 2013

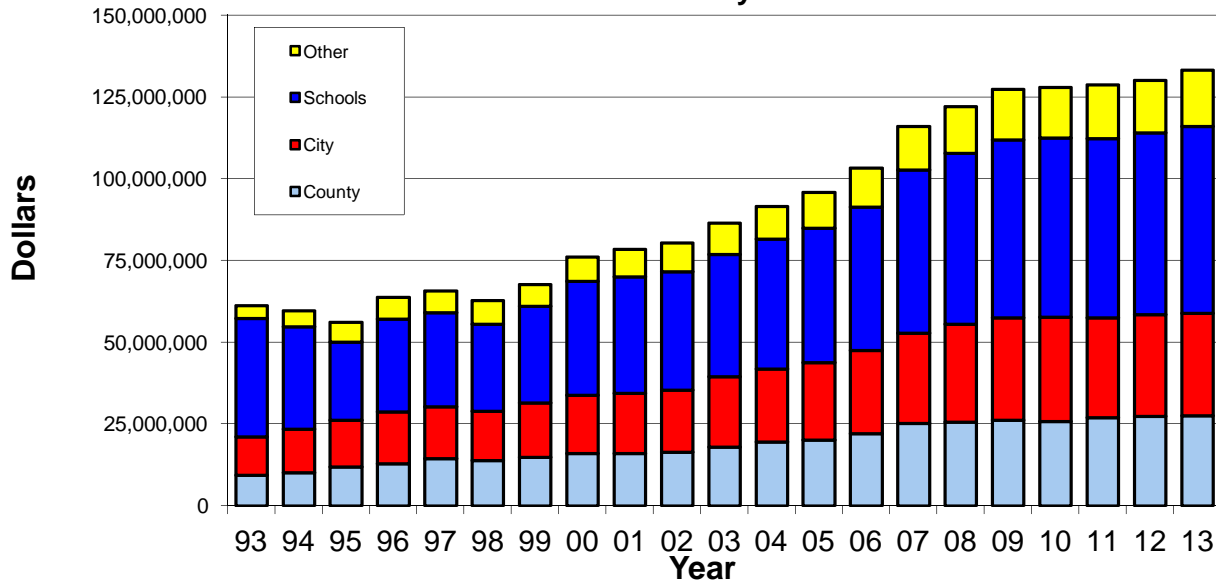
	Real Market Value	Assessed Value	Service Exemption	Taxable Value
Real Property	10,033,449,195	7,639,006,015	27,141,237	7,611,864,778
Manufactured Structures	112,958,100	107,561,940	1,804,769	105,757,171
Personal Property	240,404,210	240,404,210		240,404,210
Public Utilities	428,327,079	396,669,103		396,669,103
<b>Total</b>	<b>10,815,138,584</b>	<b>8,383,641,268</b>	<b>28,946,006</b>	<b>8,354,695,262</b>

Real Market Value (RMV) is an estimate of selling prices.  
 Assessed Value (AV) is the value as calculated under Measure 50.  
 Taxable Value is Assessed Value less Disabled Veteran's and Active Service Exemptions.

### DISTRIBUTION of TAX DOLLARS



### TAX DOLLARS by YEAR



**ASSESSMENT & TAXES by DISTRICT**

	REAL MARKET VALUE	TAXABLE VALUE	LESS URBAN RENEWAL	TOTAL VALUE TO COMPUTE TAX RATES	MAXIMUM TAX RATE	TAXES IMPOSED
<b>COUNTY</b>	10,815,138,584	8,354,695,262	341,219,769	8,013,475,493	4.0436	27,571,984.24
<b>CITIES</b>						
Albany	3,117,569.985	2,826,866.390	135,999,495	2,690,866,895	7.6592	20,530,141.50
Brownsville	101,270.365	86,588,858		86,588,858	10.7206	928,218.52
Gates	3,369.235	3,255,932		3,255,932	0.2824	919.47
Halsey	54,241.335	47,945,628		47,945,628	6.7874	325,426.23
Harrisburg	205,946.328	182,429,765	18,329,125	164,100,640	3.1482	574,315.37
Idanha	3,892.497	3,440,490		3,440,490	2.5029	8,611.22
Lebanon	1,102,083.377	962,821,787	183,414,945	779,406,842	5.6763	5,340,290.13
Lyons	81,745.323	73,089,720		73,089,720	1.8926	138,329.70
Mill City	68,296.219	63,161,498		63,161,498	4.1578	262,612.84
Millersburg	400,382.789	358,044,132		358,044,132	1.7000	608,675.35
Scio	45,359.892	40,633,642		40,633,642	4.9057	199,336.47
Sodaville	15,648.718	14,157,238		14,157,238	0.4552	6,444.36
Sweet Home	440,492.100	383,803,844		383,803,844	8.6357	2,341,909.65
Tangent	151,778.735	0		0	0.0000	0.00
Waterloo	11,388.058	0		0	0.0000	0.00
<b>TOTAL</b>						31,265,230.81
<b>RURAL FIRE PROTECTION DISTRICTS</b>						
Albany	629,937.720	472,212,548		472,212,548	2.1500	1,015,256.27
Brownsville	349,868.032	217,392,309		217,392,309	2.2252	483,728.51
Corvallis	170,454.876	130,228,238		130,228,238	2.1140	275,302.04
Gates	30,250.815	22,233,035		22,233,035	2.3000	51,135.99
Halsey/Shedd	600,769.486	392,366,855		392,366,855	0.9894	388,207.38
Harrisburg	511,146.134	336,904,288	18,342,125	318,562,163	1.1299	359,953.47
Idanha	5,245.417	4,460,642		4,460,642	1.6592	7,401.12
Jefferson	433,621.053	301,285,081		301,285,081	1.1955	360,186.05
Lebanon	2,190,921.237	1,739,004,900	186,865,674	1,552,139,226	2.4753	3,824,165.88
Lyons	220,082.141	176,889,765		176,889,765	1.6469	291,319.54
Mill City	98,616.157	89,342,000		89,342,000	1.8048	160,455.40
Monroe	5.530	1,690		1,690	0.0000	0.00
Mohawk	118.350	84,710		84,710	1.9126	162.02
Scio	542,383.498	326,033,058		326,033,058	1.9664	641,111.48
Stayton	145,710.876	91,297,231		91,297,231	1.5664	143,007.66
Sw Hm Fire/Am	868,252.451	697,640,773		697,640,773	1.8733	1,306,906.43
Sw Hm Am	127,646.925	79,134,830		79,134,830	0.3500	27,697.28
Tangent	381,757.518	262,037,136		262,037,136	2.5739	674,456.09
<b>TOTAL</b>						10,010,452.61
<b>SCHOOL DISTRICTS</b>						
Albany	4,605,473.008	3,900,786,184	135,999,495	3,764,786,689	6.3161	23,506,938.93
Central Linn	927,486.552	600,400,457		600,400,457	4.6179	2,651,694.76
Corvallis	179,456.617	134,324,090		134,324,090	7.6150	890,974.00
Eugene	13,826.508	10,796,350		10,796,350	7.8436	71,528.58
Harrisburg	506,009.887	329,723,922	18,342,125	311,381,797	5.9787	1,834,953.47
Jefferson	58,923.426	29,819,072		29,819,072	4.8468	137,799.83
Lebanon	2,421,722.236	1,851,633,753	186,878,149	1,664,755,604	7.0231	11,407,741.29
Marcola	240.100	70,471		70,471	4.6687	324.29
Monroe	5.530	1,690		1,690	0.0000	0.00
N Santiam	349,378.650	251,719,812		251,719,812	5.4934	1,356,457.82
Santiam Can	209,149.278	166,288,665		166,288,665	4.8880	754,438.52
Scio	440,628.191	261,704,122		261,704,122	5.3760	1,370,521.95
Sweet Home	1,102,838.601	817,426,674		817,426,674	7.0078	5,296,919.93
<b>TOTAL</b>						49,280,293.37

	REAL MARKET VALUE	TAXABLE VALUE	LESS URBAN RENEWAL	TOTAL VALUE TO COMPUTE TAX RATES	MAXIMUM TAX RATE	TAXES IMPOSED
<b>EDUCATIONAL SERVICE DISTRICTS</b>						
Lane	14,066.608	10,866,821		10,866,821	0.2232	2,377.73
Linn Ben Linc	10,392,769.900	8,062,289,557	341,219,769	7,721,069,788	0.3049	2,284,039.33
Willamette	408,302.076	281,538,884		281,538,884	0.2967	81,343.61
TOTAL						2,367,760.67
<b>COMMUNITY COLLEGES and LIBRARIES</b>						
Chemeketa CC	407,624.291	324,000,016		324,000,016	0.8573	267,288.04
Lane CC	520,076.495	340,590,743	18,342,125	322,248,618	0.8646	279,441.21
Linn Benton CC	9,887,437.798	7,690,104,503	322,877,644	7,367,226,859	0.6915	4,991,122.07
Benton Lib	15,757.890	13,124,513		13,124,513	0.3947	5,180.27
Chemeketa Lib	407,624.291	324,000,016		324,000,016	0.0818	26,503.34
TOTAL						5,569,534.93
<b>MISCELLANEOUS DISTRICTS</b>						
4H Extension	10,815,138.584	8,354,695,262	341,219,769	8,013,475,493	0.0520	415,599.78
Dev/Con Wtr	35,797.523	17,852,921		17,852,921	0.1614	2,881.42
Jef Pk Rec	59,215.046	30,101,512		30,101,512	0.2914	8,771.57
Leb Aqua Cntr	2,421,722.236	1,851,633,753	186,878,149	1,664,755,604	0.2400	393,849.34
Lyons/Meh Wtr	119,818.646	107,302,098		107,302,098	0.6894	73,973.87
N Lebanon Wtr	134,583.187	87,228,481		87,228,481	0.1420	12,276.06
Sw Hm Cem	750,839.955	594,464,171		594,464,171	0.2166	128,760.65
S Santiam Wtr	29,758.054	13,183,155		13,183,155	1.0044	13,241.18
TOTAL						1,049,353.87
<b>URBAN RENEWAL DISTRICTS</b>						
Albany	2,826,866.390	2,826,866.390		2,826,866.390	0.7967	2,071,213.44
Harrisburg	182,442.765	182,442.765		182,442.765	0.3014	290,694.26
Lebanon II	965,365.055	965,365.055		965,365.055	2.7130	2,535,343.17
Lebanon III	973,732.622	973,732.622		973,732.622	3.4500	290,303.28
Lebanon IV	962,821.787	962,821.787		962,821,787	0.2832	264,154.02
TOTAL						5,451,708.17

**SPECIAL ASSESSMENTS**

**DELINQUENT SEWER ASSESSMENTS:**

Albany	38,623.04
Brownsville	6,306.69
Halsey	41.80
Lebanon	69,487.46
Millersburg	5,936.76
Sweet Home	32,641.27
Tangent	1,891.24
TOTAL	154,928.26

Forest Patrol	191,862.12
Forest Patrol Surcharge	106,400.00
Little Muddy Creek Water Contr	6,700.00
Fertile District Imp Co	3,301.02
Grand Prairie Water Control Dist	15,132.00
Grand Prairie Water Control Dist	171,339.81
Mobile Home Ombudsman Fee	23,888.34
Additional Farmland Tax	14,175.63
Additional Forestland Tax	5,050.35
Delinquent Sewer	154,928.26
TOTAL	692,777.53

Corrections	11,235.20
Late Filing Penalties	72,002.85

**TOTAL IMPOSED AD VALOREM TAXES AND ASSESSMENTS**

133,342,334.25

**IMPOSED AD VALOREM TAX BY PROPERTY TYPE**

REAL PROPERTY	122,077,172.89
PERSONAL PROPERTY	3,745,218.53
MANUFACTURED STRUCTURES	1,603,945.16
UTILITIES	5,915,997.67
TOTAL	133,342,334.25

**LINN COUNTY TAX SUMMARY**

**2013-2014**

<b>CODE 00101</b> Value \$1,690 LINN CNTY 4.0436 ESD LBL 0.3049 LBCC 0.6915 MONROE SD 0.0000 MONROE RFD 0.0000 4H EXT 0.0520 Total 5.0920	<b>CODE 00707</b> Value \$38,941,076 LINN CNTY 4.0436 ESD LBL 0.3049 LANE CC 0.8646 HARSBG SD 5.9787 HARSBG RFD 1.1299 LINN SWTR 0.0000 4H EXT 0.0520 Total 12.3737	<b>CODE 00801</b> <b>ALBANY</b> Value \$2,007,807,660 LINN CNTY 3.8492 ESD LBL 0.2930 LBCC 0.6644 ALBANY SD 6.0682 ALBANY CTY 7.6592 LINN SWTR 0.0000 4H EXT 0.0495 ALBANY UR 0.7967 Total 19.3802	<b>CODE 00807</b> Value \$153,891,772 LINN CNTY 4.0436 ESD LBL 0.3049 LBCC 0.6915 ALBANY SD 6.3161 MILRSBG CTY 1.7000 JEFFRSN RFD 1.1955 LINN SWTR 0.0000 4H EXT 0.0520 Total 14.3036	<b>CODE 00814</b> Value \$1,767,992 LINN CNTY 4.0436 ESD LBL 0.3049 LBCC 0.6915 ALBANY SD 6.3161 HLY/SHD RFD 0.9894 LINN SWTR 0.0000 4H EXT 0.0520 Total 12.3975	<b>CODE 00820</b> Value \$2,940,405 LINN CNTY 4.0436 ESD LBL 0.3049 LBCC 0.6915 ALBANY SD 6.3161 SCIO RFD 1.9664 N LEB WTR 0.1420 LINN SWTR 0.0000 4H EXT 0.0520 Total 13.5165
<b>CODE 00701</b> <b>HARRISBURG</b> Value \$160,341,275 LINN CNTY 3.9156 ESD LBL 0.2743 LANE CC 0.8024 HARSBG SD 5.3777 HARSBG CTY 3.1482 HARSBG RFD 1.0163 LINN SWTR 0.0000 4H EXT 0.0468 HARSBG UR 1.5935 Total 16.1748	<b>CODE 00708</b> Value \$21,930,390 LINN CNTY 3.9156 ESD LBL 0.2743 LANE CC 0.8024 HARSBG SD 5.3777 HARSBG CTY 3.1482 HARSBG RFD 1.0163 LINN SWTR 0.0000 4H EXT 0.0468 HARSBG UR 1.5935 Total 16.1748	<b>CODE 00802</b> Value \$120,634,736 LINN CNTY 4.0436 ESD LBL 0.3049 LBCC 0.6915 ALBANY SD 6.3161 ALBANY RFD 2.1500 LINN SWTR 0.0000 4H EXT 0.0520 Total 13.5581	<b>CODE 00808</b> Value \$118,242,658 LINN CNTY 4.0436 ESD LBL 0.3049 LBCC 0.6915 ALBANY SD 6.3161 TANGENT RFD 2.5739 LINN SWTR 0.0000 4H EXT 0.0520 Total 13.9820	<b>CODE 00815</b> Value \$886,370 LINN CNTY 4.0436 ESD LBL 0.3049 LBCC 0.6915 ALBANY SD 6.3161 LEBANON RFD 2.4753 LINN SWTR 0.0000 4H EXT 0.0520 Total 13.8834	<b>CODE 00821</b> Value \$10,038,101 LINN CNTY 4.0436 ESD LBL 0.3049 LBCC 0.6915 ALBANY SD 6.3161 ALBANY RFD 2.1500 N LEB WTR 0.1420 LINN SWTR 0.0000 4H EXT 0.0520 Total 13.7001
<b>CODE 00702</b> Value \$78,117,133 LINN CNTY 4.0436 ESD LBL 0.3049 LANE CC 0.8646 HARSBG SD 5.9787 HARSBG RFD 1.1299 LINN SWTR 0.0000 4H EXT 0.0520 Total 12.3737	<b>CODE 00709</b> Value \$21,482,695 LINN CNTY 4.0436 ESD LBL 0.3049 LANE CC 0.8646 HARSBG SD 5.9787 HARSBG RFD 1.1299 LINN SWTR 0.0000 4H EXT 0.0520 Total 12.3737	<b>CODE 00803</b> Value \$6,949,890 LINN CNTY 4.0436 ESD LBL 0.3049 LBCC 0.6915 ALBANY SD 6.3161 LINN SWTR 0.0000 4H EXT 0.0520 Total 11.4081	<b>CODE 00809</b> Value \$102,319,133 LINN CNTY 4.0436 ESD LBL 0.3049 LBCC 0.6915 ALBANY SD 6.3161 JEFFRSN RFD 1.1955 LINN SWTR 0.0000 4H EXT 0.0520 Total 12.6036	<b>CODE 00816</b> Value \$13,281,100 LINN CNTY 4.0436 ESD LBL 0.3049 LBCC 0.6915 ALBANY SD 6.3161 CORVLS RFD 2.1140 LINN SWTR 0.0000 4H EXT 0.0520 Total 13.5221	<b>CODE 00822</b> Value \$61,070 LINN CNTY 4.0436 ESD LBL 0.3049 LBCC 0.6915 ALBANY SD 6.3161 N LEB WTR 0.1420 LINN SWTR 0.0000 4H EXT 0.0520 Total 11.5501
<b>CODE 00703</b> Value \$457,586 LINN CNTY 4.0436 ESD LBL 0.3049 LANE CC 0.8646 HARSBG SD 5.9787 BRNSVL RFD 2.2252 LINN SWTR 0.0000 4H EXT 0.0520 Total 13.4690	<b>CODE 00710</b> Value \$63,530 LINN CNTY 4.0436 ESD LBL 0.3049 LANE CC 0.8646 HARSBG SD 5.9787 HARSBG RFD 1.1299 LINN SWTR 0.0000 4H EXT 0.0520 Total 12.3737	<b>CODE 00804</b> Value \$42,348,791 LINN CNTY 4.0436 ESD LBL 0.3049 LBCC 0.6915 ALBANY SD 6.3161 ALBANY RFD 2.1500 LINN SWTR 0.0000 4H EXT 0.0520 Total 13.5581	<b>CODE 00810</b> Value \$8,045,270 LINN CNTY 4.0436 ESD LBL 0.3049 LBCC 0.6915 ALBANY SD 6.3161 JEFFRSN RFD 1.1955 DEV/CON WTR 0.1614 LINN SWTR 0.0000 4H EXT 0.0520 Total 12.7650	<b>CODE 00817</b> Value \$22,613,675 LINN CNTY 4.0436 ESD LBL 0.3049 LBCC 0.6915 ALBANY SD 6.3161 SCIO RFD 1.9664 LINN SWTR 0.0000 4H EXT 0.0520 Total 13.3745	<b>CODE 00823</b> Value \$3,180,107 LINN CNTY 4.0436 ESD LBL 0.3049 LBCC 0.6915 ALBANY SD 6.3161 LEBANON RFD 2.4753 N LEB WTR 0.1420 LINN SWTR 0.0000 4H EXT 0.0520 Total 14.0254
<b>CODE 00704</b> Value \$1,497,660 LINN CNTY 4.0436 ESD LBL 0.3049 LANE CC 0.8646 HARSBG SD 5.9787 HLY/SHD RFD 0.9894 LINN SWTR 0.0000 4H EXT 0.0520 Total 12.2332	<b>CODE 00711</b> Value \$13,000 LINN CNTY 3.9156 ESD LBL 0.2743 LANE CC 0.8024 HARSBG SD 5.3777 HARSBG RFD 1.0163 LINN SWTR 0.0000 4H EXT 0.0468 HARSBG UR 1.2420 Total 12.6751	<b>CODE 00805</b> <b>MILLERSBURG</b> Value \$199,463,039 LINN CNTY 4.0436 ESD LBL 0.3049 LBCC 0.6915 ALBANY SD 6.3161 MILRSBG CTY 1.7000 ALBANY RFD 2.1500 LINN SWTR 0.0000 4H EXT 0.0520 Total 15.2581	<b>CODE 00811</b> <b>TANGENT</b> Value \$121,725,195 LINN CNTY 4.0436 ESD LBL 0.3049 LBCC 0.6915 ALBANY SD 6.3161 TANGENT CTY 0.0000 TANGENT RFD 2.5739 LINN SWTR 0.0000 4H EXT 0.0520 Total 13.9820	<b>CODE 00818</b> Value \$2,583,035 LINN CNTY 4.0436 ESD LBL 0.3049 LBCC 0.6915 ALBANY SD 6.3161 ALBANY RFD 2.1500 S SANT WTR 1.0044 LINN SWTR 0.0000 4H EXT 0.0520 Total 14.5625	<b>CODE 00824</b> Value \$5,900,048 LINN CNTY 4.0436 ESD LBL 0.3049 LBCC 0.6915 ALBANY SD 6.3161 JEFFRSN RFD 1.1955 S SANT WTR 1.0044 LINN SWTR 0.0000 4H EXT 0.0520 Total 13.6080
<b>CODE 00705</b> Value \$5,941,985 LINN CNTY 4.0436 ESD LBL 0.3049 LANE CC 0.8646 HARSBG SD 5.9787 LINN SWTR 0.0000 4H EXT 0.0520 Total 11.2438	<b>CODE 00712</b> Value \$158,100 LINN CNTY 3.9156 ESD LBL 0.2743 LANE CC 0.8024 HARSBG SD 5.3777 HARSBG CTY 3.1482 LINN SWTR 0.0000 4H EXT 0.0468 HARSBG UR 1.4799 Total 15.0449	<b>CODE 00806</b> Value \$4,011,000 LINN CNTY 4.0436 ESD LBL 0.3049 LBCC 0.6915 ALBANY SD 6.3161 MILRSBG CTY 1.7000 LINN SWTR 0.0000 4H EXT 0.0520 Total 13.1081	<b>CODE 00813</b> Value \$682,300 LINN CNTY 4.0436 ESD LBL 0.3049 LBCC 0.6915 ALBANY SD 6.3161 TANGENT CTY 0.0000 LINN SWTR 0.0000 4H EXT 0.0520 Total 11.4081	<b>CODE 00819</b> Value \$391,488 LINN CNTY 4.0436 ESD LBL 0.3049 LBCC 0.6915 ALBANY SD 6.3161 SCIO RFD 1.9664 S SANT WTR 1.0044 LINN SWTR 0.0000 4H EXT 0.0520 Total 14.3789	<b>CODE 00825</b> Value \$5,283,841 LINN CNTY 4.0436 ESD LBL 0.3049 LBCC 0.6915 ALBANY SD 6.3161 JEFFRSN RFD 1.1955 LINN SWTR 0.0000 4H EXT 0.0520 Total 12.6036
<b>CODE 00706</b> Value \$779,492 LINN CNTY 4.0436 ESD LBL 0.3049 LANE CC 0.8646 HARSBG SD 5.9787 LINN SWTR 0.0000 4H EXT 0.0520 Total 11.2438					

Tax rates are shown in dollars per thousand of taxable value. Rates are before Measure 5 compression.

**LINN COUNTY TAX SUMMARY**

**2013-2014**

<b>CODE 00826</b> Value \$85,215,401 LINN CNTY 4.0436 ESD LBL 0.3049 LBCC 0.6915 ALBANY SD 6.3161 ALBANY RFD 2.1500 LINN S/WTR 0.0000 4H EXT 0.0520 Total 13.5581	<b>CODE 00834</b> Value \$24,919,915 LINN CNTY 4.0436 ESD LBL 0.3049 LBCC 0.6915 ALBANY SD 6.3161 HLY/SHD RFD 0.9894 OAKVL CNTR 0.0000 LINN S/WTR 0.0000 4H EXT 0.0520 Total 12.3975	<b>CODE 00847</b> Value \$466,570 LINN CNTY 3.8492 ESD LBL 0.2930 LBCC 0.6644 ALBANY SD 6.0682 ALBANY CTY 7.6592 LINN S/WTR 0.0000 4H EXT 0.0495 ALBANY UR 0.7967 Total 19.3802	<b>CODE 00905</b> <b>LEBANON</b> Value \$601,430,046 LINN CNTY 3.7515 ESD LBL 0.2461 LBCC 0.5580 LEBANON SD 5.6645 LEBANON CTY 5.6763 LEBANON RFD 2.0346 N LEB WTR 0.1420 LINN S/WTR 0.0000 LEB AQUA CNTR 0.1937 4H EXT 0.0421 LEBANON UR 3.3412 Total 21.5080	<b>CODE 00916</b> Value \$12,891,740 LINN CNTY 3.7515 ESD LBL 0.2461 LBCC 0.5580 LEBANON SD 5.6645 LEBANON CTY 5.6763 LEBANON RFD 2.0346 N LEB WTR 0.1420 LINN S/WTR 0.0000 LEB AQUA CNTR 0.1937 4H EXT 0.0421 LEBANON UR 3.3412 Total 21.6500	<b>CODE 00921</b> Value \$2,717,209 LINN CNTY 3.7515 ESD LBL 0.2461 LBCC 0.5580 LEBANON SD 5.6645 LEBANON CTY 5.6763 LEBANON RFD 2.0346 LEB AQUA CNTR 0.1937 4H EXT 0.0421 LEBANON UR 3.3412 Total 21.5080
<b>CODE 00827</b> Value \$217,236,676 LINN CNTY 3.8492 ESD LBL 0.2930 LBCC 0.6644 ALBANY SD 6.0682 ALBANY CTY 7.6592 LINN S/WTR 0.0000 4H EXT 0.0495 ALBANY UR 0.7967 Total 19.3802	<b>CODE 00835</b> Value \$5,656,329 LINN CNTY 4.0436 ESD LBL 0.3049 LBCC 0.6915 ALBANY SD 6.3161 CORVLS RFD 2.1140 OAKVL CNTR 0.0000 LINN S/WTR 0.0000 4H EXT 0.0520 Total 13.5221	<b>CODE 00848</b> Value \$156,370 LINN CNTY 3.8492 ESD LBL 0.2930 LBCC 0.6644 ALBANY SD 6.0682 ALBANY CTY 7.6592 LINN S/WTR 0.0000 4H EXT 0.0495 ALBANY UR 0.7967 Total 19.3802	<b>CODE 00907</b> Value \$3,101,820 LINN CNTY 4.0436 ESD LBL 0.3049 LBCC 0.6915 LEBANON SD 7.0231 LEBANON RFD 2.4753 N LEB WTR 0.1420 LINN S/WTR 0.0000 LEB AQUA CNTR 0.2400 4H EXT 0.0520 Total 14.9724	<b>CODE 00917</b> Value \$24,599,002 LINN CNTY 3.7515 ESD LBL 0.2461 LBCC 0.5580 LEBANON SD 5.6645 LEBANON CTY 5.6763 LEBANON RFD 2.0346 N LEB WTR 0.1420 LINN S/WTR 0.0000 LEB AQUA CNTR 0.1937 4H EXT 0.0421 LEBANON UR 3.3412 Total 21.5080	<b>CODE 00922</b> Value \$288,460 LINN CNTY 3.7515 ESD LBL 0.2461 LBCC 0.5580 LEBANON SD 5.6645 LEBANON CTY 5.6763 LEBANON RFD 2.0346 N LEB WTR 0.1420 LEB AQUA CNTR 0.1937 4H EXT 0.0421 LEBANON UR 3.3412 Total 21.6500
<b>CODE 00828</b> Value \$2,128,823 LINN CNTY 4.0436 ESD LBL 0.3049 LBCC 0.6915 ALBANY SD 6.3161 TANGENT RFD 2.5739 LINN S/WTR 0.0000 4H EXT 0.0520 Total 13.9820	<b>CODE 00836</b> Value \$196,300 LINN CNTY 4.0436 ESD LBL 0.3049 LBCC 0.6915 ALBANY SD 6.3161 OAKVL CNTR 0.0000 LINN S/WTR 0.0000 4H EXT 0.0520 Total 11.4081	<b>CODE 00901</b> Value \$53,160 LINN CNTY 4.0436 ESD LBL 0.3049 LBCC 0.6915 LEBANON SD 7.0231 SODAVLE CTY 0.4552 LINN S/WTR 0.0000 LEB AQUA CNTR 0.2400 4H EXT 0.0520 Total 12.8103	<b>CODE 00908</b> Value \$19,109,531 LINN CNTY 4.0436 ESD LBL 0.3049 LBCC 0.6915 LEBANON SD 7.0231 SCIO RFD 1.9664 LINN S/WTR 0.0000 LEB AQUA CNTR 0.2400 4H EXT 0.0520 Total 14.3215	<b>CODE 00918</b> Value \$25,543,005 LINN CNTY 4.0436 ESD LBL 0.3049 LBCC 0.6915 LEBANON SD 7.0231 LEBANON RFD 2.4753 LEB AQUA CNTR 0.2400 4H EXT 0.0520 Total 14.8304	<b>CODE 00923</b> Value \$158,700 LINN CNTY 3.7515 ESD LBL 0.2461 LBCC 0.5580 LEBANON SD 5.6645 LEBANON CTY 5.6763 LINN S/WTR 0.0000 LEB AQUA CNTR 0.1937 4H EXT 0.0421 LEBANON UR 2.9005 Total 19.0327
<b>CODE 00829</b> Value \$7,214,212 LINN CNTY 4.0436 ESD LBL 0.3049 LBCC 0.6915 ALBANY SD 6.3161 TANGENT RFD 2.5739 LINN S/WTR 0.0000 4H EXT 0.0520 Total 13.9820	<b>CODE 00840</b> Value \$50,150 LINN CNTY 4.0436 ESD LBL 0.3049 LBCC 0.6915 ALBANY SD 6.3161 MILRSBG CTY 1.7000 ALBANY RFD 2.1500 LINN S/WTR 0.0000 4H EXT 0.0520 Total 15.2581	<b>CODE 00902</b> Value \$490,241,875 LINN CNTY 4.0436 ESD LBL 0.3049 LBCC 0.6915 LEBANON SD 7.0231 LEBANON RFD 2.4753 LINN S/WTR 0.0000 LEB AQUA CNTR 0.2400 4H EXT 0.0520 Total 14.8304	<b>CODE 00909</b> Value \$1,179,905 LINN CNTY 4.0436 ESD LBL 0.3049 LBCC 0.6915 LEBANON SD 7.0231 LINN S/WTR 0.0000 LEB AQUA CNTR 0.2400 4H EXT 0.0520 Total 12.3551	<b>CODE 00919</b> Value \$850,211 LINN CNTY 4.0436 ESD LBL 0.3049 LBCC 0.6915 LEBANON SD 7.0231 LEB AQUA CNTR 0.2400 4H EXT 0.0520 Total 12.3551	<b>CODE 00924</b> Value \$11,000 LINN CNTY 3.7515 ESD LBL 0.2461 LBCC 0.5580 LEBANON SD 5.6645 LEBANON CTY 5.6763 LEB AQUA CNTR 0.1937 4H EXT 0.0421 LEBANON UR 2.9005 Total 19.0327
<b>CODE 00830</b> Value \$222,553,150 LINN CNTY 3.8492 ESD LBL 0.2930 LBCC 0.6644 ALBANY SD 6.0682 ALBANY CTY 7.6592 LINN S/WTR 0.0000 4H EXT 0.0495 ALBANY UR 0.7967 Total 19.3802	<b>CODE 00842</b> Value \$282,440 LINN CNTY 4.0436 ESD LBL 0.3049 LBCC 0.6915 ALBANY SD 6.3161 MILRSBG CTY 1.7000 JEFFRSN RFD 1.1955 JEFFRSN PARK 0.2914 LINN S/WTR 0.0000 4H EXT 0.0520 Total 14.5950	<b>CODE 00903</b> Value \$27,549,676 LINN CNTY 4.0436 ESD LBL 0.3049 LBCC 0.6915 LEBANON SD 7.0231 LINN S/WTR 0.0000 LEB AQUA CNTR 0.2400 4H EXT 0.0520 Total 12.3551	<b>CODE 00914</b> Value \$15,288,154 LINN CNTY 4.0436 ESD LBL 0.3049 LBCC 0.6915 LEBANON SD 7.0231 LEBANON RFD 2.4753 LINN S/WTR 0.0000 LEB AQUA CNTR 0.2400 4H EXT 0.0520 Total 14.8304	<b>CODE 00920</b> Value \$343,725 LINN CNTY 4.0436 ESD LBL 0.3049 LBCC 0.6915 LEBANON SD 7.0231 LEBANON RFD 2.4753 N LEB WTR 0.1420 LEB AQUA CNTR 0.2400 4H EXT 0.0520 Total 14.9724	<b>CODE 00925</b> Value \$61,552,920 LINN CNTY 3.7515 ESD LBL 0.2461 LBCC 0.5580 LEBANON SD 5.6645 LEBANON CTY 5.6763 LEBANON RFD 2.0346 LINN S/WTR 0.0000 LEB AQUA CNTR 0.1937 4H EXT 0.0421 LEBANON UR 3.3412 Total 21.5080
<b>CODE 00833</b> Value \$1,015,208 LINN CNTY 4.0436 ESD LBL 0.3049 LBCC 0.6915 ALBANY SD 6.3161 TANGENT RFD 2.5739 OAKVL CNTR 0.0000 LINN S/WTR 0.0000 4H EXT 0.0520 Total 13.9820	<b>CODE 00846</b> Value \$378,645,964 LINN CNTY 3.8492 ESD LBL 0.2930 LBCC 0.6644 ALBANY SD 6.0682 ALBANY CTY 7.6592 LINN S/WTR 0.0000 4H EXT 0.0495 ALBANY UR 0.7967 Total 19.3802	<b>CODE 00904</b> <b>SODAVILLE</b> Value \$14,104,078 LINN CNTY 4.0436 ESD LBL 0.3049 LBCC 0.6915 LEBANON SD 7.0231 SODAVLE CTY 0.4552 LEBANON RFD 2.4753 LINN S/WTR 0.0000 LEB AQUA CNTR 0.2400 4H EXT 0.0520 Total 15.2856			

Tax rates are shown in dollars per thousand of taxable value. Rates are before Measure 5 compression.

LINN COUNTY TAX SUMMARY

2013-2014

<b>CODE 00926</b> Value \$1,000 LINN CNTY 3.7515 ESD LBL 0.2461 LBCC 0.5580 LEBANON SD 5.6645 LEBANON CTY 5.6763 LINN S/WTR 0.0000 LEB AQUA CNTR 0.1937 4H EXT 0.0421 LEBANON UR 2.9005 Total 19.0327	<b>CODE 00933</b> Value \$27,177,844 LINN CNTY 4.0436 ESD LBL 0.3049 LBCC 0.6915 LEBANON SD 7.0231 LEBANON RFD 2.4753 LINN S/WTR 0.0000 LEB AQUA CNTR 0.2400 4H EXT 0.0520 Total 14.8304	<b>CODE 00940</b> Value \$94,336,723 LINN CNTY 4.0436 ESD LBL 0.3049 LBCC 0.6915 LEBANON SD 7.0231 LEBANON RFD 2.4753 LEB AQUA CNTR 0.2400 4H EXT 0.0520 Total 14.8304	<b>CODE 00946</b> Value \$21,773,952 LINN CNTY 4.0436 ESD LBL 0.3049 LBCC 0.6915 LEBANON SD 7.0231 LEBANON RFD 2.4753 LEB AQUA CNTR 0.2400 4H EXT 0.0520 Total 14.8304	<b>CODE 00951</b> Value \$11,650 LINN CNTY 4.0436 ESD LBL 0.3049 LBCC 0.6915 LEBANON SD 7.0231 LEBANON RFD 2.4753 N LEB WTR 0.1420 LEB AQUA CNTR 0.2400 4H EXT 0.0520 Total 14.9724	<b>CODE 00956</b> Value \$5,000 LINN CNTY 3.7515 ESD LBL 0.2461 LBCC 0.5580 LEBANON SD 5.6645 LEBANON CTY 5.6763 LINN S/WTR 0.0000 LEB AQUA CNTR 0.1937 4H EXT 0.0421 LEBANON UR 2.9005 Total 19.0327
<b>CODE 00927</b> Value \$1,147,230 LINN CNTY 3.8396 ESD LBL 0.2561 LBCC 0.5808 LEBANON SD 5.8981 LEBANON RFD 2.1132 LINN S/WTR 0.0000 LEB AQUA CNTR 0.2016 4H EXT 0.0437 LEBANON UR 1.8973 Total 14.8304	<b>CODE 00934</b> Value \$5,457,958 LINN CNTY 4.0436 ESD LBL 0.3049 LBCC 0.6915 LEBANON SD 7.0231 LEBANON RFD 2.4753 LINN S/WTR 0.0000 LEB AQUA CNTR 0.2400 4H EXT 0.0520 Total 14.8304	<b>CODE 00941</b> Value \$4,011,477 LINN CNTY 4.0436 ESD LBL 0.3049 LBCC 0.6915 LEBANON SD 7.0231 LEBANON RFD 2.4753 N LEB WTR 0.1420 LEB AQUA CNTR 0.2400 4H EXT 0.0520 Total 14.9724	<b>CODE 00947</b> Value \$108,846,698 LINN CNTY 3.7515 ESD LBL 0.2461 LBCC 0.5580 LEBANON SD 5.6645 LEBANON CTY 5.6763 LEBANON RFD 2.0346 LINN S/WTR 0.0000 LEB AQUA CNTR 0.1937 4H EXT 0.0421 LEBANON UR 3.3412 Total 21.5080	<b>CODE 00952</b> Value \$346,610 LINN CNTY 3.7515 ESD LBL 0.2461 LBCC 0.5580 LEBANON SD 5.6645 LEBANON CTY 5.6763 LEBANON RFD 2.0346 N LEB WTR 0.1420 LEB AQUA CNTR 0.1937 4H EXT 0.0421 LEBANON UR 3.3412 Total 21.6500	<b>CODE 00957</b> <b>WATERLOO</b> Value \$9,287,136 LINN CNTY 4.0436 ESD LBL 0.3049 LBCC 0.6915 LEBANON SD 7.0231 WTRLOO CTY 0.0000 LEBANON RFD 2.4753 LINN S/WTR 0.0000 LEB AQUA CNTR 0.2400 4H EXT 0.0520 Total 14.8304
<b>CODE 00928</b> Value \$7,000 LINN CNTY 3.8396 ESD LBL 0.2561 LBCC 0.5808 LEBANON SD 5.8981 LINN S/WTR 0.0000 LEB AQUA CNTR 0.2016 4H EXT 0.0437 LEBANON UR 1.5352 Total 12.3551	<b>CODE 00935</b> Value \$220,550 LINN CNTY 4.0436 ESD LBL 0.3049 LBCC 0.6915 LEBANON SD 7.0231 LEBANON RFD 2.4753 N LEB WTR 0.1420 LINN S/WTR 0.0000 LEB AQUA CNTR 0.2400 4H EXT 0.0520 Total 14.9724	<b>CODE 00942</b> Value \$9,257,774 LINN CNTY 4.0436 ESD LBL 0.3049 LBCC 0.6915 LEBANON SD 7.0231 LEB AQUA CNTR 0.2400 4H EXT 0.0520 Total 12.3551	<b>CODE 00948</b> Value \$46,538,163 LINN CNTY 4.0436 ESD LBL 0.3049 LBCC 0.6915 LEBANON SD 7.0231 LEBANON RFD 2.4753 N LEB WTR 0.1420 LINN S/WTR 0.0000 LEB AQUA CNTR 0.2400 4H EXT 0.0520 Total 14.9724	<b>CODE 00953</b> Value \$1,364,038 LINN CNTY 3.8396 ESD LBL 0.2561 LBCC 0.5808 LEBANON SD 5.8981 LEBANON RFD 2.1132 LINN S/WTR 0.0000 LEB AQUA CNTR 0.2016 4H EXT 0.0437 LEBANON UR 1.8973 Total 14.8304	<b>CODE 00958</b> Value \$141,140 LINN CNTY 3.7515 ESD LBL 0.2461 LBCC 0.5580 LEBANON SD 5.6645 LEBANON CTY 5.6763 LEBANON RFD 2.0346 LINN S/WTR 0.0000 LEB AQUA CNTR 0.1937 4H EXT 0.0421 LEBANON UR 3.3412 Total 21.5080
<b>CODE 00931</b> Value \$15,274,660 LINN CNTY 3.7515 ESD LBL 0.2461 LBCC 0.5580 LEBANON SD 5.6645 LEBANON CTY 5.6763 LEBANON RFD 2.0346 LINN S/WTR 0.0000 LEB AQUA CNTR 0.1937 4H EXT 0.0421 LEBANON UR 3.3412 Total 21.5080	<b>CODE 00936</b> Value \$353,930 LINN CNTY 4.0436 ESD LBL 0.3049 LBCC 0.6915 LEBANON SD 7.0231 LINN S/WTR 0.0000 LEB AQUA CNTR 0.2400 4H EXT 0.0520 Total 12.3551	<b>CODE 00943</b> Value \$16,680 LINN CNTY 3.7515 ESD LBL 0.2461 LBCC 0.5580 LEBANON SD 5.6645 LEBANON CTY 5.6763 LEBANON RFD 2.0346 N LEB WTR 0.1420 LEB AQUA CNTR 0.1937 4H EXT 0.0421 LEBANON UR 3.3412 Total 21.6500	<b>CODE 00949</b> Value \$352,780 LINN CNTY 3.7515 ESD LBL 0.2461 LBCC 0.5580 LEBANON SD 5.6645 LEBANON CTY 5.6763 LEBANON RFD 2.0346 N LEB WTR 0.1420 LINN S/WTR 0.0000 LEB AQUA CNTR 0.1937 4H EXT 0.0421 LEBANON UR 3.3412 Total 21.6500	<b>CODE 00954</b> Value \$86,095,530 LINN CNTY 3.7515 ESD LBL 0.2461 LBCC 0.5580 LEBANON SD 5.6645 LEBANON CTY 5.6763 LEBANON RFD 2.0346 LEBANON SD 2.0346 LINN S/WTR 0.0000 LEB AQUA CNTR 0.1937 4H EXT 0.0421 LEBANON UR 3.3412 Total 21.5080	<b>CODE 00960</b> Value \$499,150 LINN CNTY 4.0436 ESD LBL 0.3049 LBCC 0.6915 LEBANON SD 7.0231 LEBANON CTY 5.6763 LEBANON RFD 2.0346 LINN S/WTR 0.0000 LEB AQUA CNTR 0.2400 4H EXT 0.0520 Total 12.3551
<b>CODE 00932</b> Value \$4,041,338 LINN CNTY 4.0436 ESD LBL 0.3049 LBCC 0.6915 LEBANON SD 7.0231 BRNSVL RFD 2.2252 LINN S/WTR 0.0000 LEB AQUA CNTR 0.2400 4H EXT 0.0520 Total 14.5803	<b>CODE 00938</b> Value \$13,629,136 LINN CNTY 4.0436 ESD LBL 0.3049 LBCC 0.6915 LEBANON SD 7.0231 SCIO RFD 1.9664 LINN S/WTR 0.0000 LEB AQUA CNTR 0.2400 4H EXT 0.0520 Total 14.3215	<b>CODE 00944</b> Value \$16,336,905 LINN CNTY 4.0436 ESD LBL 0.3049 LBCC 0.6915 LEBANON SD 7.0231 SCIO RFD 1.9664 LINN S/WTR 0.0000 LEB AQUA CNTR 0.2400 4H EXT 0.0520 Total 14.3215	<b>CODE 00945</b> Value \$5,494,812 LINN CNTY 4.0436 ESD LBL 0.3049 LBCC 0.6915 LEBANON SD 7.0231 LEB AQUA CNTR 0.2400 4H EXT 0.0520 Total 12.3551	<b>CODE 00955</b> Value \$25,000 LINN CNTY 3.8396 ESD LBL 0.2561 LBCC 0.5808 LEBANON SD 5.8981 LINN S/WTR 0.0000 LEB AQUA CNTR 0.2016 4H EXT 0.0437 LEBANON UR 1.5352 Total 12.3551	<b>CODE 00962</b> Value \$2,561,980 LINN CNTY 4.0436 ESD LBL 0.3049 LBCC 0.6915 LEBANON SD 7.0231 TANGENT RFD 2.5739 LINN S/WTR 0.0000 LEB AQUA CNTR 0.2400 4H EXT 0.0520 Total 14.9290

Tax rates are shown in dollars per thousand of taxable value.  
Rates are before Measure 5 compression.



**LINN COUNTY TAX SUMMARY**

**2013-2014**

<b>CODE 00963</b> Value \$9,151 LINN CNTY 4.0436 ESD LBL 0.3049 LBCC 0.6915 LEBANON SD 7.0231 N LEB WTR 0.1420 LINN S/WTR 0.0000 LEB AQUA CNTR 0.2400 4H EXT 0.0520 Total 12.4971	<b>CODE 00969</b> Value \$8,941,520 LINN CNTY 3.7515 ESD LBL 0.2461 LBCC 0.5580 LEBANON SD 5.6645 LEBANON CTY 5.6763 LEBANON RFD 2.0346 LINN S/WTR 0.0000 LEB AQUA CNTR 0.1937 4H EXT 0.0421 LEBANON UR 3.3412 Total 21.5080	<b>CODE 00974</b> Value \$1,418,183 LINN CNTY 4.0436 ESD LBL 0.3049 LBCC 0.6915 LEBANON SD 7.0231 SW HM FIRE/AM 1.8733 LINN S/WTR 0.0000 LEB AQUA CNTR 0.2400 4H EXT 0.0520 Total 14.2284	<b>CODE 02701</b> <b>LYONS</b> Value \$72,776,150 LINN CNTY 4.0436 ESD WILL 0.2967 CHEM CC 0.8573 CHEM LIB 0.0818 N SANT SD 5.4934 LYONS CTY 1.8926 LYONS RFD 1.6469 LY/MEH WTR 0.6894 LINN S/WTR 0.0000 4H EXT 0.0520 Total 15.0537	<b>CODE 02706</b> Value \$575,589 LINN CNTY 4.0436 ESD WILL 0.2967 CHEM CC 0.8573 CHEM LIB 0.0818 N SANT SD 5.4934 LY/MEH WTR 0.6894 LINN S/WTR 0.0000 4H EXT 0.0520 Total 11.5142	<b>CODE 02712</b> Value \$95,040 LINN CNTY 4.0436 ESD WILL 0.2967 LBCC 0.6915 N SANT SD 5.4934 LINN S/WTR 0.0000 4H EXT 0.0520 Total 10.5772
<b>CODE 00964</b> Value \$1,048,512 LINN CNTY 4.0436 ESD LBL 0.3049 LBCC 0.6915 LEBANON SD 7.0231 LEBANON RFD 2.4753 LINN S/WTR 0.0000 LEB AQUA CNTR 0.2400 4H EXT 0.0520 Total 14.8304	<b>CODE 00970</b> Value \$646,632 LINN CNTY 3.9767 ESD LBL 0.2999 LBCC 0.6801 LEBANON SD 6.9068 LEBANON RFD 2.4344 LINN S/WTR 0.0000 LEB AQUA CNTR 0.2361 4H EXT 0.0512 LEBANON UR 0.2452 Total 14.8304	<b>CODE 00975</b> Value \$1,155,671 LINN CNTY 4.0436 ESD LBL 0.3049 LBCC 0.6915 LEBANON SD 7.0231 SW HM FIRE/AM 1.8733 LINN S/WTR 0.0000 LEB AQUA CNTR 0.2400 4H EXT 0.0520 Total 14.2284	<b>CODE 02702</b> Value \$6,929,394 LINN CNTY 4.0436 ESD WILL 0.2967 CHEM CC 0.8573 CHEM LIB 0.0818 N SANT SD 5.4934 LINN S/WTR 0.0000 4H EXT 0.0520 Total 10.8248	<b>CODE 02707</b> Value \$120,410 LINN CNTY 4.0436 ESD WILL 0.2967 CHEM CC 0.8573 CHEM LIB 0.0818 N SANT SD 5.4934 LYONS CTY 1.8926 LYONS RFD 1.6469 LINN S/WTR 0.0000 4H EXT 0.0520 Total 14.3643	<b>CODE 02713</b> Value \$820,985 LINN CNTY 4.0436 ESD WILL 0.2967 LBCC 0.6915 N SANT SD 5.4934 LYONS RFD 1.6469 LINN S/WTR 0.0000 4H EXT 0.0520 Total 12.2241
<b>CODE 00965</b> Value \$3,315,106 LINN CNTY 4.0436 ESD LBL 0.3049 LBCC 0.6915 LEBANON SD 7.0231 ALBANY RFD 2.1500 LINN S/WTR 0.0000 LEB AQUA CNTR 0.2400 4H EXT 0.0520 Total 14.5051	<b>CODE 00971</b> Value \$617,140 LINN CNTY 3.9767 ESD LBL 0.2999 LBCC 0.6801 LEBANON SD 6.9068 LEBANON RFD 2.4344 LINN S/WTR 0.0000 LEB AQUA CNTR 0.2361 4H EXT 0.0512 LEBANON UR 0.2452 Total 14.8304	<b>CODE 00977</b> Value \$8,036,132 LINN CNTY 3.7515 ESD LBL 0.2461 LBCC 0.5580 LEBANON SD 5.6645 LEBANON CTY 5.6763 LEBANON RFD 2.0346 LINN S/WTR 0.0000 LEB AQUA CNTR 0.1937 4H EXT 0.0421 LEBANON UR 3.3412 Total 21.5080	<b>CODE 02703</b> Value \$42,941,335 LINN CNTY 4.0436 ESD WILL 0.2967 CHEM CC 0.8573 CHEM LIB 0.0818 N SANT SD 5.4934 LYONS RFD 1.6469 LINN S/WTR 0.0000 4H EXT 0.0520 Total 12.4717	<b>CODE 02708</b> Value \$41,860 LINN CNTY 4.0436 ESD WILL 0.2967 CHEM CC 0.8573 CHEM LIB 0.0818 N SANT SD 5.4934 LYONS CTY 1.8926 LINN S/WTR 0.0000 4H EXT 0.0520 Total 12.7174	<b>CODE 02714</b> Value \$1,142,004 LINN CNTY 4.0436 ESD WILL 0.2967 LBCC 0.6915 N SANT SD 5.4934 STAYTON RFD 1.5664 SANT WTR 0.0000 LINN S/WTR 0.0000 4H EXT 0.0520 Total 12.1436
<b>CODE 00966</b> Value \$782,460 LINN CNTY 4.0436 ESD LBL 0.3049 LBCC 0.6915 LEBANON SD 7.0231 TANGENT RFD 2.5739 LINN S/WTR 0.0000 LEB AQUA CNTR 0.2400 4H EXT 0.0520 Total 14.9290	<b>CODE 00972</b> Value \$1,455,340 LINN CNTY 3.7515 ESD LBL 0.2461 LBCC 0.5580 LEBANON SD 5.6645 LEBANON CTY 5.6763 LEBANON RFD 2.0346 LINN S/WTR 0.0000 LEB AQUA CNTR 0.1937 4H EXT 0.0421 LEBANON UR 3.3412 Total 21.5080	<b>CODE 00978</b> Value \$2,785,330 LINN CNTY 3.7515 ESD LBL 0.2461 LBCC 0.5580 LEBANON SD 5.6645 LEBANON CTY 5.6763 LEBANON RFD 2.0346 LINN S/WTR 0.0000 LEB AQUA CNTR 0.1937 4H EXT 0.0421 LEBANON UR 3.3412 Total 21.5080	<b>CODE 02704</b> Value \$376,254 LINN CNTY 4.0436 ESD WILL 0.2967 CHEM CC 0.8573 CHEM LIB 0.0818 N SANT SD 5.4934 STAYTON RFD 1.5664 LINN S/WTR 0.0000 4H EXT 0.0520 Total 12.3912	<b>CODE 02709</b> Value \$151,300 LINN CNTY 4.0436 ESD WILL 0.2967 CHEM CC 0.8573 CHEM LIB 0.0818 N SANT SD 5.4934 LYONS CTY 1.8926 LY/MEH WTR 0.6894 LINN S/WTR 0.0000 4H EXT 0.0520 Total 13.4068	<b>CODE 04001</b> Value \$10,796,350 LINN CNTY 4.0436 ESD LANE 0.2232 LANE CC 0.8646 EUGENE SD 7.8436 HARSBG RFD 1.1299 LINN S/WTR 0.0000 4H EXT 0.0520 Total 14.1569
<b>CODE 00967</b> Value \$536,780 LINN CNTY 4.0436 ESD LBL 0.3049 LBCC 0.6915 LEBANON SD 7.0231 TANGENT RFD 2.5739 LINN S/WTR 0.0000 LEB AQUA CNTR 0.2400 4H EXT 0.0520 Total 14.9290	<b>CODE 00973</b> Value \$13,236,020 LINN CNTY 3.7515 ESD LBL 0.2461 LBCC 0.5580 LEBANON SD 5.6645 LEBANON CTY 5.6763 LEBANON RFD 2.0346 LINN S/WTR 0.0000 LEB AQUA CNTR 0.1937 4H EXT 0.0421 LEBANON UR 3.3412 Total 21.5080	<b>CODE 00979</b> Value \$13,638,270 LINN CNTY 3.7515 ESD LBL 0.2461 LBCC 0.5580 LEBANON SD 5.6645 LEBANON CTY 5.6763 LEBANON RFD 2.0346 LINN S/WTR 0.0000 LEB AQUA CNTR 0.1937 4H EXT 0.0421 LEBANON UR 3.3412 Total 21.5080	<b>CODE 02705</b> Value \$33,799,059 LINN CNTY 4.0436 ESD WILL 0.2967 CHEM CC 0.8573 CHEM LIB 0.0818 N SANT SD 5.4934 LYONS RFD 1.6469 LY/MEH WTR 0.6894 LINN S/WTR 0.0000 4H EXT 0.0520 Total 13.1611	<b>CODE 02710</b> Value \$87,801,236 LINN CNTY 4.0436 ESD WILL 0.2967 LBCC 0.6915 N SANT SD 5.4934 STAYTON RFD 1.5664 LINN S/WTR 0.0000 4H EXT 0.0520 Total 12.1436	<b>CODE 05501</b> <b>SWEET HOME</b> Value \$383,636,844 LINN CNTY 4.0436 ESD LBL 0.3049 LBCC 0.6915 SW HM SD 7.0078 SW HM CTY 8.6357 SW HM FIRE/AM 1.8733 SW HM CEM 0.2166 LINN S/WTR 0.0000 4H EXT 0.0520 Total 22.8254
<b>CODE 00968</b> Value \$9,647,063 LINN CNTY 3.9767 ESD LBL 0.2999 LBCC 0.6801 LEBANON SD 6.9068 LEBANON RFD 2.4344 LINN S/WTR 0.0000 LEB AQUA CNTR 0.2361 4H EXT 0.0512 LEBANON UR 0.2452 Total 14.8304	<b>CODE 00974</b> Value \$13,638,270 LINN CNTY 3.7515 ESD LBL 0.2461 LBCC 0.5580 LEBANON SD 5.6645 LEBANON CTY 5.6763 LEBANON RFD 2.0346 LINN S/WTR 0.0000 LEB AQUA CNTR 0.1937 4H EXT 0.0421 LEBANON UR 3.3412 Total 21.5080			<b>CODE 02711</b> Value \$4,149,196 LINN CNTY 4.0436 ESD WILL 0.2967 LBCC 0.6915 N SANT SD 5.4934 SCIO RFD 1.9664 LINN S/WTR 0.0000 4H EXT 0.0520 Total 12.5436	<b>CODE 05502</b> Value \$121,772,593 LINN CNTY 4.0436 ESD LBL 0.3049 LBCC 0.6915 SW HM SD 7.0078 SW HM FIRE/AM 1.8733 SW HM CEM 0.2166 LINN S/WTR 0.0000 4H EXT 0.0520 Total 14.1897

Tax rates are shown in dollars per thousand of taxable value. Rates are before Measure 5 compression.

LINN COUNTY TAX SUMMARY

2013-2014

<b>CODE 05503</b> Value \$11,423,351 LINN CNTY 4.0436 ESD LBL 0.3049 LBCC 0.6915 SW HM SD 7.0078 SW HM CEM 0.2166 LINN S/WTR 0.0000 4H EXT 0.0520 Total 12.3164	<b>CODE 05517</b> Value \$142,681 LINN CNTY 4.0436 ESD LBL 0.3049 LBCC 0.6915 SW HM SD 7.0078 LEBANON RFD 2.4753 LINN S/WTR 0.0000 4H EXT 0.0520 Total 14.5751	<b>CODE 05526</b> Value \$4,207,063 LINN CNTY 4.0436 ESD LBL 0.3049 LBCC 0.6915 SW HM SD 7.0078 SW HM AM 0.3500 4H EXT 0.0520 Total 12.4498	<b>CODE 09504</b> Value \$1,411,584 LINN CNTY 4.0436 ESD LBL 0.3049 LBCC 0.6915 SCIO SD 4.5080 SCIO SD BNDS 0.8680 SCIO RFD 1.9664 S SANT WTR 1.0044 LINN S/WTR 0.0000 4H EXT 0.0520 Total 13.4388	<b>CODE 09512</b> Value \$1,956,294 LINN CNTY 4.0436 ESD LBL 0.3049 LBCC 0.6915 SCIO SD 4.5080 LINN S/WTR 0.0000 4H EXT 0.0520 Total 9.6000	<b>CODE 12703</b> Value \$31,481,478 LINN CNTY 4.0436 ESD LBL 0.3049 CHEM CC 0.8573 CHEM LIB 0.0818 SANT CAN SD 4.8880 LINN S/WTR 0.0000 4H EXT 0.0520 Total 10.2276
<b>CODE 05504</b> Value \$18,751,391 LINN CNTY 4.0436 ESD LBL 0.3049 LBCC 0.6915 SW HM SD 7.0078 LINN S/WTR 0.0000 4H EXT 0.0520 Total 12.0998	<b>CODE 05518</b> Value \$240,930 LINN CNTY 4.0436 ESD LBL 0.3049 LBCC 0.6915 SW HM SD 7.0078 LEBANON RFD 2.4753 4H EXT 0.0520 Total 14.5751	<b>CODE 05527</b> Value \$615,544 LINN CNTY 4.0436 ESD LBL 0.3049 LBCC 0.6915 SW HM SD 7.0078 SW HM AM 0.3500 SW HM CEM 0.2166 4H EXT 0.0520 Total 12.6664	<b>CODE 09507</b> Value \$1,008,588 LINN CNTY 4.0436 ESD LBL 0.3049 LBCC 0.6915 SCIO SD 4.5080 SCIO SD BNDS 0.8680 STAYTON RFD 1.5664 LINN S/WTR 0.0000 4H EXT 0.0520 Total 12.0344	<b>CODE 09513</b> Value \$4,188,361 LINN CNTY 4.0436 ESD LBL 0.3049 LBCC 0.6915 SCIO SD 4.5080 SCIO RFD 1.9664 LINN S/WTR 0.0000 4H EXT 0.0520 Total 11.5664	<b>CODE 12704</b> Value \$18,316,870 LINN CNTY 4.0436 ESD LBL 0.3049 CHEM CC 0.8573 CHEM LIB 0.0818 SANT CAN SD 4.8880 LYONS RFD 1.6469 LINN S/WTR 0.0000 4H EXT 0.0520 Total 11.8745
<b>CODE 05506</b> Value \$103,603,735 LINN CNTY 4.0436 ESD LBL 0.3049 LBCC 0.6915 SW HM SD 7.0078 SW HM FIRE/AM 1.8733 LINN S/WTR 0.0000 4H EXT 0.0520 Total 13.9731	<b>CODE 05521</b> Value \$167,000 LINN CNTY 4.0436 ESD LBL 0.3049 LBCC 0.6915 SW HM SD 7.0078 SW HM CTY 8.6357 SW HM CEM 0.2166 LINN S/WTR 0.0000 4H EXT 0.0520 Total 20.9521	<b>CODE 05528</b> Value \$84,710 LINN CNTY 4.0436 ESD LBL 0.3049 LBCC 0.6915 SW HM SD 7.0078 SW HM AM 0.3500 MOHAWK RFD 1.9126 LINN S/WTR 0.0000 4H EXT 0.0520 Total 14.3624	<b>CODE 09508</b> Value \$29,514,607 LINN CNTY 4.0436 ESD LBL 0.3049 LBCC 0.6915 SCIO SD 4.5080 SCIO SD BNDS 0.8680 SCIO RFD 1.9664 SANT WTR 0.0000 LINN S/WTR 0.0000 4H EXT 0.0520 Total 12.4344	<b>CODE 09514</b> Value \$7,873,846 LINN CNTY 4.0436 ESD LBL 0.3049 LBCC 0.6915 SCIO SD 4.5080 LYONS RFD 1.6469 LINN S/WTR 0.0000 4H EXT 0.0520 Total 11.2469	<b>CODE 12705</b> Value \$18,977,103 LINN CNTY 4.0436 ESD LBL 0.3049 CHEM CC 0.8573 CHEM LIB 0.0818 SANT CAN SD 4.8880 GATES RFD 2.3000 LINN S/WTR 0.0000 4H EXT 0.0520 Total 12.5276
<b>CODE 05511</b> Value \$5,653,544 LINN CNTY 4.0436 ESD LBL 0.3049 LBCC 0.6915 SW HM SD 7.0078 4H EXT 0.0520 Total 12.0998	<b>CODE 05523</b> Value \$515,022 LINN CNTY 4.0436 ESD LBL 0.3049 LBCC 0.6915 SW HM SD 7.0078 SW HM AM 0.3500 SW HM CEM 0.2166 LINN S/WTR 0.0000 4H EXT 0.0520 Total 12.6664	<b>CODE 07901</b> Value \$70,471 LINN CNTY 4.0436 ESD LANE 0.2232 LANE CC 0.8646 MARCOLA SD 4.6687 LINN S/WTR 0.0000 4H EXT 0.0520 Total 9.8521	<b>CODE 09509</b> Value \$969,149 LINN CNTY 4.0436 ESD LBL 0.3049 LBCC 0.6915 SCIO SD 4.5080 SCIO SD BNDS 0.8680 STAYTON RFD 1.5664 SANT WTR 0.0000 LINN S/WTR 0.0000 4H EXT 0.0520 Total 12.0344	<b>CODE 09515</b> Value \$241,110 LINN CNTY 4.0436 ESD LBL 0.3049 LBCC 0.6915 SCIO SD 4.5080 SCIO SD BNDS 0.8680 LYONS RFD 1.6469 LINN S/WTR 0.0000 4H EXT 0.0520 Total 12.1149	<b>CODE 12707</b> <b>GATES</b> Value \$3,255,932 LINN CNTY 4.0436 ESD LBL 0.3049 CHEM CC 0.8573 CHEM LIB 0.0818 SANT CAN SD 4.8880 GATES CTY 0.2824 GATES RFD 2.3000 LINN S/WTR 0.0000 4H EXT 0.0520 Total 12.8100
<b>CODE 05512</b> Value \$7,349,718 LINN CNTY 4.0436 ESD LBL 0.3049 LBCC 0.6915 SW HM SD 7.0078 SW HM CEM 0.2166 4H EXT 0.0520 Total 12.3164	<b>CODE 05524</b> Value \$69,916,513 LINN CNTY 4.0436 ESD LBL 0.3049 LBCC 0.6915 SW HM SD 7.0078 SW HM AM 0.3500 LINN S/WTR 0.0000 4H EXT 0.0520 Total 12.4498	<b>CODE 09502</b> Value \$164,109,541 LINN CNTY 4.0436 ESD LBL 0.3049 LBCC 0.6915 SCIO SD 4.5080 SCIO SD BNDS 0.8680 SCIO RFD 1.9664 LINN S/WTR 0.0000 4H EXT 0.0520 Total 12.4344	<b>CODE 09510</b> <b>SCIO</b> Value \$40,633,642 LINN CNTY 4.0436 ESD LBL 0.3049 LBCC 0.6915 SCIO SD 4.5080 SCIO SD BNDS 0.8680 SCIO CTY 4.9057 SCIO RFD 1.9664 LINN S/WTR 0.0000 4H EXT 0.0520 Total 17.3401	<b>CODE 12701</b> <b>MILL CITY</b> Value \$63,161,498 LINN CNTY 4.0436 ESD LBL 0.3049 CHEM CC 0.8573 CHEM LIB 0.0818 SANT CAN SD 4.8880 MILL CTY 4.1578 MILL CTY RFD 1.8048 LINN S/WTR 0.0000 4H EXT 0.0520 Total 16.1902	<b>CODE 12708</b> Value \$1,474,792 LINN CNTY 4.0436 ESD LBL 0.3049 CHEM CC 0.8573 CHEM LIB 0.0818 SANT CAN SD 4.8880 IDANHA RFD 1.6592 LINN S/WTR 0.0000 4H EXT 0.0520 Total 11.8868
<b>CODE 05513</b> Value \$68,984,099 LINN CNTY 4.0436 ESD LBL 0.3049 LBCC 0.6915 SW HM SD 7.0078 SW HM FIRE/AM 1.8733 SW HM CEM 0.2166 4H EXT 0.0520 Total 14.1897	<b>CODE 05525</b> Value \$3,795,978 LINN CNTY 4.0436 ESD LBL 0.3049 LBCC 0.6915 SW HM SD 7.0078 BRNSVL RFD 2.2252 SW HM AM 0.3500 LINN S/WTR 0.0000 4H EXT 0.0520 Total 14.6750	<b>CODE 09503</b> Value \$9,797,400 LINN CNTY 4.0436 ESD LBL 0.3049 LBCC 0.6915 SCIO SD 4.5080 SCIO SD BNDS 0.8680 LINN S/WTR 0.0000 4H EXT 0.0520 Total 10.4680		<b>CODE 12702</b> Value \$26,180,502 LINN CNTY 4.0436 ESD LBL 0.3049 CHEM CC 0.8573 CHEM LIB 0.0818 SANT CAN SD 4.8880 MILL CTY RFD 1.8048 LINN S/WTR 0.0000 4H EXT 0.0520 Total 12.0324	
<b>CODE 05515</b> Value \$16,565,958 LINN CNTY 4.0436 ESD LBL 0.3049 LBCC 0.6915 SW HM SD 7.0078 SW HM FIRE/AM 1.8733 4H EXT 0.0520 Total 13.9731					

Tax rates are shown in dollars per thousand of taxable value. Rates are before Measure 5 compression.



**LINN COUNTY TAX SUMMARY**

**2013-2014**

<b>CODE 12709</b> <b>IDANHA</b> Value \$2,985,850 LINN CNTY 4.0436 ESD LBL 0.3049 CHEM CC 0.8573 CHEM LIB 0.0818 SANT CAN SD 4.8880 IDANHA CTY 2.5029 IDANHA RFD 1.6592 LINN S/WTR 0.0000 4H EXT 0.0520 Total 14.3897	<b>CODE 14015</b> Value \$3,716,556 LINN CNTY 4.0436 ESD WILL 0.2967 LBCC 0.6915 JEFFRSN SD 4.8468 SCIO RFD 1.9664 JEFFRSN PARK 0.2914 SANT WTR 0.0000 LINN S/WTR 0.0000 4H EXT 0.0520 Total 12.1884	<b>CODE 14020</b> Value \$345,731 LINN CNTY 4.0436 ESD WILL 0.2967 LBCC 0.6915 JEFFRSN SD 4.8468 MILRSBG CTY 1.7000 JEFFRSN RFD 1.1955 JEFFRSN PARK 0.2914 LINN S/WTR 0.0000 4H EXT 0.0520 Total 13.1175	<b>CODE 50905</b> Value \$337,630 LINN CNTY 4.0436 ESD LBL 0.3049 LBCC 0.6915 CORVLS SD 5.9614 CORVLS SD BNDS 1.6536 HLY/SHD RFD 0.9894 LINN S/WTR 0.0000 4H EXT 0.0520 Total 13.6964	<b>CODE 55205</b> Value \$7,229,861 LINN CNTY 4.0436 ESD LBL 0.3049 LBCC 0.6915 C LINN SD 4.6179 TANGENT RFD 2.5739 LINN S/WTR 0.0000 4H EXT 0.0520 Total 12.2838	<b>CODE 55211</b> Value \$2,972,214 LINN CNTY 4.0436 ESD LBL 0.3049 LBCC 0.6915 C LINN SD 4.6179 HARSBG RFD 1.1299 LINN S/WTR 0.0000 4H EXT 0.0520 Total 10.8398
<b>CODE 12710</b> Value \$454,640 LINN CNTY 4.0436 ESD LBL 0.3049 CHEM CC 0.8573 CHEM LIB 0.0818 SANT CAN SD 4.8880 IDANHA CTY 2.5029 LINN S/WTR 0.0000 4H EXT 0.0520 Total 12.7305	<b>CODE 14016</b> Value \$7,722,212 LINN CNTY 4.0436 ESD WILL 0.2967 LBCC 0.6915 JEFFRSN SD 4.8468 JEFFRSN RFD 1.1955 JEFFRSN PARK 0.2914 LINN S/WTR 0.0000 4H EXT 0.0520 Total 11.4175	<b>CODE 50901</b> Value \$111,290,809 LINN CNTY 4.0436 ESD LBL 0.3049 LBCC 0.6915 CORVLS SD 5.9614 CORVLS SD BNDS 1.6536 CORVLS RFD 2.1140 LINN S/WTR 0.0000 4H EXT 0.0520 Total 14.8210	<b>CODE 50906</b> Value \$13,124,513 LINN CNTY 4.0436 ESD LBL 0.3049 LBCC 0.6915 BENTON LIB 0.3947 CORVLS SD 5.9614 CORVLS SD BNDS 1.6536 LINN S/WTR 0.0000 4H EXT 0.0520 Total 13.1017	<b>CODE 55206</b> Value \$2,246,625 LINN CNTY 4.0436 ESD LBL 0.3049 LBCC 0.6915 C LINN SD 4.6179 HARSBG RFD 1.1299 LINN S/WTR 0.0000 4H EXT 0.0520 Total 10.8398	<b>CODE 55212</b> <b>HALSEY</b> Value \$46,765,068 LINN CNTY 4.0436 ESD LBL 0.3049 LBCC 0.6915 C LINN SD 4.6179 HALSEY CTY 6.7874 HLY/SHD RFD 0.9894 LINN S/WTR 0.0000 4H EXT 0.0520 Total 17.4867
<b>CODE 14012</b> Value \$380,369 LINN CNTY 4.0436 ESD WILL 0.2967 LBCC 0.6915 JEFFRSN SD 4.8468 SCIO RFD 1.9664 JEFFRSN PARK 0.2914 LINN S/WTR 0.0000 4H EXT 0.0520 Total 12.1884	<b>CODE 14017</b> Value \$4,822,053 LINN CNTY 4.0436 ESD WILL 0.2967 LBCC 0.6915 JEFFRSN SD 4.8468 JEFFRSN RFD 1.1955 JEFFRSN PARK 0.2914 SANT WTR 0.0000 LINN S/WTR 0.0000 4H EXT 0.0520 Total 11.4175	<b>CODE 50902</b> Value \$406,990 LINN CNTY 4.0436 ESD LBL 0.3049 LBCC 0.6915 CORVLS SD 5.9614 CORVLS SD BNDS 1.6536 LINN S/WTR 0.0000 4H EXT 0.0520 Total 12.7070	<b>CODE 55202</b> Value \$1,180,560 LINN CNTY 4.0436 ESD LBL 0.3049 LBCC 0.6915 C LINN SD 4.6179 HALSEY CTY 6.7874 LINN S/WTR 0.0000 4H EXT 0.0520 Total 16.4973	<b>CODE 55207</b> Value \$12,647,882 LINN CNTY 4.0436 ESD LBL 0.3049 LBCC 0.6915 C LINN SD 4.6179 4H EXT 0.0520 Total 9.7099	<b>CODE 55214</b> Value \$4,175,339 LINN CNTY 4.0436 ESD LBL 0.3049 LBCC 0.6915 C LINN SD 4.6179 HLY/SHD RFD 0.9894 OAKVL CNTR 0.0000 LINN S/WTR 0.0000 4H EXT 0.0520 Total 10.6993
<b>CODE 14013</b> Value \$32,070 LINN CNTY 4.0436 ESD WILL 0.2967 LBCC 0.6915 JEFFRSN SD 4.8468 SCIO RFD 1.9664 JEFFRSN PARK 0.2914 S SANT WTR 1.0044 LINN S/WTR 0.0000 4H EXT 0.0520 Total 13.1928	<b>CODE 14018</b> Value \$2,864,930 LINN CNTY 4.0436 ESD WILL 0.2967 LBCC 0.6915 JEFFRSN SD 4.8468 JEFFRSN RFD 1.1955 JEFFRSN PARK 0.2914 S SANT WTR 1.0044 LINN S/WTR 0.0000 4H EXT 0.0520 Total 12.4219	<b>CODE 50903</b> Value \$8,564,189 LINN CNTY 4.0436 ESD LBL 0.3049 LBCC 0.6915 CORVLS SD 5.9614 CORVLS SD BNDS 1.6536 ALBANY RFD 2.1500 LINN S/WTR 0.0000 4H EXT 0.0520 Total 14.8570	<b>CODE 55203</b> Value \$122,508,549 LINN CNTY 4.0436 ESD LBL 0.3049 LBCC 0.6915 C LINN SD 4.6179 BRNSVL RFD 2.2252 LINN S/WTR 0.0000 4H EXT 0.0520 Total 11.9351	<b>CODE 55208</b> Value \$503,690 LINN CNTY 4.0436 ESD LBL 0.3049 LBCC 0.6915 C LINN SD 4.6179 SW HM FIRE/AM 1.8733 LINN S/WTR 0.0000 4H EXT 0.0520 Total 11.5832	<b>CODE 55215</b> Value \$341,600 LINN CNTY 4.0436 ESD LBL 0.3049 LBCC 0.6915 C LINN SD 4.6179 OAKVL CNTR 0.0000 LINN S/WTR 0.0000 4H EXT 0.0520 Total 9.7099
<b>CODE 14014</b> Value \$127,500 LINN CNTY 4.0436 ESD WILL 0.2967 LBCC 0.6915 JEFFRSN SD 4.8468 JEFFRSN PARK 0.2914 LINN S/WTR 0.0000 4H EXT 0.0520 Total 10.2220	<b>CODE 14019</b> Value \$9,807,651 LINN CNTY 4.0436 ESD WILL 0.2967 LBCC 0.6915 JEFFRSN SD 4.8468 JEFFRSN RFD 1.1955 JEFFRSN PARK 0.2914 DEV/CON WTR 0.1614 LINN S/WTR 0.0000 4H EXT 0.0520 Total 11.5789	<b>CODE 50904</b> Value \$599,959 LINN CNTY 4.0436 ESD LBL 0.3049 LBCC 0.6915 CORVLS SD 5.9614 CORVLS SD BNDS 1.6536 TANGENT RFD 2.5739 LINN S/WTR 0.0000 4H EXT 0.0520 Total 15.2809	<b>CODE 55204</b> Value \$126,216,504 LINN CNTY 4.0436 ESD LBL 0.3049 LBCC 0.6915 C LINN SD 4.6179 HLY/SHD RFD 0.9894 LINN S/WTR 0.0000 4H EXT 0.0520 Total 10.6993	<b>CODE 55209</b> Value \$336,960 LINN CNTY 4.0436 ESD LBL 0.3049 LBCC 0.6915 C LINN SD 4.6179 LINN S/WTR 0.0000 4H EXT 0.0520 Total 9.7099	<b>CODE 55219</b> <b>BROWNSVILLE</b> Value \$86,588,858 LINN CNTY 4.0436 ESD LBL 0.3049 LBCC 0.6915 C LINN SD 4.6179 BRNSVL CTY 10.7206 BRNSVL RFD 2.2252 LINN S/WTR 0.0000 4H EXT 0.0520 Total 22.6557
				<b>CODE 55210</b> Value \$18,794,607 LINN CNTY 4.0436 ESD LBL 0.3049 LBCC 0.6915 C LINN SD 4.6179 HLY/SHD RFD 0.9894 LINN S/WTR 0.0000 4H EXT 0.0520 Total 10.6993	<b>CODE 55220</b> Value \$167,892,140 LINN CNTY 4.0436 ESD LBL 0.3049 LBCC 0.6915 C LINN SD 4.6179 HLY/SHD RFD 0.9894 LINN S/WTR 0.0000 4H EXT 0.0520 Total 10.6993

Tax rates are shown in dollars per thousand of taxable value. Rates are before Measure 5 compression.

~ District Abbreviations ~

4H EXT	4H Extension Dist	HARSBG SD	Harrisburg School	MILRSBG CTY	Millersburg City
ALBANY CTY	Albany City	HARSBG UR	Harrisburg Redevelop	MOHAWK RFD	Mohawk Valley Rurl Fire
ALBANY RFD	Albany Rural Fire	HLY/SHD RFD	Halsey/Shed Rural Fire	MONROE RFD	Monroe Rural Fire
ALBANY SD	Albany School	IDANHA CTY	Idanha City	MONROE SD	Monroe School
ALBANY UR	Central Albany Revit	IDANHA RFD	Idanha Rural Fire	N LEB WTR	North Lebanon Water
BENTON LIB	Benton Co Library	JEFFRSN PARK	Jefferson Park Rec	N SANT SD	North Santiam School
BRNSVL CTY	Brownsville City	JEFFRSN RFD	Jefferson Rural Fire	OAKVL CNTR	Oak Creek Comm Cntr
BRNSVL RFD	Brownsville Rural Fire	JEFFRSN SD	Jefferson School	S SANT WTR	South Santiam Water
C LINN SD	Central Linn School	LANE CC	Lane CC	SANT CAN SD	Santiam Canyon School
CHEM CC	Chemeketa CC	LBCC	Linn Benton CC	SANT WTR	Santiam Water
CHEM LIB	Chemeketa Library	LEB AQUA CNTR	Lebanon Aquatic Center	SCIO CTY	Scio City
CORVLS RFD	Corvallis Rural Fire	LEBANON UR	Lebanon Urban Renewal	SCIO RFD	Scio Rural Fire
CORVLS SD	Corvallis School	LEBANON CTY	Lebanon City	SCIO SD	Scio School
DEV/CON WTR	Dever Conner Water	LEBANON RFD	Lebanon Rural Fire	SODAVLE CTY	Sodaville City
ESD LANE	Lane ESD	LEBANON SD	Lebanon School	STAYTON RFD	Stayton Rural Fire
ESD LBL	LinnBtnLinc ESD	LINN CNTY	Linn County	SW HM AM	Sweet Home Ambulance
ESD WILL	Willamette Regional ESD	LINN S/WTR	Linn Soil & Water Consvr	SW HM CEM	Sweet Home Cemetary
EUGENE SD	Eugene School	LY/MEH WTR	Lyons/Mehama Water	SW HM CTY	Sweet Home City
GATES CTY	Gates City	LYONS CTY	Lyons City	SW HM FIRE/AM	Sweet Home Fire & Ambul
GATES RFD	Gates Rural Fire	LYONS RFD	Lyons Rural Fire	SW HM SD	Sweet Home School
HALSEY CTY	Halsey City	MARCOLA SD	Marcola School	TANGENT CTY	Tangent City
HARSBG CTY	Harrisburg City	MILL CTY	Mill City	TANGENT RFD	Tangent Rural Fire Dist.
HARSBG RFD	Harrisburg Rural Fire	MILL CTY RFD	Mill City Rural Fire	WTRLOO CTY	Waterloo City

This summary is designed to provide information about the current Assessment and Tax Roll. More detailed or specific information is available from our office, located in room 214 of the County Courthouse at 300 4th Ave SW in Albany.

If you have questions concerning property you own or more general questions about the property tax system, you are welcome to discuss your situation with a member of our staff. If you are eligible for a program to help reduce your property taxes, we will gladly help in any way we can.

Ad valorem taxes are based on the assessed value of your property as of January 1st. Those taxes provide funds for the operation of schools, cities, fire districts, and other miscellaneous taxing districts.

The Assessor does not tax, but values your property through methods prescribed by state law and regulation. The Assessor does not determine the amount of money your taxing district receives. To control spending, you should take an active interest in local budget meetings and elections. You are, in effect, purchasing services with your tax dollars.

Taxes are due and payable in three installments. The first third is due on November 15th, the second third on February 18th, and the final third on May 15th. A three percent discount will be allowed on taxes paid in full on or before November 15th. A two percent discount will be allowed if two-thirds of the total taxes are paid on or before November 15th. No discount will be allowed on taxes paid after November 15th. Interest at a rate of 1-1/3% per month or fraction of a month will be charged on any payment made after the installment due date.

By law this office must credit your property tax payments to the earliest year for which taxes are due on your property. In order to receive a discount on your current year's bill, all prior year's taxes, penalties and interest must first be fully paid.

I, David Swartzlender, Linn County Assessor/Tax Collector, State of Oregon, do hereby certify that the assessed valuations, tax levies and taxes set forth herein contained, are true and correct copies of the originals, as the same appears on file in my office and custody.

**David Swartzlender**

Linn County Assessor / Tax Collector

Location:  
Linn county Courthouse, Room 214

Phone: (541) 967-3808

Web Site:  
[www.co.linn.or.us](http://www.co.linn.or.us)

Mailing Address:  
Linn County Assessment and Taxation  
PO Box 100  
Albany OR 97321