

●●●● **2000-2001** ●●●●

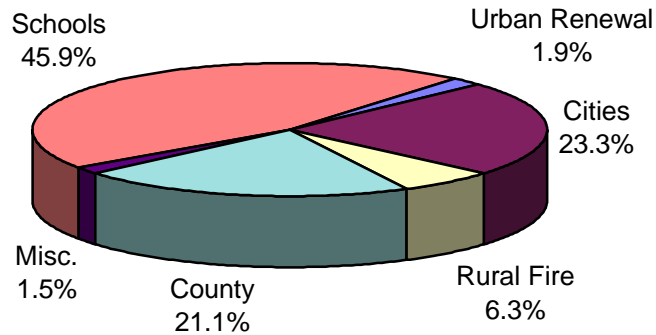
**SUMMARY OF ASSESSMENT AND TAX ROLL - LINN COUNTY, OREGON**

**VALUATION for Tax Year beginning July 1, 2000**

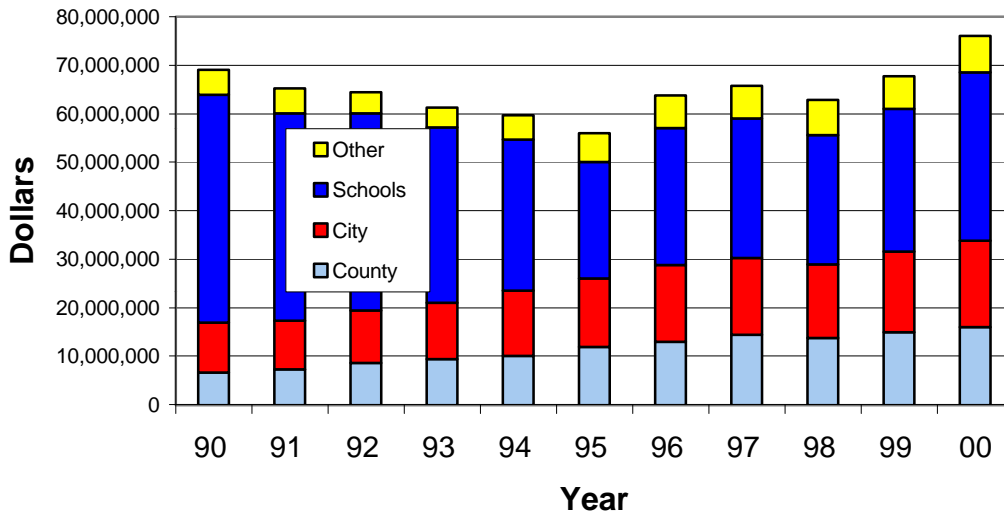
	Measure 5 Value	Assessed Value	Veteran's Exemption	Taxable Value
Real Property	5,779,441,000	4,518,325,318	10,290,104	4,508,035,214
Manufactured Structures	163,553,221	133,225,495	1,452,209	131,773,286
Personal Property	197,162,349	194,711,082		194,711,082
Public Utilities	311,321,827	252,779,743		252,779,743
<b>Total</b>	<b>6,451,478,397</b>	<b>5,099,041,638</b>	<b>11,742,313</b>	<b>5,087,299,325</b>

Measure 5 Value (M5V) is the Real Market Value (RMV) adjusted for special assessments.  
 Assessed Value (AV) is the lesser of M5V and the Measure 50 Maximum Assessed Value (MAV).  
 Taxable Value is Assessed Value less Veteran's Exemption.

**DISTRIBUTION of TAX**



**TAX DOLLARS by YEAR**



Schools includes Community Colleges and Education Service Districts.

**ASSESSMENT & TAXES by DISTRICT**

	MEASURE 5 VALUE	TAXABLE VALUE	LESS URBAN RENEWAL	TOTAL VALUE TO COMPUTE TAX RATES	NOMINAL RATES	TAXES IMPOSED
<b>COUNTY</b>	6,451,478,397	5,087,299,325	56,047,577	5,031,251,748	3.2027	16,030,068.18
<b>CITIES</b>						
Albany	1,997,950,898	1,614,022,242	0	1,614,022,242	7.3557	11,872,242.08
Brnsvl	67,126,929	45,875,603	0	45,875,603	7.9867	366,389.83
Brnsvl Cty Bd	0	0	0	0	0.0000	0.00
Gates	3,356,850	2,473,821	0	2,473,821	0.6632	1,640.60
Halsey	32,821,144	23,775,653	0	23,775,653	7.5192	178,772.08
Harrisbrg	118,317,628	87,253,996	7,952,515	79,301,481	4.1668	330,433.79
Idanha	2,849,160	2,219,570	0	2,219,570	2.5029	5,555.29
Lebanon	608,875,535	482,469,383	46,721,573	435,747,810	5.9900	2,610,125.97
Leb Cty Bd	116,560	90,038	0	90,038	0.0000	0.00
Lyons	47,590,092	38,291,101	0	38,291,101	1.8590	71,183.26
Mill City	49,904,970	36,749,539	0	36,749,539	4.1578	152,797.20
Millrsbrg	305,460,808	277,162,008	0	277,162,008	0.0000	0.00
Scio	27,649,574	21,487,376	0	21,487,376	4.9057	105,410.66
Sodaville	12,190,842	8,670,455	0	8,670,455	0.4552	3,946.77
Swt Home	333,429,638	237,410,329	0	237,410,329	8.7132	2,017,912.61
Tangent	99,899,373	76,277,084	0	76,277,084	0.0000	0.00
Waterloo	7,955,411	5,831,416	0	5,831,416	0.0000	0.00
<b>TOTAL</b>	<b>3,715,495,412</b>	<b>2,960,059,614</b>	<b>54,674,088</b>	<b>2,905,385,526</b>		<b>17,716,410.14</b>
<b>RURAL FIRE PROTECTION DISTRICTS</b>						
Albany	491,474,263	427,148,638	0	427,148,638	1.3371	571,139.61
Brnsvl	182,968,537	129,882,124	0	129,882,124	1.0658	138,427.35
Corvls	118,804,677	90,480,101	0	90,480,101	2.1140	191,274.91
Gates	18,729,290	13,916,330	0	13,916,330	2.3000	32,007.48
Hly/Shd	374,613,839	316,921,519	0	316,921,519	0.9022	285,916.23
Harrisbrg	249,364,524	184,172,812	7,952,515	176,220,297	0.9779	172,324.34
Idanha	3,348,194	2,643,040	0	2,643,040	1.6592	4,385.36
Jefrson	189,470,193	148,809,666	0	148,809,666	1.1955	177,901.75
Lebanon	1,248,422,400	962,317,733	48,095,062	914,222,671	2.2600	2,066,138.48
Lyons	124,702,932	101,138,098	0	101,138,098	2.6373	266,731.56
Mill City	71,589,410	53,591,826	0	53,591,826	1.3048	69,926.55
Scio	256,318,988	199,884,335	0	199,884,335	1.2745	254,751.98
Stayton	71,089,469	56,909,626	0	56,909,626	1.4601	83,093.76
Swt Home	216,364,760	157,935,520	0	157,935,520	0.4012	63,363.22
Mohawk	89,630	72,403	0	72,403	2.8308	204.96
Tangent	197,905,977	156,687,058	0	156,687,058	2.5739	403,296.21
<b>TOTAL</b>	<b>3,815,257,083</b>	<b>3,002,510,829</b>	<b>56,047,577</b>	<b>2,946,463,252</b>		<b>4,780,883.75</b>
<b>SCHOOL DISTRICTS</b>						
SD 4J	9,769,300	6,676,207	0	6,676,207	7.3674	48,400.83
SD 7J	250,156,879	185,022,842	7,952,515	177,070,327	7.2107	1,262,184.01
Wyatt Bnds	17,722,474	14,131,849	0	14,131,849	1.3267	18,748.70
SD 8J	2,907,552,631	2,372,040,884	0	2,372,040,884	5.4986	12,838,100.87
SD 9	1,349,487,855	1,039,712,334	48,095,062	991,617,272	8.0178	7,816,715.93
Hm Cr Bnds	113,160,790	81,125,610	0	81,125,610	0.6711	54,443.41
SD 14J	24,491,464	19,670,270	0	19,670,270	6.1412	117,441.99
SD 27J	186,661,938	151,019,089	0	151,019,089	5.8858	881,948.92
SD 55	725,313,606	527,014,818	0	527,014,818	5.0057	2,571,621.44
SD 79J	54,090	42,955	0	42,955	6.2692	269.29
SD 95	203,650,070	160,487,948	0	160,487,948	4.5080	717,662.71
Scio Bnds	193,970,345	152,330,219	0	152,330,219	1.5361	233,994.72
SD 127J	137,638,332	103,075,639	0	103,075,639	4.8880	491,631.65
SD 509J	112,698,073	84,823,939	0	84,823,939	5.2896	417,973.79
SD 509J Bnds	112,698,073	84,823,939	0	84,823,939	0.0651	5,522.12
552 Ctrl Ln	544,004,159	437,712,400	0	437,712,400	5.3245	2,283,316.81
<b>TOTAL</b>	<b>6,889,030,079</b>	<b>5,419,710,942</b>	<b>56,047,577</b>	<b>5,278,839,426</b>		<b>29,759,977.19</b>

**LINN COUNTY TAX SUMMARY**

**2000-2001**

	MEASURE 5 VALUE	TAXABLE VALUE	LESS URBAN RENEWAL	TOTAL VALUE TO COMPUTE TAX RATES	NOMINAL RATES	TAXES IMPOSED
<b>EDUCATIONAL SERVICE DISTRICTS</b>						
LBL	6,230,501,605	4,909,890,804	56,047,577	4,853,843,227	0.3049	1,448,599.32
Wil Reg	211,153,402	170,689,359	0	170,689,359	0.2788	46,956.69
Lane	9,823,390	6,719,162	0	6,719,162	0.2232	1,499.30
<b>TOTAL</b>	<b>6,451,478,397</b>	<b>5,087,299,325</b>	<b>56,047,577</b>	<b>5,031,251,748</b>		<b>1,497,055.31</b>
<b>COMMUNITY COLLEGES</b>						
Lane CC	259,980,269	191,742,004	7,952,515	183,789,489	0.8739	158,647.12
LBCC	5,940,163,992	4,699,712,188	48,095,062	4,651,617,126	0.7059	3,234,368.60
Chemeketa	251,334,136	195,845,133	0	195,845,133	0.7557	145,609.46
Chem Lib	251,334,136	195,845,133	0	195,845,133	0.0818	16,020.30
<b>TOTAL</b>	<b>6,702,812,533</b>	<b>5,283,144,458</b>	<b>56,047,577</b>	<b>5,227,096,881</b>		<b>3,554,645.48</b>
<b>MISCELLANEOUS DISTRICTS</b>						
Sw Hm Amb	728,941,038	530,080,623	0	530,080,623	0.3882	205,775.94
Jef Pk Rec	24,677,354	19,844,037	0	19,844,037	0.2914	5,782.46
Sw Hm Cem	521,885,643	372,036,907	0	372,036,907	0.2166	80,583.02
Dev/Con Wtr	16,397,948	13,473,708	0	13,473,708	2.2522	30,344.57
Ly/Meh Wtr	91,974,953	59,577,438	0	59,577,438	1.4253	84,915.84
N Leb Wtr	64,040,509	50,894,377	0	50,894,377	0.1347	6,855.37
S Sant Wtr	10,188,702	8,188,122	0	8,188,122	1.0044	8,223.98

**SPECIAL ASSESSMENTS**

Forest Patrol	73,231.26
Forest Patrol Surcharge	0.00
Little Muddy Creek Water Control	6,294.16
Fertile District Imp Co	1,968.59
Grand Prairie Water Control Sub I	8,295.13
Grand Prairie Water Control Sub II	145,046.65
Mobile Home Ombudsman Fee	30,728.33
Clerical Errors (Prior Years)	47,637.48
Calapooia Irigation	3,459.26
Delinquent Assessments:	
Albany Sewer	281,565.86
Lebanon Sewer	5,480.39
Millersburg Sewer	1,754.38
Sweet Home Sewer	6,482.52
Tangent Sewer	2,562.80
Additional Historical Tax	354.84
Additional Farmland Tax	75,913.06
Additional Forestland Tax	8,045.95
Additional Small Tract	2,226.90
<b>TOTAL</b>	<b>701,047.56</b>
<b>URBAN RENEWAL</b>	<b>1,460,209.50</b>
<b>LATE FILING PENALTIES</b>	<b>47,966.04</b>

**TOTAL IMPOSED AD VALOREM TAXES AND ASSESSMENTS** 75,970,744.33

**IMPOSED AD VALOREM TAX BY PROPERTY TYPE**

REAL PROPERTY	67,789,016.58
PERSONAL PROPERTY	2,847,938.86
MANUFACTURED STRUCTURES	1,973,479.36
UTILITIES	3,360,309.53
<b>TOTAL</b>	<b>75,970,744.33</b>

**LINN COUNTY TAX SUMMARY**

**2000-2001**

Code 7-1	Code 7-8	Code 8-3	Code 8-10	Code 8-18	Code 8-24
<b>HARRISBURG</b>	Value \$11,553,780	Value \$3,451,807	Value \$6,464,057	Value \$1,416,583	Value \$3,871,189
Value \$75,700,216	LINN CNTY	LINN CNTY	LINN CNTY	LINN CNTY	LINN CNTY
LINN CNTY	ESD LBL	ESD LBL	ESD LBL	ESD LBL	ESD LBL
ESD LBL	SD #7	SD #8J	SD #8J	SD #8J	SD #8J
SD #7	HARRSBG CTY	LINN S/WTR	JEFFSN R/F	ALBANY R/F	JEFFSN R/F
HARRSBG CTY	HARRSBG R/F	LBCC	DEV/CON WTR	S SANT WTR	S SANT WTR
HARRSBG R/F	LINN S/WTR	Total	LINN S/WTR	LINN S/WTR	LINN S/WTR
LINN S/WTR	LANE CM COL	Code 8-4	LBCC	LBCC	LBCC
LANE CM COL	HRSBRG SP UR	Value \$34,276,857	Total	Total	Total
HRSBRG SP UR	Total	LINN CNTY	Code 8-11	Code 8-19	Code 8-25
Total	Code 7-9	ESD LBL	<b>TANGENT</b>	Value \$281,468	Value \$3,654,159
Code 7-2	Value \$14,089,553	SD #8J	Value \$75,928,130	LINN CNTY	LINN CNTY
Value \$49,701,024	LINN CNTY	ALBANY R/F	LINN CNTY	ESD LBL	ESD LBL
LINN CNTY	ESD LBL	GP WTR	ESD LBL	SD #8J	SD #8J
ESD LBL	SD #7	LINN S/WTR	SD #8J	SCIO R/F	JEFFSN R/F
SD #7	WYATT BNDS	LBCC	TANGENT CTY	S SANT WTR	GP WTR
HARRSBG R/F	HARRSBG R/F	Total	TANGENT R/F	LINN S/WTR	LINN S/WTR
LINN S/WTR	LINN S/WTR	Code 8-5	LINN S/WTR	LBCC	LBCC
LANE CM COL	LANE CM COL	<b>MILLERSBURG</b>	LBCC	Total	Total
Total	Total	Value \$224,692,941	Total	Code 8-20	Code 8-26
Code 7-3	Code 7-10	LINN CNTY	Code 8-13	Value \$1,671,453	Value \$59,888,527
Value \$637,420	Value \$42,296	ESD LBL	Value \$348,954	LINN CNTY	LINN CNTY
LINN CNTY	LINN CNTY	SD #8J	LINN CNTY	ESD LBL	ESD LBL
ESD LBL	ESD LBL	MILRSBG CTY	ESD LBL	SD #8J	SD #8J
SD #7	SD #7	ALBANY R/F	SD #8J	SCIO R/F	ALBANY R/F
BRNSVL R/F	WYATT BNDS	LINN S/WTR	TANGENT CTY	N LEB WTR	GP WTR #2
LINN S/WTR	HARRSBG R/F	LBCC	LINN S/WTR	LINN S/WTR	LINN S/WTR
LANE CM COL	LTL MUD WTR	Total	LBCC	LBCC	LBCC
Total	LINN S/WTR	Code 8-6	Total	Total	Total
Code 7-4	Total	Value \$1,532,648	Code 8-14	Code 8-21	Code 8-27
Value \$661,348	Code 7-11	LINN CNTY	Value \$1,806,852	Value \$6,174,232	Value \$85,436,562
LINN CNTY	Value \$1,201	ESD LBL	LINN CNTY	LINN CNTY	LINN CNTY
ESD LBL	SD #8J	SD #8J	ESD LBL	ESD LBL	ESD LBL
SD #7	LINN CNTY	MILRSBG CTY	SD #8J	SD #8J	SD #8J
HLY/SHD R/F	ESD LBL	LINN S/WTR	HLY/SHD R/F	ALBANY R/F	ALBANY CTY
LINN S/WTR	SD #7	LBCC	LINN S/WTR	N LEB WTR	GP WTR
LANE CM COL	HARRSBG R/F	Total	LBCC	LINN S/WTR	LINN S/WTR
Total	LINN S/WTR	Code 8-7	Total	LBCC	LBCC
Code 7-5	LANE CM COL	Value \$50,568,262	Code 8-15	Total	Total
Value \$9,568,377	HRSBRG SP UR	LINN CNTY	Value \$410,219	Code 8-22	Code 8-28
LINN CNTY	Total	ESD LBL	LINN CNTY	Value \$42,140	Value \$1,394,073
ESD LBL	Code 8-1	SD #8J	ESD LBL	LINN CNTY	LINN CNTY
SD #7	<b>ALBANY</b>	MILRSBG CTY	SD #8J	ESD LBL	ESD LBL
LINN S/WTR	Value \$1,500,681,117	JEFFSN R/F	LEBANON R/F	SD #8J	SD #8J
LANE CM COL	LINN CNTY	LINN S/WTR	LINN S/WTR	N LEB WTR	TANGENT R/F
Total	ESD LBL	LBCC	LBCC	LINN S/WTR	GP WTR #2
Code 7-6	SD #8J	Total	Total	LBCC	LINN S/WTR
Value \$396,968	ALBANY CTY	Code 8-8	Code 8-16	Total	LBCC
LINN CNTY	LINN S/WTR	Value \$68,675,175	Value \$9,817,690	Code 8-23	Total
ESD LBL	LBCC	LINN CNTY	LINN CNTY	Value \$2,025,652	Code 8-29
SD #7	Total	ESD LBL	ESD LBL	LINN CNTY	Value \$4,819,575
LTL MUD WTR	Code 8-2	SD #8J	SD #8J	ESD LBL	LINN CNTY
LINN S/WTR	Value \$91,180,351	TANGENT R/F	CORVLS R/F	SD #8J	ESD LBL
LANE CM COL	LINN CNTY	LINN S/WTR	LINN S/WTR	LEBANON R/F	SD #8J
Total	ESD LBL	LBCC	LBCC	N LEB WTR	TANGENT R/F
Code 7-7	SD #8J	Total	Total	LINN S/WTR	GP WTR
Value \$22,670,659	ALBANY R/F	Code 8-9	Code 8-17	LBCC	LINN S/WTR
LINN CNTY	LINN S/WTR	Value \$67,345,992	Value \$14,550,495	Total	LBCC
ESD LBL	LBCC	LINN CNTY	LINN CNTY	Code 8-24	Total
SD #7	Total	ESD LBL	ESD LBL	Value \$3,871,189	Value \$3,871,189
HARRSBG R/F	ALBANY R/F	SD #8J	SD #8J	LINN CNTY	LINN CNTY
LTL MUD WTR	LINN S/WTR	JEFFSN R/F	SCIO R/F	ESD LBL	ESD LBL
LINN S/WTR	LBCC	LINN S/WTR	LINN S/WTR	SD #8J	SD #8J
LANE CM COL	Total	LBCC	LBCC	TANGENT R/F	TANGENT R/F
Total	Code 8-10	Total	Total	GP WTR	GP WTR
Code 7-1	Value \$11,553,780	Code 8-3	Value \$6,464,057	Code 8-18	Value \$3,871,189
Value \$75,700,216	LINN CNTY	LINN CNTY	LINN CNTY	LINN CNTY	LINN CNTY
LINN CNTY	ESD LBL	ESD LBL	ESD LBL	ESD LBL	ESD LBL
ESD LBL	SD #7	SD #8J	SD #8J	SD #8J	SD #8J
SD #7	HARRSBG CTY	LINN S/WTR	JEFFSN R/F	ALBANY R/F	JEFFSN R/F
HARRSBG CTY	HARRSBG R/F	LBCC	DEV/CON WTR	S SANT WTR	S SANT WTR
HARRSBG R/F	LINN S/WTR	Total	LINN S/WTR	LINN S/WTR	LINN S/WTR
LINN S/WTR	LANE CM COL	Code 8-4	LBCC	LBCC	LBCC
LANE CM COL	HRSBRG SP UR	Value \$34,276,857	Total	Total	Total
HRSBRG SP UR	Total	LINN CNTY	Code 8-11	Code 8-19	Code 8-25
Total	Code 7-9	ESD LBL	<b>TANGENT</b>	Value \$281,468	Value \$3,654,159
Code 7-2	Value \$14,089,553	SD #8J	Value \$75,928,130	LINN CNTY	LINN CNTY
Value \$49,701,024	LINN CNTY	ALBANY R/F	LINN CNTY	ESD LBL	ESD LBL
LINN CNTY	ESD LBL	GP WTR	ESD LBL	SD #8J	SD #8J
ESD LBL	SD #7	LINN S/WTR	SD #8J	SCIO R/F	JEFFSN R/F
SD #7	WYATT BNDS	LBCC	TANGENT CTY	S SANT WTR	GP WTR
HARRSBG R/F	HARRSBG R/F	Total	TANGENT R/F	LINN S/WTR	LINN S/WTR
LINN S/WTR	LINN S/WTR	Code 8-5	LINN S/WTR	LBCC	LBCC
LANE CM COL	LANE CM COL	<b>MILLERSBURG</b>	LBCC	Total	Total
Total	Total	Value \$224,692,941	Total	Code 8-20	Code 8-26
Code 7-3	Code 7-10	LINN CNTY	Code 8-13	Value \$1,671,453	Value \$59,888,527
Value \$637,420	Value \$42,296	ESD LBL	Value \$348,954	LINN CNTY	LINN CNTY
LINN CNTY	LINN CNTY	SD #8J	LINN CNTY	ESD LBL	ESD LBL
ESD LBL	ESD LBL	MILRSBG CTY	ESD LBL	SD #8J	SD #8J
SD #7	SD #7	ALBANY R/F	SD #8J	SCIO R/F	ALBANY R/F
BRNSVL R/F	WYATT BNDS	LINN S/WTR	TANGENT CTY	N LEB WTR	GP WTR #2
LINN S/WTR	HARRSBG R/F	LBCC	LINN S/WTR	LINN S/WTR	LINN S/WTR
LANE CM COL	LTL MUD WTR	Total	LBCC	LBCC	LBCC
Total	LINN S/WTR	Code 8-6	Total	Total	Total
Code 7-4	Total	Value \$1,532,648	Code 8-14	Code 8-21	Code 8-27
Value \$661,348	Code 7-11	LINN CNTY	Value \$1,806,852	Value \$6,174,232	Value \$85,436,562
LINN CNTY	Value \$1,201	ESD LBL	LINN CNTY	LINN CNTY	LINN CNTY
ESD LBL	SD #8J	SD #8J	ESD LBL	ESD LBL	ESD LBL
SD #7	LINN CNTY	MILRSBG CTY	SD #8J	SD #8J	SD #8J
HLY/SHD R/F	ESD LBL	LINN S/WTR	HLY/SHD R/F	ALBANY R/F	ALBANY CTY
LINN S/WTR	SD #7	LBCC	LINN S/WTR	N LEB WTR	GP WTR
LANE CM COL	HARRSBG R/F	Total	LBCC	LINN S/WTR	LINN S/WTR
Total	LINN S/WTR	Code 8-7	Total	LBCC	LBCC
Code 7-5	LANE CM COL	Value \$50,568,262	Code 8-15	Total	Total
Value \$9,568,377	HRSBRG SP UR	LINN CNTY	Value \$410,219	Code 8-22	Code 8-28
LINN CNTY	Total	ESD LBL	LINN CNTY	Value \$42,140	Value \$1,394,073
ESD LBL	Code 8-1	SD #8J	ESD LBL	LINN CNTY	LINN CNTY
SD #7	<b>ALBANY</b>	MILRSBG CTY	SD #8J	ESD LBL	ESD LBL
LINN S/WTR	Value \$1,500,681,117	JEFFSN R/F	LEBANON R/F	SD #8J	SD #8J
LANE CM COL	LINN CNTY	LINN S/WTR	LINN S/WTR	N LEB WTR	TANGENT R/F
Total	ESD LBL	LBCC	LBCC	LINN S/WTR	GP WTR #2
Code 7-6	SD #8J	Total	Total	LBCC	LINN S/WTR
Value \$396,968	ALBANY CTY	Code 8-8	Code 8-16	Total	LBCC
LINN CNTY	LINN S/WTR	Value \$68,675,175	Value \$9,817,690	Code 8-23	Total
ESD LBL	LBCC	LINN CNTY	LINN CNTY	Value \$2,025,652	Code 8-29
SD #7	Total	ESD LBL	ESD LBL	LINN CNTY	Value \$4,819,575
LTL MUD WTR	Code 8-2	SD #8J	SD #8J	ESD LBL	LINN CNTY
LINN S/WTR	Value \$91,180,351	TANGENT R/F	CORVLS R/F	SD #8J	ESD LBL
LANE CM COL	LINN CNTY	LINN S/WTR	LINN S/WTR	LEBANON R/F	SD #8J
Total	ESD LBL	LBCC	LBCC	N LEB WTR	TANGENT R/F
Code 7-7	SD #8J	Total	Total	LINN S/WTR	GP WTR
Value \$22,670,659	ALBANY R/F	Code 8-9	Code 8-17	LBCC	LINN S/WTR
LINN CNTY	LINN S/WTR	Value \$67,345,992	Value \$14,550,495	Total	LBCC
ESD LBL	LBCC	LINN CNTY	LINN CNTY	Code 8-24	Total
SD #7	Total	ESD LBL	ESD LBL	Value \$3,871,189	Value \$3,871,189
HARRSBG R/F	ALBANY R/F	SD #8J	SD #8J	LINN CNTY	LINN CNTY
LTL MUD WTR	LINN S/WTR	JEFFSN R/F	SCIO R/F	ESD LBL	ESD LBL
LINN S/WTR	LBCC	LINN S/WTR	LINN S/WTR	SD #8J	SD #8J
LANE CM COL	Total	LBCC	LBCC	TANGENT R/F	TANGENT R/F
Total	Code 8-10	Total	Total	GP WTR	GP WTR
Code 7-1	Value \$11,553,780	Code 8-3	Value \$6,464,057	Code 8-18	Value \$3,871,189
Value \$75,700,216	LINN CNTY	LINN CNTY	LINN CNTY	LINN CNTY	LINN CNTY
LINN CNTY	ESD LBL	ESD LBL	ESD LBL	ESD LBL	ESD LBL
ESD LBL	SD #7	SD #8J	SD #8J	SD #8J	SD #8J
SD #7	HARRSBG CTY	LINN S/WTR	JEFFSN R/F	ALBANY R/F	JEFFSN R/F
HARRSBG CTY	HARRSBG R/F	LBCC	DEV/CON WTR	S SANT WTR	S SANT WTR
HARRSBG R/F	LINN S/WTR	Total	LINN S/WTR	LINN S/WTR	LINN S/WTR
LINN S/WTR	LANE CM COL	Code 8-4	LBCC	LBCC	LBCC
LANE CM COL	HRSBRG SP UR	Value \$34,276,857	Total	Total	Total
HRSBRG SP UR	Total	LINN CNTY	Code 8-11	Code 8-19	Code 8-25
Total	Code 7-9	ESD LBL	<b>TANGENT</b>	Value \$281,468	Value \$3,654,159
Code 7-2	Value \$14,089,553	SD #8J	Value \$75,928,130	LINN CNTY	LINN CNTY
Value \$49,701,024	LINN CNTY	ALBANY R/F	LINN CNTY	ESD LBL	ESD LBL
LINN CNTY	ESD LBL	GP WTR	ESD LBL	SD #8J	SD #8J
ESD LBL	SD #7	LINN S/WTR	SD #8J	SCIO R/F	JEFFSN R/F
SD #7	WYATT BNDS	LBCC	TANGENT CTY	S SANT WTR	GP WTR
HARRSBG R/F	HARRSBG R/F	Total	TANGENT R/F	LINN S/WTR	LINN S/WTR
LINN S/WTR	LINN S/WTR	Code 8-5	LINN S/WTR	LBCC	LBCC
LANE CM COL	LANE CM COL	<b>MILLERSBURG</b>	LBCC	Total	Total
Total	Total	Value \$224,692,941	Total	Code 8-20	Code 8-26
Code 7-3	Code 7-10	LINN CNTY	Code 8-13	Value \$1,671,453	Value \$59,888,527
Value \$637,420	Value \$42,296	ESD LBL	Value \$348,954	LINN CNTY	LINN CNTY
LINN CNTY	LINN CNTY	SD #8J	LINN CNTY	ESD LBL	ESD LBL
ESD LBL	ESD LBL	MILRSBG CTY	ESD LBL	SD #8J	SD #8J
SD #7	SD #7	ALBANY R/F	SD #8J	SCIO R/F	ALBANY R/F
BRNSVL R/F	WYATT BNDS	LINN S/WTR	TANGENT CTY	N LEB WTR	GP WTR #2
LINN S/WTR	HARRSBG R/F	LBCC	LINN S/WTR	LINN S/WTR	LINN S/WTR
LANE CM COL	LTL MUD WTR	Total	LBCC	LBCC	LBCC
Total	LINN S/WTR	Code 8-6	Total	Total	Total
Code 7-4	Total	Value \$1,532,648	Code 8-14	Code 8-21	Code 8-27
Value \$661,348	Code 7-11	LINN CNTY	Value \$1,806,852	Value \$6,174,232	Value \$85,436,562
LINN CNTY	Value \$1,201	ESD LBL	LINN CNTY	LINN CNTY	LINN CNTY
ESD LBL	SD #8J	SD #8J	ESD LBL	ESD LBL	ESD LBL
SD #7	LINN CNTY	MILRSBG CTY	SD #8J	SD #8J	SD #8J
HLY/SHD R/F	ESD LBL	LINN S/WTR	HLY/SHD R/F	ALBANY R/F	ALBANY CTY
LINN S/WTR	SD #7	LBCC	LINN S/WTR	N LEB WTR	GP WTR
LANE CM COL	HARRSBG R/F	Total	LBCC	LINN S/WTR	LINN S/WTR
Total	LINN S/WTR	Code 8-7	Total	LBCC	LBCC
Code 7-5	LANE CM COL	Value \$50,568,262	Code 8-15	Total	Total
Value \$9,568,377	HRSBRG SP UR	LINN CNTY	Value \$410,219	Code 8-22	Code 8-28
LINN CNTY	Total	ESD LBL	LINN CNTY	Value \$42,140	Value \$1,394,073
ESD LBL	Code 8-1	SD #8J	ESD LBL	LINN CNTY	LINN CNTY
SD #7	<b>ALBANY</b>	MILRSBG CTY	SD #8J	ESD LBL	ESD LBL
LINN S/WTR	Value \$1,500,681,117	JEFFSN R/F	LEBANON R/F	SD #8J	SD #8J
LANE CM COL	LINN CNTY	LINN S/WTR	LINN S/WTR	N LEB WTR	TANGENT R/F
Total	ESD LBL	LBCC	LBCC	LINN S/WTR	GP WTR #2
Code 7-6	SD #8J	Total	Total	LBCC	LINN S/WTR



**LINN COUNTY TAX SUMMARY**

**2000-2001**

Code 9-27	Code 9-33	Code 9-39	Code 9-45	Code 9-51	Code 9-57
Value \$937,186	Value \$16,616,134	Value \$1,217,571	Value \$2,160,158	Value \$9,588	<b>WATERLOO</b>
LINN CNTY	LINN CNTY	LINN CNTY	LINN CNTY	LINN CNTY	Value \$5,831,416
ESD LBL	ESD LBL	ESD LBL	ESD LBL	ESD LBL	LINN CNTY
SD #9	SD #9	SD #9	SD #9	SD #9	ESD LBL
LEBANON R/F	LEBANON R/F	HM CR BNDS	LBCC	LEBANON R/F	SD #9
GP WTR #2	GP WTR #2	SCIO R/F	Total	N LEB WTR	WTRLOO CTY
LINN S/WTR	LINN S/WTR	N LEB WTR		LBCC	LEBANON R/F
LBCC	LBCC	LINN S/WTR	Code 9-46	Total	LINN S/WTR
LEB SP UR I	Total	LBCC	Value \$13,432,359		LBCC
LEB SP UR II		Total	LINN CNTY	Code 9-52	Total
Total	15.2651	14.4913	ESD LBL	Value \$348	14.4913
	Code 9-34		SD #9	LINN CNTY	
	Value \$2,855,723	Code 9-40	LEBANON R/F	ESD LBL	Code 9-58
Code 9-28	LINN CNTY	Value \$58,318,945	LBCC	SD #9	Value \$3,381,243
Value \$3,960	ESD LBL	LINN CNTY	Total	LEBANON CTY	LINN CNTY
LINN CNTY	SD #9	ESD LBL		LEBANON R/F	ESD LBL
ESD LBL	HM CR BNDS	SD #9	Code 9-47	N LEB WTR	SD #9
SD #9	LEBANON R/F	HM CR BNDS	Value \$50,451,798	LBCC	LEBANON CTY
GP WTR #2	LINN S/WTR	LEBANON R/F	LINN CNTY	LEB SP UR I	LEBANON CTY
LINN S/WTR	LBCC	LBCC	ESD LBL	LEB SP UR II	LEBANON R/F
LBCC	Total	Total	SD #9	Total	LINN S/WTR
LEB SP UR I	Code 9-35	Code 9-41	LEBANON CTY		LBCC
LEB SP UR II	Value \$255,744	Value \$2,284,746	LEBANON R/F	Code 9-53	LEB SP UR I
Total	LINN CNTY	LINN CNTY	LINN S/WTR	Value \$1,209,600	LEB SP UR II
	ESD LBL	ESD LBL	LBCC	LINN CNTY	Total
	SD #9	SD #9	LEB SP UR I	ESD LBL	Code 9-59
Code 9-29	HM CR BNDS	HM CR BNDS	LEB SP UR II	SD #9	Value \$22,388
Value \$2,247,995	LEBANON R/F	LEBANON R/F	Total	LEBANON R/F	LINN CNTY
LINN CNTY	N LEB WTR	N LEB WTR		GP WTR #2	ESD LBL
ESD LBL	LINN S/WTR	LBCC	Code 9-48	LINN S/WTR	SD #9
SD #9	LBCC	Total	Value \$32,628,879	LBCC	LEBANON CTY
LEBANON CTY	Total	Code 9-42	LINN CNTY	LEB SP UR I	LEBANON CTY
LEBANON R/F	Code 9-36	Value \$7,607,330	ESD LBL	LEB SP UR II	LEBANON R/F
LINN S/WTR	Value \$220,684	LINN CNTY	SD #9	Total	LINN S/WTR
LBCC	LINN CNTY	ESD LBL	LEBANON R/F	Code 9-54	LEB SP UR I
LEB SP UR I	ESD LBL	SD #9	N LEB WTR	Value \$328,603	LEB SP UR II
LEB SP UR II	SD #9	HM CR BNDS	LINN S/WTR	LINN CNTY	Total
Total	HM CR BNDS	LBCC	LBCC	ESD LBL	Code 9-60
	SD #9	Total	Total	SD #9	Value \$301,168
	LINN S/WTR	Code 9-43	Code 9-49	LEBANON CTY	LINN CNTY
Code 9-30	LBCC	Value \$28,643	Value \$193,872	LEBANON R/F	ESD LBL
Value \$90,038	Total	LINN CNTY	LINN CNTY	LEBANON R/F	LINN CNTY
LINN CNTY	Code 9-37	ESD LBL	ESD LBL	SD #9	ESD LBL
ESD LBL	Value \$2,000	SD #9	SD #9	LEB SP UR I	SD #9
SD #9	LINN CNTY	HM CR BNDS	LEBANON CTY	LEB SP UR II	GP WTR
LEB BNDS	ESD LBL	LEBANON CTY	LEBANON R/F	Total	LINN S/WTR
LEBANON R/F	SD #9	LEBANON R/F	N LEB WTR		LBCC
LINN S/WTR	HM CR BNDS	LEBANON R/F	LINN S/WTR	Code 9-55	Total
LBCC	LEBANON CTY	N LEB WTR	LBCC	Value \$9,552	Code 9-61
Total	LEBANON R/F	LBCC	LEB SP UR I	LINN CNTY	Value \$122,222
	N LEB WTR	LEBANON R/F	LEB SP UR II	ESD LBL	LINN CNTY
	LINN S/WTR	LEBANON R/F	Total	SD #9	ESD LBL
	LBCC	Total		GP WTR #2	SD #9
	LEB SP UR I	Code 9-44	Code 9-50	LINN S/WTR	LINN S/WTR
	LEB SP UR II	Value \$10,128,824	Value \$4,387,358	LBCC	LBCC
	Total	LINN CNTY	LINN CNTY	Total	Total
	Code 9-38	ESD LBL	ESD LBL	LEB SP UR I	Code 9-62
Code 9-31	Value \$8,334,224	SD #9	SD #9	LEB SP UR II	Value \$1,123,827
Value \$549,583	LINN CNTY	SCIO R/F	GP WTR #2	Total	LINN CNTY
LINN CNTY	ESD LBL	LINN S/WTR	LINN S/WTR		ESD LBL
ESD LBL	SD #9	LINN S/WTR	LBCC	Code 9-56	SD #9
SD #9	HM CR BNDS	LBCC	Total	Value \$35,626	ALBANY R/F
LEBANON CTY	SCIO R/F	Total		LINN CNTY	LINN S/WTR
LEBANON R/F	LINN S/WTR	Code 9-45	Code 9-50	ESD LBL	LBCC
GP WTR #2	SD #9	Value \$10,128,824	Value \$4,387,358	SD #9	Total
LINN S/WTR	HM CR BNDS	LINN CNTY	LINN CNTY	GP WTR #2	Code 9-62
LBCC	LEBANON CTY	ESD LBL	ESD LBL	LINN S/WTR	Value \$1,123,827
LEB SP UR I	LEBANON R/F	SD #9	SD #9	LBCC	LINN CNTY
LEB SP UR II	N LEB WTR	GP WTR #2	GP WTR #2	Total	ESD LBL
Total	SCIO R/F	LINN S/WTR	LINN S/WTR		SD #9
	ESD LBL	LINN S/WTR	LBCC	Code 9-56	ESD LBL
	SD #9	LBCC	Total	Value \$35,626	SD #9
	HM CR BNDS	Total		LINN CNTY	TANGENT R/F
	SCIO R/F	Code 9-45	Code 9-50	ESD LBL	LINN S/WTR
	LINN S/WTR	Value \$10,128,824	Value \$4,387,358	SD #9	LBCC
	LBCC	LINN CNTY	LINN CNTY	GP WTR #2	Total
	HM CR BNDS	ESD LBL	ESD LBL	LINN S/WTR	Code 9-62
	SCIO R/F	SD #9	SD #9	LBCC	Value \$1,123,827
	LINN S/WTR	GP WTR #2	GP WTR #2	Total	LINN CNTY
	LBCC	LINN S/WTR	LINN S/WTR		ESD LBL
	Total	LBCC	Total	Code 9-56	SD #9
	Code 9-32	Total		Value \$35,626	ESD LBL
	Value \$2,666,528	Code 9-45	Code 9-50	LINN CNTY	SD #9
	LINN CNTY	Value \$10,128,824	Value \$4,387,358	ESD LBL	LINN S/WTR
	ESD LBL	LINN CNTY	LINN CNTY	SD #9	LBCC
	SD #9	ESD LBL	ESD LBL	LEBANON CTY	Total
	HM CR BNDS	SD #9	SD #9	LINN S/WTR	
	SCIO R/F	GP WTR #2	GP WTR #2	LBCC	
	LINN S/WTR	LINN S/WTR	LINN S/WTR	Total	
	LBCC	LBCC	Total		
	Total	Total			
	Code 9-32	Total			
	Value \$2,666,528	Code 9-45	Code 9-50		
	LINN CNTY	Value \$10,128,824	Value \$4,387,358		
	ESD LBL	LINN CNTY	LINN CNTY		
	SD #9	ESD LBL	ESD LBL		
	HM CR BNDS	SD #9	SD #9		
	SCIO R/F	GP WTR #2	GP WTR #2		
	LINN S/WTR	LINN S/WTR	LINN S/WTR		
	LBCC	LBCC	Total		
	Total	Total			
	Code 9-32	Total			
	Value \$2,666,528	Code 9-45	Code 9-50		
	LINN CNTY	Value \$10,128,824	Value \$4,387,358		
	ESD LBL	LINN CNTY	LINN CNTY		
	SD #9	ESD LBL	ESD LBL		
	HM CR BNDS	SD #9	SD #9		
	SCIO R/F	GP WTR #2	GP WTR #2		
	LINN S/WTR	LINN S/WTR	LINN S/WTR		
	LBCC	LBCC	Total		
	Total	Total			
	Code 9-32	Total			
	Value \$2,666,528	Code 9-45	Code 9-50		
	LINN CNTY	Value \$10,128,824	Value \$4,387,358		
	ESD LBL	LINN CNTY	LINN CNTY		
	SD #9	ESD LBL	ESD LBL		
	HM CR BNDS	SD #9	SD #9		
	SCIO R/F	GP WTR #2	GP WTR #2		
	LINN S/WTR	LINN S/WTR	LINN S/WTR		
	LBCC	LBCC	Total		
	Total	Total			
	Code 9-32	Total			
	Value \$2,666,528	Code 9-45	Code 9-50		
	LINN CNTY	Value \$10,128,824	Value \$4,387,358		
	ESD LBL	LINN CNTY	LINN CNTY		
	SD #9	ESD LBL	ESD LBL		
	HM CR BNDS	SD #9	SD #9		
	SCIO R/F	GP WTR #2	GP WTR #2		
	LINN S/WTR	LINN S/WTR	LINN S/WTR		
	LBCC	LBCC	Total		
	Total	Total			
	Code 9-32	Total			
	Value \$2,666,528	Code 9-45	Code 9-50		
	LINN CNTY	Value \$10,128,824	Value \$4,387,358		
	ESD LBL	LINN CNTY	LINN CNTY		
	SD #9	ESD LBL	ESD LBL		
	HM CR BNDS	SD #9	SD #9		
	SCIO R/F	GP WTR #2	GP WTR #2		
	LINN S/WTR	LINN S/WTR	LINN S/WTR		
	LBCC	LBCC	Total		
	Total	Total			
	Code 9-32	Total			
	Value \$2,666,528	Code 9-45	Code 9-50		
	LINN CNTY	Value \$10,128,824	Value \$4,387,358		
	ESD LBL	LINN CNTY	LINN CNTY		
	SD #9	ESD LBL	ESD LBL		
	HM CR BNDS	SD #9	SD #9		
	SCIO R/F	GP WTR #2	GP WTR #2		
	LINN S/WTR	LINN S/WTR	LINN S/WTR		
	LBCC	LBCC	Total		
	Total	Total			
	Code 9-32	Total			
	Value \$2,666,528	Code 9-45	Code 9-50		
	LINN CNTY	Value \$10,128,824	Value \$4,387,358		
	ESD LBL	LINN CNTY	LINN CNTY		
	SD #9	ESD LBL	ESD LBL		
	HM CR BNDS	SD #9	SD #9		
	SCIO R/F	GP WTR #2	GP WTR #2		
	LINN S/WTR	LINN S/WTR	LINN S/WTR		
	LBCC	LBCC	Total		
	Total	Total			
	Code 9-32	Total			
	Value \$2,666,528	Code 9-45	Code 9-50		
	LINN CNTY	Value \$10,128,824	Value \$4,387,358		
	ESD LBL	LINN CNTY	LINN CNTY		
	SD #9	ESD LBL	ESD LBL		
	HM CR BNDS	SD #9	SD #9		
	SCIO R/F	GP WTR #2	GP WTR #2		
	LINN S/WTR	LINN S/WTR	LINN S/WTR		
	LBCC	LBCC	Total		
	Total	Total			
	Code 9-32	Total			
	Value \$2,666,528	Code 9-45	Code 9-50		
	LINN CNTY	Value \$10,128,824	Value \$4,387,358		
	ESD LBL	LINN CNTY	LINN CNTY		
	SD #9	ESD LBL	ESD LBL		
	HM CR BNDS	SD #9	SD #9		
	SCIO R/F	GP WTR #2	GP WTR #2		
	LINN S/WTR	LINN S/WTR	LINN S/WTR		
	LBCC	LBCC	Total		
	Total	Total			
	Code 9-32	Total			
	Value \$2,666,528	Code 9-45	Code 9-50		
	LINN CNTY	Value \$10,128,824	Value \$4,387,358		
	ESD LBL	LINN CNTY	LINN CNTY		
	SD #9	ESD LBL	ESD LBL		
	HM CR BNDS	SD #9	SD #9		
	SCIO R/F	GP WTR #2	GP WTR #2		
	LINN S/WTR	LINN S/WTR	LINN S/WTR		
	LBCC	LBCC	Total		
	Total	Total			
	Code 9-32	Total			
	Value \$2,666,528	Code 9-45	Code 9-50		
	LINN CNTY	Value \$10,128,824	Value \$4,387,358		
	ESD LBL	LINN CNTY	LINN CNTY		
	SD #9	ESD LBL	ESD LBL		
	HM CR BNDS	SD #9	SD #9		
	SCIO R/F	GP WTR #2	GP WTR #2		
	LINN S/WTR	LINN S/WTR	LINN S/WTR		
	LBCC	LBCC	Total		
	Total	Total			
	Code 9-32	Total			
	Value \$2,666,528	Code 9-45	Code 9-50		
	LINN CNTY	Value \$10,128,824	Value \$4,387,358		
	ESD LBL	LINN CNTY	LINN CNTY		
	SD #9	ESD LBL	ESD LBL		
	HM CR BNDS	SD #9	SD #9		
	SCIO R/F	GP WTR #2	GP WTR #2		
	LINN S/WTR	LINN S/WTR	LINN S/WTR		
	LBCC	LBCC	Total		
	Total	Total			
	Code 9-32	Total			
	Value \$2,666,528	Code 9-45	Code 9-50		
</					



**LINN COUNTY TAX SUMMARY**

**2000-2001**

Code 95-4	Code 95-12	Code 127-4	Code 127-10	Code 140-17	Code 509-3
Value \$988,586	Value \$1,557,575	Value \$9,971,231	Value \$20,304	Value \$2,955,714	Value \$6,697,614
LINN CNTY 3.2027	LINN CNTY 3.2027	LINN CNTY 3.2027	LINN CNTY 3.2027	LINN CNTY 3.2027	LINN CNTY 3.2027
ESD LBL 0.3049	ESD LBL 0.3049	ESD LBL 0.3049	ESD LBL 0.3049	ESD WILL 0.2788	ESD LBL 0.3049
SD #95 4.5080	SD #95 4.5080	SD #127J 4.8880	SD #127J 4.8880	SD #14J 6.1412	SD #509J 5.2896
SD #95 BNDS 1.5361	LINN S/WTR 0.0000	LYONS R/F 2.6373	IDANHA CTY 2.5029	JEFFSN R/F 1.1955	SD #509J BNDS 0.0651
SCIO R/F 1.2745	LBCC 0.7059	LINN S/WTR 0.0000	LINN S/WTR 0.0000	JEFF PARK 0.2914	ALBANY R/F 1.3371
S SANT WTR 1.0044	Total 8.7215	CHEM CM COL 0.7557	CHEM CM COL 0.7557	SANTIAM WTR 0.0000	LINN S/WTR 0.0000
LINN S/WTR 0.0000		CHEM LIBRARY 0.0818	CHEM LIBRARY 0.0818	LINN S/WTR 0.0000	LBCC 0.7059
LBCC 0.7059	Code 95-13	Total 11.8704	Total 11.7360	LBCC 0.7059	Total 10.9053
Total 12.5365	Value \$2,399,434			Total 11.8155	
Code 95-7	LINN CNTY 3.2027	Code 127-5	Code 140-12	Code 509-4	
Value \$683,550	ESD LBL 0.3049	Value \$11,442,509	Value \$287,107	Value \$160,099	
LINN CNTY 3.2027	SD #95 4.5080	LINN CNTY 3.2027	LINN CNTY 3.2027	LINN CNTY 3.2027	
ESD LBL 0.3049	SCIO R/F 1.2745	ESD LBL 0.3049	ESD WILL 0.2788	ESD LBL 0.3049	
SD #95 4.5080	LINN S/WTR 0.0000	SD #127J 4.8880	SD #14J 6.1412	SD #509J 5.2896	
SD #95 BNDS 1.5361	LBCC 0.7059	GATES R/F 2.3000	SCIO R/F 1.2745	SD #509J BNDS 0.0651	
STAYTON R/F 1.4601	Total 9.9960	LINN S/WTR 0.0000	JEFF PARK 0.2914	TANGENT R/F 2.5739	
LINN S/WTR 0.0000		CHEM CM COL 0.7557	LINN S/WTR 0.0000	LINN S/WTR 0.0000	
LBCC 0.7059	Code 95-14	CHEM LIBRARY 0.0818	LBCC 0.7059	LBCC 0.7059	
Total 11.7177	Value \$4,200,720	Total 11.5331	Total 11.8945	Total 12.1421	
Code 95-8	LINN CNTY 3.2027	Code 127-6	Code 140-13	Code 509-5	
Value \$19,400,444	ESD LBL 0.3049	Value \$851,079	Value \$23,244	Value \$247,995	
LINN CNTY 3.2027	SD #95 4.5080	LINN CNTY 3.2027	LINN CNTY 3.2027	LINN CNTY 3.2027	
ESD LBL 0.3049	LYONS R/F 2.6373	ESD LBL 0.3049	ESD WILL 0.2788	ESD LBL 0.3049	
SD #95 4.5080	LINN S/WTR 0.0000	SD #127J 4.8880	SD #14J 6.1412	SD #509J 5.2896	
SD #95 BNDS 1.5361	LBCC 0.7059	SW HM AMB 0.3882	SCIO R/F 1.2745	SD #509J BNDS 0.0651	
SCIO R/F 1.2745	Total 11.3588	LINN S/WTR 0.0000	JEFF PARK 0.2914	HLY/SHD R/F 0.9022	
SANTIAM WTR 0.0000		CHEM CM COL 0.7557	S SANT WTR 1.0044	LINN S/WTR 0.0000	
LINN S/WTR 0.0000	Code 127-1	CHEM LIBRARY 0.0818	LINN S/WTR 0.0000	LBCC 0.7059	
LBCC 0.7059	<b>MILL CITY</b>	Total 9.6213	LBCC 0.7059	Total 10.4704	
Total 11.5321	Value \$36,749,539		Total 12.8989		
Code 95-9	LINN CNTY 3.2027	Code 127-7	Code 140-14	Code 552-2	
Value \$722,583	ESD LBL 0.3049	Value \$2,473,821	Value \$86,278	Value \$1,598,733	
LINN CNTY 3.2027	SD #127J 4.8880	LINN CNTY 3.2027	LINN CNTY 3.2027	LINN CNTY 3.2027	
ESD LBL 0.3049	MILL CTY 4.1578	ESD LBL 0.3049	ESD WILL 0.2788	ESD LBL 0.3049	
SD #95 4.5080	MIL CTY R/F 1.3048	LINN S/WTR 0.0000	SD #14J 6.1412	SD #552 5.3245	
SD #95 BNDS 1.5361	LINN S/WTR 0.0000	SD #127J 4.8880	SD #14J 6.1412	HALSEY CTY 7.5192	
STAYTON R/F 1.4601	CHEM CM COL 0.7557	GATES CTY 0.6632	JEFF PARK 0.2914	LINN S/WTR 0.0000	
SANTIAM WTR 0.0000	CHEM LIBRARY 0.0818	GATES R/F 2.3000	LINN S/WTR 0.0000	LBCC 0.7059	
LINN S/WTR 0.0000	Total 14.6957	LINN S/WTR 0.0000	LBCC 0.7059	Total 17.0572	
LBCC 0.7059	Code 127-2	CHEM CM COL 0.7557	Total 10.6200		
Total 11.7177	Value \$16,842,287	CHEM LIBRARY 0.0818	Code 140-15	Code 552-3	
Code 95-10	LINN CNTY 3.2027	Total 12.1963	Value \$2,541,401	Value \$78,249,828	
SCIO	ESD LBL 0.3049	Code 127-8	LINN CNTY 3.2027	LINN CNTY 3.2027	
Value \$21,486,113	SD #127J 4.8880	Value \$443,774	ESD WILL 0.2788	ESD LBL 0.3049	
LINN CNTY 3.2027	MIL CTY R/F 1.3048	LINN CNTY 3.2027	SD #14J 6.1412	SD #552 5.3245	
ESD LBL 0.3049	LINN S/WTR 0.0000	ESD LBL 0.3049	SCIO R/F 1.2745	BRNSVL R/F 1.0658	
SD #95 4.5080	CHEM CM COL 0.7557	SD #127J 4.8880	JEFF PARK 0.2914	LINN S/WTR 0.0000	
SD #95 BNDS 1.5361	CHEM LIBRARY 0.0818	IDANHA R/F 1.6592	SANTIAM WTR 0.0000	LBCC 0.7059	
SCIO CTY 4.9057	Total 10.5379	LINN S/WTR 0.0000	LINN S/WTR 0.0000	Total 10.6038	
SCIO R/F 1.2745		CHEM CM COL 0.7557	LBCC 0.7059	Code 552-4	
LINN S/WTR 0.0000	Code 127-3	CHEM LIBRARY 0.0818	Total 11.8945	Value \$110,007,133	
LBCC 0.7059	Value \$22,081,829	Total 10.8923	Code 140-16	Value \$78,249,828	
Total 16.4378	LINN CNTY 3.2027	Code 127-9	Value \$4,966,185	LINN CNTY 3.2027	
Code 95-11	ESD LBL 0.3049	<b>IDANHA</b>	LINN CNTY 3.2027	ESD LBL 0.3049	
Value \$1,263	SD #127J 4.8880	Value \$2,199,266	ESD WILL 0.2788	SD #552 5.3245	
LINN CNTY 3.2027	MIL CTY R/F 1.3048	LINN CNTY 3.2027	SD #14J 6.1412	HLY/SHD R/F 0.9022	
ESD LBL 0.3049	LINN S/WTR 0.0000	ESD LBL 0.3049	JEFFSN R/F 1.1955	LINN S/WTR 0.0000	
SD #95 4.5080	CHEM CM COL 0.7557	SD #127J 4.8880	JEFF PARK 0.2914	LBCC 0.7059	
SD #95 BNDS 1.5361	CHEM LIBRARY 0.0818	IDANHA CTY 2.5029	LINN S/WTR 0.0000	Total 10.4402	
SCIO CTY 4.9057	Total 10.5379	IDANHA R/F 1.6592	LBCC 0.7059	Code 552-5	
SCIO R/F 1.2745		LINN S/WTR 0.0000	Total 11.8155	Value \$3,043,784	
SANTIAM WTR 0.0000	Code 127-4	CHEM CM COL 0.7557	Code 509-2	Value \$110,007,133	
LINN S/WTR 0.0000	Value \$2,199,266	CHEM LIBRARY 0.0818	Value \$541,861	LINN CNTY 3.2027	
LBCC 0.7059	LINN CNTY 3.2027	Total 13.3952	ESD LBL 0.3049	ESD LBL 0.3049	
Total 16.4378	Total 9.2331		SD #509J 5.2896	SD #552 5.3245	
Code 95-12			SD #509J BNDS 0.0651	TANGENT R/F 2.5739	
Value \$1,263			LINN S/WTR 0.0000	LINN S/WTR 0.0000	
LINN CNTY 3.2027			LBCC 0.7059	LBCC 0.7059	
ESD LBL 0.3049			Total 9.5682	Total 12.1119	
SD #95 4.5080					
SD #95 BNDS 1.5361					
SCIO CTY 4.9057					
SCIO R/F 1.2745					
SANTIAM WTR 0.0000					
LINN S/WTR 0.0000					
LBCC 0.7059					
Total 16.4378					



**LINN COUNTY TAX SUMMARY**

**2000-2001**

Code 552-6 Value \$1,596,324 LINN CNTY 3.2027 ESD LBL 0.3049 SD #552 5.3245 HARSBRG R/F 0.9779 LINN S/WTR 0.0000 LBCC 0.7059 Total 10.5159	Code 552-8 Value \$192,842 LINN CNTY 3.2027 ESD LBL 0.3049 SD #552 5.3245 SW HM R/F 0.4012 LINN S/WTR 0.0000 LBCC 0.7059 Total 9.9392	Code 552-10 Value \$7,509,920 LINN CNTY 3.2027 ESD LBL 0.3049 SD #552 5.3245 HLY/SHD R/F 0.9022 LTL MUD WTR 0.0000 LINN S/WTR 0.0000 LBCC 0.7059 Total 10.4402	Code 552-12 <b>HALSEY</b> Value \$22,176,920 LINN CNTY 3.2027 ESD LBL 0.3049 SD #552 5.3245 HALSEY CTY 7.5192 HLY/SHD R/F 0.9022 LINN S/WTR 0.0000 LBCC 0.7059 Total 17.9594	Code 552-15 Value \$141,020 LINN CNTY 3.2027 ESD LBL 0.3049 SD #552 5.3245 OAK C/CNTR 0.0000 LINN S/WTR 0.0000 LBCC 0.7059 Total 9.5380	Code 552-20 Value \$154,628,691 LINN CNTY 3.2027 ESD LBL 0.3049 SD #552 5.3245 HLY/SHD R/F 0.9022 EM PUD 0.0000 LINN S/WTR 0.0000 LBCC 0.7059 Total 10.4402
Code 552-7 Value \$7,542,661 LINN CNTY 3.2027 ESD LBL 0.3049 SD #552 5.3245 LINN S/WTR 0.0000 LBCC 0.7059 Total 9.5380	Code 552-9 Value \$180,913 LINN CNTY 3.2027 ESD LBL 0.3049 SD #552 5.3245 LTL MUD WTR 0.0000 LINN S/WTR 0.0000 LBCC 0.7059 Total 9.5380	Code 552-11 Value \$2,141,552 LINN CNTY 3.2027 ESD LBL 0.3049 SD #552 5.3245 HARSBRG R/F 0.9779 LTL MUD WTR 0.0000 LINN S/WTR 0.0000 LBCC 0.7059 Total 10.5159	Code 552-14 Value \$2,826,476 LINN CNTY 3.2027 ESD LBL 0.3049 SD #552 5.3245 HLY/SHD R/F 0.9022 OAK C/CNTR 0.0000 LINN S/WTR 0.0000 LBCC 0.7059 Total 10.4402	<b>BROWNSVILLE</b> Value \$45,875,603 LINN CNTY 3.2027 ESD LBL 0.3049 SD #552 5.3245 BRNSVL CTY 7.9867 BRNSVL R/F 1.0658 LINN S/WTR 0.0000 LBCC 0.7059 Total 18.5905	

**District Abbreviations**

ALBANY CTY ALBANY R/F BRNSVL BNDS BRNSVL CTY BRNSVL R/F CHEM CM COL CHEM LIBRARY CORVLS R/F DEV/CON WTR ESD LANE ESD LBL ESD WILL GATES CTY GATES R/F GP WTR GP WTR #2 HALSEY CTY HARRSBG CTY HARSBRG R/F HLY/SHD R/F HM CR BNDS HRSBRG SP UR IDANHA CTY IDANHA R/F JEFF PARK JEFFSN R/F LANE CM COL LBCC LEB BNDS LEB EL BNDS LEB SP UR I LEB SP UR II LEBANON CTY LEBANON R/F LINN CNTY LINN S/WTR LTL MUD WTR	Albany City Albany Rural Fire Dist. Brownsville Bonds Brownsville City Brownsville Rural Fire Dist. Chemeketa Community College Chemeketa Library Corvallis Rural Fire Dist. Dever Conner Water Dist. Lane Ed Serv Dist - EI LinnBtlnc ESD - Hi Willamette Reginal ESD - EI Gates City Gates Rural Fire Dist. Grand Prairie Water Control Dist. Grand Prairie Water Dist. 2 Halsey City Harrisburg City Harrisburg Rural Fire Dist. Halsey/Shed Rural Fire Dist. Leb #9 Hmltn Crk Sch Bonds Harrisburg Redev Special Levy Idanha City Idanha Rural Fire Dist. Jefferson Park Rec. Dist. Jefferson Rural Fire Dist. Lane Community College Linn-Benton Community College Lebanon City % Bonds Lebanon #9 Elementary Bonds Lebanon Special Levy UR I Lebanon Special Levy UR II Lebanon City Lebanon Rural Fire Dist. Linn County Linn Soil & Water Conserv. Dist. Little Muddy Creek Water Dist	LY/MEH WTR LYONS CTY LYONS R/F MIL CTY R/F MILL CTY MILRSBG CTY MOHAWK R/F N LEB WTR OAK C/CNTR S SANT WTR SANTIAM WTR SCIO CTY SCIO R/F SD #127J SD #14J SD #27J SD #4J SD #509J SD #55 SD #552 SD #7 SD #79J SD #8J SD #9 SD #95 SD #95 Bonds SODAVLE CTY STAYTON R/F SW HM AMB SW HM CEM SW HM CTY SW HM R/F TANGENT CTY TANGENT R/F WTRLOO CTY WYATT BNDS	Lyons/Mehama Water Dist. Lyons City Lyons Rural Fire Dist. Mill City Rural Fire Dist. Mill City Millersburg City Mohawk Valley Rural Fire Dist. North Lebanon Water Dist. Oak Creek Community Center Dist. South Santiam Water Dist. Santiam Water Dist. Scio City Scio Rural Fire Dist. Santiam Canyon School Dist Jefferson School Dist. North Santiam School Dist Eugene School Dist. Corvallis School Dist. Sweet Home School Dist. Central Linn School Dist. Harrisburg School Dist. Marcola School Dist. Albany School Dist. Lebanon Community School Dist. Scio School Dist. Scio School Dist. Bonds Sodaville City Stayton Rural Fire Dist. Sweet Home Ambulance Dist. Sweet Home Cemetary Dist. Sweet Home City Sweet Home Rural Fire Dist. Tangent City Tangent Rural Fire Dist. Waterloo City Harrisburg #7 Wyatt Bonds
--	--	--	---

This summary is designed to provide information about the current Assessment and Tax Roll. More detailed or specific information is available from our office, located at the County Courthouse in Albany.

If you have questions concerning property you own or more general questions about the property tax system, you are welcome to discuss your situation with a member of our staff. If you are eligible for a program to help reduce your property taxes, we will gladly help in any way we can.

Ad valorem taxes are based on the assessed value of your property as of January 1st. Those taxes provide funds for the operation of schools, cities, fire districts, and other miscellaneous taxing districts.

The Assessor does not tax, but values your property through methods prescribed by state law and regulation. The Assessor does not determine the amount of money your taxing district receives. To control spending, you should take an active interest in local budget meetings and elections. You are, in effect, purchasing services with your tax dollars.

Taxes are due and payable in three installments. The first third is due on November 15th, the second third on February 15th, and the final third on May 15th. A three percent discount will be allowed on taxes paid in full on or before November 15th. A two percent discount will be allowed if two-thirds of the total taxes are paid on or before November 15th. No discount will be allowed on taxes paid after November 15th. Interest at a rate of 1-1/3% per month or fraction of a month will be charged on any payment made after the installment due date.

By law this office must credit your property tax payments to the earliest year for which taxes are due on your property. In order to receive a discount on your current year's bill, all prior year's taxes, penalties and interest must first be fully paid.

I, Mark Noakes, Linn County Assessor/Tax Collector, State of Oregon, do hereby certify that the assessed valuations, tax levies and taxes set forth herein contained, are true and correct copies of the originals, as the same appears on file in my office and custody.

Mark Noakes  
Linn County Assessor/Tax Collector

Visit the Linn County web site at  
[www.co.linn.or.us](http://www.co.linn.or.us)

Location:  
Linn County Courthouse, Room 215

Mailing Address:  
Linn County Assessment & Taxation  
PO Box 100  
Albany OR 97321

Phone:  
(541) 967-3808