

•••• 2003-2004 ••••

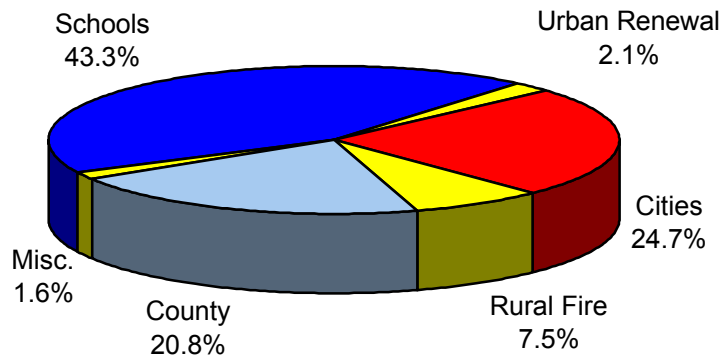
SUMMARY OF ASSESSMENT AND TAX ROLL - LINN COUNTY, OREGON

VALUATION for Tax Year beginning July 1, 2003

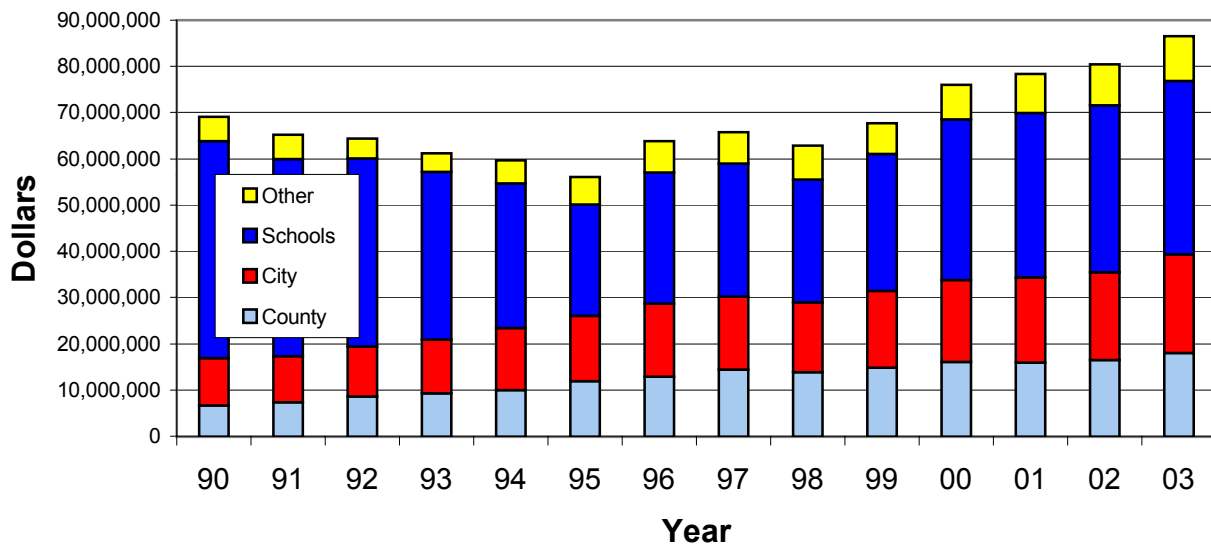
	Measure 5 Value	Assessed Value	Veteran's Exemption	Taxable Value
Real Property	6,185,529,750	5,120,123,070	12,237,600	5,107,885,470
Manufactured Structures	139,212,956	120,835,802	1,584,824	119,250,978
Personal Property	193,138,500	193,138,500		193,138,500
Public Utilities	244,907,190	242,461,669		242,461,669
Total	6,762,788,396	5,676,559,041	13,822,424	5,662,736,617

Measure 5 Value (M5V) is the Real Market Value (RMV) adjusted for special assessments.
 Assessed Value (AV) is the lesser of M5V and the Measure 50 Maximum Assessed Value (MAV).
 Taxable Value is Assessed Value less Veteran's Exemption.

DISTRIBUTION of TAX DOLLARS



TAX DOLLARS by YEAR



Schools includes Community Colleges and Education Service Districts.

LINN COUNTY TAX SUMMARY

2003-2004

ASSESSMENT & TAXES by DISTRICT

	MEASURE 5 VALUE	TAXABLE VALUE	LESS URBAN RENEWAL	TOTAL VALUE TO COMPUTE TAX RATES	MAXIMUM TAX RATE	TAXES IMPOSED
COUNTY	6,762,788,396	5,662,736,617	78,608,441	5,584,128,176	3.3860	17,990,645.07
CITIES						
Albany	2,146,957,508	1,861,193,606	24,077,227	1,837,116,379	8.1244	14,968,792.74
Brnsvl	70,800,600	52,438,169		52,438,169	7.9732	418,092.81
Gates	3,544,100	2,653,118		2,653,118	0.6314	1,675.21
Halsey	39,285,910	30,773,167		30,773,167	8.1920	252,093.56
Harrisbrg	131,015,601	101,767,976	8,064,487	93,703,489	4.6817	476,447.13
Idanha	2,739,880	2,230,456		2,230,456	2.5029	5,582.60
Lebanon	627,875,523	527,960,272	44,156,741	483,803,531	5.5490	2,891,421.81
Lyons	58,553,664	45,118,397		45,118,397	3.0007	135,386.59
Mill City	55,057,570	41,638,069		41,638,069	4.1578	173,122.81
Millrsbrg	320,287,365	292,829,347		292,829,347	0.0000	0.00
Scio	31,269,229	24,335,839		24,335,839	4.9057	119,384.28
Sodaville	13,603,790	10,357,169		10,357,169	0.4080	4,225.76
Swt Home	321,831,421	254,645,108		254,645,108	8.7885	1,945,952.03
Tangent	98,303,944	78,995,886		78,995,886	0.0000	0.00
Waterloo	8,888,680	6,344,566		6,344,566	0.0000	0.00
TOTAL						21,392,177.33
RURAL FIRE PROTECTION DISTRICTS						
Albany	502,767,172	447,104,188		447,104,188	2.1500	961,271.58
Brnsvl	182,680,644	140,512,638		140,512,638	1.1985	168,401.83
Corvls	119,088,356	98,124,477		98,124,477	2.1140	207,434.40
Gates	22,478,315	15,662,142		15,662,142	2.3000	36,022.92
Hly/Shd	400,971,553	365,852,226		365,852,226	0.9894	361,974.10
Harrisbrg	264,129,033	211,906,579	8,064,487	203,842,092	1.1299	230,323.17
Idanha	3,203,030	2,662,172		2,662,172	1.6592	4,417.10
Jefferson	201,098,100	164,690,020		164,690,020	1.7955	295,700.80
Lebanon	1,294,504,977	1,061,770,876	46,466,727	1,015,304,149	2.2600	2,277,925.95
Lyons	135,784,438	106,946,661		106,946,661	2.6469	283,077.68
Mill City	80,649,071	61,638,268		61,638,268	2.3149	142,686.50
Scio	284,783,204	225,626,200		225,626,200	1.2745	287,559.87
Stayton	76,578,590	62,257,959		62,257,959	1.4407	89,694.98
Swt Home	606,356,466	470,569,223		470,569,223	1.5000	705,854.44
Mohawk	78,760	62,437		62,437	2.5642	160.10
Tangent	205,351,693	168,282,320		168,282,320	2.5739	433,141.10
TOTAL						6,485,646.52
SCHOOL DISTRICTS						
SD 4J	9,249,563	7,556,460		7,556,460	7.2850	47,385.99
SD 7J	258,411,133	207,369,562	8,064,487	199,305,075	6.9097	1,362,018.39
SD 8J	3,091,334,961	2,670,189,416	24,077,227	2,646,112,189	4.9785	12,886,610.97
SD 9	1,398,617,114	1,143,470,366	46,466,727	1,097,003,639	7.5549	8,125,796.57
SD 14J	23,909,884	20,081,291		20,081,291	5.1775	100,434.05
SD 27J	200,258,223	160,883,043		160,883,043	4.8584	773,682.84
SD 55	721,311,639	569,000,458		569,000,458	6.8949	3,819,749.40
SD 79J	53,190	46,692		46,692	4.6687	217.99
SD 95	224,687,817	179,907,868		179,907,868	4.5080	803,457.25
Scio Bnds	213,256,956	170,507,454		170,507,454	1.3723	233,987.50
SD 127J	150,104,545	113,838,888		113,838,888	4.8880	542,023.63
SD 509J	111,624,897	91,238,345		91,238,345	7.1215	619,710.62
552 Ctrl Ln	573,225,430	499,154,228		499,154,228	5.7156	2,755,832.19
TOTAL						32,070,907.39

LINN COUNTY TAX SUMMARY

2003-2004

	MEASURE 5 VALUE	TAXABLE VALUE	LESS URBAN RENEWAL	TOTAL VALUE TO COMPUTE TAX RATES	MAXIMUM TAX RATE	TAXES IMPOSED
EDUCATIONAL SERVICE DISTRICTS						
LBL	6,529,317,536	5,474,169,131	78,608,441	5,395,560,690	0.3049	1,600,697.00
Wil Reg	224,168,107	180,964,334		180,964,334	0.2967	52,939.08
Lane	9,302,753	7,603,152		7,603,152	0.2232	1,690.54
TOTAL						1,655,326.62
COMMUNITY COLLEGES						
Lane CC	267,713,886	214,972,714	8,064,487	206,908,227	0.8790	179,857.39
LBCC	6,224,113,195	5,237,616,626	70,543,954	5,167,072,672	0.6777	3,432,056.99
Chemeketa	270,961,315	210,147,277		210,147,277	0.7713	159,307.25
Chem Lib	270,961,315	210,147,277		210,147,277	0.0818	17,189.95
TOTAL						3,788,411.58
MISCELLANEOUS DISTRICTS						
Leb Aqua Cntr	1,398,617,114	1,143,470,366	46,466,727	1,097,003,639	0.2400	261,517.39
Jef Pk Rec	24,107,204	20,267,334		20,267,334	0.2914	5,905.81
Sw Hm Cem	517,323,802	400,160,159		400,160,159	0.2166	86,674.75
Dev/Con Wtr	14,950,626	12,735,418		12,735,418	0.1614	2,055.41
Ly/Meh Wtr	76,197,021	60,231,477		60,231,477	2.2269	134,129.66
N Leb Wtr	65,640,098	54,563,014		54,563,014	0.1420	7,746.14
S Sant Wtr	10,738,498	8,836,970		8,836,970	1.0044	8,875.71
TOTAL						506,904.87
URBAN RENEWAL DISTRICTS						
Albany	2,146,957,508	1,861,193,606		1,861,193,606	0.1970	360,726.80
Harrisburg	131,028,001	101,780,376		101,780,376	1.5291	155,606.85
Lebanon I	627,896,273	527,977,238		527,977,238	0.7493	389,522.25
Lebanon II	630,728,510	530,300,780		530,300,780	1.5496	808,361.27
Lebanon III	639,426,480	537,900,518		537,900,518	0.1281	63,679.97
TOTAL						1,777,897.14

SPECIAL ASSESSMENTS

			Forest Patrol	94,710.18
			Forest Patrol Surcharge	80,750.00
			Little Muddy Creek Water Control	6,699.37
			Fertile District Imp Co	662.53
DELINQUENT SEWER ASSESSMENTS:				
	Albany	20,479.30	Grand Prairie Water Control Sub I	10,421.32
	Halsey	69.73	Grand Prairie Water Control Sub II	151,377.58
	Lebanon	9,638.24	Mobile Home Ombudsman Fee	29,185.71
	Millersburg	1,584.87	Calapooia Irrigation	5,036.37
	Sweet Home	9,583.71	Additional Farmland Tax	1,333.71
	Tangent	676.60	Additional Forestland Tax	609.62
	TOTAL	42,032.45	Delinquent Sewer	42,032.45
			TOTAL	422,818.84
			Corrections	391,857.06
			Late Filing Penalties	37,174.77

TOTAL IMPOSED AD VALOREM TAXES AND ASSESSMENTS 86,519,767.19

IMPOSED AD VALOREM TAX BY PROPERTY TYPE

REAL PROPERTY	78,292,452.32
PERSONAL PROPERTY	2,855,586.35
MANUFACTURED STRUCTURES	1,777,412.01
UTILITIES	3,594,316.51
TOTAL	86,519,767.19

LINN COUNTY TAX SUMMARY

2003-2004

Code 7-1	Code 7-8	Code 8-2	Code 8-9	Code 8-17	Code 8-23
HARRISBURG	Value \$11,665,752	Value \$99,136,730	Value \$73,840,497	Value \$16,425,859	Value \$2,444,646
Value \$89,879,810	LINN CNTY 3.2794	LINN CNTY 3.3860	LINN CNTY 3.3860	LINN CNTY 3.3860	LINN CNTY 3.3860
LINN CNTY 3.2794	ESD LBL 0.2808	ESD LBL 0.3049	ESD LBL 0.3049	ESD LBL 0.3049	ESD LBL 0.3049
ESD LBL 0.2808	LANE COM COL 0.8095	LBCC 0.6777	LBCC 0.6777	LBCC 0.6777	LBCC 0.6777
LANE COM COL 0.8095	SD #7 6.3623	SD #8J 4.9785	SD #8J 4.9785	SD #8J 4.9785	SD #8J 4.9785
SD #7 6.3623	HARRSBG CTY 4.6817	ALBANY R/F 2.1500	JEFFSN R/F 1.7955	SCIO R/F 1.2745	LEBANON R/F 2.2600
HARRSBG CTY 4.6817	HARRSBG R/F 1.0402	LINN S/WTR 0.0000	LINN S/WTR 0.0000	LINN S/WTR 0.0000	N LEB WTR 0.1420
HARRSBG R/F 1.0402	LINN S/WTR 0.0000	Total 11.4971	Total 11.1426	Total 10.6216	LINN S/WTR 0.0000
LINN S/WTR 0.0000	HRSBRG UR 1.5291				Total 11.7491
HRSBRG UR 1.5291	Total 17.9830	Code 8-3	Code 8-10	Code 8-18	Code 8-24
Total 17.9830	Value \$14,797,082	Value \$3,385,134	Value \$5,872,849	Value \$1,734,534	Value \$4,024,054
Code 7-2	Value \$58,504,547	LINN CNTY 3.3860	LINN CNTY 3.3860	LINN CNTY 3.3860	Value \$4,024,054
Value \$58,504,547	LINN CNTY 3.3860	ESD LBL 0.3049	ESD LBL 0.3049	ESD LBL 0.3049	LINN CNTY 3.3860
LINN CNTY 3.3860	ESD LBL 0.3049	LBCC 0.6777	LBCC 0.6777	LBCC 0.6777	ESD LBL 0.3049
ESD LBL 0.3049	LANE COM COL 0.8790	SD #8J 4.9785	SD #8J 4.9785	SD #8J 4.9785	LBCC 0.6777
LANE COM COL 0.8790	SD #7 6.9097	LINN S/WTR 0.0000	JEFFSN R/F 1.7955	ALBANY R/F 2.1500	SD #8J 4.9785
SD #7 6.9097	HARRSBG R/F 1.1299	Total 9.3471	DEV/CON WTR 0.1614	S SANT WTR 1.0044	JEFFSN R/F 1.7955
HARRSBG R/F 1.1299	LINN S/WTR 0.0000	Code 8-4	LINN S/WTR 0.0000	LINN S/WTR 0.0000	S SANT WTR 1.0044
LINN S/WTR 0.0000	Total 12.6095	Value \$36,975,355	Total 11.3040	Total 12.5015	LINN S/WTR 0.0000
Total 12.6095	Code 7-10	LINN CNTY 3.3860	Code 8-11	Code 8-19	Total 12.1470
Code 7-3	Value \$46,530	ESD LBL 0.3049	TANGENT	Value \$297,414	Code 8-25
Value \$372,968	LINN CNTY 3.3860	LBCC 0.6777	Value \$78,649,646	LINN CNTY 3.3860	Value \$3,837,952
LINN CNTY 3.3860	ESD LBL 0.3049	SD #8J 4.9785	LINN CNTY 3.3860	ESD LBL 0.3049	LINN CNTY 3.3860
ESD LBL 0.3049	LANE COM COL 0.8790	ALBANY R/F 2.1500	ESD LBL 0.3049	LBCC 0.6777	ESD LBL 0.3049
LANE COM COL 0.8790	SD #7 6.9097	GP WTR 0.0000	LBCC 0.6777	SD #8J 4.9785	LBCC 0.6777
SD #7 6.9097	HARRSBG R/F 1.1299	LINN S/WTR 0.0000	SD #8J 4.9785	SCIO R/F 1.2745	SD #8J 4.9785
BRNSVL R/F 1.1985	LTL MUD WTR 0.0000	Total 11.4971	TANGENT CTY 0.0000	S SANT WTR 1.0044	JEFFSN R/F 1.7955
LINN S/WTR 0.0000	LINN S/WTR 0.0000	Code 8-5	TANGENT R/F 2.5739	GP WTR 0.0000	GP WTR 0.0000
Total 12.6781	Total 12.6095	Value \$230,961,496	LINN S/WTR 0.0000	Total 11.6260	LINN S/WTR 0.0000
Code 7-4	Code 7-11	MILLERSBURG	Total 11.9210	Total 11.9210	Total 11.1426
Value \$919,665	Value \$12,400	Value \$230,961,496	Code 8-13	Code 8-20	Code 8-26
LINN CNTY 3.3860	LINN CNTY 3.2794	LINN CNTY 3.3860	Value \$346,240	Value \$1,803,540	Value \$61,707,967
ESD LBL 0.3049	ESD LBL 0.2808	ESD LBL 0.3049	LINN CNTY 3.3860	LINN CNTY 3.3860	LINN CNTY 3.3860
LANE COM COL 0.8790	LANE COM COL 0.8095	SD #8J 4.9785	ESD LBL 0.3049	ESD LBL 0.3049	ESD LBL 0.3049
SD #7 6.9097	SD #7 6.3623	MILRSBG CTY 0.0000	LBCC 0.6777	SD #8J 4.9785	ESD LBL 0.3049
HLV/SHD R/F 0.9894	HARRSBG R/F 1.0402	ALBANY R/F 2.1500	SD #8J 4.9785	SCIO R/F 1.2745	LBCC 0.6777
LINN S/WTR 0.0000	LINN S/WTR 0.0000	LINN S/WTR 0.0000	TANGENT CTY 0.0000	N LEB WTR 0.1420	SD #8J 4.9785
Total 12.4690	HRSBRG UR 1.1263	Total 11.4971	LINN S/WTR 0.0000	LINN S/WTR 0.0000	GP WTR #2 0.0000
Code 7-5	Total 12.8985	Code 8-6	Total 9.3471	Total 10.7636	LINN S/WTR 0.0000
Value \$4,542,243	Code 7-12	Value \$1,595,255	Code 8-14	Code 8-21	Total 11.4971
LINN CNTY 3.3860	Value \$222,414	LINN CNTY 3.3860	Value \$1,557,171	Value \$7,310,324	Code 8-27
ESD LBL 0.3049	LINN CNTY 3.2794	ESD LBL 0.3049	LINN CNTY 3.3860	LINN CNTY 3.3860	Value \$122,686,637
LANE COM COL 0.8790	ESD LBL 0.2808	LBCC 0.6777	ESD LBL 0.3049	ESD LBL 0.3049	LINN CNTY 3.3424
SD #7 6.9097	LANE COM COL 0.8095	SD #8J 4.9785	LBCC 0.6777	LBCC 0.6777	ESD LBL 0.3016
LINN S/WTR 0.0000	SD #7 6.3623	MILRSBG CTY 0.0000	SD #8J 4.9785	SD #8J 4.9785	LBCC 0.6704
Total 11.4796	HARRSBG CTY 4.6817	LINN S/WTR 0.0000	HLV/SHD R/F 0.9894	ALBANY R/F 2.1500	SD #8J 4.9246
Code 7-6	LINN S/WTR 0.0000	Total 9.3471	LINN S/WTR 0.0000	N LEB WTR 0.1420	ALBANY CTY 8.1244
Value \$552,019	HRSBRG UR 1.4394	Code 8-7	Total 10.3365	LINN S/WTR 0.0000	GP WTR 0.0000
LINN CNTY 3.3860	Total 16.8531	Value \$59,866,693	Code 8-15	Total 11.6391	LINN S/WTR 0.0000
ESD LBL 0.3049	Code 8-1	LINN CNTY 3.3860	Value \$442,681	Code 8-22	ALBANY UR 0.1970
LANE COM COL 0.8790	ALBANY	ESD LBL 0.3049	LINN CNTY 3.3860	Value \$46,846	Total 17.5604
SD #7 6.9097	Value \$1,435,958,582	LBCC 0.6777	ESD LBL 0.3049	LINN CNTY 3.3860	Code 8-28
LTL MUD WTR 0.0000	LINN CNTY 3.3424	SD #8J 4.9785	LBCC 0.6777	ESD LBL 0.3049	Value \$1,435,014
LINN S/WTR 0.0000	ESD LBL 0.3016	MILRSBG CTY 0.0000	SD #8J 4.9785	LBCC 0.6777	LINN CNTY 3.3860
Total 11.4796	LBCC 0.6704	JEFFSN R/F 1.7955	LEBANON R/F 2.2600	SD #8J 4.9785	ESD LBL 0.3049
Code 7-7	SD #8J 4.9246	LINN S/WTR 0.0000	LINN S/WTR 0.0000	N LEB WTR 0.1420	LBCC 0.6777
Value \$25,854,132	ALBANY CTY 8.1244	Total 11.1426	Total 11.6071	LINN S/WTR 0.0000	SD #8J 4.9785
LINN CNTY 3.3860	LINN S/WTR 0.0000	Code 8-8	Code 8-16	Total 9.4891	TANGENT R/F 2.5739
ESD LBL 0.3049	ALBANY UR 0.1970	Value \$75,840,013	Value \$10,245,312	GP WTR #2 0.0000	GP WTR #2 0.0000
LANE COM COL 0.8790	Total 17.5604	LINN CNTY 3.3860	LINN CNTY 3.3860	LINN S/WTR 0.0000	LINN S/WTR 0.0000
SD #7 6.9097		ESD LBL 0.3049	ESD LBL 0.3049	Total 11.4611	Total 11.9210
HARRSBG R/F 1.1299		LBCC 0.6777	LBCC 0.6777		
LTL MUD WTR 0.0000		SD #8J 4.9785	SD #8J 4.9785		
LINN S/WTR 0.0000		TANGENT R/F 2.5739	CORVLS R/F 2.1140		
Total 12.6095		LINN S/WTR 0.0000	LINN S/WTR 0.0000		
		Total 11.9210	Total 11.4611		

Tax rates are shown in dollars per thousand of taxable value. Rates are before Measure 5 compression.

LINN COUNTY TAX SUMMARY

2003-2004

Code 8-29	Code 8-39	Code 9-3	Code 9-12	Code 9-17	Code 9-22
Value \$5,100,071	Value \$388,971	Value \$21,197,017	Value \$7,071,963	Value \$12,297,678	Value \$70,860
LINN CNTY 3.3860	LINN CNTY 3.3424	LINN CNTY 3.3860	LINN CNTY 3.2548	LINN CNTY 3.2548	LINN CNTY 3.2548
ESD LBL 0.3049	ESD LBL 0.3016	ESD LBL 0.3049	ESD LBL 0.2783	ESD LBL 0.2783	ESD LBL 0.2783
LBCC 0.6777	LBCC 0.6704	LBCC 0.6777	LBCC 0.6187	LBCC 0.6187	LBCC 0.6187
SD #8J 4.9785	SD #8J 4.9246	SD #9 7.5549	SD #9 6.8933	SD #9 6.8933	SD #9 6.8933
TANGENT R/F 2.5739	ALBANY CTY 8.1244	LINN S/WTR 0.0000	LEBANON CTY 5.5490	LEBANON CTY 5.5490	LEBANON CTY 5.5490
GP WTR 0.0000	ALBANY R/F 2.1500	LEB AQUA CNTR 0.2400	LEBANON R/F 2.0621	LEBANON R/F 2.0621	LEBANON R/F 2.0621
LINN S/WTR 0.0000	GP WTR #2 0.0000	Total 12.1635	LINN S/WTR 0.0000	GP WTR #2 0.0000	N LEB WTR 0.1420
Total 11.9210	LINN S/WTR 0.0000	Code 9-4	LEB AQUA CNTR 0.2190	LINN S/WTR 0.0000	LEB AQUA CNTR 0.2190
	ALBANY UR 0.1970	SODAVILLE	LEB UR I 0.7493	LEB AQUA CNTR 0.2190	LEB UR I 0.7493
	Total 19.7104	Value \$8,621,767	LEB UR II 1.5496	LEB UR I 0.7493	LEB UR II 1.5496
Code 8-30		LINN CNTY 3.3860	LEB UR III 0.1281	LEB UR II 1.5496	LEB UR III 0.1281
Value \$35,232,991		ESD LBL 0.3049	Total 21.3022	LEB UR III 0.1281	Total 21.4442
LINN CNTY 3.3424	Code 8-40	LBCC 0.6777		Total 21.3022	
ESD LBL 0.3016	Value \$33,595	SD #9 7.5549	Code 9-13		Code 9-23
LBCC 0.6704	LINN CNTY 3.3860	SODAVLE CTY 0.4080	Value \$16,966	Code 9-18	Value \$88,206
SD #8J 4.9246	ESD LBL 0.3049	LEBANON R/F 2.2600	LINN CNTY 3.3564	Value \$16,520,072	LINN CNTY 3.2548
ALBANY CTY 8.1244	LBCC 0.6777	LINN S/WTR 0.0000	ESD LBL 0.2982	LINN CNTY 3.3860	ESD LBL 0.2783
GP WTR #2 0.0000	SD #8J 4.9785	LEB AQUA CNTR 0.2400	LBCC 0.6629	ESD LBL 0.3049	LBCC 0.6187
LINN S/WTR 0.0000	MILRSBG CTY 0.0000	Total 14.8315	SD #9 7.3882	LBCC 0.6777	SD #9 6.8933
ALBANY UR 0.1970	ALBANY R/F 2.1500		LEBANON R/F 2.2101	SD #9 7.5549	LEBANON CTY 5.5490
Total 17.5604	GP WTR 0.0000	Code 9-5	LINN S/WTR 0.0000	LEBANON R/F 2.2600	LINN S/WTR 0.0000
	LINN S/WTR 0.0000	LEBANON	LEB AQUA CNTR 0.2347	LEB AQUA CNTR 0.2400	LEB AQUA CNTR 0.2190
	Total 11.4971	Value \$399,160,394	LEB UR I 0.6158	Total 14.4235	LEB UR I 0.6994
Code 8-33		LINN CNTY 3.2548	Total 14.7663		LEB UR II 1.4166
Value \$683,875	Code 8-42	ESD LBL 0.2783		Code 9-19	LEB UR III 0.1131
LINN CNTY 3.3860	Value \$186,043	LBCC 0.6187	Code 9-14	Value \$561,070	Total 19.0422
ESD LBL 0.3049	LINN CNTY 3.3860	SD #9 6.8933	Value \$12,156,210	LINN CNTY 3.3860	
LBCC 0.6777	ESD LBL 0.3049	LEBANON CTY 5.5490	LINN CNTY 3.3860	ESD LBL 0.3049	Code 9-24
SD #8J 4.9785	LBCC 0.6777	LEBANON R/F 2.0621	ESD LBL 0.3049	LBCC 0.6777	Value \$0
TANGENT R/F 2.5739	SD #8J 4.9785	LEBANON R/F 2.0621	LBCC 0.6777	SD #9 7.5549	LINN CNTY 3.2548
OAKV C/CNTR 0.0000	MILRSBG CTY 0.0000	LINN S/WTR 0.0000	SD #9 7.5549	LEB AQUA CNTR 0.2400	ESD LBL 0.2783
LINN S/WTR 0.0000	JEFFSN R/F 1.7955	LEB AQUA CNTR 0.2190	LEBANON R/F 2.2600	Total 12.1635	LBCC 0.6187
Total 11.9210	JEFF PARK 0.2914	LEB UR I 0.7493	GP WTR #2 0.0000		SD #9 6.8933
	LINN S/WTR 0.0000	LEB UR II 1.5496	LINN S/WTR 0.0000	Code 9-20	LEBANON CTY 5.5490
Code 8-34	Total 11.4340	LEB UR III 0.1281	LEB AQUA CNTR 0.2400	Value \$257,167	LEB AQUA CNTR 0.2190
Value \$18,807,569	Code 8-46	Total 21.3022	Total 14.4235	LINN CNTY 3.3860	LEB UR I 0.6994
LINN CNTY 3.3860	Value \$266,926,425			ESD LBL 0.3049	LEB UR II 1.4166
ESD LBL 0.3049	LINN CNTY 3.3424	Code 9-7	Code 9-15	LBCC 0.6777	LEB UR III 0.1131
LBCC 0.6777	ESD LBL 0.3016	Value \$3,852,308	Value \$219,760	SD #9 7.5549	Total 19.0422
SD #8J 4.9785	LBCC 0.6704	LINN CNTY 3.3860	LINN CNTY 3.2548	LEBANON R/F 2.2600	
HLY/SHD R/F 0.9894	SD #8J 4.9246	ESD LBL 0.3049	ESD LBL 0.2783	N LEB WTR 0.1420	Code 9-25
OAKV C/CNTR 0.0000	ALBANY CTY 8.1244	LBCC 0.6777	LBCC 0.6187	LEB AQUA CNTR 0.2400	Value \$36,833,228
LINN S/WTR 0.0000	LINN S/WTR 0.0000	SD #9 7.5549	SD #9 6.8933	Total 14.5655	LINN CNTY 3.2548
Total 10.3365	ALBANY UR 0.1970	LEBANON R/F 2.2600	LEBANON CTY 5.5490		ESD LBL 0.2783
	Total 17.5604	N LEB WTR 0.1420	LEBANON R/F 2.0621	Code 9-21	LBCC 0.6187
Code 8-35		LINN S/WTR 0.0000	LINN S/WTR 0.0000	Value \$1,533,785	SD #9 6.8933
Value \$4,051,850	Code 9-1	LEB AQUA CNTR 0.2400	LEB AQUA CNTR 0.2190	LINN CNTY 3.2548	LEBANON CTY 5.5490
LINN CNTY 3.3860	Value \$1,735,402	Total 14.5655	LEB UR I 0.7493	ESD LBL 0.2783	LEBANON R/F 2.0621
ESD LBL 0.3049	LINN CNTY 3.3860	Code 9-8	LEB UR II 1.5496	LBCC 0.6187	LINN S/WTR 0.0000
LBCC 0.6777	ESD LBL 0.3049	Value \$13,556,833	LEB UR III 0.1281	SD #9 6.8933	LEB AQUA CNTR 0.2190
SD #8J 4.9785	LBCC 0.6777	LINN CNTY 3.3860	Total 21.3022	LEBANON CTY 5.5490	LEB UR I 0.7493
CORVLS R/F 2.1140	SD #9 7.5549	ESD LBL 0.3049		LEBANON R/F 2.0621	LEB UR II 1.5496
OAKV C/CNTR 0.0000	SODAVLE CTY 0.4080	LBCC 0.6777	Code 9-16	LEB AQUA CNTR 0.2190	LEB UR III 0.1281
LINN S/WTR 0.0000	LINN S/WTR 0.0000	SD #9 7.5549	Value \$361,046	LEB UR I 0.7493	Total 21.3022
Total 11.4611	LEB AQUA CNTR 0.2400	SCIO R/F 1.2745	LINN CNTY 3.2548	LEB UR II 1.5496	
	Total 12.5715	LINN S/WTR 0.0000	ESD LBL 0.2783	LEB UR III 0.1281	Code 9-26
Code 8-36		LEB AQUA CNTR 0.2400	LBCC 0.6187	Total 21.3022	Value \$1,000
Value \$349,585	Code 9-2	Total 13.4380	SD #9 6.8933		LINN CNTY 3.2548
LINN CNTY 3.3860	Value \$330,135,938		LEBANON CTY 5.5490	Tax rates are shown in dollars per thousand of taxable value. Rates are before Measure 5 compression.	ESD LBL 0.2783
ESD LBL 0.3049	LINN CNTY 3.3860	Code 9-9	LEBANON R/F 2.0621		LBCC 0.6187
LBCC 0.6777	ESD LBL 0.3049	Value \$1,005,525	N LEB WTR 0.1420		SD #9 6.8933
SD #8J 4.9785	LBCC 0.6777	LINN CNTY 3.3860	LINN S/WTR 0.0000		LEBANON CTY 5.5490
OAKV C/CNTR 0.0000	SD #9 7.5549	ESD LBL 0.3049	LEB AQUA CNTR 0.2190		LINN S/WTR 0.0000
LINN S/WTR 0.0000	LEBANON R/F 2.2600	LBCC 0.6777	LEB UR I 0.7493		LEB AQUA CNTR 0.2190
Total 9.3471	LINN S/WTR 0.0000	SD #9 7.5549	LEB UR II 1.5496		LEB UR I 0.6994
	LEB AQUA CNTR 0.2400	LINN S/WTR 0.0000	LEB UR III 0.1281		LEB UR II 1.4166
	Total 14.4235	LEB AQUA CNTR 0.2400	Total 21.4442		LEB UR III 0.1131
		Total 12.1635			Total 19.0422

LINN COUNTY TAX SUMMARY

2003-2004

Code 9-27	Code 9-33	Code 9-40	Code 9-46	Code 9-51	Code 9-56
Value \$973,269	Value \$18,590,952	Value \$65,789,140	Value \$15,422,498	Value \$0	Value \$5,100
LINN CNTY 3.3068	LINN CNTY 3.3860	LINN CNTY 3.3860	LINN CNTY 3.3860	LINN CNTY 3.3860	LINN CNTY 3.2548
ESD LBL 0.2870	ESD LBL 0.3049	ESD LBL 0.3049	ESD LBL 0.3049	ESD LBL 0.3049	ESD LBL 0.2783
LBCC 0.6379	LBCC 0.6777	LBCC 0.6777	LBCC 0.6777	LBCC 0.6777	LBCC 0.6187
SD #9 7.1103	SD #9 7.5549	SD #9 7.5549	SD #9 7.5549	SD #9 7.5549	SD #9 6.8933
LEBANON R/F 2.1270	LEBANON R/F 2.2600	LEBANON R/F 2.2600	LEBANON R/F 2.2600	LEBANON R/F 2.2600	LEBANON CTY 5.5490
GP WTR #2 0.0000	GP WTR #2 0.0000	LEB AQUA CNTR 0.2400	LEB AQUA CNTR 0.2400	N LEB WTR 0.1420	LINN S/WTR 0.0000
LINN S/WTR 0.0000	LINN S/WTR 0.0000	Total 14.4235	Total 14.4235	LEB AQUA CNTR 0.2400	LEB AQUA CNTR 0.2190
LEB AQUA CNTR 0.2259	LEB AQUA CNTR 0.2400			Total 14.5655	LEB UR I 0.6994
LEB UR II 1.2093	Total 14.4235	Code 9-41	Code 9-47		LEB UR II 1.4166
Total 14.9042		Value \$2,492,277	Value \$50,904,278	Code 9-52	LEB UR III 0.1131
	Code 9-34	LINN CNTY 3.3860	LINN CNTY 3.2548	Value \$0	Total 19.0422
Code 9-28	Value \$3,129,963	ESD LBL 0.3049	ESD LBL 0.2783	LINN CNTY 3.2548	
Value \$4,000	LINN CNTY 3.3860	LBCC 0.6777	LBCC 0.6187	ESD LBL 0.2783	Code 9-57
LINN CNTY 3.3068	ESD LBL 0.3049	SD #9 7.5549	SD #9 6.8933	LBCC 0.6187	WATERLOO
ESD LBL 0.2870	LBCC 0.6777	LEBANON R/F 2.2600	LEBANON CTY 5.5490	SD #9 6.8933	Value \$6,344,566
LBCC 0.6379	SD #9 7.5549	N LEB WTR 0.1420	LEBANON R/F 2.0621	LEBANON CTY 5.5490	LINN CNTY 3.3860
SD #9 7.1103	LEBANON R/F 2.2600	LEB AQUA CNTR 0.2400	LINN S/WTR 0.0000	LEBANON R/F 2.0621	ESD LBL 0.3049
GP WTR #2 0.0000	LINN S/WTR 0.0000	Total 14.4235	LEB AQUA CNTR 14.5655	N LEB WTR 0.1420	LBCC 0.6777
LINN S/WTR 0.0000	LEB AQUA CNTR 0.2400	Code 9-42	LEB UR I 0.7493	LEB AQUA CNTR 0.2190	SD #9 7.5549
LEB AQUA CNTR 0.2259	Total 14.4235	Value \$6,845,747	LEB UR II 1.5496	LEB UR I 0.7493	WTRLOO CTY 0.0000
LEB UR II 1.0763		LINN CNTY 3.3860	LEB UR III 0.1281	LEB UR II 1.5496	LEBANON R/F 2.2600
Total 12.6442	Code 9-35	ESD LBL 0.3049	Total 21.3022	LEB UR III 0.1281	LINN S/WTR 0.0000
	Value \$164,013	LBCC 0.6777	Code 9-48	Total 21.4442	LEB AQUA CNTR 0.2400
Code 9-29	LINN CNTY 3.3860	SD #9 7.5549	Value \$34,201,983	Total 14.4235	Total 14.4235
Value \$2,329,619	ESD LBL 0.3049	LEB AQUA CNTR 12.1635	LINN CNTY 3.3860	Code 9-53	
LINN CNTY 3.2548	LBCC 0.6777	Total 12.1635	ESD LBL 0.3049	Value \$1,352,239	Code 9-58
ESD LBL 0.2783	SD #9 7.5549	Code 9-43	LBCC 0.6777	LINN CNTY 3.3068	Value \$3,831,464
LBCC 0.6187	LEBANON R/F 2.2600	Value \$38,172	SD #9 7.5549	ESD LBL 0.2870	LINN CNTY 3.2548
SD #9 6.8933	N LEB WTR 0.1420	LINN CNTY 3.2548	LEBANON R/F 2.2600	LBCC 0.6379	ESD LBL 0.2783
LEBANON CTY 5.5490	LINN S/WTR 0.0000	ESD LBL 0.2783	N LEB WTR 0.1420	SD #9 7.1103	LBCC 0.6187
LEBANON R/F 2.0621	LEB AQUA CNTR 0.2400	LBCC 0.6187	LINN S/WTR 0.0000	LEBANON R/F 2.1270	SD #9 6.8933
LINN S/WTR 0.0000	Total 14.5655	SD #9 6.8933	LEB AQUA CNTR 0.2400	GP WTR #2 0.0000	LEBANON CTY 5.5490
LEB AQUA CNTR 0.2190	Code 9-36	LEBANON CTY 5.5490	Total 14.5655	LINN S/WTR 0.0000	LEBANON R/F 2.0621
LEB UR I 0.7493	Value \$259,476	LEBANON R/F 2.0621	Code 9-49	LEB AQUA CNTR 0.2259	LINN S/WTR 0.0000
LEB UR II 1.5496	LINN CNTY 3.3860	N LEB WTR 0.1420	Value \$68,549	LEB UR II 1.2093	LEB AQUA CNTR 0.2190
LEB UR III 0.1281	ESD LBL 0.3049	LEB AQUA CNTR 0.2190	LINN CNTY 3.2548	Total 14.9042	LEB UR I 0.7493
Total 21.3022	LBCC 0.6777	LEB UR I 0.7493	ESD LBL 0.2783	Code 9-54	LEB UR II 1.5496
Code 9-31	SD #9 7.5549	LEB UR II 1.5496	LBCC 0.6187	Value \$317,221	LEB UR III 0.1281
Value \$536,353	LINN S/WTR 0.0000	LEB UR III 0.1281	SD #9 6.8933	LINN CNTY 3.2548	Total 21.3022
LINN CNTY 3.2548	LEB AQUA CNTR 0.2400	Total 21.4442	LEBANON CTY 5.5490	ESD LBL 0.2783	
ESD LBL 0.2783	Total 12.1635	Code 9-44	LEBANON R/F 2.0621	LBCC 0.6187	Code 9-60
LBCC 0.6187	Code 9-38	Value \$11,144,396	N LEB WTR 0.1420	SD #9 7.1103	Value \$277,729
SD #9 6.8933	Value \$9,297,124	LINN CNTY 3.3860	LINN S/WTR 0.0000	LEBANON CTY 5.5490	LINN CNTY 3.3860
LEBANON CTY 5.5490	LINN CNTY 3.3860	ESD LBL 0.3049	LEBANON R/F 2.0621	LEBANON R/F 2.0621	ESD LBL 0.3049
LEBANON R/F 2.0621	ESD LBL 0.3049	LBCC 0.6777	LINN S/WTR 0.0000	LINN S/WTR 0.0000	LBCC 0.6777
GP WTR #2 0.0000	LBCC 0.6777	SD #9 7.5549	LEB AQUA CNTR 0.2190	LEBANON CTY 5.5490	SD #9 7.5549
LINN S/WTR 0.0000	SD #9 7.5549	SCIO R/F 1.2745	LEB UR I 0.7493	LEBANON R/F 2.0621	GP WTR 0.0000
LEB AQUA CNTR 0.2190	SCIO R/F 1.2745	LINN S/WTR 0.0000	LEB UR II 1.5496	LINN S/WTR 0.0000	LINN S/WTR 0.0000
LEB UR I 0.7493	LINN S/WTR 0.0000	LEB AQUA CNTR 0.2400	LEB UR III 0.1281	LEB AQUA CNTR 0.2190	LEB AQUA CNTR 0.2400
LEB UR II 1.5496	LEB AQUA CNTR 0.2400	Total 13.4380	Total 21.4442	LEB UR II 1.5496	Total 12.1635
LEB UR III 0.1281	Total 13.4380	Code 9-45	Code 9-50	LEB UR III 0.1281	
Total 21.3022	Code 9-39	Value \$4,036,928	Value \$4,639,423	Total 21.3022	Code 9-62
Code 9-32	Value \$1,440,682	LINN CNTY 3.3860	LINN CNTY 3.3860	Code 9-55	Value \$1,155,527
Value \$2,783,157	LINN CNTY 3.3860	ESD LBL 0.3049	ESD LBL 0.3049	Value \$11,000	LINN CNTY 3.3860
LINN CNTY 3.3860	ESD LBL 0.3049	LBCC 0.6777	LBCC 0.6777	LINN CNTY 3.3068	ESD LBL 0.3049
ESD LBL 0.3049	LBCC 0.6777	SD #9 7.5549	SD #9 7.5549	ESD LBL 0.2870	LBCC 0.6777
LBCC 0.6777	SD #9 7.5549	GP WTR #2 0.0000	GP WTR #2 0.0000	LBCC 0.6379	SD #9 7.5549
SD #9 7.5549	SCIO R/F 1.2745	LINN S/WTR 0.0000	LINN S/WTR 0.0000	SD #9 7.1103	TANGENT R/F 2.5739
BRNSVL R/F 1.1985	N LEB WTR 0.1420	LEB AQUA CNTR 0.2400	LEB AQUA CNTR 0.2400	GP WTR #2 0.0000	LINN S/WTR 0.0000
LINN S/WTR 0.0000	LINN S/WTR 0.0000	Total 12.1635	Total 12.1635	LINN S/WTR 0.0000	LEB AQUA CNTR 0.2400
LEB AQUA CNTR 0.2400	LEB AQUA CNTR 0.2400			LEB AQUA CNTR 0.2259	Total 14.7374
Total 13.3620	Total 13.5800			LEB UR II 1.0763	
				Total 12.6442	

Tax rates are shown in dollars per thousand of taxable value. Rates are before Measure 5 compression.

LINN COUNTY TAX SUMMARY

2003-2004

Code 9-63	Code 9-69	Code 9-74	Code 27-5	Code 27-11	Code 55-2	
Value \$10,601	Value \$6,517,576	Value \$658,880	Value \$14,860,675	Value \$3,411,060	Value \$83,767,694	
LINN CNTY 3.3860	LINN CNTY 3.2548	LINN CNTY 3.3860	LINN CNTY 3.3860	LINN CNTY 3.3860	LINN CNTY 3.3860	
ESD LBL 0.3049	ESD LBL 0.2783	ESD LBL 0.3049	ESD WILL 0.2967	ESD WILL 0.2967	ESD LBL 0.3049	
LBCC 0.6777	LBCC 0.6187	LBCC 0.6777	CHEMEKETA CC 0.7713	LBCC 0.6777	LBCC 0.6777	
SD #9 7.5549	SD #9 6.8933	SD #9 7.5549	CHEMEKETA LIBR 0.0818	SD #27J 4.8584	SD #55 6.8949	
N LEB WTR 0.1420	LEBANON CTY 5.5490	SW HM FIRE/AM 1.5000	SD #27J 4.8584	SCIO R/F 1.2745	SW HM FIRE/AM 1.5000	
LINN S/WTR 0.0000	LEBANON R/F 2.0621	LINN S/WTR 0.0000	LYONS R/F 2.6469	LINN S/WTR 0.0000	SW HM CEM 0.2166	
LEB AQUA CNTR 0.2400	LINN S/WTR 0.0000	LEB AQUA CNTR 0.2400	LY/MEH WTR 2.2269	Total 10.4933	LINN S/WTR 0.0000	
Total 12.3055	LEB AQUA CNTR 0.2190	Total 13.6635	LINN S/WTR 0.0000	Total 12.9801	Total 12.9801	
	LEB UR I 0.7493		Total 14.2680			
	LEB UR II 1.5496	Code 9-75		Code 27-12	Code 55-3	
	LEB UR III 0.1281	Value \$738,505	Code 27-6	Value \$71,406	Value \$9,101,961	
Code 9-64	Total 21.3022	LINN CNTY 3.3860	Value \$359,080	LINN CNTY 3.3860	LINN CNTY 3.3860	
Value \$765,324		ESD LBL 0.3049	LINN CNTY 3.3860	ESD WILL 0.2967	ESD LBL 0.3049	
LINN CNTY 3.3860	Code 9-70	LBCC 0.6777	ESD WILL 0.2967	LBCC 0.6777	LBCC 0.6777	
ESD LBL 0.3049	Value \$580,081	SD #9 7.5549	CHEMEKETA CC 0.7713	SD #27J 4.8584	SD #55 6.8949	
LBCC 0.6777	LINN CNTY 3.3636	SW HM FIRE/AM 1.5000	CHEMEKETA LIBR 0.0818	LINN S/WTR 0.0000	SW HM CEM 0.2166	
SD #9 7.5549	LINN CNTY 3.3636	LINN S/WTR 0.0000	SD #27J 4.8584	Total 9.2188	LINN S/WTR 0.0000	
LEBANON R/F 2.2600	ESD LBL 0.3029	LEB AQUA CNTR 0.2400	LY/MEH WTR 2.2269	Total 11.4801	Total 11.4801	
GP WTR 0.0000	LBCC 0.6733	Total 13.6635	LINN S/WTR 0.0000	Code 27-13		
LINN S/WTR 0.0000	SD #9 7.5046		Total 11.6211	Value \$563,299		
LEB AQUA CNTR 0.2400	LEBANON R/F 2.2450			LINN CNTY 3.3860	Code 55-4	
Total 14.4235	LINN S/WTR 0.0000	Code 27-1		ESD WILL 0.2967	Value \$73,494,853	
	LEB AQUA CNTR 0.2384	LYONS	Code 27-7	LBCC 0.6777	LINN CNTY 3.3860	
Code 9-65	LEB UR III 0.0957	Value \$44,965,711	Value \$18,213	SD #27J 4.8584	ESD LBL 0.3049	
Value \$2,440,221	Total 14.4235	LINN CNTY 3.3860	LINN CNTY 3.3860	LYONS R/F 2.6469	LBCC 0.6777	
LINN CNTY 3.3860		ESD WILL 0.2967	ESD WILL 0.2967	LINN S/WTR 0.0000	SD #55 6.8949	
ESD LBL 0.3049	Code 9-71	CHEMEKETA CC 0.7713	CHEMEKETA CC 0.7713	Total 11.8657	LINN S/WTR 0.0000	
LBCC 0.6777	Value \$478,516	CHEMEKETA LIBR 0.0818	CHEMEKETA LIBR 0.0818	Total 11.2635	Total 11.2635	
SD #9 7.5549	LINN CNTY 3.3636	SD #27J 4.8584	SD #27J 4.8584	Code 27-14	Code 55-5	
ALBANY R/F 2.1500	ESD LBL 0.3029	LYONS CTY 3.0007	LYONS CTY 3.0007	Value \$911,846	Value \$2,710,518	
GP WTR #2 0.0000	LBCC 0.6733	LYONS R/F 2.6469	LYONS R/F 2.6469	LINN CNTY 3.3860	Value \$2,710,518	
LINN S/WTR 0.0000	SD #9 7.5046	LINN S/WTR 0.0000	LINN S/WTR 0.0000	ESD WILL 0.2967	LINN CNTY 3.3860	
LEB AQUA CNTR 0.2400	LEBANON R/F 2.2450	Total 17.2687	Total 15.0418	LBCC 0.6777	ESD LBL 0.3049	
Total 14.3135	GP WTR #2 0.0000			SD #27J 4.8584	LBCC 0.6777	
	LINN S/WTR 0.0000	Code 27-2	Code 27-8	STAYTON R/F 1.4407	SD #55 6.8949	
Code 9-66	LEB AQUA CNTR 0.2384	Value \$4,818,120	Value \$88,462	SANTIAM WTR 0.0000	BRNSVL R/F 1.1985	
Value \$579,311	LEB UR III 0.0957	LINN CNTY 3.3860	LINN CNTY 3.3860	LINN S/WTR 0.0000	LINN S/WTR 0.0000	
LINN CNTY 3.3860	Total 14.4235	ESD WILL 0.2967	ESD WILL 0.2967	Total 10.6595	Total 12.4620	
ESD LBL 0.3049		CHEMEKETA CC 0.7713	CHEMEKETA CC 0.7713	Code 27-15	Code 55-6	
LBCC 0.6777	Code 9-72	CHEMEKETA LIBR 0.0818	CHEMEKETA LIBR 0.0818	Value \$29,042	Value \$73,788,970	
SD #9 7.5549	Value \$1,742,927	SD #27J 4.8584	SD #27J 4.8584	LINN CNTY 3.3860	LINN CNTY 3.3860	
TANGENT R/F 2.5739	LINN CNTY 3.2548	LINN S/WTR 0.0000	LYONS CTY 3.0007	ESD WILL 0.2967	ESD LBL 0.3049	
GP WTR #2 0.0000	ESD LBL 0.2783	Total 9.3942	LINN S/WTR 0.0000	LBCC 0.6777	LBCC 0.6777	
LINN S/WTR 0.0000	LBCC 0.6187		Total 12.3949	SD #27J 4.8584	SD #55 6.8949	
LEB AQUA CNTR 0.2400	SD #9 6.8933	Code 27-3	Code 27-9	SANTIAM WTR 0.0000	SW HM FIRE/AM 1.5000	
Total 14.7374	LEBANON CTY 5.5490	Value \$30,820,277	Value \$46,011	LINN S/WTR 0.0000	LINN S/WTR 0.0000	
	LEBANON R/F 2.0621	LINN CNTY 3.3860	LINN CNTY 3.3860	Total 9.2188	Total 12.7635	
Code 9-67	GP WTR #2 0.0000	ESD WILL 0.2967	ESD WILL 0.2967	Code 40-1	Code 55-11	
Value \$404,642	LINN S/WTR 0.0000	CHEMEKETA CC 0.7713	CHEMEKETA CC 0.7713	Value \$7,556,460	Value \$7,944,601	
LINN CNTY 3.3860	LEB AQUA CNTR 0.2190	CHEMEKETA LIBR 0.0818	CHEMEKETA LIBR 0.0818	LINN CNTY 3.3860	LINN CNTY 3.3860	
ESD LBL 0.3049	LEB UR I 0.7493	SD #27J 4.8584	SD #27J 4.8584	ESD LANE 0.2232	ESD LBL 0.3049	
LBCC 0.6777	LEB UR II 1.5496	LYONS R/F 2.6469	LYONS CTY 3.0007	LBCC 0.6777	LBCC 0.6777	
SD #9 7.5549	LEB UR III 0.1281	LINN S/WTR 0.0000	LINN S/WTR 0.0000	SD #27J 4.8584	SD #55 6.8949	
TANGENT R/F 2.5739	Total 21.3022	Total 12.0411	Total 14.6218	LANE COM COL 0.8790	SD #55 6.8949	
GP WTR 0.0000	Code 9-73	Code 27-4	Code 27-10	SD #4J 7.2850	Total 11.2635	
LINN S/WTR 0.0000	Value \$4,031,093	Value \$331,840	Value \$59,588,001	HARSBRG R/F 1.1299		
LEB AQUA CNTR 0.2400	LINN CNTY 3.2548	LINN CNTY 3.3860	LINN CNTY 3.3860	LINN S/WTR 0.0000	Code 55-12	
Total 14.7374	ESD LBL 0.2783	ESD WILL 0.2967	ESD WILL 0.2967	Total 12.9031	Value \$6,241,016	
	LBCC 0.6187	CHEMEKETA CC 0.7713	CHEMEKETA CC 0.7713	Code 55-1	LINN CNTY 3.3860	
Code 9-68	SD #9 6.8933	CHEMEKETA LIBR 0.0818	CHEMEKETA LIBR 0.0818	SWEET HOME	ESD LBL 0.3049	
Value \$8,881,649	LEBANON CTY 5.5490	SD #27J 4.8584	SD #27J 4.8584	Value \$254,293,151	LBCC 0.6777	
LINN CNTY 3.3636	LEBANON R/F 2.0621	STAYTON R/F 1.4407	STAYTON R/F 1.4407	LINN CNTY 3.3860	SD #55 6.8949	
ESD LBL 0.3029	LINN S/WTR 0.0000	LINN S/WTR 0.0000	LINN S/WTR 0.0000	ESD LBL 0.3049	SW HM CEM 0.2166	
LBCC 0.6733	LEB AQUA CNTR 0.2190	Total 10.8349	Total 10.6595	LBCC 0.6777	Total 11.4801	
SD #9 7.5046	LEB UR I 0.7493			SD #55 6.8949		
LEBANON R/F 2.2450	LEB UR II 1.5496	Tax rates are shown in dollars per thousand of taxable value. Rates are before Measure 5 compression.			SW HM CTY 8.7885	
LINN S/WTR 0.0000	LEB UR III 0.1281				SW HM FIRE/AM 1.5000	
LEB AQUA CNTR 0.2384	Total 21.3022				SW HM CEM 0.2166	
LEB UR III 0.0957					LINN S/WTR 0.0000	
Total 14.4235				Total 21.7686		

LINN COUNTY TAX SUMMARY

2003-2004

Code 55-13	Code 79-1	Code 95-9	Code 127-1	Code 127-8	Code 140-15
Value \$46,404,380	Value \$46,692	Value \$784,798	MILL CITY	Value \$453,910	Value \$2,622,522
LINN CNTY 3.3860	LINN CNTY 3.3860	LINN CNTY 3.3860	Value \$41,638,069	LINN CNTY 3.3860	LINN CNTY 3.3860
ESD LBL 0.3049	ESD LANE 0.2232	ESD LBL 0.3049	LINN CNTY 3.3860	ESD LBL 0.3049	ESD WILL 0.2967
LBCC 0.6777	LANE COM COL 0.8790	LBCC 0.6777	ESD LBL 0.3049	CHEMEKETA CC 0.7713	LBCC 0.6777
SD #55 6.8949	SD #79J 4.6687	SD #95 4.5080	CHEMEKETA CC 0.7713	CHEMEKETA LIBR 0.0818	SD #14J 5.1775
SW HM FIRE/AM 1.5000	LINN S/WTR 0.0000	SD #95 BNDS 1.3723	CHEMEKETA LIBR 0.0818	SD #127J 4.8880	SCIO R/F 1.2745
SW HM CEM 0.2166	Total 9.1569	STAYTON R/F 1.4407	SD #127J 4.8880	IDANHA R/F 1.6592	JEFF PARK 0.2914
Total 12.9801		SANTIAM WTR 0.0000	MILL CTY 4.1578	LINN S/WTR 0.0000	SANTIAM WTR 0.0000
	Code 95-2	LINN S/WTR 0.0000	MIL CTY R/F 2.3149	Total 11.0912	LINN S/WTR 0.0000
Code 55-15	Value \$116,104,052	Total 11.6896	LINN S/WTR 0.0000		Total 11.1038
Value \$10,548,235	LINN CNTY 3.3860	Code 95-10	Total 15.9047	Code 127-9	
LINN CNTY 3.3860	ESD LBL 0.3049	SCIO	Code 127-2	IDANHA	Code 140-16
ESD LBL 0.3049	LBCC 0.6777	Value \$24,334,339	Value \$20,000,199	Value \$2,208,262	Value \$5,096,892
LBCC 0.6777	SD #95 4.5080	LINN CNTY 3.3860	LINN CNTY 3.3860	LINN CNTY 3.3860	LINN CNTY 3.3860
SD #55 6.8949	SD #95 BNDS 1.3723	ESD LBL 0.3049	ESD LBL 0.3049	ESD LBL 0.3049	ESD WILL 0.2967
SW HM FIRE/AM 1.5000	SCIO R/F 1.2745	LBCC 0.6777	CHEMEKETA CC 0.7713	CHEMEKETA CC 0.7713	LBCC 0.6777
Total 12.7635	LINN S/WTR 0.0000	SD #95 4.5080	CHEMEKETA LIBR 0.0818	CHEMEKETA LIBR 0.0818	SD #14J 5.1775
	Total 11.5234	SD #95 BNDS 1.3723	CHEMEKETA LIBR 0.0818	SD #127J 4.8880	JEFFSN R/F 1.7955
Code 55-16	Code 95-3	SCIO CTY 4.9057	SD #127J 4.8880	IDANHA CTY 2.5029	JEFF PARK 0.2914
Value \$62,437	Value \$6,911,534	SCIO R/F 1.2745	MIL CTY R/F 2.3149	IDANHA R/F 1.6592	LINN S/WTR 0.0000
LINN CNTY 3.3860	LINN CNTY 3.3860	LINN S/WTR 0.0000	LINN S/WTR 0.0000	LINN S/WTR 0.0000	Total 11.6248
ESD LBL 0.3049	ESD LBL 0.3049	Total 16.4291	Total 11.7469	Total 13.5941	
LBCC 0.6777	SD #95 4.5080	Code 95-11	Code 127-3	Code 127-10	Code 140-17
SD #55 6.8949	SD #95 BNDS 1.3723	Value \$1,500	Value \$22,890,643	Value \$22,194	Value \$3,177,248
MOHAWK R/F 2.5642	LINN S/WTR 0.0000	LINN CNTY 3.3860	LINN CNTY 3.3860	LINN CNTY 3.3860	LINN CNTY 3.3860
LINN S/WTR 13.8277	Total 10.2489	ESD LBL 0.3049	ESD LBL 0.3049	ESD LBL 0.3049	ESD WILL 0.2967
		LBCC 0.6777	CHEMEKETA CC 0.7713	CHEMEKETA CC 0.7713	LBCC 0.6777
Code 55-17	Code 95-4	SD #95 4.5080	CHEMEKETA LIBR 0.0818	CHEMEKETA LIBR 0.0818	SD #14J 5.1775
Value \$107,494	Value \$1,016,634	SD #95 BNDS 1.3723	SD #127J 4.8880	SD #127J 4.8880	JEFFSN R/F 1.7955
LINN CNTY 3.3860	LINN CNTY 3.3860	SCIO CTY 4.9057	LINN S/WTR 0.0000	SD #127J 4.8880	JEFF PARK 0.2914
ESD LBL 0.3049	ESD LBL 0.3049	SCIO R/F 1.2745	Total 9.4320	IDANHA CTY 2.5029	SANTIAM WTR 0.0000
LBCC 0.6777	LBCC 0.6777	LINN S/WTR 0.0000	Code 127-4	LINN S/WTR 0.0000	LINN S/WTR 0.0000
SD #55 6.8949	SD #95 4.5080	Total 16.4291	Value \$10,963,469	Total 11.9349	Total 11.6248
LEBANON R/F 2.2600	SD #95 BNDS 1.3723	Code 95-12	LINN CNTY 3.3860	Code 140-12	Code 140-18
LINN S/WTR 0.0000	SCIO R/F 1.2745	Value \$1,505,064	ESD LBL 0.3049	Value \$291,413	Value \$1,738,958
Total 13.5235	S SANT WTR 1.0044	LINN CNTY 3.3860	CHEMEKETA CC 0.7713	LINN CNTY 3.3860	LINN CNTY 3.3860
	LINN S/WTR 0.0000	ESD LBL 0.3049	CHEMEKETA LIBR 0.0818	ESD WILL 0.2967	ESD WILL 0.2967
Code 55-18	Code 95-7	LBCC 0.6777	SD #127J 4.8880	LBCC 0.6777	LBCC 0.6777
Value \$183,191	Value \$641,474	SD #95 4.5080	LYONS R/F 2.6469	SD #14J 5.1775	SD #14J 5.1775
LINN CNTY 3.3860	LINN CNTY 3.3860	LINN S/WTR 0.0000	LINN S/WTR 0.0000	SCIO R/F 1.2745	JEFFSN R/F 1.7955
ESD LBL 0.3049	ESD LBL 0.3049	Total 12.5278	Total 12.0789	JEFF PARK 0.2914	JEFF PARK 0.2914
LBCC 0.6777	LBCC 0.6777	Code 95-13	Code 127-5	LINN S/WTR 0.0000	S SANT WTR 1.0044
SD #55 6.8949	SD #95 4.5080	Value \$3,140,333	Value \$13,009,024	Total 11.1038	LINN S/WTR 0.0000
LEBANON R/F 2.2600	SD #95 BNDS 1.3723	LINN CNTY 3.3860	LINN CNTY 3.3860	Total 11.1038	LINN S/WTR 0.0000
Total 13.5235	STAYTON R/F 1.4407	ESD LBL 0.3049	ESD LBL 0.3049	Code 140-13	Total 12.6292
	LINN S/WTR 0.0000	LBCC 0.6777	CHEMEKETA CC 0.7713	Value \$25,376	Code 140-19
Code 55-21	Code 95-8	SD #95 4.5080	CHEMEKETA LIBR 0.0818	LINN CNTY 3.3860	Value \$6,862,569
Value \$351,957	Value \$20,713,123	LINN S/WTR 0.0000	SD #127J 4.8880	ESD WILL 0.2967	LINN CNTY 3.3860
LINN CNTY 3.3860	LINN CNTY 3.3860	Total 11.6896	GATES R/F 2.3000	LBCC 0.6777	ESD WILL 0.2967
ESD LBL 0.3049	ESD LBL 0.3049	Code 95-14	LINN S/WTR 0.0000	SD #14J 5.1775	LBCC 0.6777
LBCC 0.6777	LBCC 0.6777	Value \$4,755,017	Total 11.7320	SCIO R/F 1.2745	SD #14J 5.1775
SD #55 6.8949	SD #95 4.5080	LINN CNTY 3.3860	Code 127-7	JEFF PARK 0.2914	JEFFSN R/F 1.7955
SW HM CTY 8.7885	SCIO R/F 1.2745	ESD LBL 0.3049	GATES	S SANT WTR 1.0044	JEFF PARK 0.2914
SW HM CEM 0.2166	LINN S/WTR 0.0000	LBCC 0.6777	Value \$2,653,118	LINN S/WTR 0.0000	DEV/CON WTR 0.1614
LINN S/WTR 0.0000	ESD LBL 0.3049	SD #95 4.5080	LINN CNTY 3.3860	Total 12.1082	LINN S/WTR 0.0000
Total 20.2686	LBCC 0.6777	LINN S/WTR 0.0000	ESD LBL 0.3049	Code 140-14	Total 11.7862
	SD #95 4.5080	Total 10.1511	CHEMEKETA CC 0.7713	Value \$80,048	Code 140-20
Code 55-22	SD #95 BNDS 1.3723	Code 95-15	CHEMEKETA LIBR 0.0818	LINN CNTY 3.3860	Value \$186,265
Value \$0	SCIO R/F 1.2745	Value \$4,755,017	SD #127J 4.8880	ESD WILL 0.2967	LINN CNTY 3.3860
LINN CNTY 3.3860	SANTIAM WTR 0.0000	LINN CNTY 3.3860	GATES R/F 2.3000	LBCC 0.6777	ESD WILL 0.2967
ESD LBL 0.3049	LINN S/WTR 0.0000	ESD LBL 0.3049	Total 11.7320	SD #14J 5.1775	LBCC 0.6777
LBCC 0.6777	Total 11.5234	LBCC 0.6777	Code 127-8	JEFF PARK 0.2914	SD #14J 5.1775
SD #55 6.8949		LYONS R/F 2.6469	Value \$453,910	LINN S/WTR 0.0000	SD #14J 5.1775
SW HM CTY 8.7885		LINN S/WTR 0.0000	LINN CNTY 3.3860	Total 9.8293	MILRSBG CTY 0.0000
SW HM FIRE/AM 1.5000		Total 11.5235	ESD LBL 0.3049		JEFFSN R/F 1.7955
SW HM CEM 0.2166			CHEMEKETA CC 0.7713		JEFF PARK 0.2914
Total 21.7686			CHEMEKETA LIBR 0.0818		LINN S/WTR 0.0000
			SD #127J 4.8880		Total 11.6248
			GATES CTY 0.6314		
			GATES R/F 2.3000		
			LINN S/WTR 0.0000		
			Total 12.3634		

Tax rates are shown in dollars per thousand of taxable value. Rates are before Measure 5 compression.

LINN COUNTY TAX SUMMARY

2003-2004

Code 509-1 Value \$83,827,315 LINN CNTY 3.3860 ESD LBL 0.3049 LBCC 0.6777 SD #509J 5.4317 SD #509J BNDS 1.6898 CORVLS R/F 2.1140 LINN S/WTR 0.0000 Total 13.6041	Code 509-4 Value \$197,789 LINN CNTY 3.3860 ESD LBL 0.3049 LBCC 0.6777 SD #509J 5.4317 SD #509J BNDS 1.6898 TANGENT R/F 2.5739 LINN S/WTR 0.0000 Total 14.0640	Code 552-3 Value \$82,207,826 LINN CNTY 3.3860 ESD LBL 0.3049 LBCC 0.6777 SD #552 5.7156 BRNSVL R/F 1.1985 LINN S/WTR 0.0000 Total 11.2827	Code 552-7 Value \$8,016,782 LINN CNTY 3.3860 ESD LBL 0.3049 LBCC 0.6777 SD #552 5.7156 LINN S/WTR 0.0000 Total 10.0842	Code 552-11 Value \$2,027,603 LINN CNTY 3.3860 ESD LBL 0.3049 LBCC 0.6777 SD #552 5.7156 HARSBRG R/F 1.1299 LTL MUD WTR 0.0000 LINN S/WTR 0.0000 Total 11.2141	Code 552-15 Value \$130,721 LINN CNTY 3.3860 ESD LBL 0.3049 LBCC 0.6777 SD #552 5.7156 OAKV C/CNTR 0.0000 LINN S/WTR 0.0000 Total 10.0842
Code 509-2 Value \$561,323 LINN CNTY 3.3860 ESD LBL 0.3049 LBCC 0.6777 SD #509J 5.4317 SD #509J BNDS 1.6898 LINN S/WTR 0.0000 Total 11.4901	Code 509-5 Value \$236,923 LINN CNTY 3.3860 ESD LBL 0.3049 LBCC 0.6777 SD #509J 5.4317 SD #509J BNDS 1.6898 HLY/SHD R/F 0.9894 LINN S/WTR 0.0000 Total 12.4795	Code 552-4 Value \$93,489,561 LINN CNTY 3.3860 ESD LBL 0.3049 LBCC 0.6777 SD #552 5.7156 HLY/SHD R/F 0.9894 LINN S/WTR 0.0000 Total 11.0736	Code 552-8 Value \$369,408 LINN CNTY 3.3860 ESD LBL 0.3049 LBCC 0.6777 SD #552 5.7156 SW HM FIRE/AM 1.5000 LINN S/WTR 0.0000 Total 11.5842	Code 552-12 BROWNVILLE Value \$27,133,177 LINN CNTY 3.3860 ESD LBL 0.3049 LBCC 0.6777 SD #552 5.7156 HALSEY CTY 8.1920 HLY/SHD R/F 0.9894 LINN S/WTR 0.0000 Total 19.2656	Code 552-19 BROWNVILLE Value \$52,438,169 LINN CNTY 3.3860 ESD LBL 0.3049 LBCC 0.6777 SD #552 5.7156 BRNSVL CTY 7.9732 BRNSVL R/F 1.1985 LINN S/WTR 0.0000 Total 19.2559
Code 509-3 Value \$6,414,995 LINN CNTY 3.3860 ESD LBL 0.3049 LBCC 0.6777 SD #509J 5.4317 SD #509J BNDS 1.6898 ALBANY R/F 2.1500 LINN S/WTR 0.0000 Total 13.6041	Code 552-2 Value \$3,639,990 LINN CNTY 3.3860 ESD LBL 0.3049 LBCC 0.6777 SD #552 5.7156 TANGENT R/F 2.5739 LINN S/WTR 0.0000 Total 18.2762	Code 552-5 Value \$4,236,432 LINN CNTY 3.3860 ESD LBL 0.3049 LBCC 0.6777 SD #552 5.7156 HLY/SHD R/F 0.9894 LINN S/WTR 0.0000 Total 12.6581	Code 552-9 Value \$194,136 LINN CNTY 3.3860 ESD LBL 0.3049 LBCC 0.6777 SD #552 5.7156 LTL MUD WTR 0.0000 LINN S/WTR 0.0000 Total 10.0842	Code 552-14 Value \$4,729,580 LINN CNTY 3.3860 ESD LBL 0.3049 LBCC 0.6777 SD #552 5.7156 HLY/SHD R/F 0.9894 OAKV C/CNTR 0.0000 LINN S/WTR 0.0000 Total 11.0736	Code 552-20 Value \$211,158,367 LINN CNTY 3.3860 ESD LBL 0.3049 LBCC 0.6777 SD #552 5.7156 HLY/SHD R/F 0.9894 LINN S/WTR 0.0000 EM PUD 0.0000 Total 11.0736
Code 552-6 Value \$1,562,263 LINN CNTY 3.3860 ESD LBL 0.3049 LBCC 0.6777 SD #552 5.7156 HARSBRG R/F 1.1299 LINN S/WTR 0.0000 Total 11.2141	Code 552-10 Value \$7,820,213 LINN CNTY 3.3860 ESD LBL 0.3049 LBCC 0.6777 SD #552 5.7156 HLY/SHD R/F 0.9894 LTL MUD WTR 0.0000 LINN S/WTR 0.0000 Total 11.0736				

Tax rates are shown in dollars per thousand of taxable value. Rates are before Measure 5 compression.

~ District Abbreviations ~

ALBANY CTY	Albany City	JEFF PARK	Jefferson Park Rec. Dist.	SCIO CTY	Scio City
ALBANY R/F	Albany Rural Fire Dist.	JEFFSN R/F	Jefferson Rural Fire Dist.	SCIO R/F	Scio Rural Fire Dist.
ALBANY UR	Albany Urban Renewal	LANE CM COL	Lane Community College	SD #127J	Santiam Canyon School Dist
BRNSVL CTY	Brownsville City	LBCC	Linn-Benton Community College	SD #14J	Jefferson School Dist.
BRNSVL R/F	Brownsville Rural Fire Dist.	LEB AQUA CNTR	Lebanon Aquatic Center	SD #27J	North Santiam School Dist
CHEM CM COL	Chemeketa Community College	LEB UR I	Lebanon Urban Renewal I	SD #4J	Eugene School Dist.
CHEM LIBRARY	Chemeketa CC Library	LEB UR II	Lebanon Urban Renewal II	SD #509J	Corvallis School Dist.
CORVLS R/F	Corvallis Rural Fire Dist.	LEB UR III	Lebanon Urban Renewal III	SD #509J BNDS	Corvallis School Dist. Bonds
DEV/CON WTR	Dever Conner Water Dist.	LEBANON CTY	Lebanon City	SD #55	Sweet Home School Dist.
EM PUD	Emerald Peoples Util. Dist.	LEBANON R/F	Lebanon Rural Fire Dist.	SD #552	Central Linn School Dist.
ESD LANE	Lane Ed Serv Dist	LINN CNTY	Linn County	SD #7	Harrisburg School Dist.
ESD LBL	Linn Benton Lincoln ESD	LINN S/WTR	Linn Soil & Water Conserv. Dist.	SD #79J	Marcola School Dist.
ESD WILL	Willamette Reginal ESD	LTL MUD WTR	Little Muddy Creek Water Dist	SD #8J	Albany School Dist.
GATES CTY	Gates City	LY/MEH WTR	Lyons/Mehama Water Dist.	SD #9	Lebanon Community School Dist.
GATES R/F	Gates Rural Fire Dist.	LYONS CTY	Lyons City	SD #95	Scio School Dist.
GP WTR	Grand Prairie Water Control Dist.	LYONS R/F	Lyons Rural Fire Dist.	SD #95 Bonds	Scio School Dist. Bonds
GP WTR #2	Grand Prairie Water Control Dist. #2	MIL CTY R/F	Mill City Rural Fire Dist.	SODAVLE CTY	Sodaville City
HALSEY CTY	Halsey City	MILL CTY	Mill City	STAYTON R/F	Stayton Rural Fire Dist.
HARSBG CTY	Harrisburg City	MILRSBG CTY	Millersburg City	SW HM CEM	Sweet Home Cemetery Dist.
HARSBRG R/F	Harrisburg Rural Fire Dist.	MOHAWK R/F	Mohawk Valley Rural Fire Dist.	SW HM CTY	Sweet Home City
HLY/SHD R/F	Halsey/Shed Rural Fire Dist.	N LEB WTR	North Lebanon Water Dist.	SW HM FIRE/AM	Sweet Home Fire & Ambulance Dist
HRSBRG UR	Harrisburg Urban Renewal	OAK C/CNTR	Oak Creek Community Center Dist.	TANGENT CTY	Tangent City
IDANHA CTY	Idanha City	S SANT WTR	South Santiam Water Dist.	TANGENT R/F	Tangent Rural Fire Dist.
IDANHA R/F	Idanha Rural Fire Dist.	SANTIAM WTR	Santiam Water Dist.	WTRLOO CTY	Waterloo City

This summary is designed to provide information about the current Assessment and Tax Roll. More detailed or specific information is available from our office, located in room 215 of the County Courthouse at 300 4th Ave SW in Albany.

If you have questions concerning property you own or more general questions about the property tax system, you are welcome to discuss your situation with a member of our staff. If you are eligible for a program to help reduce your property taxes, we will gladly help in any way we can.

Ad valorem taxes are based on the assessed value of your property as of January 1st. Those taxes provide funds for the operation of schools, cities, fire districts, and other miscellaneous taxing districts.

The Assessor does not tax, but values your property through methods prescribed by state law and regulation. The Assessor does not determine the amount of money your taxing district receives. To control spending, you should take an active interest in local budget meetings and elections. You are, in effect, purchasing services with your tax dollars.

Taxes are due and payable in three installments. The first third is due on November 15th, the second third on February 15th, and the final third on May 15th. A three percent discount will be allowed on taxes paid in full on or before November 15th. A two percent discount will be allowed if two-thirds of the total taxes are paid on or before November 15th. No discount will be allowed on taxes paid after November 15th. Interest at a rate of 1-1/3% per month or fraction of a month will be charged on any payment made after the installment due date.

By law this office must credit your property tax payments to the earliest year for which taxes are due on your property. In order to receive a discount on your current year's bill, all prior year's taxes, penalties and interest must first be fully paid.

I, Mark Noakes, Linn County Assessor/Tax Collector, State of Oregon, do hereby certify that the assessed valuations, tax levies and taxes set forth herein contained, are true and correct copies of the originals, as the same appears on file in my office and custody.

Mark Noakes
Linn County Assessor/Tax Collector

**Visit the Linn County web site at
www.co.linn.or.us**

Location: Linn County Courthouse, Room 215
Mailing Address: Linn County Assessment & Taxation
PO Box 100
Albany OR 97321
Phone: (541) 967-3808