

•••• 2004-2005 ••••

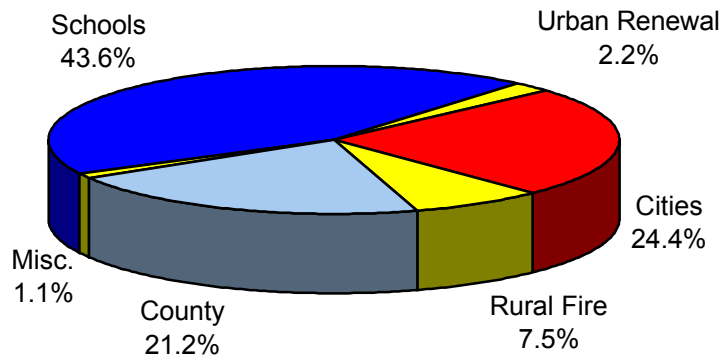
SUMMARY OF ASSESSMENT AND TAX ROLL - LINN COUNTY, OREGON

VALUATION for Tax Year beginning July 1, 2004

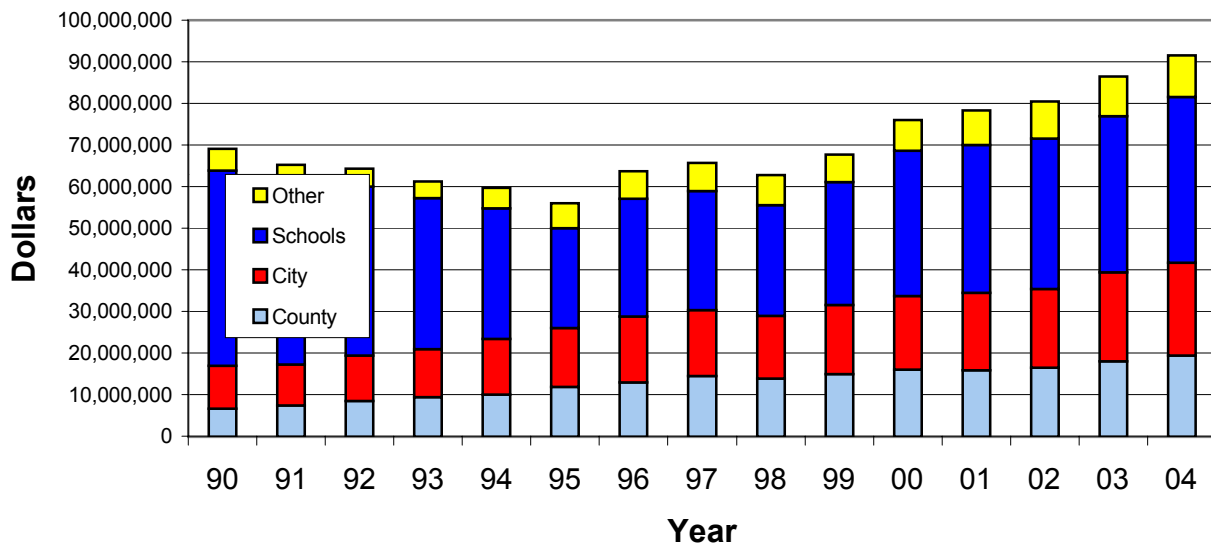
	Measure 5 Value	Assessed Value	Veteran's Exemption	Taxable Value
Real Property	6,809,243,750	5,455,301,349	13,067,777	5,442,233,572
Manufactured Structures	137,146,030	117,419,615	1,553,516	115,866,099
Personal Property	193,135,235	193,135,235		193,135,235
Public Utilities	241,544,746	238,210,607		238,210,607
Total	7,381,069,761	6,004,066,806	14,621,293	5,989,445,513

Measure 5 Value (M5V) is the Real Market Value (RMV) adjusted for special assessments.
 Assessed Value (AV) is the lesser of M5V and the Measure 50 Maximum Assessed Value (MAV).
 Taxable Value is Assessed Value less Veteran's Exemption.

DISTRIBUTION of TAX DOLLARS



TAX DOLLARS by YEAR



Schools includes Community Colleges and Education Service Districts.

ASSESSMENT & TAXES by DISTRICT

	MEASURE 5 VALUE	TAXABLE VALUE	LESS URBAN RENEWAL	TOTAL VALUE TO COMPUTE TAX RATES	MAXIMUM TAX RATE	TAXES IMPOSED
COUNTY	7,366,448,468	5,989,445,513	93,224,674	5,896,220,839	3.4280	19,409,742.48
CITIES						
Albany	2,333,811,851	1,947,576,161	34,121,937	1,913,454,224	8.0355	15,529,461.33
Brnsvl	82,114,339	55,728,892		55,728,892	8.0050	446,096.41
Gates	3,447,920	2,719,415		2,719,415	0.5999	1,631.41
Halsey	42,547,454	31,881,556		31,881,556	7.9703	254,105.58
Harrisbrg	147,977,603	112,035,336	8,742,841	103,292,495	4.3782	490,513.06
Idanha	2,450,020	2,149,881		2,149,881	2.5029	5,380.94
Lebanon	686,460,213	559,895,304	47,656,384	512,238,920	5.5507	3,074,914.22
Lyons	65,196,224	48,872,195		48,872,195	2.9156	142,491.64
Mill City	58,594,936	43,749,990		43,749,990	4.1578	181,903.77
Millrsbrg	413,753,641	373,834,229		373,834,229	0.0000	0.00
Scio	33,588,164	25,243,326		25,243,326	4.9057	123,836.05
Sodaville	13,612,750	10,808,243		10,808,243	0.4080	4,409.73
Swt Home	343,948,620	265,523,918		265,523,918	8.7011	2,035,446.09
Tangent	114,506,818	84,429,701		84,429,701	0.0000	0.00
Waterloo	8,846,740	6,474,849		6,474,849	0.0000	0.00
TOTAL						22,290,190.23
RURAL FIRE PROTECTION DISTRICTS						
Albany	600,385,405	531,318,654		531,318,654	2.1500	1,142,332.99
Brnsvl	197,444,324	147,927,693		147,927,693	1.1985	177,288.13
Corvls	125,923,419	99,993,392		99,993,392	2.1140	211,385.26
Gates	22,413,320	16,164,625		16,164,625	2.3000	37,178.62
Hly/Shd	418,093,028	375,473,758		375,473,758	0.9894	371,493.52
Harrisbrg	291,051,092	225,821,654	8,742,841	217,078,813	1.1299	245,287.15
Idanha	2,953,360	2,586,967		2,586,967	1.6592	4,292.32
Jefferson	221,904,170	164,686,851		164,686,851	1.7955	310,059.07
Lebanon	1,395,338,797	1,112,826,310	50,359,896	1,062,466,414	2.2600	2,386,822.50
Lyons	145,339,698	111,661,105		111,661,105	2.5965	289,927.87
Mill City	85,833,494	65,504,954		65,504,954	1.9348	126,739.04
Scio	295,896,349	233,842,728		233,842,728	1.2745	298,031.87
Stayton	82,307,124	63,845,309		63,845,309	1.4345	91,585.94
Swt Home	655,898,499	490,587,141		490,587,141	1.5000	735,882.08
Mohawk	87,340	65,364		65,364	2.5126	164.24
Tangent	230,410,292	175,928,053		175,928,053	2.5739	452,820.37
TOTAL						6,881,290.97
SCHOOL DISTRICTS						
SD 4J	10,624,160	7,826,125		7,826,125	7.2819	53,619.86
SD 7J	283,528,980	220,261,949	8,742,841	211,519,108	6.8023	1,425,250.17
SD 8J	3,423,496,906	2,857,723,346	34,121,937	2,823,601,409	4.9623	13,773,850.50
SD 9	1,504,343,597	1,197,609,941	50,359,896	1,147,250,045	7.9499	8,983,963.35
SD 14J	24,707,905	20,250,945		20,250,945	5.1650	101,593.80
SD 27J	214,987,706	166,554,899		166,554,899	5.6483	934,042.69
SD 55	771,782,311	587,515,325		587,515,325	6.9290	3,985,324.18
SD 79J	58,760	52,973		52,973	4.6687	247.32
SD 95	235,459,177	187,664,269		187,664,269	4.5080	837,707.59
SD 95 Bnds	223,614,967	177,765,623		177,765,623	1.3163	233,992.90
SD 127J	158,075,246	120,083,097		120,083,097	4.8880	571,419.57
SD 509J	134,621,760	107,792,278		107,792,278	7.0431	722,652.05
SD 552	604,761,960	516,110,366		516,110,366	4.8769	2,417,753.32
TOTAL						34,041,417.30

LINN COUNTY TAX SUMMARY

2004-2005

	MEASURE 5 VALUE	TAXABLE VALUE	LESS URBAN RENEWAL	TOTAL VALUE TO COMPUTE TAX RATES	MAXIMUM TAX RATE	TAXES IMPOSED
EDUCATIONAL SERVICE DISTRICTS						
LBL	7,116,069,937	5,794,760,571	93,224,674	5,701,535,897	0.3049	1,699,619.25
Wil Reg	239,695,611	186,805,844		186,805,844	0.2967	54,788.84
Lane	10,682,920	7,879,098		7,879,098	0.2232	1,757.99
TOTAL						1,756,166.08
COMMUNITY COLLEGES						
Lane CC	294,211,900	228,141,047	8,742,841	219,398,206	0.8850	192,366.85
LBCC	6,783,660,093	5,540,389,058	84,481,833	5,455,907,225	0.6805	3,652,480.89
Chemeketa	288,576,475	220,915,408		220,915,408	0.9649	210,363.36
Chem Lib	288,576,475	220,915,408		220,915,408	0.0818	18,070.69
TOTAL						4,073,281.79
MISCELLANEOUS DISTRICTS						
Leb Aqua Cntr	1,504,343,597	1,197,609,941	50,359,896	1,147,250,045	0.2400	273,860.49
Jef Pk Rec	24,909,585	20,442,778		20,442,778	0.2914	5,957.01
Sw Hm Cem	555,565,765	416,606,319		416,606,319	0.2166	90,236.82
Dev/Con Wtr	15,532,376	12,878,588		12,878,588	0.1614	2,078.63
Ly/Meh Wtr	83,972,531	64,564,773		64,564,773	0.9849	63,589.76
N Leb Wtr	71,519,781	57,562,902		57,562,902	0.1420	8,171.54
S Sant Wtr	11,120,660	8,941,219		8,941,219	1.0044	8,980.58
TOTAL						452,874.83
URBAN RENEWAL DISTRICTS						
Albany	2,333,811,851	1,947,576,161		1,947,576,161	0.2650	509,747.65
Harrisburg	147,986,803	112,044,536		112,044,536	1.4817	166,010.66
Lebanon I	686,474,883	559,907,722		559,907,722	0.7357	406,768.78
Lebanon II	689,451,784	562,227,597		562,227,597	1.5645	867,835.09
Lebanon III	698,992,583	570,242,840		570,242,840	0.1642	87,462.64
TOTAL						2,037,824.82

SPECIAL ASSESSMENTS

			Forest Patrol	97,587.73
			Forest Patrol Surcharge	81,244.00
			Little Muddy Creek Water Control	6,697.96
			Fertile District Imp Co	662.61
			Grand Prairie	10,519.22
			Grand Prairie Water Control Sub II	152,550.54
			Mobile Home Ombudsman Fee	28,521.98
			Additional Farmland Tax	6,717.96
			Additional Forestland Tax	13,454.11
			Delinquent Sewer	49,828.15
			TOTAL	447,784.26
			Corrections	64,798.25
			Late Filing Penalties	53,996.74

TOTAL IMPOSED AD VALOREM TAXES AND ASSESSMENTS 91,509,367.75

IMPOSED AD VALOREM TAX BY PROPERTY TYPE

REAL PROPERTY	83,669,737.47
PERSONAL PROPERTY	2,817,808.36
MANUFACTURED STRUCTURES	1,732,652.62
UTILITIES	3,289,169.30
TOTAL	91,509,367.75

LINN COUNTY TAX SUMMARY

2004-2005

Code 7-1	Code 7-8	Code 8-2	Code 8-9	Code 8-17	Code 8-23
HARRISBURG	Value \$12,344,106	Value \$102,439,388	Value \$76,350,450	Value \$16,869,750	Value \$2,488,127
Value \$99,659,530	LINN CNTY 3.3198	LINN CNTY 3.4280	LINN CNTY 3.4280	LINN CNTY 3.4280	LINN CNTY 3.4280
LINN CNTY 3.3198	ESD LBL 0.2812	ESD LBL 0.3049	ESD LBL 0.3049	ESD LBL 0.3049	ESD LBL 0.3049
ESD LBL 0.2812	LANE COM COL 0.8160	LBCC 0.6805	LBCC 0.6805	LBCC 0.6805	LBCC 0.6805
LANE COM COL 0.8160	SD #7 6.2716	SD #8J 4.9623	SD #8J 4.9623	SD #8J 4.9623	SD #8J 4.9623
SD #7 6.2716	HARRSBG CTY 4.3782	ALBANY R/F 2.1500	JEFFSN R/F 1.7955	SCIO R/F 1.2745	LEBANON R/F 2.2600
HARRSBG CTY 4.3782	HARRSBG R/F 1.0418	LINN S/WTR 0.0000	LINN S/WTR 0.0000	LINN S/WTR 0.0000	N LEB WTR 0.1420
HARRSBG R/F 1.0418	LINN S/WTR 0.0000	Total 11.5257	Total 11.1712	Total 10.6502	LINN S/WTR 0.0000
LINN S/WTR 0.0000	HRSBRG UR 1.4817				Total 11.7777
HRSBRG UR 1.4817	Total 17.5903	Code 8-3	Code 8-10	Code 8-18	Code 8-24
Total 17.5903	Value \$15,455,333	Value \$3,605,068	Value \$6,005,678	Value \$1,761,371	Value \$4,094,535
Code 7-2	Value \$59,982,459	LINN CNTY 3.4280	LINN CNTY 3.4280	LINN CNTY 3.4280	Value \$4,094,535
Value \$59,982,459	LINN CNTY 3.4280	ESD LBL 0.3049	ESD LBL 0.3049	ESD LBL 0.3049	LINN CNTY 3.4280
LINN CNTY 3.4280	ESD LBL 0.3049	LBCC 0.6805	LBCC 0.6805	LBCC 0.6805	ESD LBL 0.3049
ESD LBL 0.3049	LANE COM COL 0.8850	SD #8J 4.9623	SD #8J 4.9623	SD #8J 4.9623	LBCC 0.6805
LANE COM COL 0.8850	SD #7 6.8023	LINN S/WTR 0.0000	JEFFSN R/F 1.7955	ALBANY R/F 2.1500	SD #8J 4.9623
SD #7 6.8023	HARRSBG R/F 1.1299	Total 9.3757	DEV/CON WTR 0.1614	S SANT WTR 1.0044	JEFFSN R/F 1.7955
HARRSBG R/F 1.1299	LINN S/WTR 0.0000	Code 8-4	LINN S/WTR 0.0000	LINN S/WTR 0.0000	S SANT WTR 1.0044
LINN S/WTR 0.0000	Total 12.5501	Value \$37,846,500	Total 11.3326	Total 12.5301	LINN S/WTR 0.0000
Total 12.5501	Code 7-10	LINN CNTY 3.4280	Code 8-11	Code 8-19	Total 12.1756
Code 7-3	Value \$49,072	ESD LBL 0.3049	TANGENT	Value \$307,212	Code 8-25
Value \$353,284	LINN CNTY 3.4280	LBCC 0.6805	Value \$84,078,372	LINN CNTY 3.4280	Value \$3,805,991
LINN CNTY 3.4280	ESD LBL 0.3049	SD #8J 4.9623	LINN CNTY 3.4280	ESD LBL 0.3049	LINN CNTY 3.4280
ESD LBL 0.3049	LANE COM COL 0.8850	ALBANY R/F 2.1500	ESD LBL 0.3049	LBCC 0.6805	ESD LBL 0.3049
LANE COM COL 0.8850	SD #7 6.8023	GP WTR 0.0000	LBCC 0.6805	SD #8J 4.9623	LBCC 0.6805
SD #7 6.8023	HARRSBG R/F 1.1299	LINN S/WTR 0.0000	SD #8J 4.9623	SCIO R/F 1.2745	SD #8J 4.9623
BRNSVL R/F 1.1985	LTL MUD WTR 0.0000	Total 11.5257	TANGENT CTY 0.0000	S SANT WTR 1.0044	JEFFSN R/F 1.7955
LINN S/WTR 0.0000	LINN S/WTR 0.0000	Code 8-5	TANGENT R/F 2.5739	GP WTR 0.0000	GP WTR 0.0000
Total 12.6187	Total 12.5501	Value \$306,708,134	LINN S/WTR 0.0000	Total 11.6546	LINN S/WTR 0.0000
Code 7-4	Code 7-11	MILLERSBURG	Total 11.9496	Code 8-20	Code 8-26
Value \$967,046	Value \$9,200	LINN CNTY 3.4280	Code 8-13	Value \$1,894,855	Value \$65,197,439
LINN CNTY 3.4280	LINN CNTY 3.3198	ESD LBL 0.3049	Value \$351,329	LINN CNTY 3.4280	Value \$65,197,439
ESD LBL 0.3049	ESD LBL 0.2812	LBCC 0.6805	LINN CNTY 3.4280	ESD LBL 0.3049	LINN CNTY 3.4280
LANE COM COL 0.8850	LANE COM COL 0.8160	SD #8J 4.9623	ESD LBL 0.3049	LBCC 0.6805	ESD LBL 0.3049
SD #7 6.8023	SD #7 6.2716	MILRSBG CTY 0.0000	LBCC 0.6805	SD #8J 4.9623	LBCC 0.6805
HLV/SHD R/F 0.9894	HARRSBG R/F 1.0418	ALBANY R/F 2.1500	SD #8J 4.9623	SCIO R/F 1.2745	SD #8J 4.9623
LINN S/WTR 0.0000	LINN S/WTR 0.0000	LINN S/WTR 0.0000	TANGENT CTY 0.0000	N LEB WTR 0.1420	ALBANY R/F 2.1500
Total 12.4096	HRSBRG UR 1.1112	Total 11.5257	LINN S/WTR 0.0000	LINN S/WTR 0.0000	GP WTR #2 0.0000
Code 7-5	Total 12.8416	Code 8-6	Total 9.3757	Total 10.7922	LINN S/WTR 0.0000
Value \$4,249,131	Code 7-12	Value \$1,653,282	Code 8-14	Code 8-21	Total 11.5257
LINN CNTY 3.4280	Value \$31,700	LINN CNTY 3.4280	Value \$1,585,261	Value \$7,442,591	Code 8-27
ESD LBL 0.3049	LINN CNTY 3.3198	ESD LBL 0.3049	LINN CNTY 3.4280	LINN CNTY 3.4280	Value \$136,879,003
LANE COM COL 0.8850	ESD LBL 0.2812	LBCC 0.6805	ESD LBL 0.3049	ESD LBL 0.3049	LINN CNTY 3.3680
SD #7 6.8023	LANE COM COL 0.8160	SD #8J 4.9623	LBCC 0.6805	LBCC 0.6805	ESD LBL 0.3005
LINN S/WTR 0.0000	SD #7 6.2716	MILRSBG CTY 0.0000	SD #8J 4.9623	SD #8J 4.9623	LBCC 0.6706
Total 11.4202	HARRSBG CTY 4.3782	LINN S/WTR 0.0000	HLV/SHD R/F 0.9894	ALBANY R/F 2.1500	SD #8J 4.8902
Code 7-6	LINN S/WTR 0.0000	Total 9.3757	LINN S/WTR 0.0000	N LEB WTR 0.1420	ALBANY CTY 8.0355
Value \$564,043	HRSBRG UR 1.3936	Code 8-7	Total 10.3651	GP WTR 0.0000	GP WTR 0.0000
LINN CNTY 3.4280	Total 16.4604	Value \$65,059,031	Code 8-15	LINN S/WTR 0.0000	LINN S/WTR 0.0000
ESD LBL 0.3049	Code 8-1	LINN CNTY 3.4280	Value \$460,039	Total 11.6677	ALBANY UR 0.2650
LANE COM COL 0.8850	ALBANY	ESD LBL 0.3049	LINN CNTY 3.4280	Code 8-22	Total 17.5298
SD #7 6.8023	Value \$1,491,411,027	LBCC 0.6805	ESD LBL 0.3049	Value \$48,142	Code 8-28
LTL MUD WTR 0.0000	LINN CNTY 3.3680	SD #8J 4.9623	LBCC 0.6805	LINN CNTY 3.4280	Value \$1,463,484
LINN S/WTR 0.0000	ESD LBL 0.3005	MILRSBG CTY 0.0000	SD #8J 4.9623	ESD LBL 0.3049	Value \$1,463,484
Total 11.4202	LBCC 0.6706	JEFFSN R/F 1.7955	LEBANON R/F 2.2600	LBCC 0.6805	LINN CNTY 3.4280
Code 7-7	SD #8J 4.8902	LINN S/WTR 0.0000	LINN S/WTR 0.0000	SD #8J 4.9623	ESD LBL 0.3049
Value \$26,597,045	ALBANY CTY 8.0355	Total 11.1712	Total 11.6357	N LEB WTR 0.1420	LBCC 0.6805
LINN CNTY 3.4280	LINN S/WTR 0.0000	Code 8-8	Code 8-16	LINN S/WTR 0.0000	SD #8J 4.9623
ESD LBL 0.3049	ALBANY UR 0.2650	Value \$77,783,592	Value \$10,488,062	Total 9.5177	TANGENT R/F 2.5739
LANE COM COL 0.8850	Total 17.5298	LINN CNTY 3.4280	LINN CNTY 3.4280	GP WTR #2 0.0000	GP WTR #2 0.0000
SD #7 6.8023		ESD LBL 0.3049	ESD LBL 0.3049	LINN S/WTR 0.0000	LINN S/WTR 0.0000
HARRSBG R/F 1.1299		LBCC 0.6805	LBCC 0.6805	Total 11.9496	Total 11.9496
LTL MUD WTR 0.0000		SD #8J 4.9623	SD #8J 4.9623		
LINN S/WTR 0.0000		TANGENT R/F 2.5739	CORVLS R/F 2.1140		
Total 12.5501		LINN S/WTR 0.0000	LINN S/WTR 0.0000		
		Total 11.9496	Total 11.4897		

Tax rates are shown in dollars per thousand of taxable value. Rates are before Measure 5 compression.

LINN COUNTY TAX SUMMARY

2004-2005

Code 8-29	Code 8-39	Code 9-3	Code 9-12	Code 9-17	Code 9-22
Value \$5,193,476	Value \$404,997	Value \$21,977,969	Value \$7,251,046	Value \$12,934,195	Value \$70,095
LINN CNTY 3.4280	LINN CNTY 3.3680	LINN CNTY 3.4280	LINN CNTY 3.2869	LINN CNTY 3.2869	LINN CNTY 3.2869
ESD LBL 0.3049	ESD LBL 0.3005	ESD LBL 0.3049	ESD LBL 0.2777	ESD LBL 0.2777	ESD LBL 0.2777
LBCC 0.6805	LBCC 0.6706	LBCC 0.6805	LBCC 0.6198	LBCC 0.6198	LBCC 0.6198
SD #8J 4.9623	SD #8J 4.8902	SD #9 7.9499	SD #9 7.2383	SD #9 7.2383	SD #9 7.2383
TANGENT R/F 2.5739	ALBANY CTY 8.0355	LINN S/WTR 0.0000	LEBANON CTY 5.5507	LEBANON CTY 5.5507	LEBANON CTY 5.5507
GP WTR 0.0000	ALBANY R/F 2.1500	LEB AQUA CNTR 0.2400	LEBANON R/F 2.0577	LEBANON R/F 2.0577	LEBANON R/F 2.0577
LINN S/WTR 0.0000	GP WTR #2 0.0000	Total 12.6033	LINN S/WTR 0.0000	GP WTR #2 0.0000	N LEB WTR 0.1420
Total 11.9496	LINN S/WTR 0.0000	Code 9-4	LEB AQUA CNTR 0.2186	LINN S/WTR 0.0000	LEB AQUA CNTR 0.2186
	ALBANY UR 0.2650	SODAVILLE	LEB UR I 0.7357	LEB AQUA CNTR 0.2186	LEB UR I 0.2186
	Total 19.6798	Value \$8,922,942	LEB UR II 1.5645	LEB UR I 0.7357	LEB UR II 1.5645
Code 8-30		LINN CNTY 3.4280	LEB UR III 0.1642	LEB UR II 1.5645	LEB UR III 0.1642
Value \$41,909,999		ESD LBL 0.3049	Total 21.7141	LEB UR III 0.1642	Total 21.8561
LINN CNTY 3.3680	Code 8-40	LBCC 0.6805		Total 21.7141	
ESD LBL 0.3005	Value \$34,604	SD #9 7.9499	Code 9-13		
LBCC 0.6706	LINN CNTY 3.4280	SODAVLE CTY 0.4080	Value \$12,418	Code 9-18	Value \$71,117
SD #8J 4.8902	ESD LBL 0.3049	LEBANON R/F 2.2600	LINN CNTY 3.3980	Value \$17,538,480	LINN CNTY 3.2869
ALBANY CTY 8.0355	LBCC 0.6805	LINN S/WTR 0.0000	ESD LBL 0.2983	LINN CNTY 3.4280	ESD LBL 0.2777
GP WTR #2 0.0000	SD #8J 4.9623	LEB AQUA CNTR 0.2400	LBCC 0.6659	ESD LBL 0.3049	LBCC 0.6198
LINN S/WTR 0.0000	MILRSBG CTY 0.0000	Total 15.2713	SD #9 7.7776	LBCC 0.6805	SD #9 7.2383
ALBANY UR 0.2650	ALBANY R/F 2.1500		LEBANON R/F 2.2110	SD #9 7.9499	LEBANON CTY 5.5507
Total 17.5298	GP WTR 0.0000	Code 9-5	LINN S/WTR 0.0000	LEBANON R/F 2.2600	LINN S/WTR 0.0000
	LINN S/WTR 0.0000	LEBANON	LEB AQUA CNTR 0.2348	LEB AQUA CNTR 0.2400	LEB AQUA CNTR 0.2186
	Total 11.5257	Value \$423,312,300	LEB UR I 0.6044	Total 14.8633	LEB UR I 0.6867
Code 8-33		LINN CNTY 3.2869	Total 15.1900		LEB UR II 1.4302
Value \$687,363	Code 8-42	ESD LBL 0.2777		Code 9-19	LEB UR III 0.1452
LINN CNTY 3.4280	Value \$191,833	LBCC 0.6198	Code 9-14	Value \$652,967	Total 19.4541
ESD LBL 0.3049	LINN CNTY 3.4280	SD #9 7.2383	Value \$12,600,219	LINN CNTY 3.4280	
LBCC 0.6805	ESD LBL 0.3049	LEBANON CTY 5.5507	LINN CNTY 3.4280	ESD LBL 0.3049	Code 9-24
SD #8J 4.9623	LBCC 0.6805	LEBANON R/F 2.0577	ESD LBL 0.3049	LBCC 0.6805	Value \$16,999
TANGENT R/F 2.5739	SD #8J 4.9623	LINN S/WTR 0.0000	LBCC 0.6805	SD #9 7.9499	LINN CNTY 3.2869
OAKV C/CNTR 0.0000	MILRSBG CTY 0.0000	LEB AQUA CNTR 0.2186	SD #9 7.9499	LEB AQUA CNTR 0.2400	ESD LBL 0.2777
LINN S/WTR 0.0000	JEFFSN R/F 1.7955	LEB UR I 0.7357	LEBANON R/F 2.2600	Total 12.6033	LBCC 0.6198
Total 11.9496	JEFF PARK 0.2914	LEB UR II 1.5645	GP WTR #2 0.0000		SD #9 7.2383
	LINN S/WTR 0.0000	LEB UR III 0.1642	LINN S/WTR 0.0000	Code 9-20	LEBANON CTY 5.5507
Code 8-34	Total 11.4626	Total 21.7141	LEB AQUA CNTR 0.2400	Value \$263,014	LEB AQUA CNTR 0.2186
Value \$19,609,699	Code 8-46		Total 14.8633	LINN CNTY 3.4280	LEB UR I 0.6867
LINN CNTY 3.4280	Value \$276,971,135	Code 9-7		ESD LBL 0.3049	LEB UR II 1.4302
ESD LBL 0.3049	LINN CNTY 3.3680	Value \$3,700,255	Code 9-15	LBCC 0.6805	LEB UR III 0.1452
LBCC 0.6805	ESD LBL 0.3005	LINN CNTY 3.4280	Value \$184,691	SD #9 7.9499	Total 19.4541
SD #8J 4.9623	LBCC 0.6706	ESD LBL 0.3049	LINN CNTY 3.2869	LEBANON R/F 2.2600	
HLV/SHD R/F 0.9894	SD #8J 4.8902	LBCC 0.6805	ESD LBL 0.2777	N LEB WTR 0.1420	Code 9-25
OAKV C/CNTR 0.0000	ALBANY CTY 8.0355	SD #9 7.9499	LBCC 0.6198	LEB AQUA CNTR 0.2400	Value \$38,976,535
LINN S/WTR 0.0000	LINN S/WTR 0.0000	LEBANON R/F 2.2600	SD #9 7.2383	Total 15.0053	LINN CNTY 3.2869
Total 10.3651	ALBANY UR 0.2650	N LEB WTR 0.1420	LEBANON CTY 5.5507		ESD LBL 0.2777
	Total 17.5298	LINN S/WTR 0.0000	LEBANON R/F 2.0577	Code 9-21	LBCC 0.6198
Code 8-35		LEB AQUA CNTR 0.2400	LINN S/WTR 0.0000	Value \$1,446,221	SD #9 7.2383
Value \$4,187,927	Code 9-1	Total 15.0053	LEB AQUA CNTR 0.2186	LINN CNTY 3.2869	LEBANON CTY 5.5507
LINN CNTY 3.4280	Value \$1,885,301		LEB UR I 0.7357	ESD LBL 0.2777	LEBANON R/F 2.0577
ESD LBL 0.3049	LINN CNTY 3.4280	Code 9-8	LEB UR II 1.5645	LBCC 0.6198	LINN S/WTR 0.0000
LBCC 0.6805	ESD LBL 0.3049	Value \$14,118,841	LEB UR III 0.1642	SD #9 7.2383	LEB AQUA CNTR 0.2186
SD #8J 4.9623	LBCC 0.6805	LINN CNTY 3.4280	Total 21.7141	LEBANON CTY 5.5507	LEB UR I 0.7357
CORVLS R/F 2.1140	SD #9 7.9499	ESD LBL 0.3049		LEBANON R/F 2.0577	LEB UR II 1.5645
OAKV C/CNTR 0.0000	SODAVLE CTY 0.4080	LBCC 0.6805	Code 9-16	LEB AQUA CNTR 0.2186	LEB UR III 0.1642
LINN S/WTR 0.0000	LINN S/WTR 0.0000	SD #9 7.9499	Value \$1,814,418	LEB UR I 0.7357	Total 21.7141
Total 11.4897	LEB AQUA CNTR 0.2400	SCIO R/F 1.2745	LINN CNTY 3.2869	LEB UR II 1.5645	
	Total 13.0113	LINN S/WTR 0.0000	ESD LBL 0.2777	LEB UR III 0.1642	Code 9-26
Code 8-36		LEB AQUA CNTR 0.2400	LBCC 0.6198	Total 21.7141	Value \$1,000
Value \$454,600	Code 9-2	Total 13.8778	SD #9 7.2383		LINN CNTY 3.2869
LINN CNTY 3.4280	Value \$341,542,178		LEBANON CTY 5.5507		ESD LBL 0.2777
ESD LBL 0.3049	LINN CNTY 3.4280	Code 9-9	LEBANON R/F 2.0577		LBCC 0.6198
LBCC 0.6805	ESD LBL 0.3049	Value \$1,015,602	N LEB WTR 0.1420		SD #9 7.2383
SD #8J 4.9623	LBCC 0.6805	LINN CNTY 3.4280	LINN S/WTR 0.0000		LEBANON CTY 5.5507
OAKV C/CNTR 0.0000	SD #9 7.9499	ESD LBL 0.3049	LEB AQUA CNTR 0.2186		LINN S/WTR 0.0000
LINN S/WTR 0.0000	LEBANON R/F 2.2600	LBCC 0.6805	LEB UR I 0.7357		LEB AQUA CNTR 0.2186
Total 9.3757	LINN S/WTR 0.0000	SD #9 7.9499	LEB UR II 1.5645		LEB UR I 0.6867
	LEB AQUA CNTR 0.2400	LINN S/WTR 0.0000	LEB UR III 0.1642		LEB UR II 1.4302
	Total 14.8633	LEB AQUA CNTR 0.2400	Total 21.8561		LEB UR III 0.1452
		Total 12.6033			Total 19.4541

Tax rates are shown in dollars per thousand of taxable value. Rates are before Measure 5 compression.

LINN COUNTY TAX SUMMARY

2004-2005

Code 9-27	Code 9-33	Code 9-40	Code 9-46	Code 9-53	Code 9-58
Value \$958,725	Value \$19,053,289	Value \$68,947,018	Value \$15,784,957	Value \$1,357,567	Value \$4,008,552
LINN CNTY 3.3456	LINN CNTY 3.4280	LINN CNTY 3.4280	LINN CNTY 3.4280	LINN CNTY 3.3456	LINN CNTY 3.2869
ESD LBL 0.2868	ESD LBL 0.3049	ESD LBL 0.3049	ESD LBL 0.3049	ESD LBL 0.2868	ESD LBL 0.2777
LBCC 0.6401	LBCC 0.6805	LBCC 0.6805	LBCC 0.6805	LBCC 0.6401	LBCC 0.6198
SD #9 7.4775	SD #9 7.9499	SD #9 7.9499	SD #9 7.9499	SD #9 7.4775	SD #9 7.2383
LEBANON R/F 2.1257	LEBANON R/F 2.2600	LEBANON R/F 2.2600	LEBANON R/F 2.2600	LEBANON R/F 2.1257	LEBANON CTY 5.5507
GP WTR #2 0.0000	GP WTR #2 0.0000	LEB AQUA CNTR 0.2400	LEB AQUA CNTR 0.2400	GP WTR #2 0.0000	LEBANON R/F 2.0577
LINN S/WTR 0.0000	LINN S/WTR 0.0000	Total 14.8633	Total 14.8633	LINN S/WTR 0.0000	LINN S/WTR 0.0000
LEB AQUA CNTR 0.2258	LEB AQUA CNTR 0.2400	Code 9-41	Code 9-47	LEB AQUA CNTR 0.2258	LEB AQUA CNTR 0.2186
LEB UR II 1.2191	Total 14.8633	Value \$2,571,369	Value \$53,177,691	LEB UR II 1.2191	LEB UR I 0.7357
Total 15.3206		LINN CNTY 3.4280	LINN CNTY 3.2869	Total 15.3206	LEB UR II 1.5645
Code 9-28	Code 9-34	ESD LBL 0.3049	ESD LBL 0.2777	Code 9-54	LEB UR III 0.1642
Value \$4,000	Value \$3,314,312	LBCC 0.6805	LBCC 0.6198	Value \$325,768	Total 21.7141
LINN CNTY 3.3456	LINN CNTY 3.4280	SD #9 7.9499	SD #9 7.2383	LINN CNTY 3.2869	Code 9-60
ESD LBL 0.2868	ESD LBL 0.3049	LEBANON R/F 2.2600	LEBANON CTY 5.5507	ESD LBL 0.2777	Value \$285,471
LBCC 0.6401	LBCC 0.6805	N LEB WTR 0.1420	LEBANON R/F 2.0577	LBCC 0.6198	LINN CNTY 3.4280
SD #9 7.4775	SD #9 7.9499	LEB AQUA CNTR 0.2400	LINN S/WTR 0.0000	SD #9 7.2383	ESD LBL 0.3049
GP WTR #2 0.0000	LEBANON R/F 2.2600	Total 15.0053	LEB AQUA CNTR 0.2186	LEBANON CTY 5.5507	LBCC 0.6805
LINN S/WTR 0.0000	LINN S/WTR 0.0000	Code 9-42	LEB UR I 0.7357	LEBANON R/F 2.0577	SD #9 7.9499
LEB AQUA CNTR 0.2258	LEB AQUA CNTR 0.2400	Value \$7,245,264	LINN S/WTR 0.0000	LINN S/WTR 0.0000	GP WTR 0.0000
LEB UR II 1.0848	Total 14.8633	LINN CNTY 3.4280	LEB UR II 1.5645	LEB AQUA CNTR 0.2186	LINN S/WTR 0.0000
Total 13.0606	Code 9-35	ESD LBL 0.3049	LEB UR III 0.1642	LEB UR I 0.7357	LEB AQUA CNTR 0.2400
Code 9-29	Value \$166,355	LBCC 0.6805	Total 21.7141	LEB UR II 1.5645	Total 12.6033
Value \$2,491,870	LINN CNTY 3.4280	SD #9 7.9499	Code 9-48	LEB UR III 0.1642	Code 9-62
LINN CNTY 3.2869	ESD LBL 0.3049	LEB AQUA CNTR 7.9499	Value \$35,448,807	Total 21.7141	Value \$1,174,639
ESD LBL 0.2777	LBCC 0.6805	Total 12.6033	LINN CNTY 3.4280	Code 9-55	LINN CNTY 3.4280
LBCC 0.6198	SD #9 7.9499	Code 9-43	ESD LBL 0.3049	Value \$12,001	ESD LBL 0.3049
SD #9 7.2383	LEBANON R/F 2.2600	Value \$48,342	LBCC 0.6805	LINN CNTY 3.3456	LBCC 0.6805
LEBANON CTY 5.5507	N LEB WTR 0.1420	LINN CNTY 3.2869	SD #9 7.9499	ESD LBL 0.2777	SD #9 7.9499
LEBANON R/F 2.0577	LINN S/WTR 0.0000	ESD LBL 0.2777	LEBANON R/F 2.2600	LBCC 0.6198	TANGENT R/F 2.5739
LINN S/WTR 0.0000	LEB AQUA CNTR 0.2400	LBCC 0.6198	N LEB WTR 0.1420	SD #9 7.4775	LINN S/WTR 0.0000
LEB AQUA CNTR 0.2186	Total 15.0053	SD #9 7.2383	LINN S/WTR 0.0000	GP WTR #2 0.0000	LEB AQUA CNTR 0.2400
LEB UR I 0.7357	Code 9-36	LEBANON CTY 5.5507	LEB AQUA CNTR 0.2400	LINN S/WTR 0.0000	Total 15.1772
LEB UR II 1.5645	Value \$267,340	LEBANON R/F 2.0577	Total 15.0053	LEB AQUA CNTR 0.2258	Code 9-63
LEB UR III 0.1642	LINN CNTY 3.4280	N LEB WTR 0.1420	Code 9-49	LEB UR II 1.0848	Value \$9,964
Total 21.7141	ESD LBL 0.3049	LEB AQUA CNTR 0.2186	Value \$67,579	Total 13.0606	LINN CNTY 3.4280
Code 9-31	LBCC 0.6805	LEB UR I 0.7357	LINN CNTY 3.2869	Code 9-56	ESD LBL 0.3049
Value \$592,524	SD #9 7.9499	LEB UR II 1.5645	ESD LBL 0.2777	Value \$4,500	LBCC 0.6805
LINN CNTY 3.2869	LINN S/WTR 0.0000	LEB UR III 0.1642	LBCC 0.6198	LINN CNTY 3.2869	SD #9 7.9499
ESD LBL 0.2777	LEB AQUA CNTR 0.2400	Total 21.8561	SD #9 7.2383	ESD LBL 0.2777	N LEB WTR 0.1420
LBCC 0.6198	Total 12.6033	Code 9-44	LEBANON CTY 5.5507	LINN CNTY 3.2869	LBCC 0.6198
SD #9 7.2383	Code 9-38	Value \$11,586,812	N LEB WTR 0.1420	ESD LBL 0.2777	SD #9 7.2383
LEBANON CTY 5.5507	Value \$9,435,280	LINN CNTY 3.4280	LINN S/WTR 0.0000	LEBANON CTY 5.5507	LINN S/WTR 0.0000
LEBANON R/F 2.0577	LINN CNTY 3.4280	ESD LBL 0.3049	LEB AQUA CNTR 0.2186	LINN S/WTR 0.0000	LEB AQUA CNTR 0.2400
GP WTR #2 0.0000	ESD LBL 0.3049	LBCC 0.6805	LEB UR I 0.7357	LEB AQUA CNTR 0.2186	Code 9-64
LINN S/WTR 0.0000	LBCC 0.6805	SD #9 7.9499	LEB UR II 1.5645	LEB UR I 0.6867	Value \$767,302
LEB AQUA CNTR 0.2186	SD #9 7.9499	SCIO R/F 1.2745	LEB UR III 0.1642	LEB UR II 1.4302	LINN CNTY 3.4280
LEB UR I 0.7357	SCIO R/F 1.2745	LINN S/WTR 0.0000	Total 21.8561	LEB UR III 0.1452	ESD LBL 0.3049
LEB UR II 1.5645	LINN S/WTR 0.0000	LEB AQUA CNTR 0.2400	Code 9-50	Total 19.4541	LBCC 0.6805
LEB UR III 0.1642	LEB AQUA CNTR 0.2400	Total 13.8778	Value \$4,745,656	Code 9-57	SD #9 7.9499
Total 21.7141	Total 13.8778	Code 9-45	LINN CNTY 3.4280	WATERLOO	LEBANON R/F 2.2600
Code 9-32	Code 9-39	Value \$4,118,569	ESD LBL 0.3049	Value \$6,474,849	GP WTR 0.0000
Value \$2,817,461	Value \$1,528,989	LINN CNTY 3.4280	LBCC 0.6805	LINN CNTY 3.4280	LINN S/WTR 0.0000
LINN CNTY 3.4280	LINN CNTY 3.4280	ESD LBL 0.3049	SD #9 7.9499	ESD LBL 0.3049	LEB AQUA CNTR 0.2400
ESD LBL 0.3049	ESD LBL 0.3049	LBCC 0.6805	GP WTR #2 0.0000	LBCC 0.6805	Total 14.8633
LBCC 0.6805	LBCC 0.6805	SD #9 7.9499	LINN S/WTR 0.0000	SD #9 7.9499	Code 9-65
SD #9 7.9499	SD #9 7.9499	LEB AQUA CNTR 0.2400	LEB AQUA CNTR 0.2400	WTRLOO CTY 0.0000	Value \$2,581,865
BRNSVL R/F 1.1985	SCIO R/F 1.2745	Total 12.6033	Total 12.6033	LEBANON R/F 2.2600	LINN CNTY 3.4280
LINN S/WTR 0.0000	N LEB WTR 0.1420	Code 9-46	Code 9-51	LINN S/WTR 0.0000	ESD LBL 0.3049
LEB AQUA CNTR 0.2400	LINN S/WTR 0.0000	Value \$4,118,569	Value \$4,118,569	LEB AQUA CNTR 0.2400	LBCC 0.6805
Total 13.8018	LEB AQUA CNTR 0.2400	LINN CNTY 3.4280	LINN CNTY 3.4280	Total 14.8633	SD #9 7.9499
	Total 14.0198	ESD LBL 0.3049	ESD LBL 0.3049		ALBANY R/F 2.1500
		LBCC 0.6805	LBCC 0.6805		GP WTR #2 0.0000
		SD #9 7.9499	SD #9 7.9499		LINN S/WTR 0.0000
		LEB AQUA CNTR 0.2400	LEB AQUA CNTR 0.2400		LEB AQUA CNTR 0.2400
		Total 14.0198	Total 14.0198		Total 14.7533

Tax rates are shown in dollars per thousand of taxable value. Rates are before Measure 5 compression.

LINN COUNTY TAX SUMMARY

2004-2005

Table with columns for Code 9-66, Code 9-71, Code 27-1, Code 27-7, Code 27-13, and Code 55-3. Each column lists property types (e.g., LINN CNTY, ESD LBL, LBCC) and their corresponding values and tax rates. Includes sub-sections like LYONS and SWEET HOME.

Tax rates are shown in dollars per thousand of taxable value. Rates are before Measure 5 compression.

LINN COUNTY TAX SUMMARY

2004-2005

Code 55-15	Code 95-4	Code 95-12	Code 127-4	Code 140-12	Code 140-18
Value \$11,051,111	Value \$1,027,429	Value \$1,716,467	Value \$11,290,769	Value \$287,396	Value \$1,725,597
LINN CNTY 3.4280	LINN CNTY 3.4280	LINN CNTY 3.4280	LINN CNTY 3.4280	LINN CNTY 3.4280	LINN CNTY 3.4280
ESD LBL 0.3049	ESD LBL 0.3049	ESD LBL 0.3049	ESD LBL 0.3049	ESD WILL 0.2967	ESD WILL 0.2967
LBCC 0.6805	LBCC 0.6805	LBCC 0.6805	CHEMEKETA CC 0.9649	LBCC 0.6805	LBCC 0.6805
SD #55 6.9290	SD #95 4.5080	SD #95 4.5080	CHEMEKETA LIBR 0.0818	SD #14J 5.1650	SD #14J 5.1650
SW HM FIRE/AM 1.5000	SD #95 BNDS 1.3163	LINN S/WTR 0.0000	SD #127J 4.8880	SCIO R/F 1.2745	JEFFSN R/F 1.7955
Total 12.8424	SCIO R/F 1.2745	Total 8.9214	LYONS R/F 2.5965	JEFF PARK 0.2914	JEFF PARK 0.2914
	S SANT WTR 1.0044		LINN S/WTR 0.0000	LINN S/WTR 0.0000	S SANT WTR 1.0044
	LINN S/WTR 0.0000		Total 12.2641	Total 11.1361	LINN S/WTR 0.0000
	Total 12.5166	Code 95-13			Total 12.6615
Code 55-16		Value \$3,240,168	Code 127-5	Code 140-13	
Value \$65,364		LINN CNTY 3.4280	Value \$13,445,210	Value \$25,075	Code 140-19
LINN CNTY 3.4280	Code 95-7	ESD LBL 0.3049	LINN CNTY 3.4280	LINN CNTY 3.4280	Value \$6,872,910
ESD LBL 0.3049	Value \$658,821	LBCC 0.6805	ESD LBL 0.3049	ESD WILL 0.2967	LINN CNTY 3.4280
LBCC 0.6805	LINN CNTY 3.4280	SD #95 4.5080	CHEMEKETA CC 0.9649	LBCC 0.6805	ESD WILL 0.2967
SD #55 6.9290	ESD LBL 0.3049	SCIO R/F 1.2745	CHEMEKETA LIBR 0.0818	SD #14J 5.1650	LBCC 0.6805
MOHAWK R/F 2.5126	LBCC 0.6805	LINN S/WTR 0.0000	SD #127J 4.8880	SCIO R/F 1.2745	SD #14J 5.1650
LINN S/WTR 0.0000	SD #95 4.5080	Total 10.1959	GATES R/F 2.3000	JEFF PARK 0.2914	JEFFSN R/F 1.7955
Total 13.8550	SD #95 BNDS 1.3163		LINN S/WTR 0.0000	S SANT WTR 1.0044	JEFFSN R/F 1.7955
	STAYTON R/F 1.4345	Code 95-14	Total 11.9676	LINN S/WTR 0.0000	JEFFSN R/F 1.7955
	LINN S/WTR 0.0000	Value \$4,942,011		Total 12.1405	DEV/CON WTR 0.1614
Code 55-17		LINN CNTY 3.4280	Code 127-7		LINN S/WTR 0.0000
Value \$107,467		ESD LBL 0.3049	GATES	Code 140-14	Total 11.8185
LINN CNTY 3.4280	Code 95-8	LBCC 0.6805	Value \$2,719,415	Value \$94,700	Code 140-20
ESD LBL 0.3049	Value \$21,614,160	SD #95 4.5080	LINN CNTY 3.4280	LINN CNTY 3.4280	Value \$187,345
LBCC 0.6805	LINN CNTY 3.4280	LYONS R/F 2.5965	ESD LBL 0.3049	ESD WILL 0.2967	LINN CNTY 3.4280
SD #55 6.9290	ESD LBL 0.3049	LINN S/WTR 0.0000	CHEMEKETA CC 0.9649	LBCC 0.6805	ESD WILL 0.2967
LEBANON R/F 2.2600	LBCC 0.6805	Total 11.5179	CHEMEKETA LIBR 0.0818	SD #14J 5.1650	LBCC 0.6805
LINN S/WTR 0.0000	SD #95 4.5080		SD #127J 4.8880	SD #14J 5.1650	SD #14J 5.1650
Total 13.6024	SD #95 BNDS 1.3163	Code 127-1	GATES CTY 0.5999	LINN S/WTR 0.0000	MILRSBG CTY 0.0000
	SCIO R/F 1.2745	MILL CITY	GATES R/F 2.3000	Total 9.8616	JEFFSN R/F 1.7955
Code 55-18	SANTIAM WTR 0.0000	Value \$43,749,990	LINN S/WTR 0.0000		JEFFSN R/F 1.7955
Value \$197,397	LINN S/WTR 0.0000	LINN CNTY 3.4280	Total 12.5675	Code 140-15	JEFFSN R/F 1.7955
LINN CNTY 3.4280	Total 11.5122	ESD LBL 0.3049		Value \$2,664,441	JEFFSN R/F 1.7955
ESD LBL 0.3049		CHEMEKETA CC 0.9649	Code 127-8	LINN CNTY 3.4280	JEFFSN R/F 1.7955
LBCC 0.6805	Code 95-9	CHEMEKETA LIBR 0.0818	Value \$461,842	ESD WILL 0.2967	Code 509-1
SD #55 6.9290	Value \$800,952	SD #127J 4.8880	LINN CNTY 3.4280	LBCC 0.6805	Value \$85,317,403
LEBANON R/F 2.2600	LINN CNTY 3.4280	MILL CTY 4.1578	ESD LBL 0.3049	SD #14J 5.1650	LINN CNTY 3.4280
Total 13.6024	ESD LBL 0.3049	MIL CTY R/F 1.9348	CHEMEKETA CC 0.9649	SCIO R/F 1.2745	ESD LBL 0.3049
	SD #95 4.5080	LINN S/WTR 0.0000	CHEMEKETA LIBR 0.0818	JEFF PARK 0.2914	LBCC 0.6805
Code 79-1	SD #95 BNDS 1.3163	Total 15.7602	SD #127J 4.8880	SANTIAM WTR 0.0000	SD #509J 5.3839
Value \$52,973	STAYTON R/F 1.4345		IDANHA R/F 1.6592	LINN S/WTR 0.0000	SD #509J BNDS 1.6592
LINN CNTY 3.4280	SANTIAM WTR 0.0000	Code 127-2	LINN S/WTR 0.0000	Total 11.1361	CORVLS R/F 2.1140
ESD LANE 0.2232	LINN S/WTR 0.0000	Value \$21,754,964	Total 11.3268		LINN S/WTR 0.0000
LANE COM COL 0.8850	Total 11.6722	LINN CNTY 3.4280	Code 140-16	Code 140-17	Total 13.5705
SD #79J 4.6687		ESD LBL 0.3049	Value \$5,162,254	Value \$5,162,254	
LINN S/WTR 0.0000	Code 95-10	CHEMEKETA CC 0.9649	LINN CNTY 3.4280	LINN CNTY 3.4280	Code 509-2
Total 9.2049	SCIO	CHEMEKETA LIBR 0.0818	ESD WILL 0.2967	ESD WILL 0.2967	Value \$574,531
	Value \$25,241,626	SD #127J 4.8880	LBCC 0.6805	LBCC 0.6805	LINN CNTY 3.4280
Code 95-2	LINN CNTY 3.4280	MIL CTY R/F 1.9348	SD #14J 5.1650	SD #14J 5.1650	ESD LBL 0.3049
Value \$120,960,859	ESD LBL 0.3049	LINN S/WTR 0.0000	JEFFSN R/F 1.7955	JEFFSN R/F 1.7955	LBCC 0.6805
LINN CNTY 3.4280	LBCC 0.6805	Total 11.6024	JEFF PARK 0.2914	JEFF PARK 0.2914	SD #509J 5.3839
ESD LBL 0.3049	SD #95 4.5080		LINN S/WTR 0.0000	SANTIAM WTR 0.0000	SD #509J BNDS 1.6592
LBCC 0.6805	SD #95 BNDS 4.5080	Code 127-3	Total 11.6571	Total 11.6571	LINN S/WTR 0.0000
SD #95 4.5080	SD #95 BNDS 1.3163	Value \$24,511,026			Total 11.4565
SD #95 BNDS 1.3163	SCIO CTY 4.9057	LINN CNTY 3.4280	Code 127-9	Code 140-17	
SCIO R/F 1.2745	SCIO R/F 1.2745	ESD LBL 0.3049	IDANHA	Value \$3,231,227	Code 509-3
LINN S/WTR 0.0000	LINN S/WTR 0.0000	CHEMEKETA CC 0.9649	Value \$2,125,125	LINN CNTY 3.4280	Value \$6,901,765
Total 11.5122	Total 16.4179	CHEMEKETA LIBR 0.0818	LINN CNTY 3.4280	ESD WILL 0.2967	LINN CNTY 3.4280
		SD #127J 4.8880	ESD LBL 0.3049	LBCC 0.6805	ESD LBL 0.3049
Code 95-3	Code 95-11	LINN S/WTR 0.0000	CHEMEKETA CC 0.9649	SD #14J 5.1650	LBCC 0.6805
Value \$7,460,076	Value \$1,700	Total 9.6676	CHEMEKETA LIBR 0.0818	JEFFSN R/F 1.7955	SD #509J 5.3839
LINN CNTY 3.4280	LINN CNTY 3.4280		SD #127J 4.8880	JEFF PARK 0.2914	SD #509J BNDS 1.6592
ESD LBL 0.3049	ESD LBL 0.3049		IDANHA CTY 2.5029	SANTIAM WTR 0.0000	ALBANY R/F 2.1500
LBCC 0.6805	LBCC 0.6805		IDANHA R/F 1.6592	LINN S/WTR 0.0000	LINN S/WTR 0.0000
SD #95 4.5080	SD #95 4.5080		LINN S/WTR 0.0000	Total 11.6571	Total 13.6065
SD #95 BNDS 1.3163	SD #95 BNDS 1.3163		Total 12.1705		
LINN S/WTR 0.0000	SCIO CTY 4.9057				
Total 10.2377	SCIO R/F 1.2745				
	SANTIAM WTR 0.0000				
	LINN S/WTR 0.0000				
	Total 16.4179				

Tax rates are shown in dollars per thousand of taxable value. Rates are before Measure 5 compression.

LINN COUNTY TAX SUMMARY

2004-2005

Code 509-4 Value \$194,703 LINN CNTY ESD LBL LBCC SD #509J SD #509J BNDS TANGENT R/F LINN S/WTR Total	Code 552-2 Value \$3,604,205 LINN CNTY ESD LBL LBCC SD #552 HALSEY CTY LINN S/WTR Total	Code 552-5 Value \$4,331,048 LINN CNTY ESD LBL LBCC SD #552 TANGENT R/F LINN S/WTR Total	Code 552-8 Value \$379,882 LINN CNTY ESD LBL LBCC SD #552 SW HM FIRE/AM LINN S/WTR Total	Code 552-11 Value \$2,163,952 LINN CNTY ESD LBL LBCC SD #552 HARSBURG R/F LTL MUD WTR LINN S/WTR Total	Code 552-15 Value \$150,500 LINN CNTY ESD LBL LBCC SD #552 OAKV C/CNTR LINN S/WTR Total
Code 509-5 Value \$245,339 LINN CNTY ESD LBL LBCC SD #509J SD #509J BNDS HLY/SHD R/F LINN S/WTR Total	Code 552-3 Value \$86,229,371 LINN CNTY ESD LBL LBCC SD #552 BRNSVL R/F LINN S/WTR Total	Code 552-6 Value \$1,734,832 LINN CNTY ESD LBL LBCC SD #552 HARSBURG R/F LINN S/WTR Total	Code 552-9 Value \$262,933 LINN CNTY ESD LBL LBCC SD #552 LTL MUD WTR LINN S/WTR Total	Code 552-12 HALSEY Value \$28,277,351 LINN CNTY ESD LBL LBCC SD #552 HALSEY CTY HLY/SHD R/F LINN S/WTR Total	Code 552-19 BROWNSVILLE Value \$55,728,892 LINN CNTY ESD LBL LBCC SD #552 BRNSVL CTY BRNSVL R/F LINN S/WTR Total
Code 509-6 Value \$14,558,537 LINN CNTY ESD LBL LBCC SD #509J SD #509J BNDS LINN S/WTR Total	Code 552-4 Value \$93,510,871 LINN CNTY ESD LBL LBCC SD #552 HLY/SHD R/F LINN S/WTR Total	Code 552-7 Value \$8,458,338 LINN CNTY ESD LBL LBCC SD #552 LINN S/WTR Total	Code 552-10 Value \$8,016,051 LINN CNTY ESD LBL LBCC SD #552 HLY/SHD R/F LTL MUD WTR LINN S/WTR Total	Code 552-14 Value \$5,823,136 LINN CNTY ESD LBL LBCC SD #552 HLY/SHD R/F OAKV C/CNTR LINN S/WTR Total	Code 552-20 Value \$217,439,004 LINN CNTY ESD LBL LBCC SD #552 HLY/SHD R/F LINN S/WTR EM PUD Total

Tax rates are shown in dollars per thousand of taxable value. Rates are before Measure 5 compression.

~ District Abbreviations ~

ALBANY CTY	Albany City	JEFF PARK	Jefferson Park Rec. Dist.	SCIO CTY	Scio City
ALBANY R/F	Albany Rural Fire Dist.	JEFFSN R/F	Jefferson Rural Fire Dist.	SCIO R/F	Scio Rural Fire Dist.
ALBANY UR	Albany Urban Renewal	LANE CM COL	Lane Community College	SD #127J	Santiam Canyon School Dist
BRNSVL CTY	Brownsville City	LBCC	Linn-Benton Community College	SD #14J	Jefferson School Dist.
BRNSVL R/F	Brownsville Rural Fire Dist.	LEB AQUA CNTR	Lebanon Aquatic Center	SD #27J	North Santiam School Dist
CHEM CM COL	Chemeketa Community College	LEB UR I	Lebanon Urban Renewal I	SD #4J	Eugene School Dist.
CHEM LIBRARY	Chemeketa CC Library	LEB UR II	Lebanon Urban Renewal II	SD #509J	Corvallis School Dist.
CORVLS R/F	Corvallis Rural Fire Dist.	LEB UR III	Lebanon Urban Renewal III	SD #509J BNDS	Corvallis School Dist. Bonds
DEV/CON WTR	Dever Conner Water Dist.	LEBANON CTY	Lebanon City	SD #55	Sweet Home School Dist.
EM PUD	Emerald Peoples Util. Dist.	LEBANON R/F	Lebanon Rural Fire Dist.	SD #552	Central Linn School Dist.
ESD LANE	Lane Ed Serv Dist	LINN CNTY	Linn County	SD #7	Harrisburg School Dist.
ESD LBL	Linn Benton Lincoln ESD	LINN S/WTR	Linn Soil & Water Conserv. Dist.	SD #79J	Marcola School Dist.
ESD WILL	Willamette Reginal ESD	LTL MUD WTR	Little Muddy Creek Water Dist	SD #8J	Albany School Dist.
GATES CTY	Gates City	LY/MEH WTR	Lyons/Mehama Water Dist.	SD #9	Lebanon Community School Dist.
GATES R/F	Gates Rural Fire Dist.	LYONS CTY	Lyons City	SD #95	Scio School Dist.
GP WTR	Grand Prairie Water Control Dist.	LYONS R/F	Lyons Rural Fire Dist.	SD #95 Bonds	Scio School Dist. Bonds
GP WTR #2	Grand Prairie Water Control Dist. #2	MIL CTY R/F	Mill City Rural Fire Dist.	SODAVLE CTY	Sodaville City
HALSEY CTY	Halsey City	MILL CTY	Mill City	STAYTON R/F	Stayton Rural Fire Dist.
HARSBG CTY	Harrisburg City	MILRSBG CTY	Millersburg City	SW HM CEM	Sweet Home Cemetery Dist.
HARSBURG R/F	Harrisburg Rural Fire Dist.	MOHAWK R/F	Mohawk Valley Rural Fire Dist.	SW HM CTY	Sweet Home City
HLY/SHD R/F	Halsey/Shed Rural Fire Dist.	N LEB WTR	North Lebanon Water Dist.	SW HM FIRE/AM	Sweet Home Fire & Ambulance Dist
HRSBRG UR	Harrisburg Urban Renewal	OAK C/CNTR	Oak Creek Community Center Dist.	TANGENT CTY	Tangent City
IDANHA CTY	Idanha City	S SANT WTR	South Santiam Water Dist.	TANGENT R/F	Tangent Rural Fire Dist.
IDANHA R/F	Idanha Rural Fire Dist.	SANTIAM WTR	Santiam Water Dist.	WTRLOO CTY	Waterloo City

This summary is designed to provide information about the current Assessment and Tax Roll. More detailed or specific information is available from our office, located in room 215 of the County Courthouse at 300 4th Ave SW in Albany.

If you have questions concerning property you own or more general questions about the property tax system, you are welcome to discuss your situation with a member of our staff. If you are eligible for a program to help reduce your property taxes, we will gladly help in any way we can.

Ad valorem taxes are based on the assessed value of your property as of January 1st. Those taxes provide funds for the operation of schools, cities, fire districts, and other miscellaneous taxing districts.

The Assessor does not tax, but values your property through methods prescribed by state law and regulation. The Assessor does not determine the amount of money your taxing district receives. To control spending, you should take an active interest in local budget meetings and elections. You are, in effect, purchasing services with your tax dollars.

Taxes are due and payable in three installments. The first third is due on November 15th, the second third on February 15th, and the final third on May 15th. A three percent discount will be allowed on taxes paid in full on or before November 15th. A two percent discount will be allowed if two-thirds of the total taxes are paid on or before November 15th. No discount will be allowed on taxes paid after November 15th. Interest at a rate of 1-1/3% per month or fraction of a month will be charged on any payment made after the installment due date.

By law this office must credit your property tax payments to the earliest year for which taxes are due on your property. In order to receive a discount on your current year's bill, all prior year's taxes, penalties and interest must first be fully paid.

I, Mark Noakes, Linn County Assessor/Tax Collector, State of Oregon, do hereby certify that the assessed valuations, tax levies and taxes set forth herein contained, are true and correct copies of the originals, as the same appears on file in my office and custody.

Mark Noakes
Linn County Assessor/Tax Collector

**Visit the Linn County web site at
www.co.linn.or.us**

Location: Linn County Courthouse, Room 215
Mailing Address: Linn County Assessment & Taxation
PO Box 100
Albany OR 97321
Phone: (541) 967-3808