

•••• 2005-2006 ••••

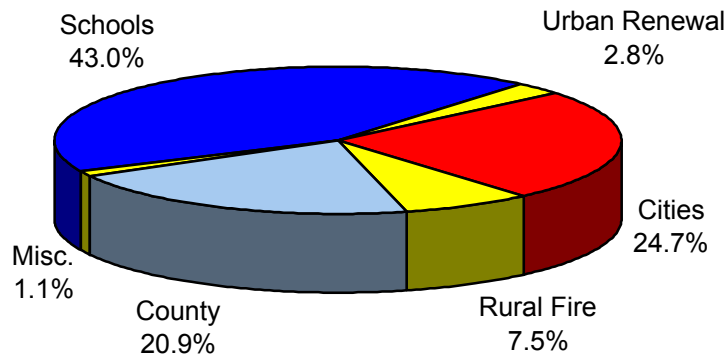
**SUMMARY OF ASSESSMENT AND TAX ROLL - LINN COUNTY, OREGON**

**VALUATION for Tax Year beginning July 1, 2005**

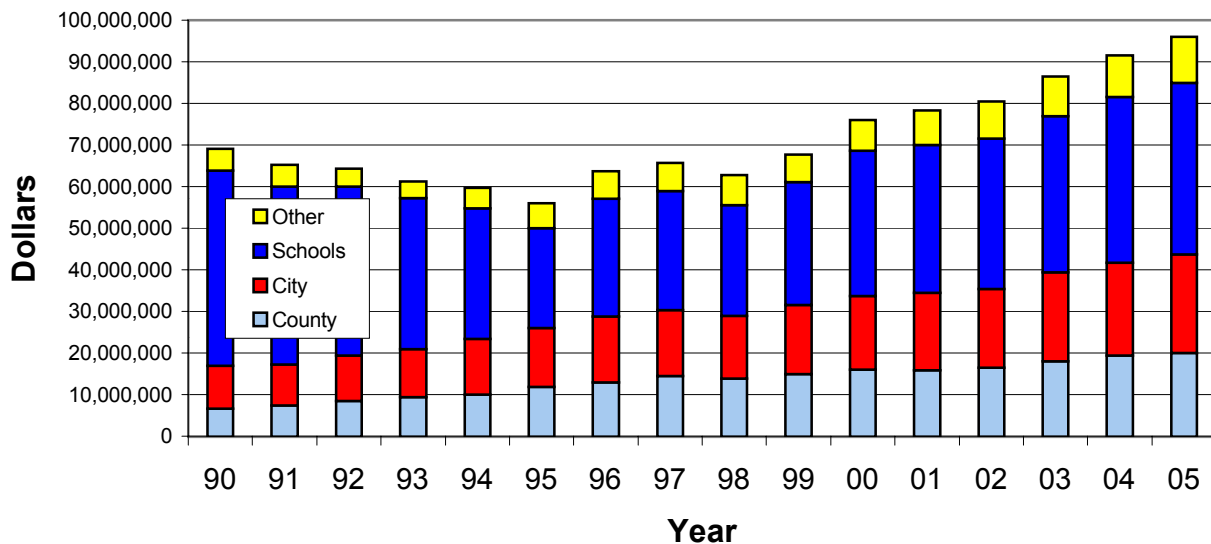
	Measure 5 Value	Assessed Value	Veteran's Exemption	Taxable Value
Real Property	7,354,839,126	5,806,416,380	13,843,887	5,792,572,493
Manufactured Structures	135,470,390	114,437,161	1,567,951	112,869,210
Personal Property	208,496,710	208,496,710		208,496,710
Public Utilities	236,601,576	230,450,846		230,450,846
<b>Total</b>	<b>7,935,407,802</b>	<b>6,359,801,097</b>	<b>15,411,838</b>	<b>6,344,389,259</b>

Measure 5 Value (M5V) is the Real Market Value (RMV) adjusted for special assessments.  
 Assessed Value (AV) is the lesser of M5V and the Measure 50 Maximum Assessed Value (MAV).  
 Taxable Value is Assessed Value less Veteran's Exemption.

**DISTRIBUTION of TAX DOLLARS**



**TAX DOLLARS by YEAR**



Schools includes Community Colleges and Education Service Districts.

**ASSESSMENT & TAXES by DISTRICT**

	MEASURE 5 VALUE	TAXABLE VALUE	LESS URBAN RENEWAL	TOTAL VALUE TO COMPUTE TAX RATES	MAXIMUM TAX RATE	TAXES IMPOSED
<b>COUNTY</b>	7,919,995,964	6,344,389,259	121,781,131	6,222,608,128	3.3788	20,051,793.97
<b>CITIES</b>						
Albany	2,505,957,967	2,103,172,514	41,571,478	2,061,601,036	7.9573	16,603,061.33
Brnsvl	87,085,743	59,349,381		59,349,381	7.9412	471,296.32
Gates	3,654,230	2,831,287		2,831,287	0.4668	1,321.60
Halsey	46,296,167	33,311,467		33,311,467	8.0473	268,067.27
Harrisbrg	169,794,108	127,124,046	9,271,941	117,852,105	4.2564	541,090.84
Idanha	3,159,950	2,307,169		2,307,169	2.5029	5,774.63
Lebanon	742,624,234	606,401,496	67,349,199	539,052,297	5.3566	3,172,552.87
Lyons	71,530,580	51,379,913		51,379,913	2.8657	147,239.43
Mill City	63,464,990	46,686,655		46,686,655	4.1578	194,113.85
Millrsbrg	465,931,077	424,487,433		424,487,433	0.0000	0.00
Scio	37,634,180	26,524,824		26,524,824	4.9057	130,122.78
Sodaville	13,708,580	10,855,686		10,855,686	0.4080	4,429.05
Swt Home	365,980,520	286,064,781		286,064,781	8.3874	2,138,900.91
Tangent	116,510,730	87,742,410		87,742,410	0.0000	0.00
Waterloo	9,570,300	6,660,956		6,660,956	0.0000	0.00
<b>TOTAL</b>						<b>23,677,970.88</b>
<b>RURAL FIRE PROTECTION DISTRICTS</b>						
Albany	647,926,310	567,823,277		567,823,277	2.1500	1,220,818.35
Brnsvl	215,596,624	154,912,646		154,912,646	1.1985	185,660.34
Corvls	128,261,575	102,469,497		102,469,497	2.1140	216,620.65
Gates	24,015,240	16,798,647		16,798,647	2.3000	38,636.94
Hly/Shd	408,479,753	354,774,016		354,774,016	0.9894	351,012.93
Harrisbrg	327,664,674	245,767,612	9,271,941	236,495,671	1.1299	267,218.52
Idanha	3,719,300	2,753,628		2,753,628	1.6592	4,568.80
Jefferson	251,273,008	187,062,037		187,062,037	1.7692	330,949.80
Lebanon	1,505,955,278	1,180,168,764	70,937,712	1,109,231,052	2.2600	2,473,835.26
Lyons	162,968,874	120,411,374		120,411,374	2.5919	312,094.44
Mill City	96,361,256	73,255,297		73,255,297	1.9348	141,734.49
Monroe	1,480	1,359		1,359	0.0000	0.00
Mohawk	99,810	67,622		67,622	2.5451	172.10
Scio	336,339,888	245,748,481		245,748,481	1.2745	313,205.93
Stayton	91,622,433	66,857,841		66,857,841	1.6766	112,093.81
Sw Hm Fire/Am	697,947,250	518,585,793		518,585,793	1.5000	777,881.19
Sw Hm Amb	78,367,690	64,542,332		64,542,332	0.3500	22,589.68
Tangent	238,683,539	182,757,742		182,757,742	2.5739	470,399.03
<b>TOTAL</b>						<b>7,239,492.26</b>
<b>SCHOOL DISTRICTS</b>						
SD #1	1,480	1,359		1,359	0.0000	0.00
SD #4	10,968,200	8,076,244		8,076,244	7.6460	57,509.95
SD #7	320,719,043	240,715,543	9,271,941	231,443,602	6.2940	1,443,519.14
SD #8	3,681,779,524	3,071,355,585	41,571,478	3,029,784,107	4.9254	14,674,443.35
SD #9	1,628,808,835	1,270,751,822	70,937,712	1,199,814,110	7.4801	8,872,959.24
SD #14	28,771,309	22,339,027		22,339,027	5.1516	112,574.55
SD #29	240,546,303	177,881,041		177,881,041	5.5247	975,429.62
SD #55	821,356,072	618,526,530		618,526,530	6.6224	3,999,051.32
SD #79	66,060	54,441		54,441	4.6687	254.17
SD #95	267,326,194	197,035,718		197,035,718	5.6597	1,097,516.56
SD #129	174,544,291	130,050,047		130,050,047	4.8880	620,917.20
SD #509	132,952,705	105,850,148		105,850,148	6.2375	654,530.62
SD #552	612,155,948	501,751,754		501,751,754	5.2550	2,548,347.48
<b>TOTAL</b>						<b>35,057,053.20</b>

**LINN COUNTY TAX SUMMARY**

**2005-2006**

	MEASURE 5 VALUE	TAXABLE VALUE	LESS URBAN RENEWAL	TOTAL VALUE TO COMPUTE TAX RATES	MAXIMUM TAX RATE	TAXES IMPOSED
<b>EDUCATIONAL SERVICE DISTRICTS</b>						
Lane	11,034,260	8,130,685		8,130,685	0.2232	1,814.01
LBL	7,639,644,092	6,136,038,506	121,781,131	6,014,257,375	0.3049	1,796,657.49
Wil Reg	269,317,612	200,220,068		200,220,068	0.2967	58,758.57
TOTAL						1,857,230.07
<b>COMMUNITY COLLEGES and LIBRARIES</b>						
Chemeketa	320,999,002	239,150,427		239,150,427	0.9643	227,810.12
Lane CC	331,753,303	248,846,228	9,271,941	239,574,287	0.8814	209,414.55
LBCC	7,267,243,659	5,856,392,604	112,509,190	5,743,883,414	0.6858	3,882,088.00
Benton Lib	11,504,860	10,124,518		10,124,518	0.3947	3,996.17
Chem Lib	320,999,002	239,150,427		239,150,427	0.0818	19,562.82
TOTAL						4,342,871.66
<b>MISCELLANEOUS DISTRICTS</b>						
Dev/Con Wtr	18,605,030	14,670,006		14,670,006	1.9583	28,727.19
Jef Pk Rec	29,008,329	22,536,510		22,536,510	0.2914	6,567.14
Leb Aqua Cntr	1,628,808,835	1,270,751,822	70,937,712	1,199,814,110	0.2400	284,531.40
Ly/Meh Wtr	96,165,843	72,088,384		72,088,384	0.9365	67,510.84
N Leb Wtr	83,468,819	63,578,027		63,578,027	0.1420	9,023.96
Sw Hm Cem	589,366,592	443,665,470		443,665,470	0.2166	96,097.88
S Sant Wtr	12,122,300	9,353,705		9,353,705	1.0044	9,394.84
TOTAL						501,853.25
<b>URBAN RENEWAL DISTRICTS</b>						
Albany	2,505,957,967	2,103,172,514		2,103,172,514	0.2961	614,839.86
Harrisburg	169,804,308	127,134,246		127,134,246	1.3889	176,567.41
Lebanon I	742,650,374	606,426,380		606,426,380	0.7002	413,003.27
Lebanon II	745,667,911	608,681,470		608,681,470	2.2673	1,341,282.15
Lebanon III	756,487,694	617,673,885		617,673,885	0.1776	99,445.97
TOTAL						2,645,138.66

**SPECIAL ASSESSMENTS**

<b>DELINQUENT SEWER ASSESSMENTS:</b>			
Albany	13,340.83	Forest Patrol	100,358.13
Halsey	196.00	Forest Patrol Surcharge	81,700.00
Lebanon	10,428.60	Little Muddy Creek Water Control	6,700.00
Millersburg	2,355.91	Fertile District Imp Co	3,252.19
Sweet Home	15,788.40	Grand Prairie	10,727.35
Tangent	907.45	Grand Prairie Water Control Sub II	153,462.54
TOTAL	43,017.19	Mobile Home Ombudsman Fee	27,414.67
		Additional Farmland Tax	58,682.72
		Additional Forestland Tax	12,284.12
		Delinquent Sewer	43,017.19
		TOTAL	497,598.91
		Corrections	6,130.13
		Late Filing Penalties	58,647.63

**TOTAL IMPOSED AD VALOREM TAXES AND ASSESSMENTS** 95,935,780.62

**IMPOSED AD VALOREM TAX BY PROPERTY TYPE**

REAL PROPERTY	88,151,210.48
PERSONAL PROPERTY	3,012,846.07
MANUFACTURED STRUCTURES	1,652,570.24
UTILITIES	3,119,153.83
TOTAL	95,935,780.62

**LINN COUNTY TAX SUMMARY**

**2005-2006**

Code 1-1	Code 7-7	Code 8-1	Code 8-7	Code 8-14	Code 8-21
Value \$1,359	Value \$27,503,254	<b>ALBANY</b>	Value \$73,922,730	Value \$1,649,329	Value \$7,703,667
LINN CNTY 3.3788	LINN CNTY 3.3788	Value \$1,603,730,595	LINN CNTY 3.3788	LINN CNTY 3.3788	LINN CNTY 3.3788
ESD LBL 0.3049	ESD LBL 0.3049	LINN CNTY 3.3122	ESD LBL 0.3049	ESD LBL 0.3049	ESD LBL 0.3049
LBCC 0.6858	LANE CC 0.8814	ESD LBL 0.2999	LBCC 0.6858	LBCC 0.6858	LBCC 0.6858
SD #1 0.0000	SD #7 6.2940	LBCC 0.6746	SD #8J 4.9254	SD #8J 4.9254	SD #8J 4.9254
MNRE R/F 0.0000	HARSBG R/F 1.1299	SD #8J 4.8447	MILRSBG CTY 0.0000	HLY/SHD R/F 0.9894	ALBANY R/F 2.1500
Total 4.3695	LTL MUD WTR 0.0000	ALBANY CTY 7.9573	JEFFSN R/F 1.7692	LINN S/WTR 0.0000	N LEB WTR 0.1420
	LINN S/WTR 0.0000	LINN S/WTR 0.0000	LINN S/WTR 0.0000	Total 10.2843	LINN S/WTR 0.0000
	Total 11.9890	ALBANY UR 0.2961	Total 11.0641		Total 11.5869
		Total 17.3848			
<b>Code 7-1</b>	<b>Code 7-8</b>	<b>Code 8-2</b>	<b>Code 8-8</b>	<b>Code 8-15</b>	<b>Code 8-22</b>
<b>HARRISBURG</b>	Value \$114,186,640	Value \$98,108,425	Value \$81,129,095	Value \$472,835	Value \$49,898
LINN CNTY 3.2812	LINN CNTY 3.2812	LINN CNTY 3.3788	LINN CNTY 3.3788	LINN CNTY 3.3788	LINN CNTY 3.3788
ESD LBL 0.2827	ESD LBL 0.2827	ESD LBL 0.3049	ESD LBL 0.3049	ESD LBL 0.3049	ESD LBL 0.3049
LANE CC 0.8172	LANE CC 0.8172	LBCC 0.6858	LBCC 0.6858	LBCC 0.6858	ESD LBL 0.3049
SD #7 5.8350	SD #7 5.8350	LBCC 0.6858	SD #8J 4.9254	SD #8J 4.9254	LBCC 0.6858
HARSBG CTY 4.2564	SD #7 5.8350	SD #8J 4.9254	TANGENT R/F 2.5739	LEBANON R/F 2.2600	SD #8J 4.9254
HARSBG R/F 1.0475	HARSBG CTY 4.2564	ALBANY R/F 2.1500	LINN S/WTR 0.0000	LINN S/WTR 0.0000	N LEB WTR 0.1420
LINN S/WTR 0.0000	HARSBG R/F 1.0475	LINN S/WTR 0.0000	Total 11.8688	Total 11.5549	LINN S/WTR 0.0000
HRSBRG SP UR 1.3889	LINN S/WTR 0.0000	LINN S/WTR 0.0000			Total 9.4369
Total 16.9089	HRSBRG SP UR 1.3889	Total 11.4449			
	Total 16.9089		<b>Code 8-9</b>	<b>Code 8-16</b>	<b>Code 8-23</b>
			Value \$79,393,224	Value \$10,726,602	Value \$2,561,072
			LINN CNTY 3.3788	LINN CNTY 3.3788	LINN CNTY 3.3788
			ESD LBL 0.3049	ESD LBL 0.3049	ESD LBL 0.3049
			LBCC 0.6858	LBCC 0.6858	ESD LBL 0.3049
			SD #8J 4.9254	SD #8J 4.9254	LBCC 0.6858
			JEFFSN R/F 1.7692	CORVLS R/F 2.1140	SD #8J 4.9254
			LINN S/WTR 0.0000	LINN S/WTR 0.0000	LEBANON R/F 2.2600
			Total 11.0641	Total 11.4089	N LEB WTR 0.1420
					LINN S/WTR 0.0000
					Total 11.6969
<b>Code 7-2</b>	<b>Code 7-9</b>	<b>Code 8-3</b>	<b>Code 8-10</b>	<b>Code 8-17</b>	<b>Code 8-24</b>
Value \$63,627,591	Value \$15,818,127	Value \$4,139,062	Value \$6,116,065	Value \$17,740,376	Value \$4,235,762
LINN CNTY 3.3788	LINN CNTY 3.3788	LINN CNTY 3.3788	LINN CNTY 3.3788	LINN CNTY 3.3788	LINN CNTY 3.3788
ESD LBL 0.3049	ESD LBL 0.3049	ESD LBL 0.3049	ESD LBL 0.3049	ESD LBL 0.3049	ESD LBL 0.3049
LANE CC 0.8814	ESD LBL 0.3049	LBCC 0.6858	LBCC 0.6858	LBCC 0.6858	LBCC 0.6858
SD #7 6.2940	LANE CC 0.8814	SD #8J 4.9254	SD #8J 4.9254	SD #8J 4.9254	ESD LBL 0.3049
HARSBG R/F 1.1299	SD #7 6.2940	ALBANY R/F 2.1500	JEFFSN R/F 1.7692	SCIO R/F 1.2745	LBCC 0.6858
LINN S/WTR 0.0000	SD #7 6.2940	GP WTR 0.0000	LINN S/WTR 0.0000	LINN S/WTR 0.0000	SD #8J 4.9254
Total 11.9890	HARSBG R/F 1.1299	LINN S/WTR 0.0000	Total 11.0641	Total 13.0224	JEFFSN R/F 1.7692
	LINN S/WTR 0.0000	Total 11.4449			S SANT WTR 1.0044
	Total 11.9890				LINN S/WTR 0.0000
					Total 12.0685
<b>Code 7-3</b>	<b>Code 7-10</b>	<b>Code 8-4</b>	<b>Code 8-11</b>	<b>Code 8-18</b>	<b>Code 8-25</b>
Value \$362,689	Value \$50,947	Value \$34,917,205	Value \$87,329,452	Value \$1,890,374	Value \$3,970,208
LINN CNTY 3.3788	LINN CNTY 3.3788	LINN CNTY 3.3788	LINN CNTY 3.3788	LINN CNTY 3.3788	LINN CNTY 3.3788
ESD LBL 0.3049	ESD LBL 0.3049	ESD LBL 0.3049	ESD LBL 0.3049	ESD LBL 0.3049	ESD LBL 0.3049
LANE CC 0.8814	ESD LBL 0.3049	LBCC 0.6858	LBCC 0.6858	LBCC 0.6858	ESD LBL 0.3049
SD #7 6.2940	LANE CC 0.8814	SD #8J 4.9254	SD #8J 4.9254	SD #8J 4.9254	ESD LBL 0.3049
BRNSVL R/F 1.1985	LANE CC 0.8814	ALBANY R/F 2.1500	JEFFSN R/F 1.7692	ALBANY R/F 2.1500	ESD LBL 0.3049
LINN S/WTR 0.0000	SD #7 6.2940	GP WTR 0.0000	LINN S/WTR 0.0000	LINN S/WTR 0.0000	ESD LBL 0.3049
Total 12.0576	HARSBG R/F 1.1299	LINN S/WTR 0.0000	Total 13.0224	Total 10.5694	ESD LBL 0.3049
	LTL MUD WTR 0.0000	Total 11.4449			LBCC 0.6858
	LINN S/WTR 0.0000				SD #8J 4.9254
	Total 11.9890				SCIO R/F 1.2745
					LBCC 0.6858
<b>Code 7-4</b>	<b>Code 7-11</b>	<b>Code 8-5</b>	<b>Code 8-11</b>	<b>Code 8-19</b>	<b>Code 8-26</b>
Value \$990,133	Value \$10,200	Value \$347,836,982	Value \$87,329,452	Value \$311,968	Value \$66,836,443
LINN CNTY 3.3788	LINN CNTY 3.2812	LINN CNTY 3.3788	LINN CNTY 3.3788	LINN CNTY 3.3788	LINN CNTY 3.3788
ESD LBL 0.3049	LINN CNTY 3.2812	ESD LBL 0.3049	ESD LBL 0.3049	ESD LBL 0.3049	ESD LBL 0.3049
LANE CC 0.8814	LINN CNTY 3.2812	LBCC 0.6858	LBCC 0.6858	LBCC 0.6858	ESD LBL 0.3049
SD #7 6.2940	ESD LBL 0.2827	SD #8J 4.9254	SD #8J 4.9254	SD #8J 4.9254	ESD LBL 0.3049
HLY/SHD R/F 0.9894	LANE CC 0.8172	SD #8J 4.9254	SD #8J 4.9254	SD #8J 4.9254	ESD LBL 0.3049
LINN S/WTR 0.0000	SD #7 5.8350	MILRSBG CTY 0.0000	TANGENT CTY 0.0000	TANGENT CTY 0.0000	ESD LBL 0.3049
Total 11.8485	SD #7 5.8350	ALBANY R/F 2.1500	TANGENT R/F 2.5739	TANGENT R/F 2.5739	ESD LBL 0.3049
	HARSBG R/F 1.0475	LINN S/WTR 0.0000	LINN S/WTR 0.0000	LINN S/WTR 0.0000	ESD LBL 0.3049
	LINN S/WTR 0.0000	Total 11.4449	Total 11.8688	Total 11.8688	ESD LBL 0.3049
	HRSBRG SP UR 1.0542				ESD LBL 0.3049
	Total 12.3178				ESD LBL 0.3049
<b>Code 7-5</b>	<b>Code 7-12</b>	<b>Code 8-6</b>	<b>Code 8-13</b>	<b>Code 8-20</b>	<b>Code 8-27</b>
Value \$4,643,587	Value \$64,200	Value \$2,266,089	Value \$412,958	Value \$1,955,031	Value \$66,836,443
LINN CNTY 3.3788	LINN CNTY 3.2812	LINN CNTY 3.3788	LINN CNTY 3.3788	LINN CNTY 3.3788	LINN CNTY 3.3788
ESD LBL 0.3049	LINN CNTY 3.2812	ESD LBL 0.3049	ESD LBL 0.3049	ESD LBL 0.3049	ESD LBL 0.3049
LANE CC 0.8814	ESD LBL 0.2827	LBCC 0.6858	LBCC 0.6858	LBCC 0.6858	ESD LBL 0.3049
SD #7 6.2940	LANE CC 0.8172	SD #8J 4.9254	SD #8J 4.9254	SD #8J 4.9254	ESD LBL 0.3049
LINN S/WTR 0.0000	SD #7 5.8350	MILRSBG CTY 0.0000	TANGENT CTY 0.0000	TANGENT CTY 0.0000	ESD LBL 0.3049
Total 10.8591	SD #7 5.8350	LINN S/WTR 0.0000	LINN S/WTR 0.0000	LINN S/WTR 0.0000	ESD LBL 0.3049
	HARSBG CTY 4.2564	Total 9.2949	Total 9.2949	Total 9.2949	ESD LBL 0.3049
	LINN S/WTR 0.0000				ESD LBL 0.3049
	HRSBRG SP UR 1.3065				ESD LBL 0.3049
	Total 15.7790				ESD LBL 0.3049
<b>Code 7-6</b>					
Value \$584,969					
LINN CNTY 3.3788					
ESD LBL 0.3049					
LANE CC 0.8814					
SD #7 6.2940					
LTL MUD WTR 0.0000					
LINN S/WTR 0.0000					
Total 10.8591					

Tax rates are shown in dollars per thousand of taxable value. Rates are before Measure 5 compression.

# LINN COUNTY TAX SUMMARY

2005-2006

Code 8-27		Code 8-35		Code 8-47		Code 9-5		Code 9-13		Code 9-18							
Value \$156,201,828		Value \$4,386,461		Value \$157,246		<b>LEBANON</b>		Value \$24,884		Value \$18,609,130							
LINN CNTY	3.3122	LINN CNTY	3.3788	LINN CNTY	3.3122	Value \$441,736,327	LINN CNTY	3.3512	LINN CNTY	3.3788	LINN CNTY						
ESD LBL	0.2999	ESD LBL	0.3049	ESD LBL	0.2999	LINN CNTY	3.2033	ESD LBL	0.2987	ESD LBL	0.3049						
LBCC	0.6746	LBCC	0.6858	LBCC	0.6746	ESD LBL	0.2696	LBCC	0.6718	LBCC	0.6858						
SD #8J	4.8447	SD #8J	4.9254	SD #8J	4.8447	LBCC	0.6063	SD #9	7.3258	SD #9	7.4801						
ALBANY CTY	7.9573	CORVLS R/F	2.1140	ALBANY CTY	7.9573	SD #9	6.6091	LEBANON R/F	2.2134	LEBANON R/F	2.2600						
GP WTR	0.0000	OAKV C/CNTR	0.0000	LINN S/WTR	0.0000	LEBANON CTY	5.3566	LINN S/WTR	0.0000	LEB AQUA CNTR	0.2400						
LINN S/WTR	0.0000	LINN S/WTR	0.0000	ALBANY UR	0.2961	LEBANON R/F	1.9968	LEB AQUA CNTR	0.2351	Total	14.3496						
ALBANY UR	0.2961	Total	11.4089	Total	17.3848	LINN S/WTR	0.0000	LEB SP UR I	0.5761								
Total	17.3848					LEB AQUA CNTR	0.2122	Total	14.6721	<b>Code 9-19</b>							
		<b>Code 8-36</b>		<b>Code 8-48</b>		LEB SP UR I	0.7002			Value \$755,808							
<b>Code 8-28</b>		Value \$96,200		Value \$22,878		LEB SP UR II	2.2673	<b>Code 9-14</b>		LINN CNTY	3.3788						
Value \$1,405,615		LINN CNTY	3.3788	LINN CNTY	3.3122	LEB SP UR III	0.1776	Value \$12,922,137		ESD LBL	0.3049						
LINN CNTY	3.3788	ESD LBL	0.3049	ESD LBL	0.2999	Total	21.3990	LINN CNTY	3.3788	LBCC	0.6858						
ESD LBL	0.3049	LBCC	0.6858	LBCC	0.6746			ESD LBL	0.3049	SD #9	7.4801						
LBCC	0.6858	SD #8J	4.9254	SD #8J	4.8447	<b>Code 9-7</b>		LBCC	0.6858	LEB AQUA CNTR	0.2400						
SD #8J	4.9254	OAKV C/CNTR	0.0000	ALBANY CTY	7.9573	Value \$3,750,358		SD #9	7.4801	Total	12.0896						
TANGENT R/F	2.5739	LINN S/WTR	0.0000	GP WTR	0.0000	LINN CNTY	3.3788	LEBANON R/F	2.2600								
GP WTR #2	0.0000	Total	9.2949	LINN S/WTR	0.0000	ESD LBL	0.3049	GP WTR #2	0.0000	<b>Code 9-20</b>							
LINN S/WTR	0.0000			ALBANY UR	0.2961	LBCC	0.6858	LINN S/WTR	0.0000	Value \$255,899							
Total	11.8688	<b>Code 8-39</b>		Total	17.3848	SD #9	7.4801	LEB AQUA CNTR	0.2400	LINN CNTY	3.3788						
		Value \$417,081				LEBANON R/F	2.2600	Total	14.3496	ESD LBL	0.3049						
<b>Code 8-29</b>		LINN CNTY	3.3122	<b>Code 9-1</b>		N LEB WTR	0.1420			LBCC	0.6858						
Value \$5,279,577		ESD LBL	0.2999	Value \$1,935,153		LINN S/WTR	0.0000	<b>Code 9-15</b>		SD #9	7.4801						
LINN CNTY	3.3788	LBCC	0.6746	LINN CNTY	3.3788	LEB AQUA CNTR	0.2400	Value \$62,223		LEBANON R/F	2.2600						
ESD LBL	0.3049	SD #8J	4.8447	ESD LBL	0.3049	Total	14.4916	LINN CNTY	3.2033	N LEB WTR	0.1420						
LBCC	0.6858	ALBANY CTY	7.9573	LBCC	0.6858			ESD LBL	0.2696	LEB AQUA CNTR	0.2400						
SD #8J	4.9254	ALBANY R/F	2.1500	SD #9	7.4801	<b>Code 9-8</b>		LBCC	0.6063	Total	14.4916						
TANGENT R/F	2.5739	GP WTR #2	0.0000	SODAVLE CTY	0.4080	Value \$15,056,787		SD #9	6.6091								
GP WTR	0.0000	LINN S/WTR	0.0000	LINN S/WTR	0.0000	LINN CNTY	3.3788	LEBANON CTY	5.3566	<b>Code 9-21</b>							
LINN S/WTR	0.0000	ALBANY UR	0.2961	LEB AQUA CNTR	0.2400	ESD LBL	0.3049	LEBANON R/F	1.9968	Value \$1,781,437							
Total	11.8688	Total	19.5348	Total	12.4976	LBCC	0.6858	LINN S/WTR	0.0000	LINN CNTY	3.2033						
						SD #9	7.4801	LEB AQUA CNTR	0.2122	ESD LBL	0.2696						
<b>Code 8-30</b>		<b>Code 8-40</b>		<b>Code 9-2</b>		SCIO R/F	1.2745	LEB SP UR I	0.7002	LBCC	0.6063						
Value \$58,222,210		Value \$66,490		Value \$353,856,945		LINN S/WTR	0.0000	LEB SP UR II	2.2673	SD #9	6.6091						
LINN CNTY	3.3122	LINN CNTY	3.3788	LINN CNTY	3.3788	LEB AQUA CNTR	0.2400	LEB SP UR III	0.1776	LEBANON CTY	5.3566						
ESD LBL	0.2999	ESD LBL	0.3049	ESD LBL	0.3049	Total	13.3641	Total	21.3990	LEBANON R/F	1.9968						
LBCC	0.6746	LBCC	0.6858	LBCC	0.6858	<b>Code 9-9</b>				LEB AQUA CNTR	0.2122						
SD #8J	4.8447	SD #8J	4.9254	SD #9	7.4801	Value \$1,565,834		<b>Code 9-16</b>		LEB SP UR I	0.7002						
ALBANY CTY	7.9573	MILRSBG CTY	0.0000	LEBANON R/F	2.2600	LINN CNTY	3.3788	Value \$5,693,875		LEB SP UR II	2.2673						
GP WTR #2	0.0000	ALBANY R/F	2.1500	LINN S/WTR	0.0000	ESD LBL	0.3049	LINN CNTY	3.2033	LEB SP UR III	0.1776						
LINN S/WTR	0.0000	GP WTR	0.0000	LEB AQUA CNTR	0.2400	LBCC	0.6858	ESD LBL	0.2696	Total	21.3990						
ALBANY UR	0.2961	LINN S/WTR	0.0000	Total	14.3496	SD #9	7.4801	LBCC	0.6063								
Total	17.3848	Total	11.4449			LINN S/WTR	0.0000	SD #9	6.6091	<b>Code 9-22</b>							
				<b>Code 9-3</b>		LEBANON CTY	5.3566	LEBANON CTY	5.3566	Value \$73,958							
<b>Code 8-33</b>		<b>Code 8-42</b>		Value \$24,308,911		LEB AQUA CNTR	0.2400	LEBANON R/F	1.9968	LINN CNTY	3.2033						
Value \$813,173		Value \$197,483		LINN CNTY	3.3788	Total	12.0896	N LEB WTR	0.1420	ESD LBL	0.2696						
LINN CNTY	3.3788	LINN CNTY	3.3788	ESD LBL	0.3049	<b>Code 9-12</b>		LINN S/WTR	0.0000	LBCC	0.6063						
ESD LBL	0.3049	ESD LBL	0.3049	LBCC	0.6858	Value \$7,517,681		LEB AQUA CNTR	0.2122	SD #9	6.6091						
LBCC	0.6858	LBCC	0.6858	SD #9	7.4801	LINN CNTY	3.2033	LEB SP UR I	0.7002	LEBANON CTY	5.3566						
SD #8J	4.9254	SD #8J	4.9254	LINN S/WTR	0.0000	ESD LBL	0.2696	LEB SP UR II	2.2673	LEBANON R/F	1.9968						
TANGENT R/F	2.5739	MILRSBG CTY	0.0000	LEB AQUA CNTR	0.2400	LBCC	0.6063	LEB SP UR III	0.1776	N LEB WTR	0.1420						
OAKV C/CNTR	0.0000	JEFFSN R/F	1.7692	Total	12.0896	SD #9	6.6091	Total	21.5410	LEB AQUA CNTR	0.2122						
LINN S/WTR	0.0000	JEFF PARK	0.2914			LINN S/WTR	0.0000			LEB SP UR I	0.7002						
Total	11.8688	LINN S/WTR	0.0000	<b>Code 9-4</b>		LEBANON CTY	5.3566	<b>Code 9-17</b>		LEB SP UR II	2.2673						
		Total	11.3555	<b>SODAVILLE</b>		LEBANON R/F	1.9968	Value \$14,121,860		LEB SP UR III	0.1776						
<b>Code 8-34</b>		<b>Code 8-46</b>		Value \$8,920,533		LINN S/WTR	0.0000	LINN CNTY	3.2033	Total	21.5410						
Value \$20,263,220		Value \$284,420,676		LINN CNTY	3.3788	LEB AQUA CNTR	0.2122	ESD LBL	0.2696								
LINN CNTY	3.3788	LINN CNTY	3.3122	ESD LBL	0.3049	LEB SP UR I	0.7002	LBCC	0.6063	<b>Code 9-23</b>							
ESD LBL	0.3049	LINN CNTY	3.3122	LBCC	0.6858	LEB SP UR II	2.2673	SD #9	6.6091	Value \$181,553							
LBCC	0.6858	ESD LBL	0.2999	SD #9	7.4801	LEB SP UR III	0.1776	LEBANON CTY	5.3566	LINN CNTY	3.2033						
SD #8J	4.9254	LBCC	0.6746	SODAVLE CTY	0.4080	Total	21.3990	LEBANON R/F	1.9968	ESD LBL	0.2696						
HLV/SHD R/F	0.9894	SD #8J	4.8447	LEBANON R/F	2.2600			GP WTR #2	0.0000	LBCC	0.6063						
OAKV C/CNTR	0.0000	ALBANY CTY	7.9573	LINN S/WTR	0.0000	<div style="border: 1px solid black; padding: 5px;">                     Tax rates are shown in dollars per thousand of taxable value. Rates are before Measure 5 compression.                 </div>						LEBANON CTY	5.3566				
LINN S/WTR	0.0000	LINN S/WTR	0.0000	LEB AQUA CNTR	0.2400							LEB SP UR I	0.7002	LEBANON CTY	5.3566	LINN CNTY	3.2033
Total	10.2843	ALBANY UR	0.2961	Total	14.7576							LEB SP UR II	2.2673	LEBANON R/F	1.9968	ESD LBL	0.2696
		Total	17.3848									LEB SP UR III	0.1776	GP WTR #2	0.0000	LBCC	0.6063
												Total	21.3990	LINN S/WTR	0.0000	SD #9	6.6091
														LEB AQUA CNTR	0.2122	LEBANON CTY	5.3566
														LEB SP UR I	0.7002	LINN S/WTR	0.0000
														LEB SP UR II	2.2673	LEB AQUA CNTR	0.2122
														LEB SP UR III	0.1776	LEB SP UR I	0.6536
														Total	21.3990	LEB SP UR II	2.0726
										LEB SP UR III	0.1557						
										Total	19.1390						

**LINN COUNTY TAX SUMMARY**

**2005-2006**

<b>Code 9-24</b>	<b>Code 9-29</b>	<b>Code 9-35</b>	<b>Code 9-42</b>	<b>Code 9-48</b>	<b>Code 9-55</b>
Value \$17,000	Value \$2,708,743	Value \$192,714	Value \$7,373,678	Value \$36,817,572	Value \$12,000
LINN CNTY 3.20	LINN CNTY 3.2033	LINN CNTY 3.2033	LINN CNTY 3.3788	LINN CNTY 3.3788	LINN CNTY 3.3788
ESD LBL 0.27	ESD LBL 0.2696	ESD LBL 0.2696	ESD LBL 0.3049	ESD LBL 0.3049	ESD LBL 0.3049
LBCC 0.61	LBCC 0.6063	LBCC 0.6063	LBCC 0.6858	LBCC 0.6858	LBCC 0.6858
SD #9 6.61	SD #9 6.6091	SD #9 6.6091	SD #9 7.4801	SD #9 7.4801	SD #9 7.4801
LEBANON CTY 5.36	LEBANON CTY 5.3566	LEBANON R/F 5.3566	LEB AQUA CNTR 2.2600	LEBANON R/F 0.2400	GP WTR #2 2.2600
LEB AQUA CNTR 0.21	LEBANON R/F 1.9968	N LEB WTR 0.1420	Total 12.0896	N LEB WTR 0.1420	LINN S/WTR 0.0000
LEB SP UR I 0.65	LINN S/WTR 0.0000	LINN S/WTR 0.0000		LINN S/WTR 0.0000	LEB AQUA CNTR 0.2194
LEB SP UR II 2.0726	LEB AQUA CNTR 0.2122	LEB AQUA CNTR 0.2400	<b>Code 9-43</b>	LEB AQUA CNTR 0.2400	LEB SP UR II 1.5664
LEB SP UR III 0.1557	LEB SP UR I 0.7002	Total 14.4916	Value \$42,392	Total 14.4916	Total 12.7908
Total 19.1390	LEB SP UR II 2.2673	<b>Code 9-36</b>	LINN CNTY 3.2033		
	LEB SP UR III 0.1776	Value \$276,389	ESD LBL 0.2696	<b>Code 9-49</b>	<b>Code 9-56</b>
<b>Code 9-25</b>	Total 21.3990	LINN CNTY 3.3788	LBCC 0.6063	Value \$55,641	Value \$4,800
Value \$56,727,972	<b>Code 9-31</b>	ESD LBL 0.3049	SD #9 6.6091	LINN CNTY 3.2033	LINN CNTY 3.2033
LINN CNTY 3.2033	Value \$849,671	LEBANON CTY 5.3566	LEBANON CTY 6.6091	ESD LBL 0.2696	ESD LBL 0.2696
ESD LBL 0.2696	LINN CNTY 3.2033	LBCC 0.6858	LEBANON R/F 1.9968	LBCC 0.6063	LBCC 0.6063
LBCC 0.6063	SD #9 7.4801	SD #9 7.4801	N LEB WTR 0.1420	SD #9 6.6091	SD #9 6.6091
SD #9 6.6091	ESD LBL 0.2696	LINN S/WTR 0.0000	LEB AQUA CNTR 0.2122	LEBANON CTY 5.3566	LEBANON CTY 5.3566
LEBANON CTY 5.3566	LBCC 0.6063	LEB AQUA CNTR 0.2400	LEB SP UR I 0.7002	LEBANON R/F 1.9968	LINN S/WTR 0.0000
LEBANON R/F 1.9968	SD #9 6.6091	Total 12.0896	LEB SP UR II 2.2673	N LEB WTR 0.1420	LEB AQUA CNTR 0.2122
LINN S/WTR 0.0000	LEBANON CTY 5.3566	<b>Code 9-38</b>	LEB SP UR III 0.1776	LINN S/WTR 0.0000	LEB SP UR I 0.6536
LEB AQUA CNTR 0.2122	LEBANON R/F 1.9968	Value \$9,993,460	Total 21.5410	LEB AQUA CNTR 0.2122	LEB SP UR II 2.0726
LEB SP UR I 0.7002	GP WTR #2 0.0000	LINN CNTY 3.3788	<b>Code 9-44</b>	LEB SP UR I 0.7002	LEB SP UR III 0.1557
LEB SP UR II 2.2673	LINN S/WTR 0.0000	ESD LBL 0.3049	Value \$12,006,066	LEB SP UR II 2.2673	Total 19.1390
LEB SP UR III 0.1776	LEB AQUA CNTR 0.2122	LBCC 0.6858	LINN CNTY 3.3788	LEB SP UR III 0.1776	
Total 21.3990	LEB SP UR I 0.7002	SD #9 7.4801	ESD LBL 0.3049	Total 21.5410	<b>Code 9-57</b>
	LEB SP UR II 2.2673	SCIO R/F 1.2745	LINN CNTY 3.3788		<b>WATERLOO</b>
<b>Code 9-26</b>	LEB SP UR III 0.1776	LINN S/WTR 0.0000	LBCC 0.6858	<b>Code 9-50</b>	Value \$6,660,956
Value \$1,000	Total 21.3990	LEB AQUA CNTR 0.2400	SD #9 7.4801	Value \$4,878,778	LINN CNTY 3.3788
LINN CNTY 3.2033	<b>Code 9-32</b>	Total 13.3641	SCIO R/F 1.2745	LINN CNTY 3.3788	ESD LBL 0.3049
ESD LBL 0.2696	Value \$2,877,664	<b>Code 9-39</b>	LINN S/WTR 0.0000	ESD LBL 0.3049	LBCC 0.6858
LBCC 0.6063	LINN CNTY 3.3788	Value \$1,717,362	LEB AQUA CNTR 0.2400	LBCC 0.6858	SD #9 7.4801
SD #9 6.6091	ESD LBL 0.3049	LINN CNTY 3.3788	Total 13.3641	SD #9 7.4801	WTRLOO CTY 0.0000
LEBANON CTY 5.3566	LBCC 0.6858	ESD LBL 0.3049	<b>Code 9-45</b>	GP WTR #2 0.0000	LEBANON R/F 2.2600
LINN S/WTR 0.0000	SD #9 7.4801	LINN CNTY 3.3788	Value \$4,204,340	LINN S/WTR 0.0000	LINN S/WTR 0.0000
LEB AQUA CNTR 0.2122	BRNSVL R/F 1.1985	ESD LBL 0.6858	LINN CNTY 3.3788	LEB AQUA CNTR 0.2400	LEB AQUA CNTR 0.2400
LEB SP UR I 0.6536	LINN S/WTR 0.0000	SD #9 7.4801	ESD LBL 0.3049	Total 12.0896	Total 14.3496
LEB SP UR II 2.0726	LEB AQUA CNTR 0.2400	SCIO R/F 1.2745	LBCC 0.6858	<b>Code 9-53</b>	<b>Code 9-58</b>
LEB SP UR III 0.1557	Total 13.2881	N LEB WTR 0.1420	SD #9 7.4801	Value \$1,404,378	Value \$4,001,789
Total 19.1390		LINN S/WTR 0.0000	LEBANON R/F 2.2600	LINN CNTY 3.2636	LINN CNTY 3.2033
	<b>Code 9-33</b>	LEB AQUA CNTR 0.2400	Total 14.3496	ESD LBL 0.2787	ESD LBL 0.2696
<b>Code 9-27</b>	Value \$19,849,380	Total 13.5061	<b>Code 9-46</b>	LBCC 0.6268	LBCC 0.6063
Value \$859,596	LINN CNTY 3.2636	<b>Code 9-40</b>	Value \$16,312,680	SD #9 6.8359	SD #9 6.6091
LINN CNTY 3.2636	ESD LBL 0.3049	Value \$71,999,577	LINN CNTY 3.3788	LEBANON R/F 2.0653	LEBANON CTY 5.3566
ESD LBL 0.2787	LBCC 0.6858	LINN CNTY 3.3788	ESD LBL 0.3049	GP WTR #2 0.0000	LEBANON R/F 1.9968
LBCC 0.6268	SD #9 7.4801	ESD LBL 0.3049	LBCC 0.6858	LINN S/WTR 0.0000	LINN S/WTR 0.0000
SD #9 6.8359	LEBANON R/F 2.2600	ESD LBL 0.3049	SD #9 7.4801	LEB AQUA CNTR 0.2194	LEB AQUA CNTR 0.2122
LEBANON R/F 2.0653	GP WTR #2 0.0000	LBCC 0.6858	LEBANON R/F 2.2600	LEB SP UR I 1.7611	LEB SP UR I 0.7002
GP WTR #2 0.0000	LINN S/WTR 0.0000	SD #9 7.4801	LEBANON R/F 2.2600	Total 15.0508	LEB SP UR II 2.2673
LINN S/WTR 0.0000	LEB AQUA CNTR 0.2400	N LEB WTR 0.1420	LEB AQUA CNTR 0.2400	<b>Code 9-54</b>	LEB SP UR III 0.1776
LEB AQUA CNTR 0.2194	LEB AQUA CNTR 14.3496	LEBANON R/F 2.2600	Total 14.3496	Value \$1,380,304	Total 21.3990
LEB SP UR II 1.7611	<b>Code 9-34</b>	Total 14.3496	<b>Code 9-47</b>	LINN CNTY 3.2033	
Total 15.0508	Value \$3,463,970	<b>Code 9-41</b>	Value \$56,035,928	ESD LBL 0.2696	<b>Code 9-60</b>
<b>Code 9-28</b>	LINN CNTY 3.3788	Value \$2,698,474	LINN CNTY 3.2033	LBCC 0.6063	Value \$293,033
Value \$4,000	ESD LBL 0.3049	LINN CNTY 3.3788	ESD LBL 0.2696	SD #9 6.6091	LINN CNTY 3.3788
LINN CNTY 3.2636	LBCC 0.6858	ESD LBL 0.3049	LBCC 0.6063	LEBANON CTY 5.3566	ESD LBL 0.3049
ESD LBL 0.2787	SD #9 7.4801	LBCC 0.6858	SD #9 6.6091	LEBANON R/F 1.9968	LBCC 0.6858
LBCC 0.6268	LEBANON R/F 2.2600	SD #9 7.4801	LEBANON CTY 5.3566	LINN S/WTR 0.0000	SD #9 7.4801
SD #9 6.8359	LINN S/WTR 0.0000	LEBANON R/F 2.2600	LINN S/WTR 0.0000	GP WTR #2 0.0000	GP WTR 0.0000
SD #9 6.8359	LEB AQUA CNTR 0.2194	N LEB WTR 0.1420	LEBANON R/F 2.2600	LEB AQUA CNTR 0.2122	LINN S/WTR 0.0000
GP WTR #2 0.0000	LEB AQUA CNTR 14.3496	LEB AQUA CNTR 0.2400	LINN S/WTR 0.0000	LEB SP UR I 0.7002	LINN S/WTR 0.0000
LINN S/WTR 0.0000	<b>Code 9-34</b>	Total 14.4916	LEB AQUA CNTR 0.2122	LEB SP UR II 2.2673	LEB AQUA CNTR 0.2400
LEB AQUA CNTR 0.2194	Value \$3,463,970		LEB SP UR I 0.7002	LEB SP UR III 0.1776	Total 12.0896
LEB SP UR II 1.5664	LINN CNTY 3.3788		LEB SP UR II 2.2673	Total 21.3990	
Total 12.7908	ESD LBL 0.2696		LEB SP UR III 0.1776		
	LBCC 0.6063		Total 21.3990		

Tax rates are shown in dollars per thousand of taxable value. Rates are before Measure 5 compression.

**LINN COUNTY TAX SUMMARY**

**2005-2006**

<b>Code 9-62</b>	<b>Code 9-68</b>	<b>Code 9-73</b>	<b>Code 27-2</b>	<b>Code 27-8</b>	<b>Code 27-15</b>
Value \$1,197,578	Value \$10,149,553	Value \$5,090,542	Value \$5,147,578	Value \$87,697	Value \$30,098
LINN CNTY 3.3788	LINN CNTY 3.3461	LINN CNTY 3.2033	LINN CNTY 3.3788	LINN CNTY 3.3788	LINN CNTY 3.3788
ESD LBL 0.3049	ESD LBL 0.3020	ESD LBL 0.2696	ESD WILL 0.2967	ESD WILL 0.2967	ESD WILL 0.2967
LBCC 0.6858	LBCC 0.6793	LBCC 0.6063	CHEM CC 0.9643	CHEM CC 0.9643	LBCC 0.6858
SD #9 7.4801	SD #9 7.4076	SD #9 6.6091	CHEM LIB 0.0818	CHEM LIB 0.0818	SD #29J 5.5247
TANGENT R/F 2.5739	LEBANON R/F 2.2381	LEBANON CTY 5.3566	SD #29J 5.5247	SD #29J 5.5247	SANTIAM WTR 0.0000
LINN S/WTR 0.0000	LINN S/WTR 0.0000	LEBANON R/F 1.9968	LINN S/WTR 0.0000	LYONS CTY 2.8657	LINN S/WTR 0.0000
LEB AQUA CNTR 0.2400	LEB AQUA CNTR 0.2377	LINN S/WTR 0.0000	Total 10.2463	LINN S/WTR 0.0000	Total 9.8860
Total 14.6635	LEB SP UR III 0.1388	LEB AQUA CNTR 0.2122		Total 13.1120	
	Total 14.3496	LEB SP UR I 0.7002	<b>Code 27-3</b>		<b>Code 40-1</b>
<b>Code 9-63</b>	<b>Code 9-69</b>	LEB SP UR II 2.2673	Value \$31,371,840	<b>Code 27-9</b>	Value \$8,076,244
Value \$10,114	Value \$6,482,897	LEB SP UR III 0.1776	LINN CNTY 3.3788	Value \$50,933	LINN CNTY 3.3788
LINN CNTY 3.3788	LINN CNTY 3.2033	Total 21.3990	ESD WILL 0.2967	LINN CNTY 3.3788	ESD LANE 0.2232
ESD LBL 0.3049	ESD LBL 0.2696	<b>Code 9-74</b>	CHEM CC 0.9643	ESD WILL 0.2967	LANE CC 0.8814
LBCC 0.6858	ESD LBL 0.6063	Value \$700,261	CHEM LIB 0.0818	CHEM CC 0.9643	SD #4J 7.6460
SD #9 7.4801	LBCC 0.6063	Value \$700,261	SD #29J 5.5247	CHEM LIB 0.0818	HARSBRG R/F 1.1299
N LEB WTR 0.1420	SD #9 6.6091	LINN CNTY 3.3788	LYONS R/F 2.5919	SD #29J 5.5247	LINN S/WTR 0.0000
LINN S/WTR 0.0000	LEBANON CTY 5.3566	ESD LBL 0.3049	LINN S/WTR 0.0000	LYONS CTY 2.8657	Total 13.2593
LEB AQUA CNTR 0.2400	LEBANON R/F 1.9968	LBCC 0.6858	Total 12.8382	LY/MEH WTR 0.9365	
Total 12.2316	LINN S/WTR 0.0000	SD #9 7.4801		LINN S/WTR 0.0000	<b>Code 55-1</b>
<b>Code 9-64</b>	LEB AQUA CNTR 0.2122	SW HM FIRE/AM 1.5000	<b>Code 27-4</b>	Total 14.0485	<b>SWEET HOME</b>
Value \$779,256	LEB SP UR I 0.7002	LINN S/WTR 0.0000	Value \$385,429		Value \$285,499,281
LINN CNTY 3.3788	LEB SP UR II 2.2673	LEB AQUA CNTR 0.2400	LINN CNTY 3.3788	<b>Code 27-10</b>	LINN CNTY 3.3788
ESD LBL 0.3049	LEB SP UR III 0.1776	Total 13.5896	ESD WILL 0.2967	Value \$63,913,082	ESD LBL 0.3049
LBCC 0.6858	Total 21.3990	<b>Code 9-75</b>	CHEM CC 0.9643	LINN CNTY 3.3788	LBCC 0.6858
SD #9 7.4801		Value \$764,897	CHEM LIB 0.0818	ESD WILL 0.2967	SD #55 6.6224
LEBANON R/F 2.2600	<b>Code 9-70</b>	LINN CNTY 3.3788	SD #29J 5.5247	LBCC 0.6858	SW HM CTY 8.3874
GP WTR 0.0000	Value \$616,441	ESD LBL 0.3049	STAYTON R/F 1.6766	SD #29J 5.5247	SW HM FIRE/AM 1.5000
LINN S/WTR 0.0000	LINN CNTY 3.3461	LBCC 0.6858	LINN S/WTR 0.0000	STAYTON R/F 1.6766	SW HM CEM 0.2166
LEB AQUA CNTR 0.2400	ESD LBL 0.3020	SD #9 7.4801	Total 11.9229	LINN S/WTR 0.0000	LINN S/WTR 0.0000
Total 14.3496	LBCC 0.6793	SW HM FIRE/AM 1.5000	<b>Code 27-5</b>	Total 11.5626	Total 21.0959
<b>Code 9-65</b>	SD #9 7.4076	LINN S/WTR 0.0000	Value \$20,405,488	<b>Code 27-11</b>	<b>Code 55-2</b>
Value \$2,740,207	LEBANON R/F 2.2381	LEB AQUA CNTR 0.2400	LINN CNTY 3.3788	Value \$3,205,339	Value \$89,992,510
LINN CNTY 3.3788	LINN S/WTR 0.0000	LEB SP UR III 0.1388	ESD WILL 0.2967	LINN CNTY 3.3788	LINN CNTY 3.3788
ESD LBL 0.3049	LEB AQUA CNTR 0.2377	Total 14.3496	CHEM CC 0.9643	ESD WILL 0.2967	ESD LBL 0.3049
LBCC 0.6858	LEB SP UR III 0.1388	<b>Code 9-76</b>	CHEM LIB 0.0818	LBCC 0.6858	LBCC 0.6858
SD #9 7.4801	Total 14.3496	Value \$40,400	SD #29J 5.5247	SD #55 6.6224	SD #55 6.6224
ALBANY R/F 2.1500	<b>Code 9-71</b>	LINN CNTY 3.2033	LYONS R/F 2.5919	SCIO R/F 1.2745	SW HM FIRE/AM 1.5000
GP WTR #2 0.0000	Value \$506,395	ESD LBL 0.3020	LY/MEH WTR 0.9365	LINN S/WTR 0.0000	SW HM CEM 0.2166
LINN S/WTR 0.0000	LINN CNTY 3.3461	SD #9 6.6091	LINN S/WTR 0.0000	Total 11.1605	LINN S/WTR 0.0000
LEB AQUA CNTR 0.2400	ESD LBL 0.3020	LEBANON CTY 5.3566	Total 13.7747	<b>Code 27-12</b>	Total 12.7085
Total 14.2396	LBCC 0.6793	LEBANON R/F 1.9968	<b>Code 27-6</b>	Value \$76,644	<b>Code 55-3</b>
<b>Code 9-66</b>	SD #9 7.4076	LINN S/WTR 0.0000	Value \$410,132	LINN CNTY 3.3788	Value \$9,493,855
Value \$599,489	LEBANON R/F 2.2381	LEB AQUA CNTR 0.2122	LINN CNTY 3.3788	ESD WILL 0.2967	LINN CNTY 3.3788
LINN CNTY 3.3788	GP WTR #2 0.0000	LEB SP UR I 0.7002	ESD WILL 0.2967	LBCC 0.6858	ESD LBL 0.3049
ESD LBL 0.3049	LEB AQUA CNTR 0.2377	LEB SP UR II 2.2673	CHEM CC 0.9643	SD #29J 5.5247	LBCC 0.6858
LBCC 0.6858	LEB SP UR III 0.1388	LEB SP UR III 0.1776	CHEM LIB 0.0818	0.0000	SD #55 6.6224
SD #9 7.4801	Total 14.3496	Total 21.3990	SD #29J 5.5247	Total 9.8860	SW HM CEM 0.2166
TANGENT R/F 2.5739	<b>Code 9-72</b>	<b>Code 27-1</b>	LY/MEH WTR 0.9365	LINN S/WTR 0.0000	LINN S/WTR 0.0000
GP WTR #2 0.0000	Value \$1,793,503	<b>LYONS</b>	LINN S/WTR 0.0000	Total 11.1828	Total 11.2085
LINN S/WTR 0.0000	LINN CNTY 3.2033	Value \$51,221,831	Total 11.1828	<b>Code 27-13</b>	<b>Code 55-4</b>
LEB AQUA CNTR 0.2400	ESD LBL 0.2696	LINN CNTY 3.3788	<b>Code 27-7</b>	Value \$577,262	Value \$15,154,007
Total 14.6635	LBCC 0.6063	ESD WILL 0.2967	Value \$19,452	LINN CNTY 3.3788	LINN CNTY 3.3788
<b>Code 9-67</b>	SD #9 6.6091	CHEM CC 0.9643	LINN CNTY 3.3788	ESD WILL 0.2967	ESD LBL 0.3049
Value \$427,689	LEBANON CTY 5.3566	CHEM LIB 0.0818	ESD WILL 0.2967	LBCC 0.6858	LBCC 0.6858
LINN CNTY 3.3788	LEBANON R/F 1.9968	SD #29J 5.5247	CHEM CC 0.9643	SD #29J 5.5247	SD #55 6.6224
ESD LBL 0.3049	GP WTR #2 0.0000	LYONS CTY 2.8657	CHEM LIB 0.0818	Total 12.4779	LINN S/WTR 0.0000
LBCC 0.6858	LINN S/WTR 0.0000	LYONS R/F 2.5919	SD #29J 5.5247	<b>Code 27-14</b>	Total 10.9919
SD #9 7.4801	LEB AQUA CNTR 0.2122	LYONS CTY 2.8657	LYONS CTY 2.8657	Value \$978,236	<b>Code 55-5</b>
TANGENT R/F 2.5739	LEB SP UR I 0.7002	LINN S/WTR 0.0000	LYONS R/F 2.5919	LINN CNTY 3.3788	Value \$54,900
GP WTR 0.0000	LEB SP UR II 2.2673	Total 16.6404	LINN S/WTR 15.7039	ESD WILL 0.2967	LINN CNTY 3.3788
LINN S/WTR 0.0000	LEB SP UR III 0.1776			LBCC 0.6858	ESD LBL 0.3049
LEB AQUA CNTR 0.2400	Total 21.3990			SD #29J 5.5247	LBCC 0.6858
Total 14.6635				STAYTON R/F 1.6766	SD #55 6.6224
				SANTIAM WTR 0.0000	BRNSVL R/F 1.1985
				LINN S/WTR 0.0000	LINN S/WTR 0.0000
				Total 11.5626	Total 12.1904

Tax rates are shown in dollars per thousand of taxable value. Rates are before Measure 5 compression.

**LINN COUNTY TAX SUMMARY**

**2005-2006**

<b>Code 55-6</b>	<b>Code 55-18</b>	<b>Code 55-27</b>	<b>Code 95-7</b>	<b>Code 95-13</b>	<b>Code 127-5</b>
Value \$79,087,647	Value \$0	Value \$486,814	Value \$758,023	Value \$3,344,646	Value \$13,967,360
LINN CNTY 3.3788	LINN CNTY 3.3788	LINN CNTY 3.3788	LINN CNTY 3.3788	LINN CNTY 3.3788	LINN CNTY 3.3788
ESD LBL 0.3049	ESD LBL 0.3049	ESD LBL 0.3049	ESD LBL 0.3049	ESD LBL 0.3049	ESD LBL 0.3049
LBCC 0.6858	LBCC 0.6858	LBCC 0.6858	LBCC 0.6858	LBCC 0.6858	CHEM CC 0.9643
SD #55 6.6224	SD #55 6.6224	SD #55 6.6224	SD #95 6.6224	SD #95 4.5080	CHEM LIB 0.0818
SW HM FIRE/AM 1.5000	LEBANON R/F 2.2600	SW HM AM 0.3500	SD #95 BNDS 1.1517	SCIO R/F 1.2745	SD #129 4.8880
LINN S/WTR 0.0000	Total 13.2519	SW HM CEM 0.2166	STAYTON R/F 0.2166	LINN S/WTR 1.6766	GATES R/F 2.3000
Total 12.4919		Total 11.5585	LINN S/WTR 0.0000	Total 11.7058	LINN S/WTR 0.0000
	<b>Code 55-21</b>	<b>Code 55-28</b>	<b>Code 95-8</b>	<b>Code 95-14</b>	<b>Code 127-7</b>
<b>Code 55-11</b>	Value \$565,500	Value \$67,622	Value \$22,599,832	Value \$5,205,647	<b>GATES</b>
Value \$5,177,597	LINN CNTY 3.3788	LINN CNTY 3.3788	Value \$22,599,832	LINN CNTY 3.3788	Value \$2,831,287
LINN CNTY 3.3788	ESD LBL 0.3049	ESD LBL 0.3049	LINN CNTY 3.3788	ESD LBL 0.3049	LINN CNTY 3.3788
ESD LBL 0.3049	LBCC 0.6858	LBCC 0.6858	ESD LBL 0.3049	LBCC 0.6858	ESD LBL 0.3049
LBCC 0.6858	SD #55 6.6224	SD #55 6.6224	LBCC 0.6858	SD #95 4.5080	CHEM CC 0.9643
SD #55 6.6224	SW HM CTY 8.3874	SD #55 8.3874	LBCC 0.6858	LYONS R/F 2.5919	CHEM LIB 0.0818
Total 10.9919	SW HM CEM 0.2166	SW HM AM 0.3500	SD #95 4.5080	LINN S/WTR 1.1517	SD #129 4.8880
	LINN S/WTR 0.0000	MOHAWK R/F 2.5451	SD #95 BNDS 1.1517	Total 11.4694	GATES CTY 0.4668
<b>Code 55-12</b>	Total 19.5959	LINN S/WTR 0.0000	SCIO R/F 1.2745	<b>Code 127-1</b>	GATES R/F 2.3000
Value \$6,684,158	<b>Code 55-22</b>	<b>Code 55-29</b>	SANTIAM WTR 13.8870	<b>MILL CITY</b>	LINN S/WTR 0.0000
LINN CNTY 3.3788	Value \$0	Value \$179,770	LINN S/WTR 0.0000	Value \$46,686,655	Total 12.3846
ESD LBL 0.3049	LINN CNTY 3.3788	LINN CNTY 3.3788	Total 11.3037	LINN CNTY 3.3788	<b>Code 127-8</b>
LBCC 0.6858	ESD LBL 0.3049	ESD LBL 0.3049	<b>Code 95-9</b>	ESD LBL 0.3049	Value \$471,669
SD #55 6.6224	LBCC 0.6858	LBCC 0.6858	Value \$823,071	CHEM CC 0.9643	LINN CNTY 3.3788
SW HM CEM 0.2166	SD #55 6.6224	SD #55 6.6224	LINN CNTY 3.3788	CHEM LIB 0.0818	ESD LBL 0.3049
Total 11.2085	SW HM CTY 8.3874	LEBANON R/F 1.5000	ESD LBL 0.3049	SD #129 4.8880	CHEM CC 0.9643
<b>Code 55-13</b>	SW HM FIRE/AM 1.5000	SW HM AM 0.3500	LBCC 0.6858	MILL CTY 4.1578	CHEM LIB 0.0818
Value \$50,517,751	SW HM CEM 0.2166	SW HM AM 0.3500	SD #95 4.5080	MIL CTY R/F 1.9348	SD #129 4.8880
LINN CNTY 3.3788	Total 21.0959	Total 13.6019	SD #95 BNDS 1.1517	LINN S/WTR 1.6766	IDANHA R/F 1.6592
ESD LBL 0.3049	<b>Code 55-23</b>	<b>Code 79-1</b>	STAYTON R/F 1.6766	Total 11.7058	LINN S/WTR 0.0000
LBCC 0.6858	Value \$425,601	Value \$54,441	SANTIAM WTR 0.0000	<b>Code 127-2</b>	Total 11.2770
SD #55 6.6224	LINN CNTY 3.3788	LINN CNTY 3.3788	LINN S/WTR 0.0000	Value \$26,568,642	<b>Code 127-9</b>
SW HM FIRE/AM 1.5000	ESD LBL 0.3049	ESD LANE 0.2232	Total 11.7058	LINN CNTY 3.3788	IDANHA
SW HM CEM 0.2166	LBCC 0.6858	LANE CC 0.8814	<b>Code 95-10</b>	ESD LBL 0.3049	Value \$2,281,959
Total 12.7085	SD #55 6.6224	SD #79 4.6687	Value \$26,522,924	CHEM CC 0.9643	LINN CNTY 3.3788
<b>Code 55-15</b>	SW HM AM 0.3500	LINN S/WTR 0.0000	LINN CNTY 3.3788	CHEM LIB 0.0818	ESD LBL 0.3049
Value \$11,649,876	SW HM CEM 0.2166	Total 9.1521	ESD LBL 0.3049	SD #129 4.8880	CHEM CC 0.9643
LINN CNTY 3.3788	LINN S/WTR 0.0000	<b>Code 95-2</b>	LBCC 0.6858	MIL CTY R/F 1.9348	CHEM LIB 0.0818
ESD LBL 0.3049	Total 11.5585	Value \$127,142,268	SD #95 4.5080	LINN S/WTR 11.5526	SD #129 4.8880
LBCC 0.6858	<b>Code 55-24</b>	LINN CNTY 3.3788	SD #95 BNDS 1.1517	Total 11.5526	IDANHA CTY 2.5029
SD #55 6.6224	Value \$57,343,220	ESD LBL 0.3049	SCIO CTY 4.9057	<b>Code 127-3</b>	IDANHA R/F 1.6592
SW HM FIRE/AM 1.5000	LINN CNTY 3.3788	LBCC 0.6858	SCIO R/F 1.2745	Value \$25,607,411	LINN S/WTR 0.0000
Total 12.4919	ESD LBL 0.3049	SD #95 4.5080	LINN S/WTR 0.0000	LINN CNTY 3.3788	Total 13.7799
<b>Code 55-16</b>	LBCC 0.6858	SD #95 BNDS 1.1517	Total 16.2094	ESD LBL 0.3049	<b>Code 127-10</b>
Value \$0	SD #55 6.6224	SCIO R/F 1.2745	<b>Code 95-11</b>	CHEM CC 0.9643	Value \$25,210
LINN CNTY 3.3788	SW HM AM 0.3500	LINN S/WTR 11.3037	Value \$1,900	CHEM LIB 0.0818	LINN CNTY 3.3788
ESD LBL 0.3049	LINN S/WTR 0.0000	<b>Code 95-3</b>	LINN CNTY 3.3788	SD #129 4.8880	ESD LBL 0.3049
LBCC 0.6858	Total 11.3419	Value \$7,700,012	ESD LBL 0.3049	LINN S/WTR 0.0000	CHEM CC 0.9643
SD #55 6.6224	<b>Code 55-25</b>	LINN CNTY 3.3788	LBCC 0.6858	Total 9.6178	CHEM LIB 0.0818
MOHAWK R/F 2.5451	Value \$2,783,080	ESD LBL 0.3049	SD #95 4.5080	<b>Code 127-4</b>	SD #129 4.8880
LINN S/WTR 0.0000	LINN CNTY 3.3788	LBCC 0.6858	SCIO CTY 4.9057	Value \$11,609,854	IDANHA CTY 2.5029
Total 13.5370	ESD LBL 0.3049	SD #95 4.5080	SCIO R/F 1.2745	LINN CNTY 3.3788	LINN S/WTR 0.0000
<b>Code 55-17</b>	LBCC 0.6858	SD #95 BNDS 1.1517	SANTIAM WTR 0.0000	ESD LBL 0.3049	Total 12.1207
Value \$107,116	SD #55 6.6224	LINN S/WTR 0.0000	LINN S/WTR 0.0000	CHEM CC 0.9643	<b>Code 140-12</b>
LINN CNTY 3.3788	BRNSVL R/F 1.1985	Total 10.0292	Total 16.2094	CHEM LIB 0.0818	Value \$247,139
ESD LBL 0.3049	SW HM AM 0.3500	<b>Code 95-4</b>	<b>Code 95-12</b>	SD #129 4.8880	LYONS R/F 2.5919
LBCC 0.6858	LINN S/WTR 0.0000	Value \$1,125,660	Value \$1,811,735	LINN S/WTR 0.0000	ESD WILL 0.2967
SD #55 6.6224	Total 12.5404	LINN CNTY 3.3788	LINN CNTY 3.3788	Total 12.2097	LBCC 0.6858
LEBANON R/F 2.2600	<b>Code 55-26</b>	ESD LBL 0.3049	ESD LBL 0.3049		SD #14 5.1516
LINN S/WTR 0.0000	Value \$3,256,225	LBCC 0.6858	LBCC 0.6858		SCIO R/F 1.2745
Total 13.2519	LINN CNTY 3.3788	SD #95 4.5080	SD #95 4.5080		JEFF PARK 0.2914
	ESD LBL 0.3049	SD #95 BNDS 1.1517	LINN S/WTR 0.0000		LINN S/WTR 0.0000
	LBCC 0.6858	SCIO R/F 1.2745	Total 8.8775		Total 11.0788
	SD #55 6.6224	SCIO R/F 1.2745			
	SW HM AM 0.3500	S SANT WTR 1.0044			
	Total 11.3419	LINN S/WTR 0.0000			
		Total 12.3081			

Tax rates are shown in dollars per thousand of taxable value. Rates are before Measure 5 compression.



**LINN COUNTY TAX SUMMARY**

**2005-2006**

Code 140-13	Code 140-18	Code 509-3	Code 552-3	Code 552-8	Code 552-12
Value \$25,713	Value \$1,764,228	Value \$7,306,403	Value \$89,484,932	Value \$373,570	<b>HALSEY</b>
LINN CNTY 3.3788	LINN CNTY 3.3788	LINN CNTY 3.3788	LINN CNTY 3.3788	LINN CNTY 3.3788	Value \$29,754,487
ESD WILL 0.2967	ESD WILL 0.2967	ESD LBL 0.3049	ESD LBL 0.3049	ESD LBL 0.3049	LINN CNTY 3.3788
LBCC 0.6858	LBCC 0.6858	LBCC 0.6858	LBCC 0.6858	LBCC 0.6858	ESD LBL 0.3049
SD #14J 5.1516	SD #14J 5.1516	SD #509J 4.6519	SD #552 5.2550	SD #552 5.2550	LBCC 0.6858
SCIO R/F 1.2745	JEFFSN R/F 1.2745	SD #509J BNDS 1.5856	BRNSVL R/F 1.1985	SW HM FIRE/AM 1.5000	SD #552 5.2550
JEFF PARK 0.2914	JEFF PARK 0.2914	ALBANY R/F 2.1500	LINN S/WTR 0.0000	LINN S/WTR 0.0000	HALSEY CTY 8.0473
S SANT WTR 1.0044	S SANT WTR 1.0044	LINN S/WTR 0.0000	Total 12.7570	Total 10.8230	HLY/SHD R/F 0.9894
LINN S/WTR 0.0000	LINN S/WTR 0.0000	Total 12.5779		Total 11.1245	LINN S/WTR 0.0000
Total 12.0832	Total 12.5779			Total 18.6612	Total 18.6612
		<b>Code 509-4</b>	<b>Code 552-4</b>	<b>Code 552-9</b>	
		Value \$200,081	Value \$96,060,263	Value \$269,561	
<b>Code 140-14</b>	<b>Code 140-19</b>	LINN CNTY 3.3788	LINN CNTY 3.3788	LINN CNTY 3.3788	<b>Code 552-14</b>
Value \$87,600	Value \$8,553,941	ESD LBL 0.3049	ESD LBL 0.3049	ESD LBL 0.3049	Value \$6,858,943
LINN CNTY 3.3788	LINN CNTY 3.3788	LBCC 0.6858	LBCC 0.6858	LBCC 0.6858	LINN CNTY 3.3788
ESD WILL 0.2967	ESD WILL 0.2967	SD #509J 4.6519	SD #552 5.2550	SD #552 5.2550	ESD LBL 0.3049
LBCC 0.6858	LBCC 0.6858	SD #509J BNDS 1.5856	HLY/SHD R/F 0.9894	LTL MUD WTR 0.0000	LBCC 0.6858
SD #14J 5.1516	SD #14J 5.1516	TANGENT R/F 2.5739	LINN S/WTR 0.0000	LINN S/WTR 0.0000	SD #552 5.2550
JEFF PARK 0.2914	JEFFSN R/F 1.7692	LINN S/WTR 0.0000	Total 13.1809	Total 10.6139	HLY/SHD R/F 0.9894
LINN S/WTR 0.0000	JEFF PARK 0.2914	Total 13.5318			OAKV C/CNTR 0.0000
Total 9.8043	DEV/CON WTR 1.9583		<b>Code 552-5</b>	<b>Code 552-10</b>	LINN S/WTR 0.0000
	LINN S/WTR 0.0000		Value \$4,375,993	Value \$8,319,005	Total 10.6139
	Total 9.8043		LINN CNTY 3.3788	LINN CNTY 3.3788	
<b>Code 140-15</b>	<b>Code 140-20</b>	<b>Code 509-5</b>	ESD LBL 0.3049	ESD LBL 0.3049	<b>Code 552-15</b>
Value \$2,752,010	Value \$197,659	Value \$274,941	LBCC 0.6858	LBCC 0.6858	Value \$177,000
LINN CNTY 3.3788	LINN CNTY 3.3788	LINN CNTY 3.3788	SD #552 5.2550	SD #552 5.2550	LINN CNTY 3.3788
ESD WILL 0.2967	ESD WILL 0.2967	ESD LBL 0.3049	TANGENT R/F 2.5739	HLY/SHD R/F 0.9894	ESD LBL 0.3049
LBCC 0.6858	ESD WILL 0.2967	SD #509J 4.6519	LINN S/WTR 0.0000	LTL MUD WTR 0.0000	LBCC 0.6858
SD #14J 5.1516	LBCC 0.6858	SD #509J BNDS 1.5856	Total 11.5964	Total 12.1984	SD #552 5.2550
SCIO R/F 1.2745	SD #14J 5.1516	HLY/SHD R/F 0.9894			OAKV C/CNTR 0.0000
JEFF PARK 0.2914	SD #14J 5.1516	LINN S/WTR 0.0000	<b>Code 552-6</b>	<b>Code 552-11</b>	LINN S/WTR 0.0000
SANTIAM WTR 0.0000	MILRSBG CTY 0.0000	Total 11.5964	Value \$1,748,659	Value \$1,872,744	Total 9.6245
LINN S/WTR 0.0000	JEFFSN R/F 1.7692		LINN CNTY 3.3788	LINN CNTY 3.3788	
Total 11.0788	JEFF PARK 0.2914		ESD LBL 0.3049	ESD LBL 0.3049	<b>Code 552-19</b>
	LINN S/WTR 0.0000		LBCC 0.6858	LBCC 0.6858	<b>BROWNSVILLE</b>
	Total 11.0788		SD #552 5.2550	SD #552 5.2550	Value \$59,349,381
<b>Code 140-16</b>	<b>Code 509-1</b>	<b>Code 509-6</b>	HARSBRG R/F 1.1299	SD #552 5.2550	LINN CNTY 3.3788
Value \$5,376,490	Value \$87,356,434	Value \$10,124,518	LINN S/WTR 0.0000	HARSBRG R/F 0.0000	ESD LBL 0.3049
LINN CNTY 3.3788	LINN CNTY 3.3788	LINN CNTY 3.3788	Total 10.7544	LTL MUD WTR 0.0000	LBCC 0.6858
ESD WILL 0.2967	Value \$87,356,434	BENTON LIB 0.3947		LINN S/WTR 0.0000	SD #552 5.2550
LBCC 0.6858	ESD LBL 0.3049	SD #509J 4.6519	<b>Code 552-7</b>	Total 10.7544	SD #552 5.2550
SD #14J 5.1516	LBCC 0.6858	SD #509J BNDS 1.5856	Value \$8,946,541		BRNSVL CTY 7.9412
JEFFSN R/F 1.7692	SD #509J 4.6519	LINN S/WTR 0.0000	LINN CNTY 3.3788		BRNSVL R/F 1.1985
JEFF PARK 0.2914	SD #509J BNDS 1.5856	Total 11.0017	ESD LBL 0.3049		LINN S/WTR 0.0000
LINN S/WTR 0.0000	CORVLS R/F 2.1140		LBCC 0.6858		Total 18.7642
Total 11.5735	LINN S/WTR 0.0000		SD #552 5.2550		
	Total 11.5735		LINN S/WTR 0.0000		<b>Code 552-20</b>
<b>Code 140-17</b>	<b>Code 509-2</b>	<b>Code 552-2</b>	Total 9.6245		Value \$190,603,695
Value \$3,334,247	Value \$587,771	Value \$3,556,980			LINN CNTY 3.3788
LINN CNTY 3.3788	LINN CNTY 3.3788	LINN CNTY 3.3788			ESD LBL 0.3049
ESD WILL 0.2967	ESD LBL 0.3049	ESD LBL 0.3049			LBCC 0.6858
LBCC 0.6858	ESD LBL 0.3049	LBCC 0.6858			SD #552 5.2550
SD #14J 5.1516	LBCC 0.6858	SD #552 5.2550			HLY/SHD R/F 0.9894
JEFFSN R/F 1.7692	SD #509J 4.6519	HALSEY CTY 8.0473			LINN S/WTR 0.0000
JEFF PARK 0.2914	SD #509J BNDS 1.5856	LINN S/WTR 0.0000			EM PUD 0.0000
SANTIAM WTR 0.0000	LINN S/WTR 0.0000	Total 17.6718			Total 10.6139
LINN S/WTR 0.0000	Total 11.5735				
Total 11.5735	Total 11.5735				

Tax rates are shown in dollars per thousand of taxable value. Rates are before Measure 5 compression.

Location:

Linn County Courthouse, Room 215

Phone:

(541) 967-3808

Mailing Address:

Linn County Assessment & Taxation

PO Box 100

Albany OR 97321

Visit the Linn County web site at  
[www.co.linn.or.us](http://www.co.linn.or.us)

~ District Abbreviations ~

ALBANY CTY	Albany City	JEFF PARK	Jefferson Park Rec. Dist.	SCIO CTY	Scio City
ALBANY R/F	Albany Rural Fire Dist.	JEFFSN R/F	Jefferson Rural Fire Dist.	SCIO R/F	Scio Rural Fire Dist.
ALBANY UR	Albany Urban Renewal	LANE CM COL	Lane Community College	SD #1	Monroe School Dist
BENTON LIB	Benton County Library	LBCC	Linn-Benton Community College	SD #127	Santiam Canyon School Dist
BRNSVL CTY	Brownsville City	LEB AQUA CNTR	Lebanon Aquatic Center	SD #14	Jefferson School Dist.
BRNSVL R/F	Brownsville Rural Fire Dist.	LEB UR I	Lebanon Urban Renewal I	SD #29	North Santiam School Dist
CHEM CM COL	Chemeketa Community College	LEB UR II	Lebanon Urban Renewal II	SD #4	Eugene School Dist.
CHEM LIBRARY	Chemeketa CC Library	LEB UR III	Lebanon Urban Renewal III	SD #509	Corvallis School Dist.
CORVLS R/F	Corvallis Rural Fire Dist.	LEBANON CTY	Lebanon City	SD #55	Sweet Home School Dist.
DEV/CON WTR	Dever Conner Water Dist.	LEBANON R/F	Lebanon Rural Fire Dist.	SD #552	Central Linn School Dist.
EM PUD	Emerald Peoples Util. Dist.	LINN CNTY	Linn County	SD #7	Harrisburg School Dist.
ESD LANE	Lane Ed Serv Dist	LINN SWTR	Linn Soil & Water Conserv. Dist.	SD #79	Marcola School Dist.
ESD LBL	Linn Benton Lincoln ESD	LTL MUD WTR	Little Muddy Creek Water Dist	SD #8	Albany School Dist.
ESD WILL	Willamette Reginal ESD	LY/MEH WTR	Lyons/Mehama Water Dist.	SD #9	Lebanon Community School Dist.
GATES CTY	Gates City	LYONS CTY	Lyons City	SD #95	Scio School Dist.
GATES R/F	Gates Rural Fire Dist.	LYONS R/F	Lyons Rural Fire Dist.	SODAVLE CTY	Sodaville City
GP WTR	Grand Prairie Water Control Dist.	MIL CTY R/F	Mill City Rural Fire Dist.	STAYTON R/F	Stayton Rural Fire Dist.
GP WTR #2	Grand Prairie Water Control Dist. #2	MILL CTY	Mill City	SW HM CEM	Sweet Home Cemetery Dist.
HALSEY CTY	Halsey City	MILRSBG CTY	Millersburg City	SW HM CTY	Sweet Home City
HARRSBG CTY	Harrisburg City	MOHAWK R/F	Mohawk Valley Rural Fire Dist.	SW HM FIRE/AM	Sweet Home Fire & Amb Dist Zone 1
HARSBRG R/F	Harrisburg Rural Fire Dist.	N LEB WTR	North Lebanon Water Dist.	SW HM AM	Sweet Home Fire & Amb Dist Zone 2
HLY/SHD R/F	Halsey/Shed Rural Fire Dist.	OAK C/CNTR	Oak Creek Community Center Dist.	TANGENT CTY	Tangent City
HRSBRG UR	Harrisburg Urban Renewal	S SANT WTR	South Santiam Water Dist.	TANGENT R/F	Tangent Rural Fire Dist.
IDANHA CTY	Idanha City	SANTIAM WTR	Santiam Water Dist.	WTRLOO CTY	Waterloo City
IDANHA R/F	Idanha Rural Fire Dist.				

This summary is designed to provide information about the current Assessment and Tax Roll. More detailed or specific information is available from our office, located in room 215 of the County Courthouse at 300 4th Ave SW in Albany.

If you have questions concerning property you own or more general questions about the property tax system, you are welcome to discuss your situation with a member of our staff. If you are eligible for a program to help reduce your property taxes, we will gladly help in any way we can.

Ad valorem taxes are based on the assessed value of your property as of January 1st. Those taxes provide funds for the operation of schools, cities, fire districts, and other miscellaneous taxing districts.

The Assessor does not tax, but values your property through methods prescribed by state law and regulation. The Assessor does not determine the amount of money your taxing district receives. To control spending, you should take an active interest in local budget meetings and elections. You are, in effect, purchasing services with your tax dollars.

Taxes are due and payable in three installments. The first third is due on November 15th, the second third on February 15th, and the final third on May 15th. A three percent discount will be allowed on taxes paid in full on or before November 15th. A two percent discount will be allowed if two-thirds of the total taxes are paid on or before November 15th. No discount will be allowed on taxes paid after November 15th. Interest at a rate of 1-1/3% per month or fraction of a month will be charged on any payment made after the installment due date.

By law this office must credit your property tax payments to the earliest year for which taxes are due on your property. In order to receive a discount on your current year's bill, all prior year's taxes, penalties and interest must first be fully paid.

I, Mark Noakes, Linn County Assessor/Tax Collector, State of Oregon, do hereby certify that the assessed valuations, tax levies and taxes set forth herein contained, are true and correct copies of the originals, as the same appears on file in my office and custody.

**Mark Noakes**

Linn County Assessor / Tax Collector