



# 2010-2011



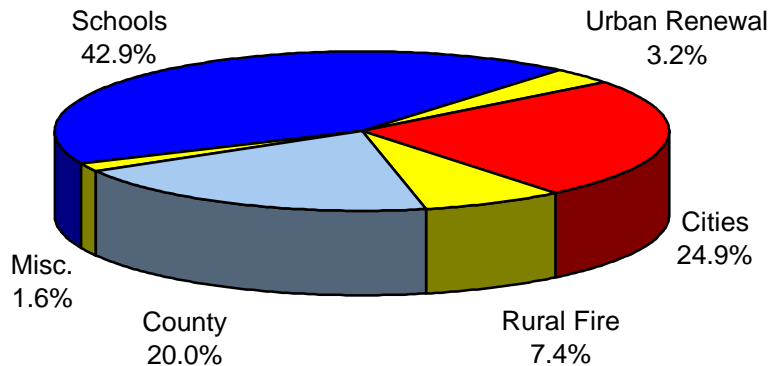
## SUMMARY OF ASSESSMENT AND TAX ROLL - LINN COUNTY, OREGON

### VALUATION for Tax Year beginning July 1, 2010

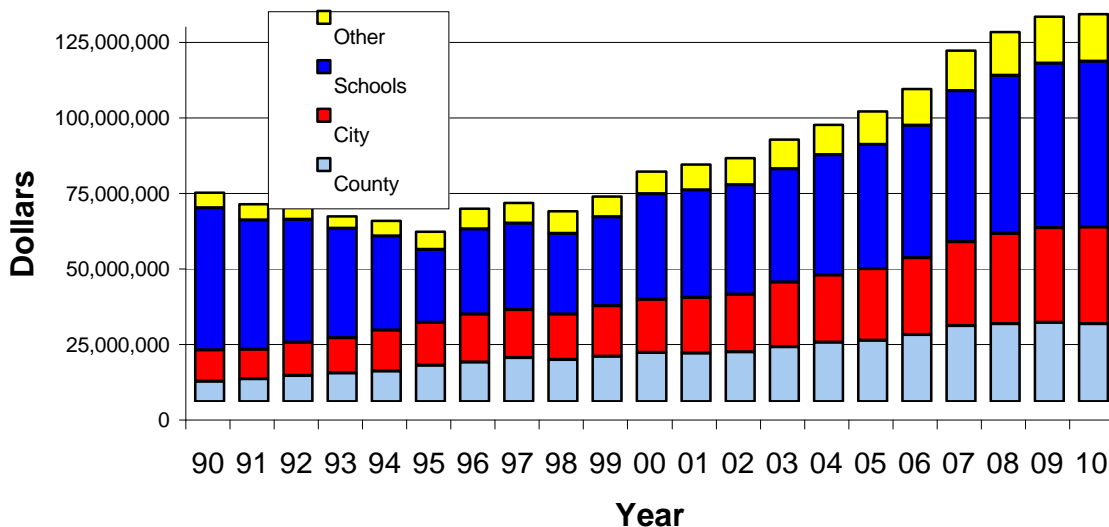
	Real Market Value	Assessed Value	Service Exemption	Taxable Value
Real Property	10,813,077,910	7,223,110,254	24,421,372	7,198,688,882
Manufactured Structures	124,884,400	112,987,610	1,789,138	111,198,472
Personal Property	241,897,470	241,897,470		241,897,470
Public Utilities	322,363,555	317,521,082		317,521,082
<b>Total</b>	<b>11,502,223,335</b>	<b>7,895,516,416</b>	<b>26,210,510</b>	<b>7,869,305,906</b>

Real Market Value (RMV) is an estimate of selling prices.  
 Assessed Value (AV) is the value as calculated under Measure 50.  
 Taxable Value is Assessed Value less Disabled Veteran's and Active Service Exemptions.

### DISTRIBUTION of TAX DOLLARS



### TAX DOLLARS by YEAR



**ASSESSMENT & TAXES by DISTRICT**

	REAL MARKET VALUE	TAXABLE VALUE	LESS URBAN RENEWAL	TOTAL VALUE TO COMPUTE TAX RATES	MAXIMUM TAX RATE	TAXES IMPOSED
<b>COUNTY</b>	11,502,223,335	7,869,305,906	211,917,071	7,657,388,835	3.6136	25,665,971.65
<b>CITIES</b>						
Albany	3,275,687,464	2,720,366,416	101,564,871	2,618,801,545	7.8092	20,875,222.65
Brownsville	114,734,331	81,982,628		81,982,628	11.0023	901,923.56
Gates	3,959,747	3,278,251		3,278,251	0.5698	1,867.97
Halsey	59,002,748	46,527,791		46,527,791	6.7303	313,146.22
Harrisburg	221,284,207	170,328,776	14,737,905	155,590,871	3.5211	599,736.30
Idanha	4,135,284	3,039,678		3,039,678	2.5029	7,608.06
Lebanon	1,064,315,693	838,150,542	92,650,061	745,500,481	6.3149	5,213,507.69
Lyons	95,574,342	68,792,525		68,792,525	2.7647	190,190.66
Mill City	77,609,207	60,473,459		60,473,459	4.1578	251,436.58
Millersburg	477,209,267	413,598,058		413,598,058	1.7000	703,116.83
Scio	48,305,425	38,270,022		38,270,022	4.9057	187,741.16
Sodaville	16,869,067	13,200,624		13,200,624	0.4552	6,008.86
Sweet Home	484,108,919	367,850,186		367,850,186	8.7010	2,697,739.94
Tangent	164,956,338	0		0	0.0000	0.00
Waterloo	11,818,581	0		0	0.0000	0.00
<b>TOTAL</b>						<b>31,949,246.48</b>
<b>RURAL FIRE PROTECTION DISTRICTS</b>						
Albany	734,574,975	533,431,626		533,431,626	2.1500	1,146,877.61
Brownsville	375,829,102	200,253,172		200,253,172	2.2213	444,808.22
Corvallis	172,821,661	120,943,808		120,943,808	2.1140	255,674.88
Gates	34,338,576	20,625,882		20,625,882	2.3000	47,439.50
Halsey/Shedd	639,628,530	355,513,719		355,513,719	0.9894	351,744.50
Harrisburg	550,814,326	310,798,793	14,744,405	296,054,388	1.1299	334,519.51
Idanha	5,950,014	4,048,673		4,048,673	1.6592	6,717.62
Jefferson	455,723,617	272,126,192		272,126,192	1.1955	325,326.65
Lebanon	2,254,743,998	1,558,397,115	95,598,320	1,462,798,795	2.4832	3,616,303.32
Lyons	241,237,827	159,952,680		159,952,680	2.3751	379,903.47
Mill City	109,893,766	84,517,506		84,517,506	1.9348	163,524.08
Monroe	6,110	1,570		1,570	0.0000	0.00
Mohawk	129,940	77,540		77,540	1.9126	148.30
Scio	603,123,257	308,067,985		308,067,985	1.2745	392,631.95
Stayton	162,114,298	84,404,680		84,404,680	1.5827	133,587.09
Sw Hm Fire/Am	954,349,494	653,036,114		653,036,114	1.8698	1,221,063.18
Sw Hm Am	117,371,610	74,060,948		74,060,948	0.3500	25,921.44
Tangent	395,224,193	233,290,863		233,290,863	2.5739	600,466.24
<b>TOTAL</b>						<b>9,446,657.56</b>
<b>SCHOOL DISTRICTS</b>						
Albany	4,905,280,693	3,796,569,257	101,564,871	3,695,004,386	6.2160	22,777,266.47
Central Linn	989,271,204	546,533,145		546,533,145	5.0345	2,669,006.32
Corvallis	181,962,048	124,605,769		124,605,769	7.6546	864,273.94
Eugene	15,534,729	9,716,833		9,716,833	7.5509	71,371.41
Harrisburg	543,810,329	303,569,051	14,744,405	288,824,646	6.1666	1,763,691.53
Jefferson	65,158,102	28,851,568		28,851,568	4.8468	135,860.54
Lebanon	2,357,432,466	1,661,886,164	95,607,795	1,566,278,369	7.0185	10,846,810.46
Marcola	271,640	62,460		62,460	4.6687	291.61
Monroe	6,110	1,570		1,570	0.0000	0.00
N Santiam	385,622,361	228,752,376		228,752,376	5.0444	1,143,628.05
Santiam Can	230,550,019	155,676,775		155,676,775	4.8880	742,843.60
Scio	490,853,187	247,759,231		247,759,231	5.4266	1,322,549.66
Sweet Home	1,183,645,258	765,321,707		765,321,707	6.6324	4,969,320.86
<b>TOTAL</b>						<b>47,306,914.45</b>

**LINN COUNTY TAX SUMMARY**

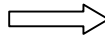
**2010-2011**

	REAL MARKET VALUE	TAXABLE VALUE	LESS URBAN RENEWAL	TOTAL VALUE TO COMPUTE TAX RATES	MAXIMUM TAX RATE	TAXES IMPOSED
<b>EDUCATIONAL SERVICE DISTRICTS</b>						
Lane	15,806,369	9,779,293		9,779,293	0.2232	2,181.70
Linn Ben Linc	11,035,636,503	7,601,922,669	211,917,071	7,390,005,598	0.3049	2,214,815.45
Willamette	450,780,463	257,603,944		257,603,944	0.2967	75,492.94
TOTAL						2,292,490.09
<b>COMMUNITY COLLEGES and LIBRARIES</b>						
Chemeketa CC	448,085,688	297,523,361		297,523,361	0.7932	232,418.59
Lane CC	559,616,698	313,348,344	14,744,405	298,603,939	0.8589	257,706.64
Linn Benton CC	10,494,520,949	7,258,434,201	197,172,666	7,061,261,535	0.6736	4,699,528.58
Benton Lib	16,208,940	12,373,757		12,373,757	0.3947	4,883.94
Chemeketa Lib	448,085,688	297,523,361		297,523,361	0.0818	24,337.38
TOTAL						5,218,875.13
<b>MISCELLANEOUS DISTRICTS</b>						
4H Extension	11,502,223,335	7,869,305,906	211,917,071	7,657,388,835	0.0520	397,666.94
Dev/Con Wtr	40,519,345	18,321,802		18,321,802	0.1614	2,957.04
Jef Pk Rec	65,441,442	29,082,108		29,082,108	0.2914	8,474.42
Leb Aqua Cntr	2,510,257,655	1,661,886,164	95,607,795	1,566,278,369	0.2400	372,357.56
Lyons/Meh Wtr	129,287,649	95,838,675		95,838,675	0.3990	38,239.74
N Lebanon Wtr	147,048,000	81,986,417		81,986,417	0.1420	11,601.89
Sw Hm Cem	826,082,140	559,717,328		559,717,328	0.2166	121,234.58
S Santiam Wtr	31,570,392	11,509,387		11,509,387	1.0044	11,560.11
TOTAL						964,092.28
<b>URBAN RENEWAL DISTRICTS</b>						
Albany	3,275,687,464	2,619,857,693		2,619,857,693	0.6059	1,601,635.05
Harrisburg	221,290,707	163,938,783		163,938,783	1.4530	247,477.84
Lebanon II	1,070,681,945	826,091,074		826,091,074	2.3270	1,914,062.06
Lebanon III	1,080,094,616	834,444,145		834,444,145	0.3065	237,602.19
Lebanon IV	1,064,315,693	824,012,377		824,012,377	0.1732	142,157.46
TOTAL						4,142,934.60

**SPECIAL ASSESSMENTS**

DELINQUENT SEWER ASSESSMENTS:

Albany	31,188.28
Brownsville	3,007.45
Halsey	76.70
Lebanon	17,300.11
Millersburg	3,429.64
Sweet Home	32,920.44
Tangent	958.67
TOTAL	88,881.29



Forest Patrol	163,766.83
Forest Patrol Surcharge	105,497.50
Little Muddy Creek Water Control	6,699.98
Fertile District Imp Co	3,275.99
Grand Prairie Water Control Dist.	20,441.46
Grand Prairie Water Control Dist. #	197,257.60
Mobile Home Ombudsman Fee	25,174.18
Additional Farmland Tax	65,403.29
Additional Forestland Tax	2,089.93
Delinquent Sewer	88,881.29
TOTAL	678,488.05

Corrections	344,111.95
Late Filing Penalties	69,926.63

**TOTAL IMPOSED AD VALOREM TAXES AND ASSESSMENTS** 128,079,708.87

**IMPOSED AD VALOREM TAX BY PROPERTY TYPE**

REAL PROPERTY	117,945,496.12
PERSONAL PROPERTY	3,849,833.15
MANUFACTURED STRUCTURES	1,669,135.37
UTILITIES	4,615,244.23
TOTAL	128,079,708.87

**LINN COUNTY TAX SUMMARY**

**2010-2011**

<b>Code 101</b> Value \$1,570 LINN CNTY 3.6136 ESD LBL 0.3049 LBCC 0.6736 MONROE SD 0.0000 MONROE RFD 0.0000 4H EXT 0.0520 Total 4.6441	<b>Code 707</b> Value \$32,669,450 LINN CNTY 3.6136 ESD LBL 0.3049 LANE CC 0.8589 HARSBG SD 6.1666 HARSBG RFD 1.1299 LINN S/WTR 0.0000 4H EXT 0.0520 Total 12.1259	<b>Code 801</b> <b>ALBANY</b> Value \$1,983,313,663 LINN CNTY 3.4788 ESD LBL 0.2956 LBCC 0.6530 ALBANY SD 6.0247 ALBANY CTY 7.8092 LINN S/WTR 0.0000 4H EXT 0.0501 ALBANY UR 0.6059 Total 18.9173	<b>Code 807</b> Value \$134,058,127 LINN CNTY 3.6136 ESD LBL 0.3049 LBCC 0.6736 ALBANY SD 6.2160 MILRSBG CTY 1.7000 JEFFRSN RFD 1.1955 LINN S/WTR 0.0000 4H EXT 0.0520 Total 13.7556	<b>Code 814</b> Value \$1,652,436 LINN CNTY 3.6136 ESD LBL 0.3049 LBCC 0.6736 ALBANY SD 6.2160 HLY/SHD RFD 0.9894 LINN S/WTR 0.0000 4H EXT 0.0520 Total 11.8495	<b>Code 820</b> Value \$2,672,458 LINN CNTY 3.6136 ESD LBL 0.3049 LBCC 0.6736 ALBANY SD 6.2160 SCIO RFD 1.2745 N LEB WTR 0.1420 LINN S/WTR 0.0000 4H EXT 0.0520 Total 12.2766
<b>HARRISBURG</b> Value \$151,856,086 LINN CNTY 3.5034 ESD LBL 0.2786 LANE CC 0.8054 HARSBG SD 5.6329 HARSBG CTY 3.5211 HARSBG RFD 1.0321 LINN S/WTR 0.0000 4H EXT 0.0475 HARSBG UR 1.4530 Total 16.2740	<b>Code 708</b> Value \$18,339,170 LINN CNTY 3.5034 ESD LBL 0.2786 LANE CC 0.8054 HARSBG SD 5.6329 HARSBG CTY 3.5211 HARSBG RFD 1.0321 LINN S/WTR 0.0000 4H EXT 0.0475 HARSBG UR 1.4530 Total 16.2740	<b>Code 802</b> Value \$114,710,993 LINN CNTY 3.6136 ESD LBL 0.3049 LBCC 0.6736 ALBANY SD 6.2160 ALBANY RFD 2.1500 LINN S/WTR 0.0000 4H EXT 0.0520 Total 13.0101	<b>Code 808</b> Value \$100,763,949 LINN CNTY 3.6136 ESD LBL 0.3049 LBCC 0.6736 ALBANY SD 6.2160 TANGENT RFD 2.5739 LINN S/WTR 0.0000 4H EXT 0.0520 Total 13.4340	<b>Code 815</b> Value \$799,373 LINN CNTY 3.6136 ESD LBL 0.3049 LBCC 0.6736 ALBANY SD 6.2160 LEBANON RFD 2.4832 LINN S/WTR 0.0000 4H EXT 0.0520 Total 13.3433	<b>Code 821</b> Value \$9,353,560 LINN CNTY 3.6136 ESD LBL 0.3049 LBCC 0.6736 ALBANY SD 6.2160 ALBANY RFD 2.1500 N LEB WTR 0.1420 LINN S/WTR 0.0000 4H EXT 0.0520 Total 13.1521
<b>Code 702</b> Value \$73,226,524 LINN CNTY 3.6136 ESD LBL 0.3049 LANE CC 0.8589 HARSBG SD 6.1666 HARSBG RFD 1.1299 LINN S/WTR 0.0000 4H EXT 0.0520 Total 12.1259	<b>Code 709</b> Value \$19,451,819 LINN CNTY 3.6136 ESD LBL 0.3049 LANE CC 0.8589 HARSBG SD 6.1666 HARSBG RFD 1.1299 LINN S/WTR 0.0000 4H EXT 0.0520 Total 12.1259	<b>Code 803</b> Value \$6,370,519 LINN CNTY 3.6136 ESD LBL 0.3049 LBCC 0.6736 ALBANY SD 6.2160 LINN S/WTR 0.0000 4H EXT 0.0520 Total 10.8601	<b>Code 809</b> Value \$95,622,579 LINN CNTY 3.6136 ESD LBL 0.3049 LBCC 0.6736 ALBANY SD 6.2160 JEFFRSN RFD 1.1955 LINN S/WTR 0.0000 4H EXT 0.0520 Total 12.0556	<b>Code 816</b> Value \$12,543,069 LINN CNTY 3.6136 ESD LBL 0.3049 LBCC 0.6736 ALBANY SD 6.2160 CORVLS RFD 2.1140 LINN S/WTR 0.0000 4H EXT 0.0520 Total 12.9741	<b>Code 822</b> Value \$55,913 LINN CNTY 3.6136 ESD LBL 0.3049 LBCC 0.6736 ALBANY SD 6.2160 N LEB WTR 0.1420 LINN S/WTR 0.0000 4H EXT 0.0520 Total 11.0021
<b>Code 703</b> Value \$424,681 LINN CNTY 3.6136 ESD LBL 0.3049 LANE CC 0.8589 HARSBG SD 6.1666 BRNSVL RFD 2.2213 LINN S/WTR 0.0000 4H EXT 0.0520 Total 13.2173	<b>Code 710</b> Value \$58,220 LINN CNTY 3.6136 ESD LBL 0.3049 LANE CC 0.8589 HARSBG SD 6.1666 HARSBG RFD 1.1299 LINN S/WTR 0.0000 4H EXT 0.0520 Total 12.1259	<b>Code 804</b> Value \$40,536,946 LINN CNTY 3.6136 ESD LBL 0.3049 LBCC 0.6736 ALBANY SD 6.2160 ALBANY RFD 2.1500 LINN S/WTR 0.0000 4H EXT 0.0520 Total 13.0101	<b>Code 810</b> Value \$7,085,379 LINN CNTY 3.6136 ESD LBL 0.3049 LBCC 0.6736 ALBANY SD 6.2160 JEFFRSN RFD 1.1955 DEV/CON WTR 0.1614 LINN S/WTR 0.0000 4H EXT 0.0520 Total 12.2170	<b>Code 817</b> Value \$21,351,629 LINN CNTY 3.6136 ESD LBL 0.3049 LBCC 0.6736 ALBANY SD 6.2160 SCIO RFD 1.2745 LINN S/WTR 0.0000 4H EXT 0.0520 Total 12.1346	<b>Code 823</b> Value \$2,975,756 LINN CNTY 3.6136 ESD LBL 0.3049 LBCC 0.6736 ALBANY SD 6.2160 LEBANON RFD 2.4832 N LEB WTR 0.1420 LINN S/WTR 0.0000 4H EXT 0.0520 Total 13.4853
<b>Code 704</b> Value \$1,373,322 LINN CNTY 3.6136 ESD LBL 0.3049 LANE CC 0.8589 HARSBG SD 6.1666 HLY/SHD RFD 0.9894 LINN S/WTR 0.0000 4H EXT 0.0520 Total 11.9854	<b>Code 711</b> Value \$6,500 LINN CNTY 3.5034 ESD LBL 0.2786 LANE CC 0.8054 HARSBG SD 5.6329 HARSBG RFD 1.0321 LINN S/WTR 0.0000 4H EXT 0.0475 HARSBG UR 1.1195 Total 12.4194	<b>MILLERSBURG</b> Value \$275,075,343 LINN CNTY 3.6136 ESD LBL 0.3049 LBCC 0.6736 ALBANY SD 6.2160 MILRSBG CTY 1.7000 ALBANY RFD 2.1500 LINN S/WTR 0.0000 4H EXT 0.0520 Total 14.7101	<b>Code 811</b> <b>TANGENT</b> Value \$114,602,457 LINN CNTY 3.6136 ESD LBL 0.3049 LBCC 0.6736 ALBANY SD 6.2160 TANGENT CTY 0.0000 TANGENT RFD 2.5739 LINN S/WTR 0.0000 4H EXT 0.0520 Total 13.4340	<b>Code 818</b> Value \$2,263,333 LINN CNTY 3.6136 ESD LBL 0.3049 LBCC 0.6736 ALBANY SD 6.2160 ALBANY RFD 2.1500 S SANT WTR 1.0044 LINN S/WTR 0.0000 4H EXT 0.0520 Total 14.0145	<b>Code 824</b> Value \$5,100,908 LINN CNTY 3.6136 ESD LBL 0.3049 LBCC 0.6736 ALBANY SD 6.2160 JEFFRSN RFD 1.1955 S SANT WTR 1.0044 LINN S/WTR 0.0000 4H EXT 0.0520 Total 13.0600
<b>Code 705</b> Value \$5,316,632 LINN CNTY 3.6136 ESD LBL 0.3049 LANE CC 0.8589 HARSBG SD 6.1666 LINN S/WTR 0.0000 4H EXT 0.0520 Total 10.9960	<b>Code 712</b> Value \$133,520 LINN CNTY 3.5034 ESD LBL 0.2786 LANE CC 0.8054 HARSBG SD 5.6329 HARSBG CTY 3.5211 LINN S/WTR 0.0000 4H EXT 0.0475 HARSBG UR 1.3552 Total 15.1441	<b>Code 806</b> Value \$3,869,778 LINN CNTY 3.6136 ESD LBL 0.3049 LBCC 0.6736 ALBANY SD 6.2160 MILRSBG CTY 1.7000 LINN S/WTR 0.0000 4H EXT 0.0520 Total 12.5601	<b>Code 813</b> Value \$491,199 LINN CNTY 3.6136 ESD LBL 0.3049 LBCC 0.6736 ALBANY SD 6.2160 TANGENT CTY 0.0000 LINN S/WTR 0.0000 4H EXT 0.0520 Total 10.8601	<b>Code 819</b> Value \$358,930 LINN CNTY 3.6136 ESD LBL 0.3049 LBCC 0.6736 ALBANY SD 6.2160 SCIO RFD 1.2745 S SANT WTR 1.0044 LINN S/WTR 0.0000 4H EXT 0.0520 Total 13.1390	<b>Code 825</b> Value \$5,080,320 LINN CNTY 3.6136 ESD LBL 0.3049 LBCC 0.6736 ALBANY SD 6.2160 JEFFRSN RFD 1.1955 LINN S/WTR 0.0000 4H EXT 0.0520 Total 12.0556
<b>Code 706</b> Value \$713,127 LINN CNTY 3.6136 ESD LBL 0.3049 LANE CC 0.8589 HARSBG SD 6.1666 LINN S/WTR 0.0000 4H EXT 0.0520 Total 10.9960	Tax rates are shown in dollars per thousand of taxable value. Rates are before Measure 5 compression.				

**LINN COUNTY TAX SUMMARY**

**2010-2011**

<b>Code 826</b> Value \$80,508,487 LINN CNTY 3.6136 ESD LBL 0.3049 LBCC 0.6736 ALBANY SD 6.2160 ALBANY RFD 2.1500 LINN SWTR 0.0000 4H EXT 0.0520 Total 13.0101	<b>Code 834</b> Value \$23,712,514 LINN CNTY 3.6136 ESD LBL 0.3049 LBCC 0.6736 ALBANY SD 6.2160 HLY/SHD RFD 0.9894 OAKVL CNTR 0.0000 LINN SWTR 0.0000 4H EXT 0.0520 Total 11.8495	<b>Code 847</b> Value \$469,090 LINN CNTY 3.4788 ESD LBL 0.2956 LBCC 0.6530 ALBANY SD 6.0247 ALBANY CTY 7.8092 LINN SWTR 0.0000 4H EXT 0.0501 ALBANY UR 0.6059 Total 18.9173	<b>Code 905</b> <b>LEBANON</b> Value \$573,924,142 LINN CNTY 3.4340 ESD LBL 0.2704 LBCC 0.5974 LEBANON SD 6.2212 LEBANON CTY 6.3149 LEBANON RFD 2.2232 LEB AQUA CNTR 0.2129 LINN SWTR 0.0000 4H EXT 0.0463 LEB UR II 2.3270 LEB UR III 0.3065 LEB UR IV 0.1732 Total 22.1270	<b>Code 916</b> Value \$13,177,722 LINN CNTY 3.4340 ESD LBL 0.2704 LBCC 0.5974 LEBANON SD 6.2212 LEBANON CTY 6.3149 LEBANON RFD 2.2232 N LEB WTR 0.1420 LEB AQUA CNTR 0.2129 LINN SWTR 0.0000 4H EXT 0.0463 LEB UR II 2.3270 LEB UR III 0.3065 LEB UR IV 0.1732 Total 22.2690	<b>Code 921</b> Value \$2,497,840 LINN CNTY 3.4340 ESD LBL 0.2704 LBCC 0.5974 LEBANON SD 6.2212 LEBANON CTY 6.3149 LEBANON RFD 2.2232 LEB AQUA CNTR 0.2129 4H EXT 0.0463 LEB UR II 2.3270 LEB UR III 0.3065 LEB UR IV 0.1732 Total 22.1270
<b>Code 827</b> Value \$207,385,941 LINN CNTY 3.4788 ESD LBL 0.2956 LBCC 0.6530 ALBANY SD 6.0247 ALBANY CTY 7.8092 LINN SWTR 0.0000 4H EXT 0.0501 ALBANY UR 0.6059 Total 18.9173	<b>Code 835</b> Value \$5,223,422 LINN CNTY 3.6136 ESD LBL 0.3049 LBCC 0.6736 ALBANY SD 6.2160 CORVLS RFD 2.1140 OAKVL CNTR 0.0000 LINN SWTR 0.0000 4H EXT 0.0520 Total 12.9741	<b>Code 848</b> Value \$85,690 LINN CNTY 3.4788 ESD LBL 0.2956 LBCC 0.6530 ALBANY SD 6.0247 ALBANY CTY 7.8092 LINN SWTR 0.0000 4H EXT 0.0501 ALBANY UR 0.6059 Total 18.9173	<b>Code 907</b> Value \$3,481,860 LINN CNTY 3.6136 ESD LBL 0.3049 LBCC 0.6736 LEBANON SD 7.0185 LEBANON RFD 2.4832 N LEB WTR 0.1420 LEB AQUA CNTR 0.2400 LINN SWTR 0.0000 4H EXT 0.0520 Total 14.5278	<b>Code 917</b> Value \$23,683,976 LINN CNTY 3.4340 ESD LBL 0.2704 LBCC 0.5974 LEBANON SD 6.2212 LEBANON CTY 6.3149 LEBANON RFD 2.2232 LEB AQUA CNTR 0.2129 LINN SWTR 0.0000 4H EXT 0.0463 LEB UR II 2.3270 LEB UR III 0.3065 LEB UR IV 0.1732 Total 22.1270	<b>Code 922</b> Value \$92,275 LINN CNTY 3.4340 ESD LBL 0.2704 LBCC 0.5974 LEBANON SD 6.2212 LEBANON CTY 6.3149 LEBANON RFD 2.2232 N LEB WTR 0.1420 LEB AQUA CNTR 0.2129 4H EXT 0.0463 LEB UR II 2.3270 LEB UR III 0.3065 LEB UR IV 0.1732 Total 22.2690
<b>Code 828</b> Value \$1,801,281 LINN CNTY 3.6136 ESD LBL 0.3049 LBCC 0.6736 ALBANY SD 6.2160 TANGENT RFD 2.5739 LINN SWTR 0.0000 4H EXT 0.0520 Total 13.4340	<b>Code 836</b> Value \$153,190 LINN CNTY 3.6136 ESD LBL 0.3049 LBCC 0.6736 ALBANY SD 6.2160 OAKVL CNTR 0.0000 LINN SWTR 0.0000 4H EXT 0.0520 Total 10.8601	<b>Code 901</b> Value \$46,610 LINN CNTY 3.6136 ESD LBL 0.3049 LBCC 0.6736 LEBANON SD 7.0185 SODAVLE CTY 0.4552 LEB AQUA CNTR 0.2400 LINN SWTR 0.0000 4H EXT 0.0520 Total 12.3578	<b>Code 908</b> Value \$18,262,508 LINN CNTY 3.6136 ESD LBL 0.3049 LBCC 0.6736 LEBANON SD 7.0185 SCIO RFD 1.2745 LEB AQUA CNTR 0.2400 LINN SWTR 0.0000 4H EXT 0.0520 Total 13.1771	<b>Code 918</b> Value \$22,791,335 LINN CNTY 3.6136 ESD LBL 0.3049 LBCC 0.6736 LEBANON SD 7.0185 LEBANON RFD 2.4832 LEB AQUA CNTR 0.2400 4H EXT 0.0520 Total 14.3858	<b>Code 923</b> Value \$129,700 LINN CNTY 3.4340 ESD LBL 0.2704 LBCC 0.5974 LEBANON SD 6.2212 LEBANON CTY 6.3149 LEB AQUA CNTR 0.2129 LINN SWTR 0.0000 4H EXT 0.0463 LEB UR II 2.1272 LEB UR III 0.2694 LEB UR IV 0.1501 Total 19.6438
<b>Code 829</b> Value \$6,287,803 LINN CNTY 3.6136 ESD LBL 0.3049 LBCC 0.6736 ALBANY SD 6.2160 TANGENT RFD 2.5739 LINN SWTR 0.0000 4H EXT 0.0520 Total 13.4340	<b>Code 840</b> Value \$46,020 LINN CNTY 3.6136 ESD LBL 0.3049 LBCC 0.6736 ALBANY SD 6.2160 MILRSBG CTY 1.7000 ALBANY RFD 2.1500 LINN SWTR 0.0000 4H EXT 0.0520 Total 14.7101	<b>Code 902</b> Value \$456,214,132 LINN CNTY 3.6136 ESD LBL 0.3049 LBCC 0.6736 LEBANON SD 7.0185 LEBANON RFD 2.4832 LEB AQUA CNTR 0.2400 LINN SWTR 0.0000 4H EXT 0.0520 Total 14.3858	<b>Code 909</b> Value \$968,797 LINN CNTY 3.6136 ESD LBL 0.3049 LBCC 0.6736 LEBANON SD 7.0185 LEB AQUA CNTR 0.2400 LINN SWTR 0.0000 4H EXT 0.0520 Total 11.9026	<b>Code 919</b> Value \$811,193 LINN CNTY 3.6136 ESD LBL 0.3049 LBCC 0.6736 LEBANON SD 7.0185 LEB AQUA CNTR 0.2400 4H EXT 0.0520 Total 11.9026	<b>Code 924</b> Value \$9,000 LINN CNTY 3.4340 ESD LBL 0.2704 LBCC 0.5974 LEBANON SD 6.2212 LEBANON CTY 6.3149 LEB AQUA CNTR 0.2129 4H EXT 0.0463 LEB UR II 2.1272 LEB UR III 0.2694 LEB UR IV 0.1501 Total 19.6438
<b>Code 830</b> Value \$184,853,948 LINN CNTY 3.4788 ESD LBL 0.2956 LBCC 0.6530 ALBANY SD 6.0247 ALBANY CTY 7.8092 LINN SWTR 0.0000 4H EXT 0.0501 ALBANY UR 0.6059 Total 18.9173	<b>Code 842</b> Value \$230,540 LINN CNTY 3.6136 ESD LBL 0.3049 LBCC 0.6736 ALBANY SD 6.2160 MILRSBG CTY 1.7000 JEFFRSN PARK 0.2914 LINN SWTR 0.0000 4H EXT 0.0520 Total 14.0470	<b>Code 903</b> Value \$25,106,954 LINN CNTY 3.6136 ESD LBL 0.3049 LBCC 0.6736 LEBANON SD 7.0185 LEB AQUA CNTR 0.2400 LINN SWTR 0.0000 4H EXT 0.0520 Total 11.9026	<b>Code 914</b> Value \$14,397,382 LINN CNTY 3.6136 ESD LBL 0.3049 LBCC 0.6736 LEBANON SD 7.0185 LEBANON RFD 2.4832 LEB AQUA CNTR 0.2400 LINN SWTR 0.0000 4H EXT 0.0520 Total 14.3858	<b>Code 920</b> Value \$328,947 LINN CNTY 3.6136 ESD LBL 0.3049 LBCC 0.6736 LEBANON SD 7.0185 LEBANON RFD 2.4832 N LEB WTR 0.1420 LEB AQUA CNTR 0.2400 4H EXT 0.0520 Total 14.5278	
<b>Code 833</b> Value \$844,630 LINN CNTY 3.6136 ESD LBL 0.3049 LBCC 0.6736 ALBANY SD 6.2160 TANGENT RFD 2.5739 OAKVL CNTR 0.0000 LINN SWTR 0.0000 4H EXT 0.0520 Total 13.4340	<b>Code 846</b> Value \$344,258,084 LINN CNTY 3.4788 ESD LBL 0.2956 LBCC 0.6530 ALBANY SD 6.0247 ALBANY CTY 7.8092 LINN SWTR 0.0000 4H EXT 0.0501 ALBANY UR 0.6059 Total 18.9173	<b>Code 904</b> <b>SODAVILLE</b> Value \$13,154,014 LINN CNTY 3.6136 ESD LBL 0.3049 LBCC 0.6736 LEBANON SD 7.0185 SODAVLE CTY 0.4552 LEBANON RFD 2.4832 LEB AQUA CNTR 0.2400 LINN SWTR 0.0000 4H EXT 0.0520 Total 14.8410			

Tax rates are shown in dollars per thousand of taxable value. Rates are before Measure 5 compression.

**LINN COUNTY TAX SUMMARY**

**2010-2011**

<b>Code 925</b> Value \$58,370,939 LINN CNTY 3.4340 ESD LBL 0.2704 LBCC 0.5974 LEBANON SD 6.2212 LEBANON CTY 6.3149 LEBANON RFD 2.2232 LEB AQUA CNTR 0.2129 LINN SWTR 0.0000 4H EXT 0.0463 LEB UR II 2.3270 LEB UR III 0.3065 LEB UR IV 0.1732 Total 22.1270	<b>Code 932</b> Value \$3,406,248 LINN CNTY 3.6136 ESD LBL 0.3049 LBCC 0.6736 LEBANON SD 7.0185 BRNSVL RFD 2.2213 LEB AQUA CNTR 0.2400 LINN SWTR 0.0000 4H EXT 0.0520 Total 14.1239	<b>Code 939</b> Value \$2,630,788 LINN CNTY 3.6136 ESD LBL 0.3049 LBCC 0.6736 LEBANON SD 7.0185 SCIO RFD 1.2745 N LEB WTR 0.1420 LEB AQUA CNTR 0.2400 LINN SWTR 0.0000 4H EXT 0.0520 Total 13.3191	<b>Code 945</b> Value \$5,129,040 LINN CNTY 3.6136 ESD LBL 0.3049 LBCC 0.6736 LEBANON SD 7.0185 LEB AQUA CNTR 0.2400 4H EXT 0.0520 Total 11.9026	<b>Code 950</b> Value \$5,563,815 LINN CNTY 3.6136 ESD LBL 0.3049 LBCC 0.6736 LEBANON SD 7.0185 LEB AQUA CNTR 0.2400 LINN SWTR 0.0000 4H EXT 0.0520 Total 11.9026	<b>Code 956</b> Value \$2,000 LINN CNTY 3.4340 ESD LBL 0.2704 LBCC 0.5974 LEBANON SD 6.2212 LEBANON CTY 6.3149 LEB AQUA CNTR 0.2129 LINN SWTR 0.0000 4H EXT 0.0463 LEB UR II 2.1272 LEB UR III 0.2694 LEB UR IV 0.1501 Total 19.6438
<b>Code 926</b> Value \$1,000 LINN CNTY 3.4340 ESD LBL 0.2704 LBCC 0.5974 LEBANON SD 6.2212 LEBANON CTY 6.3149 LEB AQUA CNTR 0.2129 LINN SWTR 0.0000 4H EXT 0.0463 LEB UR II 2.1272 LEB UR III 0.2694 LEB UR IV 0.1501 Total 19.6438	<b>Code 933</b> Value \$24,784,562 LINN CNTY 3.6136 ESD LBL 0.3049 LBCC 0.6736 LEBANON SD 7.0185 LEBANON RFD 2.4832 LEB AQUA CNTR 0.2400 LINN SWTR 0.0000 4H EXT 0.0520 Total 14.3858	<b>Code 940</b> Value \$87,844,111 LINN CNTY 3.6136 ESD LBL 0.3049 LBCC 0.6736 LEBANON SD 7.0185 LEBANON RFD 2.4832 LEB AQUA CNTR 0.2400 4H EXT 0.0520 Total 14.3858	<b>Code 946</b> Value \$20,066,024 LINN CNTY 3.6136 ESD LBL 0.3049 LBCC 0.6736 LEBANON SD 7.0185 LEBANON RFD 2.4832 LEB AQUA CNTR 0.2400 4H EXT 0.0520 Total 14.3858	<b>Code 952</b> Value \$194,500 LINN CNTY 3.4340 ESD LBL 0.2704 LBCC 0.5974 LEBANON SD 6.2212 LEBANON CTY 6.3149 LEBANON RFD 2.2232 N LEB WTR 0.1420 LEB AQUA CNTR 0.2129 4H EXT 0.0463 LEB UR II 2.3270 LEB UR III 0.3065 LEB UR IV 0.1732 Total 22.2690	<b>Code 957</b> <b>WATERLOO</b> Value \$7,970,133 LINN CNTY 3.6136 ESD LBL 0.3049 LBCC 0.6736 LEBANON SD 7.0185 WTRLOO CTY 0.0000 LEBANON RFD 2.4832 LEB AQUA CNTR 0.2400 LINN SWTR 0.0000 4H EXT 0.0520 Total 14.3858
<b>Code 927</b> Value \$914,067 LINN CNTY 3.5010 ESD LBL 0.2780 LBCC 0.6142 LEBANON SD 6.3980 LEBANON RFD 2.2834 LEB AQUA CNTR 0.2188 4H EXT 0.0475 LEB UR II 1.8801 Total 15.2210	<b>Code 934</b> Value \$4,702,627 LINN CNTY 3.6136 ESD LBL 0.3049 LBCC 0.6736 LEBANON SD 7.0185 LEBANON RFD 2.4832 LEB AQUA CNTR 0.2400 LINN SWTR 0.0000 4H EXT 0.0520 Total 14.3858	<b>Code 941</b> Value \$3,431,434 LINN CNTY 3.6136 ESD LBL 0.3049 LBCC 0.6736 LEBANON SD 7.0185 LEBANON RFD 2.4832 N LEB WTR 0.1420 LEB AQUA CNTR 0.2400 4H EXT 0.0520 Total 14.5278	<b>Code 947</b> Value \$106,255,430 LINN CNTY 3.4340 ESD LBL 0.2704 LBCC 0.5974 LEBANON SD 6.2212 LEBANON CTY 6.3149 LEBANON RFD 2.2232 LEB AQUA CNTR 0.2129 LINN SWTR 0.0000 4H EXT 0.0463 LEB UR II 2.3270 LEB UR III 0.3065 LEB UR IV 0.1732 Total 22.1270	<b>Code 953</b> Value \$1,250,457 LINN CNTY 3.5010 ESD LBL 0.2780 LBCC 0.6142 LEBANON SD 6.3980 LEBANON RFD 2.2834 LEB AQUA CNTR 0.2188 LINN SWTR 0.0000 4H EXT 0.0475 LEB UR II 1.8801 Total 15.2210	<b>Code 958</b> Value \$455,720 LINN CNTY 3.4340 ESD LBL 0.2704 LBCC 0.5974 LEBANON SD 6.2212 LEBANON CTY 6.3149 LEBANON RFD 2.2232 LEB AQUA CNTR 0.2129 LINN SWTR 0.0000 4H EXT 0.0463 LEB UR II 2.3270 LEB UR III 0.3065 LEB UR IV 0.1732 Total 22.1270
<b>Code 928</b> Value \$7,000 LINN CNTY 3.5010 ESD LBL 0.2780 LBCC 0.6142 LEBANON SD 6.3980 LEB AQUA CNTR 0.2188 LINN SWTR 0.0000 4H EXT 0.0475 LEB UR II 1.6803 Total 12.7378	<b>Code 935</b> Value \$225,110 LINN CNTY 3.6136 ESD LBL 0.3049 LBCC 0.6736 LEBANON SD 7.0185 LEBANON RFD 2.4832 N LEB WTR 0.1420 LEB AQUA CNTR 0.2400 LINN SWTR 0.0000 4H EXT 0.0520 Total 14.5278	<b>Code 942</b> Value \$8,714,236 LINN CNTY 3.6136 ESD LBL 0.3049 LBCC 0.6736 LEBANON SD 7.0185 LEB AQUA CNTR 0.2400 4H EXT 0.0520 Total 11.9026	<b>Code 948</b> Value \$42,991,733 LINN CNTY 3.6136 ESD LBL 0.3049 LBCC 0.6736 LEBANON SD 7.0185 LEBANON RFD 2.4832 N LEB WTR 0.1420 LEB AQUA CNTR 0.2400 LINN SWTR 0.0000 4H EXT 0.0520 Total 14.5278	<b>Code 954</b> Value \$10,495,262 LINN CNTY 3.4340 ESD LBL 0.2704 LBCC 0.5974 LEBANON SD 6.2212 LEBANON CTY 6.3149 LEB AQUA CNTR 0.2129 LINN SWTR 0.0000 4H EXT 0.0463 LEB UR II 2.3270 LEB UR III 0.3065 LEB UR IV 0.1732 Total 22.1270	<b>Code 960</b> Value \$463,060 LINN CNTY 3.6136 ESD LBL 0.3049 LBCC 0.6736 LEBANON SD 7.0185 LEB AQUA CNTR 0.2400 LINN SWTR 0.0000 4H EXT 0.0520 LEB UR II 2.3270 LEB UR III 0.3065 LEB UR IV 0.1732 Total 11.9026
<b>Code 931</b> Value \$10,945,435 LINN CNTY 3.4340 ESD LBL 0.2704 LBCC 0.5974 LEBANON SD 6.2212 LEBANON CTY 6.3149 LEBANON RFD 2.2232 LEB AQUA CNTR 0.2129 LINN SWTR 0.0000 4H EXT 0.0463 LEB UR II 2.3270 LEB UR III 0.3065 LEB UR IV 0.1732 Total 22.1270	<b>Code 936</b> Value \$320,930 LINN CNTY 3.6136 ESD LBL 0.3049 LBCC 0.6736 LEBANON SD 7.0185 LEB AQUA CNTR 0.2400 LINN SWTR 0.0000 4H EXT 0.0520 Total 11.9026	<b>Code 943</b> Value \$46,126 LINN CNTY 3.4340 ESD LBL 0.2704 LBCC 0.5974 LEBANON SD 6.2212 LEBANON CTY 6.3149 LEBANON RFD 2.2232 N LEB WTR 0.1420 LEB AQUA CNTR 0.2129 4H EXT 0.0463 LEB UR II 2.3270 LEB UR III 0.3065 LEB UR IV 0.1732 Total 22.2690	<b>Code 949</b> Value \$319,845 LINN CNTY 3.4340 ESD LBL 0.2704 LBCC 0.5974 LEBANON SD 6.2212 LEBANON CTY 6.3149 LEBANON RFD 2.2232 N LEB WTR 0.1420 LEB AQUA CNTR 0.2129 LINN SWTR 0.0000 4H EXT 0.0463 LEB UR II 2.3270 LEB UR III 0.3065 LEB UR IV 0.1732 Total 22.2690	<b>Code 955</b> Value \$22,000 LINN CNTY 3.5010 ESD LBL 0.2780 LBCC 0.6142 LEBANON SD 6.3980 LEB AQUA CNTR 0.2188 LINN SWTR 0.0000 4H EXT 0.0475 LEB UR II 1.6803 Total 12.7378	<b>Code 962</b> Value \$1,769,213 LINN CNTY 3.6136 ESD LBL 0.3049 LBCC 0.6736 LEBANON SD 7.0185 TANGENT RFD 2.5739 LEB AQUA CNTR 0.2400 LINN SWTR 0.0000 4H EXT 0.0520 Total 14.4765
<b>Code 932</b> Value \$12,533,494 LINN CNTY 3.6136 ESD LBL 0.3049 LBCC 0.6736 LEBANON SD 7.0185 SCIO RFD 1.2745 LEB AQUA CNTR 0.2400 LINN SWTR 0.0000 4H EXT 0.0520 Total 13.1771	<b>Code 944</b> Value \$15,272,399 LINN CNTY 3.6136 ESD LBL 0.3049 LBCC 0.6736 LEBANON SD 7.0185 SCIO RFD 1.2745 LEB AQUA CNTR 0.2400 LINN SWTR 0.0000 4H EXT 0.0520 Total 13.1771				

Tax rates are shown in dollars per thousand of taxable value.  
Rates are before Measure 5 compression.

**LINN COUNTY TAX SUMMARY**

**2010-2011**

<b>Code 963</b> Value \$8,390 LINN CNTY 3.6136 ESD LBL 0.3049 LBCC 0.6736 LEBANON SD 7.0185 N LEB WTR 0.1420 LEB AQUA CNTR 0.2400 LINN SWTR 0.0000 4H EXT 0.0520 Total 12.0446	<b>Code 969</b> Value \$7,351,160 LINN CNTY 3.4340 ESD LBL 0.2704 LBCC 0.5974 LEBANON SD 6.2212 LEBANON CTY 6.3149 LEBANON RFD 2.2232 LEB AQUA CNTR 0.2129 LINN SWTR 0.0000 4H EXT 0.0463 LEB UR II 2.3270 LEB UR III 0.3065 LEB UR IV 0.1732 Total 22.1270	<b>Code 973</b> Value \$11,072,293 LINN CNTY 3.4340 ESD LBL 0.2704 LBCC 0.5974 LEBANON SD 6.2212 LEBANON CTY 6.3149 LEBANON RFD 2.2232 LEB AQUA CNTR 0.2129 LINN SWTR 0.0000 4H EXT 0.0463 LEB UR II 2.3270 LEB UR III 0.3065 LEB UR IV 0.1732 Total 22.1270	<b>Code 979</b> Value \$7,690,707 LINN CNTY 3.4340 ESD LBL 0.2704 LBCC 0.5974 LEBANON SD 6.2212 LEBANON CTY 6.3149 LEBANON RFD 2.2232 LEB AQUA CNTR 0.2129 LINN SWTR 0.0000 4H EXT 0.0463 LEB UR II 2.3270 LEB UR III 0.3065 LEB UR IV 0.1732 Total 22.1270	<b>Code 2705</b> Value \$26,632,288 LINN CNTY 3.6136 ESD WILL 0.2967 CHEM CC 0.7932 CHEM LIB 0.0818 N SANT SD 5.0444 LYONS RFD 2.3751 LY/MEH WTR 0.3990 LINN SWTR 0.0000 4H EXT 0.0520 Total 12.6558	<b>Code 2711</b> Value \$3,949,641 LINN CNTY 3.6136 ESD WILL 0.2967 LBCC 0.6736 N SANT SD 5.0444 SCIO RFD 1.2745 LINN SWTR 0.0000 4H EXT 0.0520 Total 10.9548
<b>Code 964</b> Value \$947,718 LINN CNTY 3.6136 ESD LBL 0.3049 LBCC 0.6736 LEBANON SD 7.0185 LEBANON RFD 2.4832 LEB AQUA CNTR 0.2400 LINN SWTR 0.0000 4H EXT 0.0520 Total 14.3858	<b>Code 970</b> Value \$613,708 LINN CNTY 3.5596 ESD LBL 0.3004 LBCC 0.6636 LEBANON SD 6.9135 LEBANON RFD 2.4461 LEB AQUA CNTR 0.2365 LINN SWTR 0.0000 4H EXT 0.0513 LEB UR III 0.2148 Total 14.3858	<b>Code 974</b> Value \$1,050,683 LINN CNTY 3.6136 ESD LBL 0.3049 LBCC 0.6736 LEBANON SD 7.0185 SW HM FIRE/AM 1.8698 LEB AQUA CNTR 0.2400 LINN SWTR 0.0000 4H EXT 0.0520 Total 13.7724	<b>Code 2701</b> LYONS Value \$68,485,235 LINN CNTY 3.6136 ESD WILL 0.2967 CHEM CC 0.7932 CHEM LIB 0.0818 N SANT SD 5.0444 LYONS CTY 2.7647 LYONS RFD 2.3751 LY/MEH WTR 0.3990 LINN SWTR 0.0000 4H EXT 0.0520 Total 15.4205	<b>Code 2706</b> Value \$581,152 LINN CNTY 3.6136 ESD WILL 0.2967 CHEM CC 0.7932 CHEM LIB 0.0818 N SANT SD 5.0444 LY/MEH WTR 0.3990 LINN SWTR 0.0000 4H EXT 0.0520 Total 10.2807	<b>Code 2713</b> Value \$711,367 LINN CNTY 3.6136 ESD WILL 0.2967 LBCC 0.6736 N SANT SD 5.0444 LYONS RFD 2.3751 LINN SWTR 0.0000 4H EXT 0.0520 Total 12.0554
<b>Code 965</b> Value \$3,144,775 LINN CNTY 3.6136 ESD LBL 0.3049 LBCC 0.6736 LEBANON SD 7.0185 ALBANY RFD 2.1500 LEB AQUA CNTR 0.2400 LINN SWTR 0.0000 4H EXT 0.0520 Total 14.0526	<b>Code 971</b> Value \$564,955 LINN CNTY 3.5596 ESD LBL 0.3004 LBCC 0.6636 LEBANON SD 6.9135 LEBANON RFD 2.4461 LEB AQUA CNTR 0.2365 LINN SWTR 0.0000 4H EXT 0.0513 LEB UR III 0.2148 Total 14.3858	<b>Code 975</b> Value \$1,111,264 LINN CNTY 3.6136 ESD LBL 0.3049 LBCC 0.6736 LEBANON SD 7.0185 SW HM FIRE/AM 1.8698 LEB AQUA CNTR 0.2400 LINN SWTR 0.0000 4H EXT 0.0520 Total 13.7724	<b>Code 2702</b> Value \$6,226,520 LINN CNTY 3.6136 ESD WILL 0.2967 CHEM CC 0.7932 CHEM LIB 0.0818 N SANT SD 5.0444 LINN SWTR 0.0000 4H EXT 0.0520 Total 9.8817	<b>Code 2707</b> Value \$128,980 LINN CNTY 3.6136 ESD WILL 0.2967 CHEM CC 0.7932 CHEM LIB 0.0818 N SANT SD 5.0444 LYONS CTY 2.7647 LYONS RFD 2.3751 LINN SWTR 0.0000 4H EXT 0.0520 Total 15.0215	<b>Code 2714</b> Value \$1,123,940 LINN CNTY 3.6136 ESD WILL 0.2967 LBCC 0.6736 N SANT SD 5.0444 STAYTON RFD 1.5827 SANT WTR 0.0000 LINN SWTR 0.0000 4H EXT 0.0520 Total 11.2630
<b>Code 966</b> Value \$677,680 LINN CNTY 3.6136 ESD LBL 0.3049 LBCC 0.6736 LEBANON SD 7.0185 TANGENT RFD 2.5739 LEB AQUA CNTR 0.2400 LINN SWTR 0.0000 4H EXT 0.0520 Total 14.4765	<b>Code 972</b> Value \$2,177,740 LINN CNTY 3.4340 ESD LBL 0.2704 LBCC 0.5974 LEBANON SD 6.2212 LEBANON CTY 6.3149 LEBANON RFD 2.2232 LEB AQUA CNTR 0.2129 LINN SWTR 0.0000 4H EXT 0.0463 LEB UR II 2.3270 LEB UR III 0.3065 LEB UR IV 0.1732 Total 22.1270	<b>Code 977</b> Value \$7,847,720 LINN CNTY 3.4340 ESD LBL 0.2704 LBCC 0.5974 LEBANON SD 6.2212 LEBANON CTY 6.3149 LEBANON RFD 2.2232 LEB AQUA CNTR 0.2129 LINN SWTR 0.0000 4H EXT 0.0463 LEB UR II 2.3270 LEB UR III 0.3065 LEB UR IV 0.1732 Total 22.1270	<b>Code 2703</b> Value \$39,194,451 LINN CNTY 3.6136 ESD WILL 0.2967 CHEM CC 0.7932 CHEM LIB 0.0818 N SANT SD 5.0444 LYONS RFD 2.3751 LINN SWTR 0.0000 4H EXT 0.0520 Total 12.2568	<b>Code 2708</b> Value \$38,310 LINN CNTY 3.6136 ESD WILL 0.2967 CHEM CC 0.7932 CHEM LIB 0.0818 N SANT SD 5.0444 LYONS CTY 2.7647 LINN SWTR 0.0000 4H EXT 0.0520 Total 12.6464	<b>Code 2715</b> Value \$34,030 LINN CNTY 3.6136 ESD WILL 0.2967 LBCC 0.6736 N SANT SD 5.0444 SANT WTR 0.0000 LINN SWTR 0.0000 4H EXT 0.0520 Total 9.6803
<b>Code 967</b> Value \$463,790 LINN CNTY 3.6136 ESD LBL 0.3049 LBCC 0.6736 LEBANON SD 7.0185 TANGENT RFD 2.5739 LEB AQUA CNTR 0.2400 LINN SWTR 0.0000 4H EXT 0.0520 Total 14.4765	<b>Code 978</b> Value \$1,410,010 LINN CNTY 3.4340 ESD LBL 0.2704 LBCC 0.5974 LEBANON SD 6.2212 LEBANON CTY 6.3149 LEBANON RFD 2.2232 LEB AQUA CNTR 0.2129 LINN SWTR 0.0000 4H EXT 0.0463 LEB UR II 2.3270 LEB UR III 0.3065 LEB UR IV 0.1732 Total 22.1270	<b>Code 978</b> Value \$1,410,010 LINN CNTY 3.4340 ESD LBL 0.2704 LBCC 0.5974 LEBANON SD 6.2212 LEBANON CTY 6.3149 LEBANON RFD 2.2232 LEB AQUA CNTR 0.2129 LINN SWTR 0.0000 4H EXT 0.0463 LEB UR II 2.3270 LEB UR III 0.3065 LEB UR IV 0.1732 Total 22.1270	<b>Code 2704</b> Value \$419,650 LINN CNTY 3.6136 ESD WILL 0.2967 CHEM CC 0.7932 CHEM LIB 0.0818 N SANT SD 5.0444 STAYTON RFD 1.5827 LINN SWTR 0.0000 4H EXT 0.0520 Total 11.4644	<b>Code 2709</b> Value \$140,000 LINN CNTY 3.6136 ESD WILL 0.2967 CHEM CC 0.7932 CHEM LIB 0.0818 N SANT SD 5.0444 LYONS CTY 2.7647 LY/MEH WTR 0.3990 LINN SWTR 0.0000 4H EXT 0.0520 Total 13.0454	<b>Code 4001</b> Value \$9,716,833 LINN CNTY 3.6136 ESD LANE 0.2232 LANE CC 0.8589 EUGENE SD 7.5509 HARSBG RFD 1.1299 LINN SWTR 0.0000 4H EXT 0.0520 Total 13.4285
<b>Code 968</b> Value \$9,576,446 LINN CNTY 3.5596 ESD LBL 0.3004 LBCC 0.6636 LEBANON SD 6.9135 LEBANON RFD 2.4461 LEB AQUA CNTR 0.2365 LINN SWTR 0.0000 4H EXT 0.0513 LEB UR III 0.2148 Total 14.3858	Tax rates are shown in dollars per thousand of taxable value. Rates are before Measure 5 compression.		<b>Code 2710</b> Value \$80,994,399 LINN CNTY 3.6136 ESD WILL 0.2967 LBCC 0.6736 N SANT SD 5.0444 STAYTON RFD 1.5827 LINN SWTR 0.0000 4H EXT 0.0520 Total 11.2630		



**LINN COUNTY TAX SUMMARY**

**2010-2011**

<b>Code 5501</b> <b>SWEET HOME</b> Value \$367,698,186 LINN CNTY 3.6136 ESD LBL 0.3049 LBCC 0.6736 SW HM SD 6.6324 SW HM CEM 0.2166 SW HM CTY 8.7010 SW HM FIRE/AM 1.8698 SW HM CEM 0.2166 LINN SWTR 0.0000 4H EXT 0.0520 Total 22.0639	<b>Code 5512</b> Value \$7,091,069 LINN CNTY 3.6136 ESD LBL 0.3049 LBCC 0.6736 SW HM SD 6.6324 SW HM CEM 0.2166 4H EXT 0.0520 Total 11.4931 <b>Code 5513</b> Value \$62,360,282 LINN CNTY 3.6136 ESD LBL 0.3049 LBCC 0.6736 SW HM SD 6.6324 SW HM FIRE/AM 1.8698 SW HM CEM 0.2166 4H EXT 0.0520 Total 13.3629 <b>Code 5515</b> Value \$14,127,888 LINN CNTY 3.6136 ESD LBL 0.3049 LBCC 0.6736 SW HM SD 6.6324 SW HM FIRE/AM 1.8698 4H EXT 0.0520 Total 13.1463 <b>Code 5517</b> Value \$126,510 LINN CNTY 3.6136 ESD LBL 0.3049 LBCC 0.6736 SW HM SD 6.6324 LEBANON RFD 2.4832 LINN SWTR 0.0000 4H EXT 0.0520 Total 13.7597 <b>Code 5518</b> Value \$235,879 LINN CNTY 3.6136 ESD LBL 0.3049 LBCC 0.6736 SW HM SD 6.6324 LEBANON RFD 2.4832 4H EXT 0.0520 Total 13.7597 <b>Code 5521</b> Value \$152,000 LINN CNTY 3.6136 ESD LBL 0.3049 LBCC 0.6736 SW HM SD 6.6324 SW HM CTY 8.4357 SW HM CEM 0.2166 LINN SWTR 0.0000 4H EXT 0.0520 Total 20.1941	<b>Code 5523</b> Value \$533,310 LINN CNTY 3.6136 ESD LBL 0.3049 LBCC 0.6736 SW HM SD 6.6324 SW HM AM 0.3500 SW HM CEM 0.2166 LINN SWTR 0.0000 4H EXT 0.0520 Total 11.8431 <b>Code 5524</b> Value \$65,694,940 LINN CNTY 3.6136 ESD LBL 0.3049 LBCC 0.6736 SW HM SD 6.6324 SW HM AM 0.3500 LINN SWTR 0.0000 4H EXT 0.0520 Total 11.6265 <b>Code 5525</b> Value \$3,350,586 LINN CNTY 3.6136 ESD LBL 0.3049 LBCC 0.6736 SW HM SD 6.6324 BRNSVL RFD 2.2213 SW HM AM 0.3500 LINN SWTR 0.0000 4H EXT 0.0520 Total 13.8478 <b>Code 5526</b> Value \$3,841,332 LINN CNTY 3.6136 ESD LBL 0.3049 LBCC 0.6736 SW HM SD 6.6324 SW HM AM 0.3500 4H EXT 0.0520 Total 11.6265 <b>Code 5527</b> Value \$563,240 LINN CNTY 3.6136 ESD LBL 0.3049 LBCC 0.6736 SW HM SD 6.6324 SW HM AM 0.3500 SW HM CEM 0.2166 4H EXT 0.0520 Total 11.8431 <b>Code 5528</b> Value \$77,540 LINN CNTY 3.6136 ESD LBL 0.3049 LBCC 0.6736 SW HM SD 6.6324 SW HM AM 0.3500 MOHAWK RFD 1.9126 LINN SWTR 0.0000 4H EXT 0.0520 Total 13.5391	<b>Code 7901</b> Value \$62,460 LINN CNTY 3.6136 ESD LANE 0.2232 LANE CC 0.8589 MARCOLA SD 4.6687 4H EXT 0.0520 Total 9.4164 <b>Code 9502</b> Value \$156,065,638 LINN CNTY 3.6136 ESD LBL 0.3049 LBCC 0.6736 SCIO SD 5.4266 SCIO RFD 1.2745 LINN SWTR 0.0000 4H EXT 0.0520 Total 11.3452 <b>Code 9503</b> Value \$8,845,978 LINN CNTY 3.6136 ESD LBL 0.3049 LBCC 0.6736 SCIO SD 5.4266 LINN SWTR 0.0000 4H EXT 0.0520 Total 10.0707 <b>Code 9504</b> Value \$1,322,608 LINN CNTY 3.6136 ESD LBL 0.3049 LBCC 0.6736 SCIO SD 5.4266 SCIO RFD 1.2745 S SANT WTR 1.0044 LINN SWTR 0.0000 4H EXT 0.0520 Total 12.3496 <b>Code 9507</b> Value \$927,636 LINN CNTY 3.6136 ESD LBL 0.3049 LBCC 0.6736 SCIO SD 5.4266 STAYTON RFD 1.5827 LINN SWTR 0.0000 4H EXT 0.0520 Total 11.6534 <b>Code 9508</b> Value \$27,443,086 LINN CNTY 3.6136 ESD LBL 0.3049 LBCC 0.6736 SCIO SD 5.4266 SCIO RFD 1.2745 SANT WTR 0.0000 LINN SWTR 0.0000 4H EXT 0.0520 Total 11.3452	<b>Code 9509</b> Value \$939,055 LINN CNTY 3.6136 ESD LBL 0.3049 LBCC 0.6736 SCIO SD 5.4266 STAYTON RFD 1.5827 SANT WTR 0.0000 LINN SWTR 0.0000 4H EXT 0.0520 Total 11.6534 <b>Code 9510</b> <b>SCIO</b> Value \$38,269,022 LINN CNTY 3.6136 ESD LBL 0.3049 LBCC 0.6736 SCIO SD 5.4266 SCIO CTY 4.9057 SCIO RFD 1.2745 LINN SWTR 0.0000 4H EXT 0.0520 Total 16.2509 <b>Code 9511</b> Value \$1,000 LINN CNTY 3.6136 ESD LBL 0.3049 LBCC 0.6736 SCIO SD 5.4266 SCIO CTY 4.9057 SCIO RFD 1.2745 SANT WTR 0.0000 LINN SWTR 0.0000 4H EXT 0.0520 Total 16.2509 <b>Code 9512</b> Value \$1,990,218 LINN CNTY 3.6136 ESD LBL 0.3049 LBCC 0.6736 SCIO SD 4.5080 LINN SWTR 0.0000 4H EXT 0.0520 Total 9.1521 <b>Code 9513</b> Value \$4,161,145 LINN CNTY 3.6136 ESD LBL 0.3049 LBCC 0.6736 SCIO SD 4.5080 SCIO RFD 1.2745 LINN SWTR 0.0000 4H EXT 0.0520 Total 10.4266 <b>Code 9514</b> Value \$7,566,565 LINN CNTY 3.6136 ESD LBL 0.3049 LBCC 0.6736 SCIO SD 4.5080 LYONS RFD 2.3751 LINN SWTR 0.0000 4H EXT 0.0520 Total 11.5272	<b>Code 9515</b> Value \$227,280 LINN CNTY 3.6136 ESD LBL 0.3049 LBCC 0.6736 SCIO SD 5.4266 LYONS RFD 2.3751 LINN SWTR 0.0000 4H EXT 0.0520 Total 12.4458 <b>Code 12701</b> <b>MILL CITY</b> Value \$60,473,459 LINN CNTY 3.6136 ESD LBL 0.3049 CHEM CC 0.7932 CHEM LIB 0.0818 SANT CAN SD 4.8880 MILL CITY CTY 4.1578 MILL CITY RFD 1.9348 LINN SWTR 0.0000 4H EXT 0.0520 Total 15.8261 <b>Code 12702</b> Value \$24,044,047 LINN CNTY 3.6136 ESD LBL 0.3049 CHEM CC 0.7932 CHEM LIB 0.0818 SANT CAN SD 4.8880 MILL CITY RFD 1.9348 LINN SWTR 0.0000 4H EXT 0.0520 Total 11.6683 <b>Code 12703</b> Value \$29,074,510 LINN CNTY 3.6136 ESD LBL 0.3049 CHEM CC 0.7932 CHEM LIB 0.0818 SANT CAN SD 4.8880 LINN SWTR 0.0000 4H EXT 0.0520 Total 9.7335 <b>Code 12704</b> Value \$17,006,514 LINN CNTY 3.6136 ESD LBL 0.3049 CHEM CC 0.7932 CHEM LIB 0.0818 SANT CAN SD 4.8880 LYONS RFD 2.3751 LINN SWTR 0.0000 4H EXT 0.0520 Total 12.1086 <b>Code 12705</b> Value \$17,347,631 LINN CNTY 3.6136 ESD LBL 0.3049 CHEM CC 0.7932 CHEM LIB 0.0818 SANT CAN SD 4.8880 GATES RFD 2.3000 LINN SWTR 0.0000 4H EXT 0.0520 Total 12.0335
--	--	--	---	--	---

Tax rates are shown in dollars per thousand of taxable value. Rates are before Measure 5 compression.



**LINN COUNTY TAX SUMMARY**

**2010-2011**

<b>Code 12707</b> <b>GATES</b> Value \$3,278,251 LINN CNTY 3.6136 ESD LBL 0.3049 CHEM CC 0.7932 CHEM LIB 0.0818 SANT CAN SD 4.8880 GATES CTY 0.5698 GATES RFD 2.3000 LINN SWTR 0.0000 4H EXT 0.0520 Total 12.6033	<b>Code 14013</b> Value \$38,960 LINN CNTY 3.6136 ESD WILL 0.2967 LBCC 0.6736 JEFFRSN SD 4.8468 SCIO RFD 1.2745 JEFFRSN PARK 0.2914 S SANT WTR 1.0044 LINN SWTR 0.0000 4H EXT 0.0520 Total 12.0530	<b>Code 14018</b> Value \$2,424,648 LINN CNTY 3.6136 ESD WILL 0.2967 LBCC 0.6736 JEFFRSN SD 4.8468 JEFFRSN RFD 1.1955 JEFFRSN PARK 0.2914 S SANT WTR 1.0044 LINN SWTR 0.0000 4H EXT 0.0520 Total 11.9740	<b>Code 50904</b> Value \$558,707 LINN CNTY 3.6136 ESD LBL 0.3049 LBCC 0.6736 CORVLS SD 7.6546 TANGENT RFD 2.5739 LINN SWTR 0.0000 4H EXT 0.0520 Total 14.8726	<b>Code 55205</b> Value \$5,521,353 LINN CNTY 3.6136 ESD LBL 0.3049 LBCC 0.6736 C LINN SD 5.0345 TANGENT RFD 2.5739 LINN SWTR 0.0000 4H EXT 0.0520 Total 12.2525	<b>Code 55212</b> <b>HALSEY</b> Value \$44,861,195 LINN CNTY 3.6136 ESD LBL 0.3049 LBCC 0.6736 C LINN SD 5.0345 HALSEY CTY 6.7303 HLY/SHD RFD 0.9894 LINN SWTR 0.0000 4H EXT 0.0520 Total 17.3983
<b>Code 12708</b> Value \$1,412,685 LINN CNTY 3.6136 ESD LBL 0.3049 CHEM CC 0.7932 CHEM LIB 0.0818 SANT CAN SD 4.8880 IDANHA RFD 1.6592 LINN SWTR 0.0000 4H EXT 0.0520 Total 11.3927	<b>Code 14014</b> Value \$129,590 LINN CNTY 3.6136 ESD WILL 0.2967 LBCC 0.6736 JEFFRSN SD 4.8468 JEFFRSN PARK 0.2914 LINN SWTR 0.0000 4H EXT 0.0520 Total 9.7741	<b>Code 14019</b> Value \$11,236,423 LINN CNTY 3.6136 ESD WILL 0.2967 LBCC 0.6736 JEFFRSN SD 4.8468 JEFFRSN RFD 1.1955 JEFFRSN PARK 0.2914 DEV/CON WTR 0.1614 LINN SWTR 0.0000 4H EXT 0.0520 Total 11.1310	<b>Code 50905</b> Value \$323,380 LINN CNTY 3.6136 ESD LBL 0.3049 LBCC 0.6736 CORVLS SD 7.6546 HLY/SHD RFD 0.9894 LINN SWTR 0.0000 4H EXT 0.0520 Total 13.2881	<b>Code 55206</b> Value \$3,001,510 LINN CNTY 3.6136 ESD LBL 0.3049 LBCC 0.6736 C LINN SD 5.0345 HARSBG RFD 1.1299 LINN SWTR 0.0000 4H EXT 0.0520 Total 10.8085	<b>Code 55214</b> Value \$6,626,223 LINN CNTY 3.6136 ESD LBL 0.3049 LBCC 0.6736 C LINN SD 5.0345 HLY/SHD RFD 0.9894 OAKVL CNTR 0.0000 LINN SWTR 0.0000 4H EXT 0.0520 Total 10.6680
<b>Code 12709</b> <b>IDANHA</b> Value \$2,635,988 LINN CNTY 3.6136 ESD LBL 0.3049 CHEM CC 0.7932 CHEM LIB 0.0818 SANT CAN SD 4.8880 IDANHA CTY 2.5029 IDANHA RFD 1.6592 LINN SWTR 0.0000 4H EXT 0.0520 Total 13.8956	<b>Code 14015</b> Value \$3,339,436 LINN CNTY 3.6136 ESD WILL 0.2967 LBCC 0.6736 JEFFRSN SD 4.8468 SCIO RFD 1.2745 JEFFRSN PARK 0.2914 SANT WTR 0.0000 LINN SWTR 0.0000 4H EXT 0.0520 Total 11.0486	<b>Code 14020</b> Value \$318,250 LINN CNTY 3.6136 ESD WILL 0.2967 LBCC 0.6736 JEFFRSN SD 4.8468 MILRSBG CTY 1.7000 JEFFRSN RFD 1.1955 JEFFRSN PARK 0.2914 LINN SWTR 0.0000 4H EXT 0.0520 Total 12.6696	<b>Code 50906</b> Value \$12,373,757 LINN CNTY 3.6136 ESD LBL 0.3049 LBCC 0.6736 BENTON LIB 0.3947 CORVLS SD 7.6546 LINN SWTR 0.0000 4H EXT 0.0520 Total 12.6934	<b>Code 55207</b> Value \$11,328,698 LINN CNTY 3.6136 ESD LBL 0.3049 LBCC 0.6736 C LINN SD 5.0345 LINN SWTR 0.0000 4H EXT 0.0520 Total 9.6786	<b>Code 55215</b> Value \$317,480 LINN CNTY 3.6136 ESD LBL 0.3049 LBCC 0.6736 C LINN SD 5.0345 OAKVL CNTR 0.0000 LINN SWTR 0.0000 4H EXT 0.0520 Total 9.6786
<b>Code 12710</b> Value \$403,690 LINN CNTY 3.6136 ESD LBL 0.3049 CHEM CC 0.7932 CHEM LIB 0.0818 SANT CAN SD 4.8880 IDANHA CTY 2.5029 LINN SWTR 0.0000 4H EXT 0.0520 Total 12.2364	<b>Code 14016</b> Value \$7,078,537 LINN CNTY 3.6136 ESD WILL 0.2967 LBCC 0.6736 JEFFRSN SD 4.8468 JEFFRSN RFD 1.1955 JEFFRSN PARK 0.2914 LINN SWTR 0.0000 4H EXT 0.0520 Total 10.9696	<b>Code 50901</b> Value \$103,177,317 LINN CNTY 3.6136 ESD LBL 0.3049 LBCC 0.6736 CORVLS SD 7.6546 CORVLS RFD 2.1140 LINN SWTR 0.0000 4H EXT 0.0520 Total 14.4127	<b>Code 55202</b> Value \$1,666,596 LINN CNTY 3.6136 ESD LBL 0.3049 LBCC 0.6736 C LINN SD 5.0345 HALSEY CTY 6.7303 LINN SWTR 0.0000 4H EXT 0.0520 Total 16.4089	<b>Code 55208</b> Value \$392,532 LINN CNTY 3.6136 ESD LBL 0.3049 LBCC 0.6736 C LINN SD 5.0345 SW HM FIRE/AM 1.8698 LINN SWTR 0.0000 4H EXT 0.0520 Total 11.5484	<b>Code 55219</b> <b>BROWNSVILLE</b> Value \$81,982,628 LINN CNTY 3.6136 ESD LBL 0.3049 LBCC 0.6736 C LINN SD 5.0345 BRNSVL CTY 11.0023 BRNSVL RFD 2.2213 LINN SWTR 0.0000 4H EXT 0.0520 Total 22.9022
<b>Code 14012</b> Value \$395,243 LINN CNTY 3.6136 ESD WILL 0.2967 LBCC 0.6736 JEFFRSN SD 4.8468 SCIO RFD 1.2745 JEFFRSN PARK 0.2914 LINN SWTR 0.0000 4H EXT 0.0520 Total 11.0486	<b>Code 14017</b> Value \$3,890,481 LINN CNTY 3.6136 ESD WILL 0.2967 LBCC 0.6736 JEFFRSN SD 4.8468 JEFFRSN RFD 1.1955 JEFFRSN PARK 0.2914 SANT WTR 0.0000 LINN SWTR 0.0000 4H EXT 0.0520 Total 10.9696	<b>Code 50902</b> Value \$380,439 LINN CNTY 3.6136 ESD LBL 0.3049 LBCC 0.6736 CORVLS SD 7.6546 CORVLS RFD 2.1140 LINN SWTR 0.0000 4H EXT 0.0520 Total 12.2987	<b>Code 55203</b> Value \$111,089,029 LINN CNTY 3.6136 ESD LBL 0.3049 LBCC 0.6736 C LINN SD 5.0345 BRNSVL RFD 2.2213 LINN SWTR 0.0000 4H EXT 0.0520 Total 11.8999	<b>Code 55209</b> Value \$308,571 LINN CNTY 3.6136 ESD LBL 0.3049 LBCC 0.6736 C LINN SD 5.0345 LINN SWTR 0.0000 4H EXT 0.0520 Total 9.6786	<b>Code 55220</b> Value \$145,283,560 LINN CNTY 3.6136 ESD LBL 0.3049 LBCC 0.6736 C LINN SD 5.0345 HLY/SHD RFD 0.9894 LINN SWTR 0.0000 4H EXT 0.0520 Total 10.6680
		<b>Code 50903</b> Value \$7,792,169 LINN CNTY 3.6136 ESD LBL 0.3049 LBCC 0.6736 CORVLS SD 7.6546 ALBANY RFD 2.1500 LINN SWTR 0.0000 4H EXT 0.0520 Total 14.4487	<b>Code 55204</b> Value \$115,028,105 LINN CNTY 3.6136 ESD LBL 0.3049 LBCC 0.6736 C LINN SD 5.0345 HLY/SHD RFD 0.9894 LINN SWTR 0.0000 4H EXT 0.0520 Total 10.6680	<b>Code 55210</b> Value \$16,652,984 LINN CNTY 3.6136 ESD LBL 0.3049 LBCC 0.6736 C LINN SD 5.0345 HLY/SHD RFD 0.9894 LINN SWTR 0.0000 4H EXT 0.0520 Total 10.6680	<b>Code 55211</b> Value \$2,472,681 LINN CNTY 3.6136 ESD LBL 0.3049 LBCC 0.6736 C LINN SD 5.0345 HARSBG RFD 1.1299 LINN SWTR 0.0000 4H EXT 0.0520 Total 10.8085

Tax rates are shown in dollars per thousand of taxable value. Rates are before Measure 5 compression.

~ District Abbreviations ~

4H EXT	4H Extension Dist	HARSBG UR	Harrisburg Redevelop	MILRSBG CTY	Millersburg City
ALBANY CTY	Albany City	HLY/SHD RFD	Halsey/Shed Rural Fire	MOHAWK RFD	Mohawk Valley Rurl Fire
ALBANY RFD	Albany Rural Fire	IDANHA CTY	Idanha City	MONROE RFD	Monroe Rural Fire
ALBANY SD	Albany School	IDANHA RFD	Idanha Rural Fire	MONROE SD	Monroe School
ALBANY UR	Central Albany Revit	JEFFRSN PARK	Jefferson Park Rec	N LEB WTR	North Lebanon Water
BENTON LIB	Benton Co Library	JEFFRSN RFD	Jefferson Rural Fire	N SANT SD	North Santiam School
BRNSVL CTY	Brownsville City	JEFFRSN SD	Jefferson School	OAKVL CNTR	Oak Creek Comm Cntr
BRNSVL RFD	Brownsville Rural Fire	LANE CC	Lane CC	S SANT WTR	South Santiam Water
C LINN SD	Central Linn School	LBCC	Linn Benton CC	SANT CAN SD	Santiam Canyon School
CHEM CC	Chemeketa CC	LEB AQUA CNTR	Lebanon Aquatic Center	SANT WTR	Santiam Water
CHEM LIB	Chemeketa Library	LEB UR II	Lebanon NW UR II	SCIO CTY	Scio City
CORVLS RFD	Corvallis Rural Fire	LEB UR III	Lebanon Ch Lake UR III	SCIO RFD	Scio Rural Fire
CORVLS SD	Corvallis School	LEB UR IV	Lebanon N Gateway IV	SCIO SD	Scio School
DEV/CON WTR	Dever Conner Water	LEBANON CTY	Lebanon City	SODAVLE CTY	Sodaville City
ESD LANE	Lane ESD	LEBANON RFD	Lebanon Rural Fire	STAYTON RFD	Stayton Rural Fire
ESD LBL	LinnBtnLinc ESD	LEBANON SD	Lebanon School	SW HM AM	Sweet Home Ambulance
ESD WILL	Willamette Regional ESD	LINN CNTY	Linn County	SW HM CEM	Sweet Home Cemetary
EUGENE SD	Eugene School	LINN S/WTR	Linn Soil & Water Consv	SW HM CTY	Sweet Home City
GATES CTY	Gates City	LY/MEH WTR	Lyons/Mehama Water	SW HM FIRE/AM	Sweet Home Fire & Ambul
GATES RFD	Gates Rural Fire	LYONS CTY	Lyons City	SW HM SD	Sweet Home School
HALSEY CTY	Halsey City	LYONS RFD	Lyons Rural Fire	TANGENT CTY	Tangent City
HARSBG CTY	Harrisburg City	MARCOLA SD	Marcola School	TANGENT RFD	Tangent Rural Fire Dist.
HARSBG RFD	Harrisburg Rural Fire	MILL CTY	Mill City	WTRLOO CTY	Waterloo City
HARSBG SD	Harrisburg School	MILL CTY RFD	Mill City Rural Fire		

This summary is designed to provide information about the current Assessment and Tax Roll. More detailed or specific information is available from our office, located in room 215 of the County Courthouse at 300 4th Ave SW in Albany.

If you have questions concerning property you own or more general questions about the property tax system, you are welcome to discuss your situation with a member of our staff. If you are eligible for a program to help reduce your property taxes, we will gladly help in any way we can.

Ad valorem taxes are based on the assessed value of your property as of January 1st. Those taxes provide funds for the operation of schools, cities, fire districts, and other miscellaneous taxing districts.

The Assessor does not tax, but values your property through methods prescribed by state law and regulation. The Assessor does not determine the amount of money your taxing district receives. To control spending, you should take an active interest in local budget meetings and elections. You are, in effect, purchasing services with your tax dollars.

Taxes are due and payable in three installments. The first third is due on November 15th, the second third on February 15th, and the final third on May 16th. A three percent discount will be allowed on taxes paid in full on or before November 15th. A two percent discount will be allowed if two-thirds of the total taxes are paid on or before November 15th. No discount will be allowed on taxes paid after November 15th. Interest at a rate of 1-1/3% per month or fraction of a month will be charged on any payment made after the installment due date.

By law this office must credit your property tax payments to the earliest year for which taxes are due on your property. In order to receive a discount on your current year's bill, all prior year's taxes, penalties and interest must first be fully paid.

I, Mark Noakes, Linn County Assessor/Tax Collector, State of Oregon, do hereby certify that the assessed valuations, tax levies and taxes set forth herein contained, are true and correct copies of the originals, as the same appears on file in my office and custody.

**Mark Noakes**

Linn County Assessor / Tax Collector

Mailing Address:  
Linn County Assessment and Taxation  
PO Box 100  
Albany OR 97321

Location:  
Linn county Courthouse, Room 215  
Phone: (541) 967-3808

Web Site:  
**www.co.linn.or.us**