



2011-2012



SUMMARY OF ASSESSMENT AND TAX ROLL - LINN COUNTY, OREGON

VALUATION for Tax Year beginning July 1, 2011

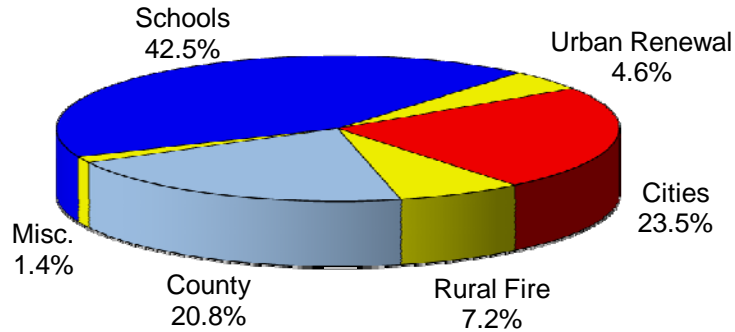
	Real Market Value	Assessed Value	Service Exemption	Taxable Value
Real Property	10,180,868,548	7,361,380,496	25,663,003	7,335,717,493
Manufactured Structures	123,204,770	113,366,190	1,855,951	111,510,239
Personal Property	231,303,630	231,303,630		231,303,630
Public Utilities	344,519,151	328,812,962		328,812,962
Total	10,879,896,099	8,034,863,278	27,518,954	8,007,344,324

Real Market Value (RMV) is an estimate of selling prices.

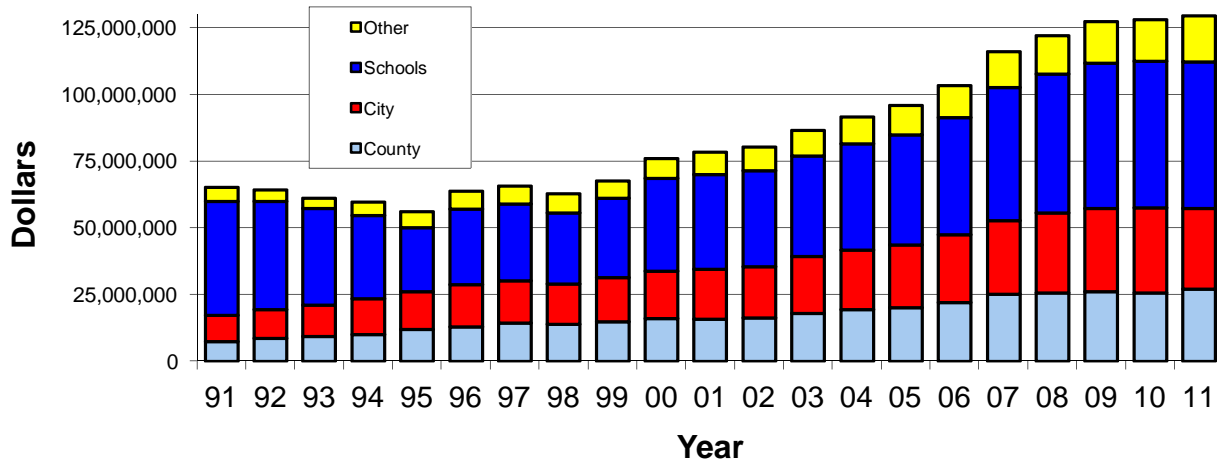
Assessed Value (AV) is the value as calculated under Measure 50.

Taxable Value is Assessed Value less Disabled Veteran's and Active Service Exemptions.

DISTRIBUTION of TAX DOLLARS



TAX DOLLARS by YEAR



ASSESSMENT & TAXES by DISTRICT

	REAL MARKET VALUE	TAXABLE VALUE	LESS URBAN RENEWAL	TOTAL VALUE TO COMPUTE TAX RATES	MAXIMUM TAX RATE	TAXES IMPOSED
COUNTY	10,879,896,099	8,007,344,324	306,263,523	7,701,080,801	4.0436	26,994,486.67
CITIES						
Albany	3,201,432,516	2,760,000,798	111,196,690	2,648,804,108	7.5155	20,056,543.45
Brownsville	105,531,547	82,657,728		82,657,728	10.9693	906,447.05
Gates	3,612,951	3,260,633		3,260,633	0.2824	920.78
Halsey	56,402,592	47,850,655		47,850,655	6.7217	321,637.73
Harrisburg	215,183,753	174,354,303	14,941,327	159,412,976	3.5120	612,323.84
Idanha	4,067,851	3,094,720		3,094,720	2.5029	7,745.82
Lebanon	1,096,552,335	920,293,146	177,060,085	743,233,061	5.8663	4,967,203.64
Lyons	93,952,830	71,045,556		71,045,556	1.8926	134,460.85
Mill City	76,473,907	62,617,021		62,617,021	4.1578	260,348.90
Millersburg	407,671,703	356,944,081		356,944,081	1.7000	606,805.13
Scio	47,080,281	39,149,807		39,149,807	4.9057	192,057.11
Sodaville	16,146,643	13,497,094		13,497,094	0.4552	6,143.79
Sweet Home	446,078,358	366,150,278		366,150,278	8.6357	2,337,785.40
Tangent	157,851,306	0		0	0.0000	0.00
Waterloo	11,083,479	0		0	0.0000	0.00
TOTAL						30,410,423.49
RURAL FIRE PROTECTION DISTRICTS						
Albany	644,104,557	476,185,374		476,185,374	2.1500	1,023,798.18
Brownsville	342,274,079	203,438,395		203,438,395	2.2287	453,358.55
Corvallis	161,371,175	122,882,100		122,882,100	2.1140	259,772.39
Gates	31,914,025	21,154,163		21,154,163	2.3000	48,654.53
Halsey/Shedd	567,223,798	367,285,675		367,285,675	0.9894	363,391.94
Harrisburg	506,979,532	318,051,465	14,948,327	303,103,138	1.1299	342,477.71
Idanha	5,535,311	4,127,960		4,127,960	1.6592	6,849.09
Jefferson	424,635,780	280,122,460		280,122,460	1.1955	334,886.41
Lebanon	2,200,455,253	1,648,045,455	180,109,031	1,467,936,424	2.4735	3,477,489.93
Lyons	235,965,583	169,341,429		169,341,429	1.6469	278,888.23
Mill City	108,340,216	87,886,210		87,886,210	1.8048	158,487.17
Monroe	5,070	1,610		1,610	0.0000	0.00
Mohawk	127,560	79,860		79,860	1.9126	152.74
Scio	556,187,948	310,195,513		310,195,513	1.9789	613,845.62
Stayton	148,821,800	86,378,897		86,378,897	1.5663	135,295.11
Sw Hm Fire/Am	886,894,747	659,115,623		659,115,623	1.8710	1,233,223.06
Sw Hm Am	95,908,468	75,567,869		75,567,869	0.3500	26,448.81
Tangent	371,322,707	239,014,063		239,014,063	2.5739	615,196.97
TOTAL						9,372,216.44
SCHOOL DISTRICTS						
Albany	4,684,779,393	3,792,002,920	111,196,690	3,680,806,230	6.1893	22,518,866.55
Central Linn	886,407,178	561,059,160		561,059,160	4.6179	2,489,313.36
Corvallis	170,949,679	127,531,469		127,531,469	7.6457	846,678.23
Eugene	14,633,692	10,175,260		10,175,260	7.5351	69,854.32
Harrisburg	500,738,070	311,156,141	14,948,327	296,207,814	6.0778	1,779,205.31
Jefferson	58,653,675	29,284,339		29,284,339	4.8468	136,293.28
Lebanon	2,432,996,497	1,752,661,452	180,118,506	1,572,542,946	7.2476	11,203,002.98
Marcola	263,050	64,200		64,200	4.6687	299.73
Monroe	5,070	1,610		1,610	0.0000	0.00
N Santiam	368,089,418	239,869,487		239,869,487	5.0758	1,203,173.19
Santiam Can	217,276,533	160,605,819		160,605,819	4.8880	755,933.76
Scio	452,561,201	250,192,014		250,192,014	5.4177	1,326,719.22
Sweet Home	1,092,542,643	772,740,453		772,740,453	6.6944	4,978,736.55
TOTAL						47,308,076.48

LINN COUNTY TAX SUMMARY

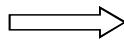
2011-2012

	REAL MARKET VALUE	TAXABLE VALUE	LESS URBAN RENEWAL	TOTAL VALUE TO COMPUTE TAX RATES	MAXIMUM TAX RATE	TAXES IMPOSED
EDUCATIONAL SERVICE DISTRICTS						
Lane	14,896,742	10,239,460		10,239,460	0.2232	2,276.99
Linn Ben Linc	10,438,256,264	7,727,951,038	306,263,523	7,421,687,515	0.3049	2,208,251.33
Willamette	426,743,093	269,153,826		269,153,826	0.2967	78,543.90
TOTAL						2,289,072.22
COMMUNITY COLLEGES and LIBRARIES						
Chemeketa CC	431,018,381	311,463,829		311,463,829	0.8803	268,816.59
Lane CC	515,634,812	321,395,601	14,948,327	306,447,274	0.8782	270,176.56
Linn Benton CC	9,933,242,906	7,374,484,894	291,315,196	7,083,169,698	0.6814	4,744,479.50
Benton Lib	16,498,010	13,499,260		13,499,260	0.3947	5,328.12
Chemeketa Lib	431,018,381	311,463,829		311,463,829	0.0818	25,477.69
TOTAL						5,314,278.46
MISCELLANEOUS DISTRICTS						
4H Extension	10,879,896,099	8,007,344,324	306,263,523	7,701,080,801	0.0520	396,494.68
Dev/Con Wtr	36,084,296	18,057,948		18,057,948	0.1614	2,914.57
Jef Pk Rec	58,940,545	29,550,369		29,550,369	0.2914	8,610.92
Leb Aqua Cntr	2,432,996,497	1,752,661,452	180,118,506	1,572,542,946	0.2400	357,422.78
Lyons/Meh Wtr	132,693,152	104,154,619		104,154,619	1.0279	107,060.65
N Lebanon Wtr	134,952,018	81,941,147		81,941,147	0.1420	11,309.64
Sw Hm Cem	767,563,828	562,520,850		562,520,850	0.2166	121,842.03
S Santiam Wtr	28,367,423	11,996,296		11,996,296	1.0044	12,049.09
TOTAL						1,017,704.36
URBAN RENEWAL DISTRICTS						
Albany	3,201,432,516	2,760,000,798		2,760,000,798	6.5860	1,710,994.79
Harrisburg	215,190,753	174,361,303		174,361,303	1.4549	253,658.34
Lebanon II	1,101,412,623	922,626,067		922,626,067	4.4426	3,634,664.49
Lebanon III	1,110,893,680	931,009,545		931,009,545	2.9960	220,223.62
Lebanon IV	1,096,552,335	920,293,146		920,293,146	0.2086	170,271.26
TOTAL						5,989,812.50

SPECIAL ASSESSMENTS

DELINQUENT SEWER ASSESSMENTS:

Albany	23,452.42
Brownsville	4,395.32
Halsey	54.00
Lebanon	21,220.45
Millersburg	5,725.28
Sweet Home	19,930.47
Tangent	1,406.14
TOTAL	76,184.08



Forest Patrol	189,624.95
Forest Patrol Surcharge	106,067.50
Little Muddy Creek Water Control	6,688.71
Fertile District Imp Co	3,301.46
Grand Prairie Water Control Dist.	16,549.58
Grand Prairie Water Control Dist. #2	178,274.19
Mobile Home Ombudsman Fee	24,691.19
Additional Farmland Tax	3,180.63
Additional Forestland Tax	4,812.48
Delinquent Sewer	76,184.08
TOTAL	609,374.77
Corrections	67,563.23
Late Filing Penalties	98,771.90

TOTAL IMPOSED AD VALOREM TAXES AND ASSESSMENTS

129,471,780.52

IMPOSED AD VALOREM TAX BY PROPERTY TYPE

REAL PROPERTY	119,254,047.69
PERSONAL PROPERTY	3,637,591.27
MANUFACTURED STRUCTURES	1,697,820.88
UTILITIES	4,882,320.68
TOTAL	129,471,780.52

LINN COUNTY TAX SUMMARY

2011-2012

CODE 00101 Value \$1,610 LINN CNTY 4.0436 ESD LBL 0.3049 LBCC 0.6814 MONROE SD 0.0000 MONROE RFD 0.0000 4H EXT 0.0520 Total 5.0819	CODE 00707 Value \$35,003,163 LINN CNTY 4.0436 ESD LBL 0.3049 LANE CC 0.8782 HARSBG SD 6.0778 HARSBG RFD 1.1299 LINN S/WTR 0.0000 4H EXT 0.0520 Total 12.4864	CODE 00801 ALBANY Value \$1,999,999,700 LINN CNTY 3.8808 LANE CC 0.2949 LBCC 0.6590 ALBANY SD 5.9848 ALBANY CTY 7.5155 LINN S/WTR 0.0000 4H EXT 0.0500 ALBANY UR 0.6586 Total 19.0436	CODE 00807 Value \$139,484,850 LINN CNTY 4.0436 ESD LBL 0.3049 LBCC 0.6814 ALBANY SD 6.1893 MILRSBG CTY 1.7000 JEFFRSN RF 1.1955 LINN S/WTR 0.0000 4H EXT 0.0520 Total 14.1667	CODE 00814 Value \$1,664,583 LINN CNTY 4.0436 ESD LBL 0.3049 LBCC 0.6814 ALBANY SD 6.1893 HLY/SHD RFD 0.9894 LINN S/WTR 0.0000 4H EXT 0.0520 Total 12.2606	CODE 00820 Value \$2,709,034 LINN CNTY 4.0436 ESD LBL 0.3049 LBCC 0.6814 ALBANY SD 6.1893 SCIO RFD 1.9789 N LEB WTR 0.1420 LINN S/WTR 0.0000 4H EXT 0.0520 Total 13.3921
CODE 00701 HARRISBURG Value \$155,673,151 LINN CNTY 3.9345 ESD LBL 0.2788 LANE CC 0.8252 HARSBG SD 5.5569 HARSBG CTY 3.5120 HARSBG RFD 1.0330 LINN S/WTR 0.0000 4H EXT 0.0476 HARSBG UR 1.4549 Total 16.6429	CODE 00708 Value \$18,542,592 LINN CNTY 3.9345 ESD LBL 0.2788 LANE CC 0.8252 HARSBG SD 5.5569 HARSBG CTY 3.5120 HARSBG RFD 1.0330 LINN S/WTR 0.0000 4H EXT 0.0476 HARSBG UR 1.4549 Total 16.6429	CODE 00802 Value \$116,974,200 LINN CNTY 4.0436 ESD LBL 0.3049 LBCC 0.6814 ALBANY SD 6.1893 ALBANY RFD 2.1500 LINN S/WTR 0.0000 4H EXT 0.0520 Total 13.4212	CODE 00808 Value \$103,059,465 LEBANON LINN CNTY 4.0436 ESD LBL 0.3049 LBCC 0.6814 ALBANY SD 6.1893 TANGENT RFD 2.5739 LINN S/WTR 0.0000 4H EXT 0.0520 Total 13.8451	CODE 00815 Value \$822,180 LINN CNTY 4.0436 ESD LBL 0.3049 LBCC 0.6814 ALBANY SD 6.1893 LEBANON RFD 2.4735 LINN S/WTR 0.0000 4H EXT 0.0520 Total 13.7447	CODE 00821 Value \$9,574,229 LINN CNTY 4.0436 ESD LBL 0.3049 LBCC 0.6814 ALBANY SD 6.1893 ALBANY RFD 2.1500 N LEB WTR 0.1420 LINN S/WTR 0.0000 4H EXT 0.0520 Total 13.5632
CODE 00702 Value \$73,707,379 LINN CNTY 4.0436 ESD LBL 0.3049 LANE CC 0.8782 HARSBG SD 6.0778 HARSBG RFD 1.1299 LINN S/WTR 0.0000 4H EXT 0.0520 Total 12.4864	CODE 00709 Value \$19,989,800 LINN CNTY 4.0436 ESD LBL 0.3049 LANE CC 0.8782 HARSBG SD 6.0778 HARSBG RFD 1.1299 LINN S/WTR 0.0000 4H EXT 0.0520 Total 12.4864	CODE 00803 Value \$6,459,800 LINN CNTY 4.0436 ESD LBL 0.3049 LBCC 0.6814 ALBANY SD 6.1893 LINN S/WTR 0.0000 4H EXT 0.0520 Total 11.2712	CODE 00809 Value \$97,347,857 LINN CNTY 4.0436 ESD LBL 0.3049 LBCC 0.6814 ALBANY SD 6.1893 JEFFRSN RF 1.1955 LINN S/WTR 0.0000 4H EXT 0.0520 Total 12.4667	LINN CNTY 4.0436 ESD LBL 0.3049 LBCC 0.6814 ALBANY SD 6.1893 CORVLS RFD 2.1140 LINN S/WTR 0.0000 4H EXT 0.0520 Total 13.3852	CODE 00822 Value \$57,570 LINN CNTY 4.0436 ESD LBL 0.3049 LBCC 0.6814 ALBANY SD 6.1893 N LEB WTR 0.1420 LINN S/WTR 0.0000 4H EXT 0.0520 Total 11.4132
CODE 00703 Value \$433,493 LINN CNTY 4.0436 ESD LBL 0.3049 LANE CC 0.8782 HARSBG SD 6.0778 BRNSVL RFD 2.2287 LINN S/WTR 0.0000 4H EXT 0.0520 Total 13.5852	CODE 00710 Value \$59,940 LINN CNTY 4.0436 ESD LBL 0.3049 LANE CC 0.8782 HARSBG SD 6.0778 HARSBG RFD 1.1299 LINN S/WTR 0.0000 4H EXT 0.0520 Total 12.4864	Value \$40,836,473 LINN CNTY 4.0436 ESD LBL 0.3049 LBCC 0.6814 ALBANY SD 6.1893 ALBANY RFD 2.1500 LINN S/WTR 0.0000 4H EXT 0.0520 Total 13.4212	CODE 00810 Value \$7,182,045 LINN CNTY 4.0436 ESD LBL 0.3049 LBCC 0.6814 ALBANY SD 6.1893 ALBANY SD 6.1893 JEFFRSN RF 1.1955 DEV/CON WTR 0.1614 LINN S/WTR 0.0000 4H EXT 0.0520 Total 12.6281	Value \$21,561,775 LINN CNTY 4.0436 ESD LBL 0.3049 LBCC 0.6814 ALBANY SD 6.1893 SCIO RFD 1.9789 LINN S/WTR 0.0000 4H EXT 0.0520 Total 13.2501	CODE 00823 Value \$3,060,263 LINN CNTY 4.0436 ESD LBL 0.3049 LBCC 0.6814 ALBANY SD 6.1893 LEBANON RFD 2.4735 N LEB WTR 0.1420 LINN S/WTR 0.0000 4H EXT 0.0520 Total 13.8867
CODE 00704 Value \$1,382,790 LINN CNTY 4.0436 ESD LBL 0.3049 LANE CC 0.8782 HARSBG SD 6.0778 HLY/SHD RFD 0.9894 LINN S/WTR 0.0000 4H EXT 0.0520 Total 12.3459	CODE 00711 Value \$7,000 LINN CNTY 3.9345 ESD LBL 0.2788 LANE CC 0.8252 HARSBG SD 5.5569 HARSBG RFD 1.0330 LINN S/WTR 0.0000 4H EXT 0.0476 HARSBG UR 1.1258 Total 12.8018	MILLERSBURG Value \$212,930,841 LINN CNTY 4.0436 ESD LBL 0.3049 LBCC 0.6814 ALBANY SD 6.1893 MILRSBG CTY 1.7000 ALBANY RFD 2.1500 LINN S/WTR 0.0000 4H EXT 0.0520 Total 15.1212	CODE 00811 TANGENT Value \$116,545,712 LINN CNTY 4.0436 ESD LBL 0.3049 LBCC 0.6814 ALBANY SD 6.1893 TANGENT CTY 0.0000 TANGENT RFD 2.5739 LINN S/WTR 0.0000 4H EXT 0.0520 Total 13.8451	Value \$2,321,221 LINN CNTY 4.0436 ESD LBL 0.3049 LBCC 0.6814 ALBANY SD 6.1893 S SANT WTR 1.0044 LINN S/WTR 0.0000 4H EXT 0.0520 Total 14.4256	CODE 00824 Value \$5,381,418 LINN CNTY 4.0436 ESD LBL 0.3049 LBCC 0.6814 ALBANY SD 6.1893 JEFFRSN RF 1.1955 S SANT WTR 1.0044 LINN S/WTR 0.0000 4H EXT 0.0520 Total 13.4711
CODE 00705 Value \$5,483,993 LINN CNTY 4.0436 ESD LBL 0.3049 LANE CC 0.8782 HARSBG SD 6.0778 LINN S/WTR 0.0000 4H EXT 0.0520 Total 11.3565	CODE 00712 Value \$138,560 LINN CNTY 3.9345 ESD LBL 0.2788 LANE CC 0.8252 HARSBG SD 5.5569 HARSBG CTY 3.5120 LINN S/WTR 0.0000 4H EXT 0.0476 HARSBG UR 1.3580 Total 15.5130	CODE 00806 Value \$3,887,110 LINN CNTY 4.0436 ESD LBL 0.3049 LBCC 0.6814 ALBANY SD 6.1893 MILRSBG CTY 1.7000 LINN S/WTR 0.0000 4H EXT 0.0520 Total 12.9712	4H EXT 0.0520 LINN S/WTR 0.0000 4H EXT 0.0520 Total 11.2712	Value \$369,468 LINN CNTY 4.0436 ESD LBL 0.3049 LBCC 0.6814 ALBANY SD 6.1893 SCIO RFD 1.9789 S SANT WTR 1.0044 LINN S/WTR 0.0000 4H EXT 0.0520 Total 14.2545	CODE 00825 Value \$5,184,521 LINN CNTY 4.0436 ESD LBL 0.3049 LBCC 0.6814 ALBANY SD 6.1893 JEFFRSN RF 1.1955 LINN S/WTR 0.0000 4H EXT 0.0520 Total 12.4667
CODE 00706 Value \$734,280 LINN CNTY 4.0436 ESD LBL 0.3049 LANE CC 0.8782 HARSBG SD 6.0778 LINN S/WTR 0.0000 4H EXT 0.0520 Total 11.3565					

Tax rates are shown in dollars per thousand of taxable value. Rates are before Measure 5

LINN COUNTY TAX SUMMARY

2011-2012

CODE 00826 Value \$82,250,476 LINN CNTY 4.0436 ESD LBL 0.3049 LBCC 0.6814 ALBANY SD 6.1893 ALBANY RFD 2.1500 LINN S/WTR 0.0000 4H EXT 0.0520 Total 13.4212	CODE 00834 Value \$23,865,661 LINN CNTY 4.0436 ESD LBL 0.3049 LBCC 0.6814 ALBANY SD 6.1893 HLY/SHD RFD 0.9894 OAKVL CNTR 0.0000 LINN S/WTR 0.0000 4H EXT 0.0520 Total 12.2606	CODE 00846 Value \$353,869,673 LINN CNTY 3.8808 ESD LBL 0.2949 LBCC 0.6590 ALBANY SD 5.9848 ALBANY CTY 7.5155 LINN S/WTR 0.0000 4H EXT 0.0500 ALBANY UR 0.6586 Total 19.0436	CODE 00904 SODAVILLE Value \$13,450,844 LINN CNTY 4.0436 ESD LBL 0.3049 LBCC 0.6814 LEBANON SD 7.2476 LEBANON CTY 0.4552 LEBANON RFD 2.4735 LINN S/WTR 0.0000 LEB AQUA CNTR 0.2400 4H EXT 0.0520 Total 15.4982	CODE 00916 Value \$12,518,200 LINN CNTY 3.7562 ESD LBL 0.2455 LBCC 0.5486 LEBANON SD 5.8337 LEBANON CTY 5.8663 LEBANON RFD 2.0296 N LEB WTR 0.1420 LINN S/WTR 0.0000 LEB AQUA CNTR 0.1933 4H EXT 0.0420 LEBANON UR 4.9508 Total 23.6080	CODE 00922 Value \$92,090 LINN CNTY 3.7562 ESD LBL 0.2455 LBCC 0.5486 LEBANON SD 5.8337 LEBANON CTY 5.8663 LEBANON RFD 2.0296 N LEB WTR 0.1420 LEB AQUA CNTR 0.1933 4H EXT 0.0420 LEBANON UR 4.9508 Total 23.6080
CODE 00827 Value \$212,355,916 LINN CNTY 3.8808 ESD LBL 0.2949 LBCC 0.6590 ALBANY SD 5.9848 ALBANY CTY 7.5155 LINN S/WTR 0.0000 4H EXT 0.0500 ALBANY UR 0.6586 Total 19.0436	CODE 00835 Value \$5,469,800 LINN CNTY 4.0436 ESD LBL 0.3049 LBCC 0.6814 ALBANY SD 6.1893 CORVLS RFD 2.1140 OAKVL CNTR 0.0000 LINN S/WTR 0.0000 4H EXT 0.0520 Total 13.3852	CODE 00847 Value \$489,320 LINN CNTY 3.8808 ESD LBL 0.2949 LBCC 0.6590 ALBANY SD 5.9848 ALBANY CTY 7.5155 LINN S/WTR 0.0000 4H EXT 0.0500 ALBANY UR 0.6586 Total 19.0436	CODE 00905 LEBANON Value \$573,619,857 LINN CNTY 3.7562 ESD LBL 0.2455 LBCC 0.5486 LEBANON SD 5.8337 LEBANON CTY 5.8663 LEBANON RFD 2.0296 LINN S/WTR 0.0000 LEB AQUA CNTR 0.1933 4H EXT 0.0420 LEBANON UR 4.9508 Total 23.4660	CODE 00917 Value \$23,950,666 LINN CNTY 3.7562 ESD LBL 0.2455 LBCC 0.5486 LEBANON SD 5.8337 LEBANON CTY 5.8663 LEBANON RFD 2.0296 LINN S/WTR 0.0000 LEB AQUA CNTR 0.1933 4H EXT 0.0420 LEBANON UR 4.9508 Total 23.4660	CODE 00923 Value \$115,200 LINN CNTY 3.7562 ESD LBL 0.2455 LBCC 0.5486 LEBANON SD 5.8337 LEBANON CTY 5.8663 LINN S/WTR 0.0000 LEB AQUA CNTR 0.1933 4H EXT 0.0420 LEBANON UR 4.5069 Total 20.9925
CODE 00828 Value \$1,898,400 LINN CNTY 4.0436 ESD LBL 0.3049 LBCC 0.6814 ALBANY SD 6.1893 TANGENT RFD 2.5739 LINN S/WTR 0.0000 4H EXT 0.0520 Total 13.8451	CODE 00836 Value \$158,930 LINN CNTY 4.0436 ESD LBL 0.3049 LBCC 0.6814 ALBANY SD 6.1893 OAKVL CNTR 0.0000 LINN S/WTR 0.0000 4H EXT 0.0520 Total 11.2712	CODE 00848 Value \$89,860 LINN CNTY 3.8808 ESD LBL 0.2949 LBCC 0.6590 ALBANY SD 5.9848 ALBANY CTY 7.5155 LINN S/WTR 0.0000 4H EXT 0.0500 ALBANY UR 0.6586 Total 19.0436	CODE 00907 Value \$2,868,428 LINN CNTY 4.0436 ESD LBL 0.3049 LBCC 0.6814 LEBANON SD 7.2476 LEBANON RFD 2.4735 N LEB WTR 0.1420 LINN S/WTR 0.0000 LEB AQUA CNTR 0.2400 4H EXT 0.0520 Total 15.1850	CODE 00918 Value \$23,518,889 LINN CNTY 4.0436 ESD LBL 0.3049 LBCC 0.6814 LEBANON SD 7.2476 LEBANON RFD 2.4735 LEB AQUA CNTR 0.2400 4H EXT 0.0520 Total 15.0430	CODE 00924 Value \$9,000 LINN CNTY 3.7562 ESD LBL 0.2455 LBCC 0.5486 LEBANON SD 5.8337 LEBANON CTY 5.8663 LEB AQUA CNTR 0.1933 4H EXT 0.0420 LEBANON UR 4.5069 Total 20.9925
CODE 00829 Value \$6,539,682 LINN CNTY 4.0436 ESD LBL 0.3049 LBCC 0.6814 ALBANY SD 6.1893 TANGENT RFD 2.5739 LINN S/WTR 0.0000 4H EXT 0.0520 Total 13.8451	CODE 00840 Value \$47,560 LINN CNTY 4.0436 ESD LBL 0.3049 LBCC 0.6814 ALBANY SD 6.1893 MILRSBG CTY 1.7000 ALBANY RFD 2.1500 LINN S/WTR 0.0000 4H EXT 0.0520 Total 15.1212	CODE 00901 Value \$46,250 LINN CNTY 4.0436 ESD LBL 0.3049 LBCC 0.6814 LEBANON SD 7.2476 SODAVLE CTY 0.4552 LINN S/WTR 0.0000 LEB AQUA CNTR 0.2400 4H EXT 0.0520 Total 13.0247	CODE 00908 Value \$17,649,465 LINN CNTY 4.0436 ESD LBL 0.3049 LBCC 0.6814 LEBANON SD 7.2476 SCIO RFD 1.9789 LINN S/WTR 0.0000 LEB AQUA CNTR 0.2400 4H EXT 0.0520 Total 14.5484	CODE 00919 Value \$840,422 LINN CNTY 4.0436 ESD LBL 0.3049 LBCC 0.6814 LEBANON SD 7.2476 LEB AQUA CNTR 0.2400 4H EXT 0.0520 Total 12.5695	CODE 00925 Value \$57,648,100 LINN CNTY 3.7562 ESD LBL 0.2455 LBCC 0.5486 LEBANON SD 5.8337 LEBANON CTY 5.8663 LEBANON RFD 2.0296 LINN S/WTR 0.0000 LEB AQUA CNTR 0.1933 4H EXT 0.0420 LEBANON UR 4.9508 Total 23.4660
CODE 00830 Value \$193,198,779 LINN CNTY 3.8808 ESD LBL 0.2949 LBCC 0.6590 ALBANY SD 5.9848 ALBANY CTY 7.5155 LINN S/WTR 0.0000 4H EXT 0.0500 ALBANY UR 0.6586 Total 19.0436	CODE 00842 Value \$266,030 LINN CNTY 4.0436 ESD LBL 0.3049 LBCC 0.6814 ALBANY SD 6.1893 MILRSBG CTY 1.7000 JEFFRSN RF 1.1955 JEFFRSN PARK 0.2914 LINN S/WTR 0.0000 4H EXT 0.0520 Total 14.4581	CODE 00902 Value \$458,962,416 LINN CNTY 4.0436 ESD LBL 0.3049 LBCC 0.6814 LEBANON SD 7.2476 LEBANON RFD 2.4735 LINN S/WTR 0.0000 LEB AQUA CNTR 0.2400 4H EXT 0.0520 Total 15.0430	CODE 00909 Value \$855,250 LINN CNTY 4.0436 ESD LBL 0.3049 LBCC 0.6814 LEBANON SD 7.2476 LINN S/WTR 0.0000 LEB AQUA CNTR 0.2400 4H EXT 0.0520 Total 12.5695	CODE 00920 Value \$332,280 LINN CNTY 4.0436 ESD LBL 0.3049 LBCC 0.6814 LEBANON SD 7.2476 LEBANON RFD 2.4735 N LEB WTR 0.1420 LEB AQUA CNTR 0.2400 4H EXT 0.0520 Total 15.1850	CODE 00926 Value \$1,000 LINN CNTY 3.7562 ESD LBL 0.2455 LBCC 0.5486 LEBANON SD 5.8337 LEBANON CTY 5.8663 LINN S/WTR 0.0000 LEB AQUA CNTR 0.1933 4H EXT 0.0420 LEBANON UR 4.5069 Total 20.9925
CODE 00833 Value \$851,538 LINN CNTY 4.0436 ESD LBL 0.3049 LBCC 0.6814 ALBANY SD 6.1893 TANGENT RFD 2.5739 OAKVL CNTR 0.0000 LINN S/WTR 0.0000 4H EXT 0.0520 Total 13.8451	Tax rates are shown in dollars per thousand of taxable value. Rates are before Measure 5 compression.		CODE 00903 Value \$25,797,072 LINN CNTY 4.0436 ESD LBL 0.3049 LBCC 0.6814 LEBANON SD 7.2476 LINN S/WTR 0.0000 LEB AQUA CNTR 0.2400 4H EXT 0.0520 Total 12.5695	CODE 00914 Value \$14,690,181 LINN CNTY 4.0436 ESD LBL 0.3049 LBCC 0.6814 LEBANON SD 7.2476 LEBANON RFD 2.4735 LINN S/WTR 0.0000 LEB AQUA CNTR 0.2400 4H EXT 0.0520 Total 15.0430	CODE 00921 Value \$2,496,168 LINN CNTY 3.7562 ESD LBL 0.2455 LBCC 0.5486 LEBANON SD 5.8337 LEBANON CTY 5.8663 LEBANON RFD 2.0296 LEB AQUA CNTR 0.1933 4H EXT 0.0420 LEBANON UR 4.9508 Total 23.4660

LINN COUNTY TAX SUMMARY

2011-2012

CODE 00927 Value \$1,060,080 LINN CNTY 3.8287 ESD LBL 0.2535 LBCC 0.5664 LEBANON SD 6.0243 LEBANON RFD 2.0920 LINN S/WTR 0.0000 LEB AQUA CNTR 0.1995 4H EXT 0.0433 LEBANON UR 3.5819 Total 16.5896	CODE 00935 Value \$195,380 LINN CNTY 4.0436 ESD LBL 0.3049 LBCC 0.6814 LEBANON SD 7.2476 LEBANON RFD 2.4735 N LEB WTR 0.1420 LINN S/WTR 0.0000 LEB AQUA CNTR 0.2400 4H EXT 0.0520 Total 15.1850	CODE 00942 Value \$8,761,363 LINN CNTY 4.0436 ESD LBL 0.3049 LBCC 0.6814 LEBANON SD 7.2476 LEB AQUA CNTR 0.2400 4H EXT 0.0520 Total 12.5695	CODE 00948 Value \$43,578,559 LINN CNTY 4.0436 ESD LBL 0.3049 LBCC 0.6814 LEBANON SD 7.2476 LEBANON RFD 2.4735 N LEB WTR 0.1420 LINN S/WTR 0.0000 LEB AQUA CNTR 0.2400 4H EXT 0.0520 Total 15.1850	CODE 00953 Value \$1,243,841 LINN CNTY 3.8287 ESD LBL 0.2535 LBCC 0.5664 LEBANON SD 6.0243 LEBANON RFD 2.0920 LINN S/WTR 0.0000 LEB AQUA CNTR 0.1995 4H EXT 0.0433 LEBANON UR 3.5819 Total 16.5896	CODE 00958 Value \$80,390 LINN CNTY 3.7562 ESD LBL 0.2455 LBCC 0.5486 LEBANON SD 5.8337 LEBANON CTY 5.8663 LEBANON RFD 2.0296 LINN S/WTR 0.0000 LEB AQUA CNTR 0.1933 4H EXT 0.0420 LEBANON UR 4.9508 Total 23.4660
CODE 00928 Value \$7,000 LINN CNTY 3.8287 ESD LBL 0.2535 LBCC 0.5664 LEBANON SD 6.0243 LEBANON RFD 2.0920 LINN S/WTR 0.0000 LEB AQUA CNTR 0.1995 4H EXT 0.0433 LEBANON UR 3.2004 Total 14.1161	CODE 00936 Value \$331,340 LINN CNTY 4.0436 ESD LBL 0.3049 LBCC 0.6814 LEBANON SD 7.2476 LEBANON RFD 2.4735 N LEB WTR 0.1420 LINN S/WTR 0.0000 LEB AQUA CNTR 0.2400 4H EXT 0.0520 Total 12.5695	CODE 00943 Value \$35,620 LINN CNTY 3.7562 ESD LBL 0.2455 LBCC 0.5486 LEBANON SD 5.8337 LEBANON CTY 5.8663 LEBANON RFD 2.0296 N LEB WTR 0.1420 LEB AQUA CNTR 0.1933 4H EXT 0.0420 LEBANON UR 4.9508 Total 23.6080	CODE 00949 Value \$329,120 LINN CNTY 3.7562 ESD LBL 0.2455 LBCC 0.5486 LEBANON SD 5.8337 LEBANON CTY 5.8663 LEBANON RFD 2.0296 N LEB WTR 0.1420 LINN S/WTR 0.0000 LEB AQUA CNTR 0.1933 4H EXT 0.0420 LEBANON UR 4.9508 Total 23.6080	CODE 00954 Value \$88,095,450 LINN CNTY 3.7562 ESD LBL 0.2455 LBCC 0.5486 LEBANON SD 5.8337 LEBANON CTY 5.8663 LEBANON RFD 2.0296 LINN S/WTR 0.0000 LEB AQUA CNTR 0.1933 4H EXT 0.0420 LEBANON UR 4.9508 Total 23.4660	CODE 00960 Value \$471,600 LINN CNTY 4.0436 ESD LBL 0.3049 LBCC 0.6814 LEBANON SD 7.2476 LINN S/WTR 0.0000 LEB AQUA CNTR 0.2400 4H EXT 0.0520 Total 12.5695
CODE 00931 Value \$15,358,950 LINN CNTY 3.7562 ESD LBL 0.2455 LBCC 0.5486 LEBANON SD 5.8337 LEBANON CTY 5.8663 LEBANON RFD 2.0296 LINN S/WTR 0.0000 LEB AQUA CNTR 0.1933 4H EXT 0.0420 LEBANON UR 4.9508 Total 23.4660	CODE 00938 Value \$12,363,996 LINN CNTY 4.0436 ESD LBL 0.3049 LBCC 0.6814 LEBANON SD 7.2476 SCIO RFD 1.9789 LINN S/WTR 0.0000 LEB AQUA CNTR 0.2400 4H EXT 0.0520 Total 14.5484	CODE 00944 Value \$15,596,439 LINN CNTY 4.0436 ESD LBL 0.3049 LBCC 0.6814 LEBANON SD 7.2476 SCIO RFD 1.9789 LINN S/WTR 0.0000 LEB AQUA CNTR 0.2400 4H EXT 0.0520 Total 14.5484	CODE 00950 Value \$5,526,907 LINN CNTY 4.0436 ESD LBL 0.3049 LBCC 0.6814 LEBANON SD 7.2476 LEBANON RFD 2.4735 N LEB WTR 0.1420 LEB AQUA CNTR 0.2400 4H EXT 0.0520 Total 12.5695	CODE 00955 Value \$22,000 LINN CNTY 3.8287 ESD LBL 0.2535 LBCC 0.5664 LEBANON SD 6.0243 LINN S/WTR 0.0000 LEB AQUA CNTR 0.1995 4H EXT 0.0433 LEBANON UR 3.2004 Total 14.1161	CODE 00962 Value \$2,379,706 LINN CNTY 4.0436 ESD LBL 0.3049 LBCC 0.6814 LEBANON SD 7.2476 TANGENT RFD 2.5739 LINN S/WTR 0.0000 LEB AQUA CNTR 0.2400 4H EXT 0.0520 Total 15.1434
CODE 00932 Value \$3,441,604 LINN CNTY 4.0436 ESD LBL 0.3049 LBCC 0.6814 LEBANON SD 7.2476 BRNSVL RFD 2.2287 LINN S/WTR 0.0000 LEB AQUA CNTR 0.2400 4H EXT 0.0520 Total 14.7982	CODE 00939 Value \$2,699,330 LINN CNTY 4.0436 ESD LBL 0.3049 LBCC 0.6814 LEBANON SD 7.2476 N LEB WTR 0.1420 LINN S/WTR 0.0000 LEB AQUA CNTR 0.2400 4H EXT 0.0520 Total 14.6904	CODE 00945 Value \$5,181,557 LINN CNTY 4.0436 ESD LBL 0.3049 LBCC 0.6814 LEBANON SD 7.2476 LEB AQUA CNTR 0.2400 4H EXT 0.0520 Total 12.5695	CODE 00951 Value \$10,980 LINN CNTY 4.0436 ESD LBL 0.3049 LBCC 0.6814 LEBANON SD 7.2476 LEBANON RFD 2.4735 N LEB WTR 0.1420 LEB AQUA CNTR 0.2400 4H EXT 0.0520 Total 15.1850	CODE 00956 Value \$2,000 LINN CNTY 3.7562 ESD LBL 0.2455 LBCC 0.5486 LEBANON SD 5.8337 LEBANON CTY 5.8663 LINN S/WTR 0.0000 LEB AQUA CNTR 0.1933 4H EXT 0.0420 LEBANON UR 4.5069 Total 20.9925	CODE 00963 Value \$8,620 LINN CNTY 4.0436 ESD LBL 0.3049 LBCC 0.6814 LEBANON SD 7.2476 N LEB WTR 0.1420 LINN S/WTR 0.0000 LEB AQUA CNTR 0.2400 4H EXT 0.0520 Total 12.7115
CODE 00933 Value \$24,926,981 LINN CNTY 4.0436 ESD LBL 0.3049 LBCC 0.6814 LEBANON SD 7.2476 LEBANON RFD 2.4735 LINN S/WTR 0.0000 LEB AQUA CNTR 0.2400 4H EXT 0.0520 Total 15.0430	CODE 00940 Value \$89,829,894 LINN CNTY 4.0436 ESD LBL 0.3049 LBCC 0.6814 LEBANON SD 7.2476 LEBANON RFD 2.4735 LEB AQUA CNTR 0.2400 4H EXT 0.0520 Total 15.0430	CODE 00946 Value \$20,686,242 LINN CNTY 4.0436 ESD LBL 0.3049 LBCC 0.6814 LEBANON SD 7.2476 LEBANON RFD 2.4735 LEB AQUA CNTR 0.2400 4H EXT 0.0520 Total 15.0430	CODE 00952 Value \$192,170 LINN CNTY 3.7562 ESD LBL 0.2455 LBCC 0.5486 LEBANON SD 5.8337 LEBANON CTY 5.8663 LEBANON RFD 2.0296 N LEB WTR 0.1420 LEB AQUA CNTR 0.1933 4H EXT 0.0420 LEBANON UR 4.9508 Total 23.6080	CODE 00957 WATERLOO Value \$8,107,518 LINN CNTY 4.0436 ESD LBL 0.3049 LBCC 0.6814 LEBANON SD 7.2476 WTRLOO CTY 0.0000 LEBANON RFD 2.4735 LINN S/WTR 0.0000 LEB AQUA CNTR 0.2400 4H EXT 0.0520 Total 15.0430	CODE 00964 Value \$917,821 LINN CNTY 4.0436 ESD LBL 0.3049 LBCC 0.6814 LEBANON SD 7.2476 LEBANON RFD 2.4735 LINN S/WTR 0.0000 LEB AQUA CNTR 0.2400 4H EXT 0.0520 Total 15.0430
CODE 00934 Value \$4,849,069 LINN CNTY 4.0436 ESD LBL 0.3049 LBCC 0.6814 LEBANON SD 7.2476 LEBANON RFD 2.4735 LINN S/WTR 0.0000 LEB AQUA CNTR 0.2400 4H EXT 0.0520 Total 15.0430	CODE 00941 Value \$3,680,454 LINN CNTY 4.0436 ESD LBL 0.3049 LBCC 0.6814 LEBANON SD 7.2476 LEBANON RFD 2.4735 N LEB WTR 0.1420 LEB AQUA CNTR 0.2400 4H EXT 0.0520 Total 15.1850	CODE 00947 Value \$105,080,375 LINN CNTY 3.7562 ESD LBL 0.2455 LBCC 0.5486 LEBANON SD 5.8337 LEBANON CTY 5.8663 LEBANON RFD 2.0296 LEB AQUA CNTR 0.1933 4H EXT 0.0420 LEBANON UR 4.9508 Total 23.4660	CODE 00953 Value \$1,243,841 LINN CNTY 3.8287 ESD LBL 0.2535 LBCC 0.5664 LEBANON SD 6.0243 LEBANON RFD 2.0920 LINN S/WTR 0.0000 LEB AQUA CNTR 0.1995 4H EXT 0.0433 LEBANON UR 3.5819 Total 16.5896	CODE 00958 Value \$80,390 LINN CNTY 3.7562 ESD LBL 0.2455 LBCC 0.5486 LEBANON SD 5.8337 LEBANON CTY 5.8663 LEBANON RFD 2.0296 LINN S/WTR 0.0000 LEB AQUA CNTR 0.1933 4H EXT 0.0420 LEBANON UR 4.9508 Total 23.4660	CODE 00965 Value \$3,153,710 LINN CNTY 4.0436 ESD LBL 0.3049 LBCC 0.6814 LEBANON SD 7.2476 ALBANY RFD 2.1500 LINN S/WTR 0.0000 LEB AQUA CNTR 0.2400 4H EXT 0.0520 Total 14.7195

Tax rates are shown in dollars per thousand of taxable value.
Rates are before Measure 5 compression.

LINN COUNTY TAX SUMMARY

2011-2012

CODE 00966 Value \$732,940 LINN CNTY 4.0436 ESD LBL 0.3049 LBCC 0.6814 LEBANON SD 7.2476 TANGENT RFD 2.5739 LINN S/WTR 0.0000 LEB AQUA CNTR 0.2400 4H EXT 0.0520 Total 15.1434	CODE 00971 Value \$581,840 LINN CNTY 3.9865 ESD LBL 0.3006 LBCC 0.6718 LEBANON SD 7.1450 LEBANON RFD 2.4385 LINN S/WTR 0.0000 LEB AQUA CNTR 0.2367 4H EXT 0.0513 LEBANON UR 0.2126 Total 15.0430	CODE 00977 Value \$7,879,901 LINN CNTY 3.7562 ESD LBL 0.2455 LBCC 0.5486 LEBANON SD 5.8337 LEBANON CTY 5.8663 LEBANON RFD 2.0296 LINN S/WTR 0.0000 LEB AQUA CNTR 0.1933 4H EXT 0.0420 LEBANON UR 4.9508 Total 23.4660	CODE 02703 Value \$39,820,110 LINN CNTY 4.0436 ESD WILL 0.2967 CHEM CC 0.8803 CHEM LIB 0.0818 N SANT SD 5.0758 LYONS RFD 1.6469 LINN S/WTR 0.0000 4H EXT 0.0520 Total 12.0771	CODE 02709 Value \$133,100 LINN CNTY 4.0436 ESD WILL 0.2967 CHEM CC 0.8803 CHEM LIB 0.0818 N SANT SD 5.0758 LYONS CTY 1.8926 LY/MEH WTR 1.0279 LINN S/WTR 0.0000 4H EXT 0.0520 Total 13.3507	CODE 02715 Value \$34,810 LINN CNTY 4.0436 ESD WILL 0.2967 LBCC 0.6814 N SANT SD 5.0758 SANT WTR 0.0000 LINN S/WTR 0.0000 4H EXT 0.0520 Total 10.1495
CODE 00967 Value \$461,790 LINN CNTY 4.0436 ESD LBL 0.3049 LBCC 0.6814 LEBANON SD 7.2476 TANGENT RFD 2.5739 LINN S/WTR 0.0000 LEB AQUA CNTR 0.2400 4H EXT 0.0520 Total 15.1434	CODE 00972 Value \$2,241,470 LINN CNTY 3.7562 ESD LBL 0.2455 LBCC 0.5486 LEBANON SD 5.8337 LEBANON CTY 5.8663 LEBANON RFD 2.0296 LINN S/WTR 0.0000 LEB AQUA CNTR 0.1933 4H EXT 0.0420 LEBANON UR 4.9508 Total 23.4660	CODE 00978 Value \$1,764,270 LINN CNTY 3.7562 ESD LBL 0.2455 LBCC 0.5486 LEBANON SD 5.8337 LEBANON CTY 5.8663 LEBANON RFD 2.0296 LINN S/WTR 0.0000 LEB AQUA CNTR 0.1933 4H EXT 0.0420 LEBANON UR 4.9508 Total 23.4660	CODE 02704 Value \$386,070 LINN CNTY 4.0436 ESD WILL 0.2967 CHEM CC 0.8803 CHEM LIB 0.0818 N SANT SD 5.0758 STAYTON RFD 1.5663 LINN S/WTR 0.0000 4H EXT 0.0520 Total 11.9965	CODE 02710 Value \$83,039,096 LINN CNTY 4.0436 ESD WILL 0.2967 LBCC 0.6814 N SANT SD 5.0758 STAYTON RFD 1.5663 LINN S/WTR 0.0000 4H EXT 0.0520 Total 11.7158	CODE 04001 Value \$10,175,260 LINN CNTY 4.0436 ESD LANE 0.2232 LANE CC 0.8782 EUGENE SD 7.5351 HARSBG RFD 1.1299 LINN S/WTR 0.0000 4H EXT 0.0520 Total 13.8620
CODE 00968 Value \$9,504,818 LINN CNTY 3.9865 ESD LBL 0.3006 LBCC 0.6718 LEBANON SD 7.1450 LEBANON RFD 2.4385 LINN S/WTR 0.0000 LEB AQUA CNTR 0.2367 4H EXT 0.0513 LEBANON UR 0.2126 Total 15.0430	CODE 00973 Value \$11,570,951 LINN CNTY 3.7562 ESD LBL 0.2455 LBCC 0.5486 LEBANON SD 5.8337 LEBANON CTY 5.8663 LEBANON RFD 2.0296 LINN S/WTR 0.0000 LEB AQUA CNTR 0.1933 4H EXT 0.0420 LEBANON UR 4.9508 Total 23.4660	CODE 00979 Value \$9,910,078 LINN CNTY 3.7562 ESD LBL 0.2455 LBCC 0.5486 LEBANON SD 5.8337 LEBANON CTY 5.8663 LEBANON RFD 2.0296 LINN S/WTR 0.0000 LEB AQUA CNTR 0.1933 4H EXT 0.0420 LEBANON UR 4.9508 Total 23.4660	CODE 02705 Value \$32,634,083 LINN CNTY 4.0436 ESD WILL 0.2967 CHEM CC 0.8803 CHEM LIB 0.0818 N SANT SD 5.0758 LYONS RFD 1.6469 LY/MEH WTR 1.0279 LINN S/WTR 0.0000 4H EXT 0.0520 Total 13.1050	CODE 02711 Value \$3,996,950 LINN CNTY 4.0436 ESD WILL 0.2967 LBCC 0.6814 N SANT SD 5.0758 SCIO RFD 1.9789 LINN S/WTR 0.0000 4H EXT 0.0520 Total 12.1284	CODE 05501 <i>SWEET HOME</i> Value \$365,995,278 LINN CNTY 4.0436 ESD LBL 0.3049 LBCC 0.6814 SW HM SD 6.6944 SW HM CTY 8.6357 SW HM FIRE/AM 1.8710 SW HM CEM 0.2166 LINN S/WTR 0.0000 4H EXT 0.0520 Total 22.4996
CODE 00969 Value \$7,302,120 LINN CNTY 3.7562 ESD LBL 0.2455 LBCC 0.5486 LEBANON SD 5.8337 LEBANON CTY 5.8663 LEBANON RFD 2.0296 LINN S/WTR 0.0000 LEB AQUA CNTR 0.1933 4H EXT 0.0420 LEBANON UR 4.9508 Total 23.4660	CODE 00974 Value \$1,281,953 LINN CNTY 4.0436 ESD LBL 0.3049 LBCC 0.6814 LEBANON SD 7.2476 SW HM FIRE/AM 1.8710 LINN S/WTR 0.0000 LEB AQUA CNTR 0.2400 4H EXT 0.0520 Total 14.4405	CODE 02701 <i>LYONS</i> Value \$70,777,926 LINN CNTY 4.0436 ESD WILL 0.2967 CHEM CC 0.8803 CHEM LIB 0.0818 N SANT SD 5.0758 LY/MEH WTR 1.0279 LINN S/WTR 0.0000 4H EXT 0.0520 Total 14.9976	CODE 02706 Value \$609,510 LINN CNTY 4.0436 ESD WILL 0.2967 CHEM CC 0.8803 CHEM LIB 0.0818 N SANT SD 5.0758 LY/MEH WTR 1.0279 LINN S/WTR 0.0000 4H EXT 0.0520 Total 11.4581	CODE 02712 Value \$95,790 LINN CNTY 4.0436 ESD WILL 0.2967 LBCC 0.6814 N SANT SD 5.0758 LINN S/WTR 0.0000 4H EXT 0.0520 Total 10.1495	CODE 05502 Value \$113,419,309 LINN CNTY 4.0436 ESD LBL 0.3049 LBCC 0.6814 SW HM SD 6.6944 SW HM FIRE/AM 1.8710 SW HM CEM 0.2166 LINN S/WTR 0.0000 4H EXT 0.0520 Total 13.8639
CODE 00970 Value \$629,741 LINN CNTY 3.9865 ESD LBL 0.3006 LBCC 0.6718 LEBANON SD 7.1450 LEBANON RFD 2.4385 LINN S/WTR 0.0000 LEB AQUA CNTR 0.2367 4H EXT 0.0513 LEBANON UR 0.2126 Total 15.0430	CODE 00975 Value \$1,131,736 LINN CNTY 4.0436 ESD LBL 0.3049 LBCC 0.6814 LEBANON SD 7.2476 SW HM FIRE/AM 1.8710 LINN S/WTR 0.0000 LEB AQUA CNTR 0.2400 4H EXT 0.0520 Total 14.4405	CODE 02702 Value \$6,362,681 LINN CNTY 4.0436 ESD WILL 0.2967 CHEM CC 0.8803 CHEM LIB 0.0818 N SANT SD 5.0758 LYONS CTY 1.8926 LYONS RFD 1.6469 LINN S/WTR 0.0000 4H EXT 0.0520 Total 10.4302	CODE 02707 Value \$95,070 LINN CNTY 4.0436 ESD WILL 0.2967 CHEM CC 0.8803 CHEM LIB 0.0818 N SANT SD 5.0758 LYONS CTY 1.8926 LYONS RFD 1.6469 LINN S/WTR 0.0000 4H EXT 0.0520 Total 13.9697	CODE 02713 Value \$731,700 LINN CNTY 4.0436 ESD WILL 0.2967 LBCC 0.6814 N SANT SD 5.0758 LYONS RFD 1.6469 LINN S/WTR 0.0000 4H EXT 0.0520 Total 11.7964	CODE 05503 Value \$10,381,379 LINN CNTY 4.0436 ESD LBL 0.3049 LBCC 0.6814 SW HM SD 6.6944 SW HM CEM 0.2166 LINN S/WTR 0.0000 4H EXT 0.0520 Total 11.9929
CODE 00971 Value \$581,840 LINN CNTY 3.9865 ESD LBL 0.3006 LBCC 0.6718 LEBANON SD 7.1450 LEBANON RFD 2.4385 LINN S/WTR 0.0000 LEB AQUA CNTR 0.2367 4H EXT 0.0513 LEBANON UR 0.2126 Total 15.0430	CODE 00976 Value \$1,131,736 LINN CNTY 4.0436 ESD LBL 0.3049 LBCC 0.6814 LEBANON SD 7.2476 SW HM FIRE/AM 1.8710 LINN S/WTR 0.0000 LEB AQUA CNTR 0.2400 4H EXT 0.0520 Total 14.4405	CODE 02703 Value \$39,820,110 LINN CNTY 4.0436 ESD WILL 0.2967 CHEM CC 0.8803 CHEM LIB 0.0818 N SANT SD 5.0758 LYONS CTY 1.8926 LYONS RFD 1.6469 LINN S/WTR 0.0000 4H EXT 0.0520 Total 12.3228	CODE 02708 Value \$39,460 LINN CNTY 4.0436 ESD WILL 0.2967 CHEM CC 0.8803 CHEM LIB 0.0818 N SANT SD 5.0758 LYONS CTY 1.8926 LINN S/WTR 0.0000 4H EXT 0.0520 Total 12.3228	CODE 02714 Value \$1,113,131 LINN CNTY 4.0436 ESD WILL 0.2967 LBCC 0.6814 N SANT SD 5.0758 STAYTON RFD 1.5663 SANT WTR 0.0000 LINN S/WTR 0.0000 4H EXT 0.0520 Total 11.7158	CODE 05504 Value \$17,467,380 LINN CNTY 4.0436 ESD LBL 0.3049 LBCC 0.6814 SW HM SD 6.6944 LINN S/WTR 0.0000 4H EXT 0.0520 Total 11.7763

Tax rates are shown in dollars per thousand of taxable value. Rates are before Measure 5 compression.

LINN COUNTY TAX SUMMARY

2011-2012

CODE 05506 Value \$97,204,178 LINN CNTY 4.0436 ESD LBL 0.3049 LBCC 0.6814 SW HM SD 6.6944 SW HM FIRE/AM 1.8710 LINN S/WTR 0.0000 4H EXT 0.0520 Total 13.6473	CODE 05521 Value \$155,000 LINN CNTY 4.0436 ESD LBL 0.3049 LBCC 0.6814 SW HM SD 6.6944 SW HM CTY 8.6357 SW HM CEM 0.2166 LINN S/WTR 0.0000 4H EXT 0.0520 Total 20.6286	CODE 05528 Value \$79,860 LINN CNTY 4.0436 ESD LBL 0.3049 LBCC 0.6814 SW HM SD 6.6944 SW HM AM 0.3500 MOHAWK RFD 1.9126 LINN S/WTR 0.0000 4H EXT 0.0520 Total 14.0389	CODE 09508 Value \$27,805,542 LINN CNTY 4.0436 ESD LBL 0.3049 LBCC 0.6814 SCIO SD 4.5080 SCIO SD BNDS 0.9097 SCIO RFD 1.9789 SANT WTR 0.0000 LINN S/WTR 0.0000 4H EXT 0.0520 Total 12.4785	CODE 09515 Value \$234,090 LINN CNTY 4.0436 ESD LBL 0.3049 LBCC 0.6814 SCIO SD 4.5080 SCIO SD BNDS 0.9097 LYONS RFD 1.6469 LINN S/WTR 0.0000 4H EXT 0.0520 Total 12.1465	CODE 12707 GATES Value \$3,260,633 LINN CNTY 4.0436 ESD LBL 0.3049 CHEM CC 0.8803 CHEM LIB 0.0818 SANT CAN SD 4.8880 GATES CTY 0.2824 GATES RFD 2.3000 LINN S/WTR 0.0000 4H EXT 0.0520 Total 12.8330
CODE 05511 Value \$5,455,833 LINN CNTY 4.0436 ESD LBL 0.3049 LBCC 0.6814 SW HM SD 6.6944 4H EXT 0.0520 Total 11.7763	CODE 05523 Value \$520,840 LINN CNTY 4.0436 ESD LBL 0.3049 LBCC 0.6814 SW HM SD 6.6944 SW HM AM 0.3500 SW HM CEM 0.2166 LINN S/WTR 0.0000 4H EXT 0.0520 Total 12.3429	CODE 07901 Value \$64,200 LINN CNTY 4.0436 ESD LANE 0.2232 LANE CC 0.8782 MARCOLA SD 4.6687 LINN S/WTR 0.0000 4H EXT 0.0520 Total 9.8657	CODE 09509 Value \$887,380 LINN CNTY 4.0436 ESD LBL 0.3049 LBCC 0.6814 SCIO SD 4.5080 SCIO SD BNDS 0.9097 STAYTON RFD 1.5663 SANT WTR 0.0000 LINN S/WTR 0.0000 4H EXT 0.0520 Total 12.0659	CODE 12701 MILL CITY Value \$62,617,021 LINN CNTY 4.0436 ESD LBL 0.3049 CHEM CC 0.8803 CHEM LIB 0.0818 SANT CAN SD 4.8880 MILL CTY 4.1578 MILL CTY RFD 1.8048 LINN S/WTR 0.0000 4H EXT 0.0520 Total 16.2132	CODE 12708 Value \$1,443,360 LINN CNTY 4.0436 ESD LBL 0.3049 CHEM CC 0.8803 CHEM LIB 0.0818 SANT CAN SD 4.8880 IDANHA RFD 1.6592 LINN S/WTR 0.0000 4H EXT 0.0520 Total 11.9098
CODE 05512 Value \$7,011,578 LINN CNTY 4.0436 ESD LBL 0.3049 LBCC 0.6814 SW HM SD 6.6944 SW HM CEM 0.2166 4H EXT 0.0520 Total 11.9929	CODE 05524 Value \$66,939,863 LINN CNTY 4.0436 ESD LBL 0.3049 LBCC 0.6814 SW HM SD 6.6944 SW HM AM 0.3500 LINN S/WTR 0.0000 4H EXT 0.0520 Total 12.1263	CODE 09502 Value \$156,703,018 LINN CNTY 4.0436 ESD LBL 0.3049 LBCC 0.6814 SCIO SD 4.5080 SCIO SD BNDS 0.9097 SCIO RFD 1.9789 LINN S/WTR 0.0000 4H EXT 0.0520 Total 12.4785	CODE 09510 SCIO Value \$39,149,807 LINN CNTY 4.0436 ESD LBL 0.3049 LBCC 0.6814 SCIO SD 4.5080 SCIO SD BNDS 0.9097 SCIO CTY 4.9057 SCIO RFD 1.9789 LINN S/WTR 0.0000 4H EXT 0.0520 Total 17.3842	CODE 12702 Value \$25,269,189 LINN CNTY 4.0436 ESD LBL 0.3049 CHEM CC 0.8803 CHEM LIB 0.0818 SANT CAN SD 4.8880 MILL CTY RFD 1.8048 LINN S/WTR 0.0000 4H EXT 0.0520 Total 12.0554	CODE 12709 IDANHA Value \$2,684,600 LINN CNTY 4.0436 ESD LBL 0.3049 CHEM CC 0.8803 CHEM LIB 0.0818 SANT CAN SD 4.8880 IDANHA CTY 2.5029 IDANHA RFD 1.6592 LINN S/WTR 0.0000 4H EXT 0.0520 Total 14.4127
CODE 05513 Value \$64,457,426 LINN CNTY 4.0436 ESD LBL 0.3049 LBCC 0.6814 SW HM SD 6.6944 SW HM FIRE/AM 1.8710 SW HM CEM 0.2166 4H EXT 0.0520 Total 13.8639	CODE 05525 Value \$3,481,436 LINN CNTY 4.0436 ESD LBL 0.3049 LBCC 0.6814 SW HM SD 6.6944 BRNSVL RFD 2.2287 SW HM AM 0.3500 LINN S/WTR 0.0000 4H EXT 0.0520 Total 14.3550	CODE 09503 Value \$9,236,628 LINN CNTY 4.0436 ESD LBL 0.3049 LBCC 0.6814 SCIO SD 4.5080 SCIO SD BNDS 0.9097 LINN S/WTR 0.0000 4H EXT 0.0520 Total 10.4996	CODE 09512 Value \$1,928,235 LINN CNTY 4.0436 ESD LBL 0.3049 LBCC 0.6814 SCIO SD 4.5080 LINN S/WTR 0.0000 4H EXT 0.0520 Total 9.5899	CODE 12703 Value \$29,558,531 LINN CNTY 4.0436 ESD LBL 0.3049 CHEM CC 0.8803 CHEM LIB 0.0818 SANT CAN SD 4.8880 LINN S/WTR 0.0000 4H EXT 0.0520 Total 10.2506	CODE 12710 Value \$410,120 LINN CNTY 4.0436 ESD LBL 0.3049 CHEM CC 0.8803 CHEM LIB 0.0818 SANT CAN SD 4.8880 IDANHA CTY 2.5029 LINN S/WTR 0.0000 4H EXT 0.0520 Total 12.7535
CODE 05515 Value \$15,253,233 LINN CNTY 4.0436 ESD LBL 0.3049 LBCC 0.6814 SW HM SD 6.6944 SW HM FIRE/AM 1.8710 4H EXT 0.0520 Total 13.6473	CODE 05526 Value \$3,965,830 LINN CNTY 4.0436 ESD LBL 0.3049 LBCC 0.6814 SW HM SD 6.6944 SW HM AM 0.3500 4H EXT 0.0520 Total 12.1263	CODE 09504 Value \$1,351,039 LINN CNTY 4.0436 ESD LBL 0.3049 LBCC 0.6814 SCIO SD 4.5080 SCIO SD BNDS 0.9097 SCIO RFD 1.9789 SANT WTR 1.0044 LINN S/WTR 0.0000 4H EXT 0.0520 Total 13.4829	CODE 09513 Value \$4,363,440 LINN CNTY 4.0436 ESD LBL 0.3049 LBCC 0.6814 SCIO SD 4.5080 SCIO RFD 1.9789 LINN S/WTR 0.0000 4H EXT 0.0520 Total 11.5688	CODE 12704 Value \$17,468,835 LINN CNTY 4.0436 ESD LBL 0.3049 CHEM CC 0.8803 CHEM LIB 0.0818 SANT CAN SD 4.8880 LYONS RFD 1.6469 LINN S/WTR 0.0000 4H EXT 0.0520 Total 11.8975	CODE 14012 Value \$358,860 LINN CNTY 4.0436 ESD WILL 0.2967 LBCC 0.6814 JEFFRSN SD 4.8468 SCIO RFD 1.9789 JEFFRSN PARK 0.2914 LINN S/WTR 0.0000 4H EXT 0.0520 Total 12.1908
CODE 05517 Value \$129,620 LINN CNTY 4.0436 ESD LBL 0.3049 LBCC 0.6814 SW HM SD 6.6944 LEBANON RFD 2.4735 LINN S/WTR 0.0000 4H EXT 0.0520 Total 14.2498	CODE 05527 Value \$580,040 LINN CNTY 4.0436 ESD LBL 0.3049 LBCC 0.6814 SW HM SD 6.6944 SW HM AM 0.3500 SW HM CEM 0.2166 4H EXT 0.0520 Total 12.3429	CODE 09507 Value \$953,220 LINN CNTY 4.0436 ESD LBL 0.3049 LBCC 0.6814 SCIO SD 4.5080 SCIO SD BNDS 0.9097 STAYTON RFD 1.5663 LINN S/WTR 0.0000 4H EXT 0.0520 Total 12.0659	CODE 09514 Value \$7,579,615 LINN CNTY 4.0436 ESD LBL 0.3049 LBCC 0.6814 SCIO SD 4.5080 LYONS RFD 1.6469 LINN S/WTR 0.0000 4H EXT 0.0520 Total 11.2368	CODE 12705 Value \$17,893,530 LINN CNTY 4.0436 ESD LBL 0.3049 CHEM CC 0.8803 CHEM LIB 0.0818 SANT CAN SD 4.8880 GATES RFD 2.3000 LINN S/WTR 0.0000 4H EXT 0.0520 Total 12.5506	

Tax rates are shown in dollars per thousand of taxable value. Rates are before Measure 5 compression.

LINN COUNTY TAX SUMMARY

2011-2012

CODE 14013 Value \$39,640 LINN CNTY 4.0436 ESD WILL 0.2967 LBCC 0.6814 JEFFRSN SD 4.8468 SCIO RFD 1.9789 JEFFRSN PARK 0.2914 S SANT WTR 1.0044 LINN SWTR 0.0000 4H EXT 0.0520 Total 13.1952	CODE 14019 Value \$10,875,903 LINN CNTY 4.0436 ESD WILL 0.2967 LBCC 0.6814 JEFFRSN SD 4.8468 JEFFRSN RF 1.1955 JEFFRSN PARK 0.2914 DEV/CON WTR 0.1614 LINN SWTR 0.0000 4H EXT 0.0520 Total 11.5688	CODE 50905 Value \$303,855 LINN CNTY 4.0436 ESD LBL 0.3049 LBCC 0.6814 CORVLS SD 5.9614 CORVLS SD BNDS 1.6843 HLY/SHD RFD 0.9894 LINN SWTR 0.0000 4H EXT 0.0520 Total 13.7170	CODE 55206 Value \$2,050,400 LINN CNTY 4.0436 ESD LBL 0.3049 LBCC 0.6814 C LINN SD 4.6179 HARSBG RFD 1.1299 LINN SWTR 0.0000 4H EXT 0.0520 Total 10.8297	CODE 55214 Value \$3,836,011 LINN CNTY 4.0436 ESD LBL 0.3049 LBCC 0.6814 C LINN SD 4.6179 HLY/SHD RFD 0.9894 OAKVL CNTR 0.0000 LINN SWTR 0.0000 4H EXT 0.0520 Total 10.6892
CODE 14014 Value \$132,390 LINN CNTY 4.0436 ESD WILL 0.2967 LBCC 0.6814 JEFFRSN SD 4.8468 JEFFRSN PARK 0.2914 LINN SWTR 0.0000 4H EXT 0.0520 Total 10.2119	CODE 14020 Value \$327,690 LINN CNTY 4.0436 ESD WILL 0.2967 LBCC 0.6814 JEFFRSN SD 4.8468 MILRSBG CTY 1.7000 JEFFRSN RF 1.1955 JEFFRSN PARK 0.2914 LINN SWTR 0.0000 4H EXT 0.0520 Total 13.1074	CODE 50906 Value \$13,499,260 LINN CNTY 4.0436 ESD LBL 0.3049 LBCC 0.6814 BENTON LIB 0.3947 CORVLS SD 5.9614 CORVLS SD BNDS 1.6843 LINN SWTR 0.0000 4H EXT 0.0520 Total 13.1223	CODE 55207 Value \$11,656,964 LINN CNTY 4.0436 ESD LBL 0.3049 LBCC 0.6814 C LINN SD 4.6179 LINN SWTR 0.0000 4H EXT 0.0520 Total 9.6998	CODE 55215 Value \$323,660 LINN CNTY 4.0436 ESD LBL 0.3049 LBCC 0.6814 C LINN SD 4.6179 OAKVL CNTR 0.0000 LINN SWTR 0.0000 4H EXT 0.0520 Total 9.6998
CODE 14015 Value \$3,477,710 LINN CNTY 4.0436 ESD WILL 0.2967 LBCC 0.6814 JEFFRSN SD 4.8468 SCIO RFD 1.9789 JEFFRSN PARK 0.2914 SANT WTR 0.0000 LINN SWTR 0.0000 4H EXT 0.0520 Total 12.1908	CODE 50901 Value \$104,670,530 LINN CNTY 4.0436 ESD LBL 0.3049 LBCC 0.6814 CORVLS SD 5.9614 CORVLS SD BNDS 1.6843 CORVLS RFD 2.1140 LINN SWTR 0.0000 4H EXT 0.0520 Total 14.8416	CODE 55202 Value \$1,371,580 LINN CNTY 4.0436 ESD LBL 0.3049 LBCC 0.6814 C LINN SD 4.6179 HALSEY CTY 6.7217 LINN SWTR 0.0000 4H EXT 0.0520 Total 16.4215	CODE 55208 Value \$372,510 LINN CNTY 4.0436 ESD LBL 0.3049 LBCC 0.6814 C LINN SD 4.6179 SW HM FIRE/AM 1.8710 LINN SWTR 0.0000 4H EXT 0.0520 Total 11.5708	CODE 55219 BROWNSVILLE Value \$82,661,228 LINN CNTY 4.0436 ESD LBL 0.3049 LBCC 0.6814 C LINN SD 4.6179 BRNSVL CTY 10.9693 BRNSVL RFD 2.2287 LINN SWTR 0.0000 4H EXT 0.0520 Total 22.8978
CODE 14016 Value \$7,219,007 LINN CNTY 4.0436 ESD WILL 0.2967 LBCC 0.6814 JEFFRSN SD 4.8468 JEFFRSN RF 1.1955 JEFFRSN PARK 0.2914 LINN SWTR 0.0000 4H EXT 0.0520 Total 11.4074	CODE 50902 Value \$389,210 LINN CNTY 4.0436 ESD LBL 0.3049 LBCC 0.6814 CORVLS SD 5.9614 CORVLS SD BNDS 1.6843 LINN SWTR 0.0000 4H EXT 0.0520 Total 12.7276	CODE 55203 Value \$113,424,134 LINN CNTY 4.0436 ESD LBL 0.3049 LBCC 0.6814 C LINN SD 4.6179 BRNSVL RFD 2.2287 LINN SWTR 0.0000 4H EXT 0.0520 Total 11.9285	CODE 55209 Value \$317,738 LINN CNTY 4.0436 ESD LBL 0.3049 LBCC 0.6814 C LINN SD 4.6179 LINN SWTR 0.0000 4H EXT 0.0520 Total 9.6998	CODE 55220 Value \$154,376,910 LINN CNTY 4.0436 ESD LBL 0.3049 LBCC 0.6814 C LINN SD 4.6179 HLY/SHD RFD 0.9894 LINN SWTR 0.0000 4H EXT 0.0520 Total 10.6892
CODE 14017 Value \$4,319,629 LINN CNTY 4.0436 ESD WILL 0.2967 LBCC 0.6814 JEFFRSN SD 4.8468 JEFFRSN RF 1.1955 JEFFRSN PARK 0.2914 SANT WTR 0.0000 LINN SWTR 0.0000 4H EXT 0.0520 Total 11.4074	CODE 50903 Value \$8,096,664 LINN CNTY 4.0436 ESD LBL 0.3049 LBCC 0.6814 CORVLS SD 5.9614 CORVLS SD BNDS 1.6843 ALBANY RFD 2.1500 LINN SWTR 0.0000 4H EXT 0.0520 Total 14.8776	CODE 55204 Value \$118,060,858 LINN CNTY 4.0436 ESD LBL 0.3049 LBCC 0.6814 C LINN SD 4.6179 HLY/SHD RFD 0.9894 LINN SWTR 0.0000 4H EXT 0.0520 Total 10.6892	CODE 55210 Value \$17,315,932 LINN CNTY 4.0436 ESD LBL 0.3049 LBCC 0.6814 C LINN SD 4.6179 HLY/SHD RFD 0.9894 LINN SWTR 0.0000 4H EXT 0.0520 Total 10.6892	CODE 55211 Value \$2,842,780 LINN CNTY 4.0436 ESD LBL 0.3049 LBCC 0.6814 C LINN SD 4.6179 HARSBG RFD 1.1299 LINN SWTR 0.0000 4H EXT 0.0520 Total 10.8297
CODE 14018 Value \$2,533,510 LINN CNTY 4.0436 ESD WILL 0.2967 LBCC 0.6814 JEFFRSN SD 4.8468 JEFFRSN RF 1.1955 JEFFRSN PARK 0.2914 S SANT WTR 1.0044 LINN SWTR 0.0000 4H EXT 0.0520 Total 12.4118	CODE 50904 Value \$571,950 LINN CNTY 4.0436 ESD LBL 0.3049 LBCC 0.6814 CORVLS SD 5.9614 CORVLS SD BNDS 1.6843 TANGENT RFD 2.5739 LINN SWTR 0.0000 4H EXT 0.0520 Total 15.3015	CODE 55205 Value \$5,972,880 LINN CNTY 4.0436 ESD LBL 0.3049 LBCC 0.6814 C LINN SD 4.6179 TANGENT RFD 2.5739 LINN SWTR 0.0000 4H EXT 0.0520 Total 12.2737	CODE 55212 HALSEY Value \$46,479,075 LINN CNTY 4.0436 ESD LBL 0.3049 LBCC 0.6814 C LINN SD 4.6179 HALSEY CTY 6.7217 HLY/SHD RFD 0.9894 LINN SWTR 0.0000 4H EXT 0.0520 Total 17.4109	

Tax rates are shown in dollars per thousand of taxable value. Rates are before Measure 5

~ District Abbreviations ~

4H EXT	4H Extension Dist	HARSBG SD	Harrisburg School	MILRSBG CTY	Millersburg City
ALBANY CTY	Albany City	HARSBG UR	Harrisburg Redevelop	MOHAWK RFD	Mohawk Valley Rurl Fire
ALBANY RFD	Albany Rural Fire	HLY/SHD RFD	Halsey/Shed Rural Fire	MONROE RFD	Monroe Rural Fire
ALBANY SD	Albany School	IDANHA CTY	Idanha City	MONROE SD	Monroe School
ALBANY UR	Central Albany Revit	IDANHA RFD	Idanha Rural Fire	N LEB WTR	North Lebanon Water
BENTON LIB	Benton Co Library	JEFFRSN PARK	Jefferson Park Rec	N SANT SD	North Santiam School
BRNSVL CTY	Brownsville City	JEFFRSN RFD	Jefferson Rural Fire	OAKVL CNTR	Oak Creek Comm Cntr
BRNSVL RFD	Brownsville Rural Fire	JEFFRSN SD	Jefferson School	S SANT WTR	South Santiam Water
C LINN SD	Central Linn School	LANE CC	Lane CC	SANT CAN SD	Santiam Canyon School
CHEM CC	Chemeketa CC	LBCC	Linn Benton CC	SANT WTR	Santiam Water
CHEM LIB	Chemeketa Library	LEB AQUA CNTR	Lebanon Aquatic Center	SCIO CTY	Scio City
CORVLS RFD	Corvallis Rural Fire	LEBANON UR	Lebanon Urban Renewal	SCIO RFD	Scio Rural Fire
CORVLS SD	Corvallis School	LEBANON CTY	Lebanon City	SCIO SD	Scio School
DEV/CON WTR	Dever Conner Water	LEBANON RFD	Lebanon Rural Fire	SODAVLE CTY	Sodaville City
ESD LANE	Lane ESD	LEBANON SD	Lebanon School	STAYTON RFD	Stayton Rural Fire
ESD LBL	LinnBtnLinc ESD	LINN CNTY	Linn County	SW HM AM	Sweet Home Ambulance
ESD WILL	Willamette Regional ESD	LINN S/WTR	Linn Soil & Water Consvr	SW HM CEM	Sweet Home Cemetary
EUGENE SD	Eugene School	LY/MEH WTR	Lyons/Mehama Water	SW HM CTY	Sweet Home City
GATES CTY	Gates City	LYONS CTY	Lyons City	SW HM FIRE/AM	Sweet Home Fire & Ambul
GATES RFD	Gates Rural Fire	LYONS RFD	Lyons Rural Fire	SW HM SD	Sweet Home School
HALSEY CTY	Halsey City	MARCOLA SD	Marcola School	TANGENT CTY	Tangent City
HARSBG CTY	Harrisburg City	MILL CTY	Mill City	TANGENT RFD	Tangent Rural Fire Dist.
HARSBG RFD	Harrisburg Rural Fire	MILL CTY RFD	Mill City Rural Fire	WTRLOO CTY	Waterloo City

This summary is designed to provide information about the current Assessment and Tax Roll. More detailed or specific information is available from our office, located in room 214 of the County Courthouse at 300 4th Ave SW in Albany.

If you have questions concerning property you own or more general questions about the property tax system, you are welcome to discuss your situation with a member of our staff. If you are eligible for a program to help reduce your property taxes, we will gladly help in any way we can.

Ad valorem taxes are based on the assessed value of your property as of January 1st. Those taxes provide funds for the operation of schools, cities, fire districts, and other miscellaneous taxing districts.

The Assessor does not tax, but values your property through methods prescribed by state law and regulation. The Assessor does not determine the amount of money your taxing district receives. To control spending, you should take an active interest in local budget meetings and elections. You are, in effect, purchasing services with your tax dollars.

Taxes are due and payable in three installments. The first third is due on November 15th, the second third on February 15th, and the final third on May 15th. A three percent discount will be allowed on taxes paid in full on or before November 15th. A two percent discount will be allowed if two-thirds of the total taxes are paid on or before November 15th. No discount will be allowed on taxes paid after November 15th. Interest at a rate of 1-1/3% per month or fraction of a month will be charged on any payment made after the installment due date.

By law this office must credit your property tax payments to the earliest year for which taxes are due on your property. In order to receive a discount on your current year's bill, all prior year's taxes, penalties and interest must first be fully paid.

I, Mark Noakes, Linn County Assessor/Tax Collector, State of Oregon, do hereby certify that the assessed valuations, tax levies and taxes set forth herein contained, are true and correct copies of the originals, as the same appears on file in my office and custody.

Mark Noakes
Linn County Assessor / Tax Collector

Mailing Address:
Linn County Assessment and Taxation
PO Box 100
Albany OR 97321

Location:
Linn County Courthouse, Room 214

Phone: **(541) 967-3808**

Web Site:
www.co.linn.or.us